

CITY OF BLAINE, MINNESOTA **COMPREHENSIVE PLAN**

- ① Natural Resources
- ② Housing
- ③ Economic Development
- ④ Land Use
- ⑤ Parks, Trails & Recreation
- ⑥ Transportation



COMPREHENSIVE PLAN Process Update

1

May 3, 2018
City Council
Meeting

2

6 month adjacent
community review (April
through September)

3

Submit to Met Council
(December 31, 2018
deadline)

4

60 days to review and
formal comment letter
(can be extended by
Met Council)



WHERE BLAINE IS NOW

WHERE BLAINE IS GOING

FORECAST YEAR	POPULATION	HOUSEHOLDS	EMPLOYMENT
2010	57,186	21,077	20,561
2020	66,300	25,100	25,800
2030	76,700	29,200	28,400
2040	87,300	33,300	31,000
2010-2040 Change	+30,114	+12,223	+10,439



NATURAL RESOURCES & SUSTAINABILITY

PRESENT: _____

- Natural Resources Conversation Board
- Open Space Management Plan
- Blaine Wetland Sanctuary

WHAT WE HEARD: _____

- Natural resources = high priority
- Water resources = high priority
- Renewable energy
- Sustainability

WHAT ARE THE UPDATES: _____

- Natural Resources Plan
- Leverage construction
- Alternate forms of energy
- Co2 emissions





WHAT ABOUT HOUSING?

PRESENT:

- Aging population
- Household size decreasing
- 74% affordable
- 16% cost-burdened

WHAT WE HEARD:

- Cross-generational and income housing opportunities
- Preserve manufactured home communities
- Improve housing stock
- Multi-family with access to affordable housing and transit

WHAT ARE THE UPDATES:

- Utilize local funding, partnerships, regional and federal assets

	UNITS	PERCENT
Single-Family Detached	14,471	64.0%
Townhomes (single-family attached)	4,523	20.0%
Manufactured home	1,722	7.6%
Duplex and triplex and quad	340	1.5%
Multifamily (5 units or more)	1567	6.9%
	22,623	100%





ECONOMIC DEVELOPMENT

PRESENT: _____

- 24,000 jobs in 2016
- Average wage = \$43,205
- Gain approximately 7,000 jobs by 2040

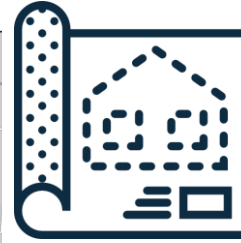
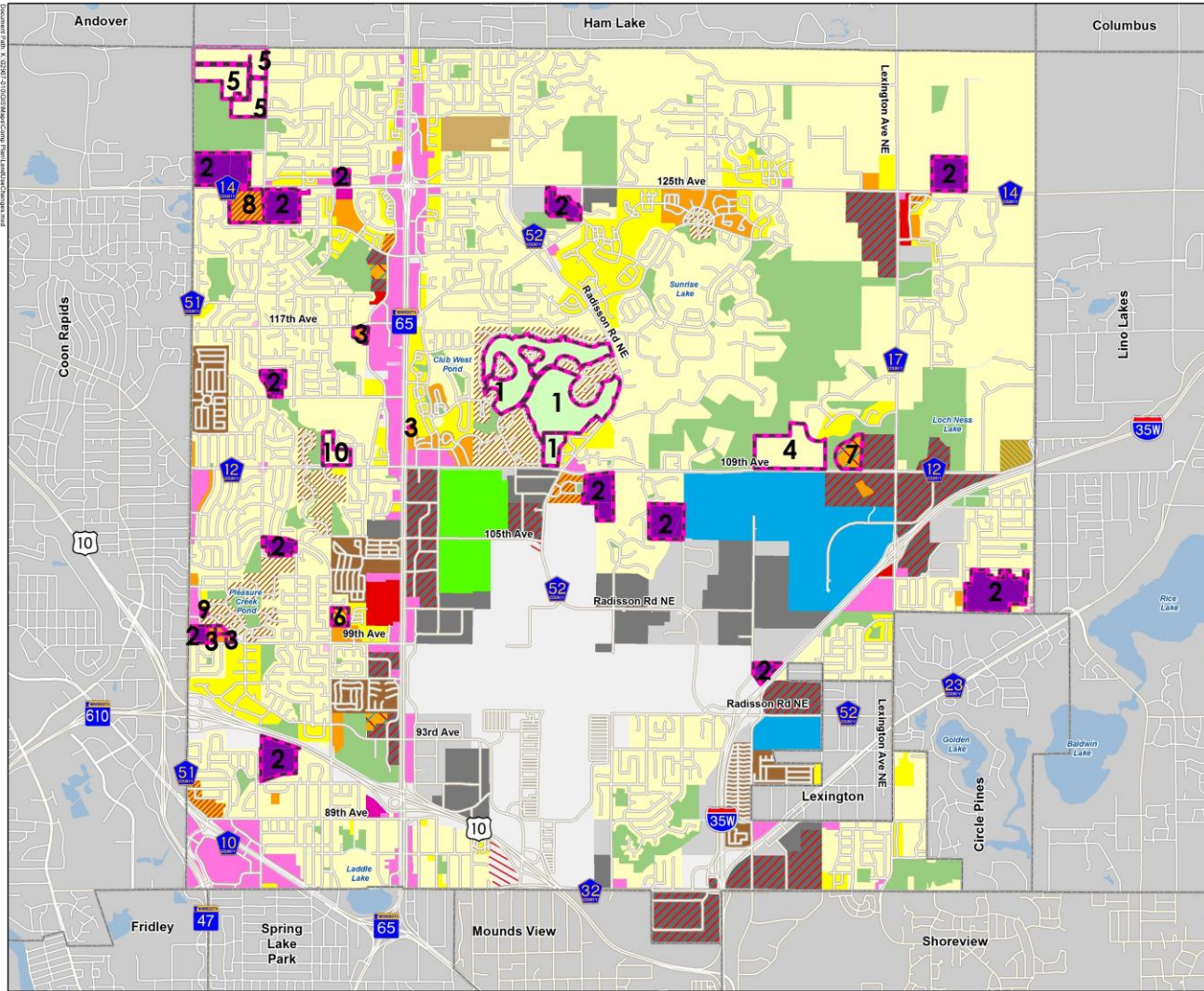
WHAT WE HEARD: _____

- Encourage development
- Redevelop obsolete or blighted areas
- Support Northtown commercial area

WHAT ARE THE UPDATES: _____

- Redevelopment areas, zoning and land use changes
- Support job growth, access and land expansion
- Promote Blaine to business community
- Utilize strategic partnerships





LAND USE

WHAT WE HEARD:

- Connect NW 160 acres to municipal sewer and water
- Maintain flexibility in land use districts
- Increase residential density
- Preserve manufactured housing as affordable
- Re-develop underutilized areas



Transportation

PRESENT:

- Motorized
- Non-motorized
- Freight
- Transit
- Aviation

WHAT WE HEARD:

- Aging populations require more options
- Upgrade regional roadways
- Develop effective mass transit

WHAT ARE THE UPDATES:

- TH 65 intersection – enhance pedestrian connection/safety
- Update Met Council map with existing and future roadways
- Support for 35W Corridor
- Support Central Avenue BRT Service



SURFACE WATER MANAGEMENT PLAN

WHAT IT IS:

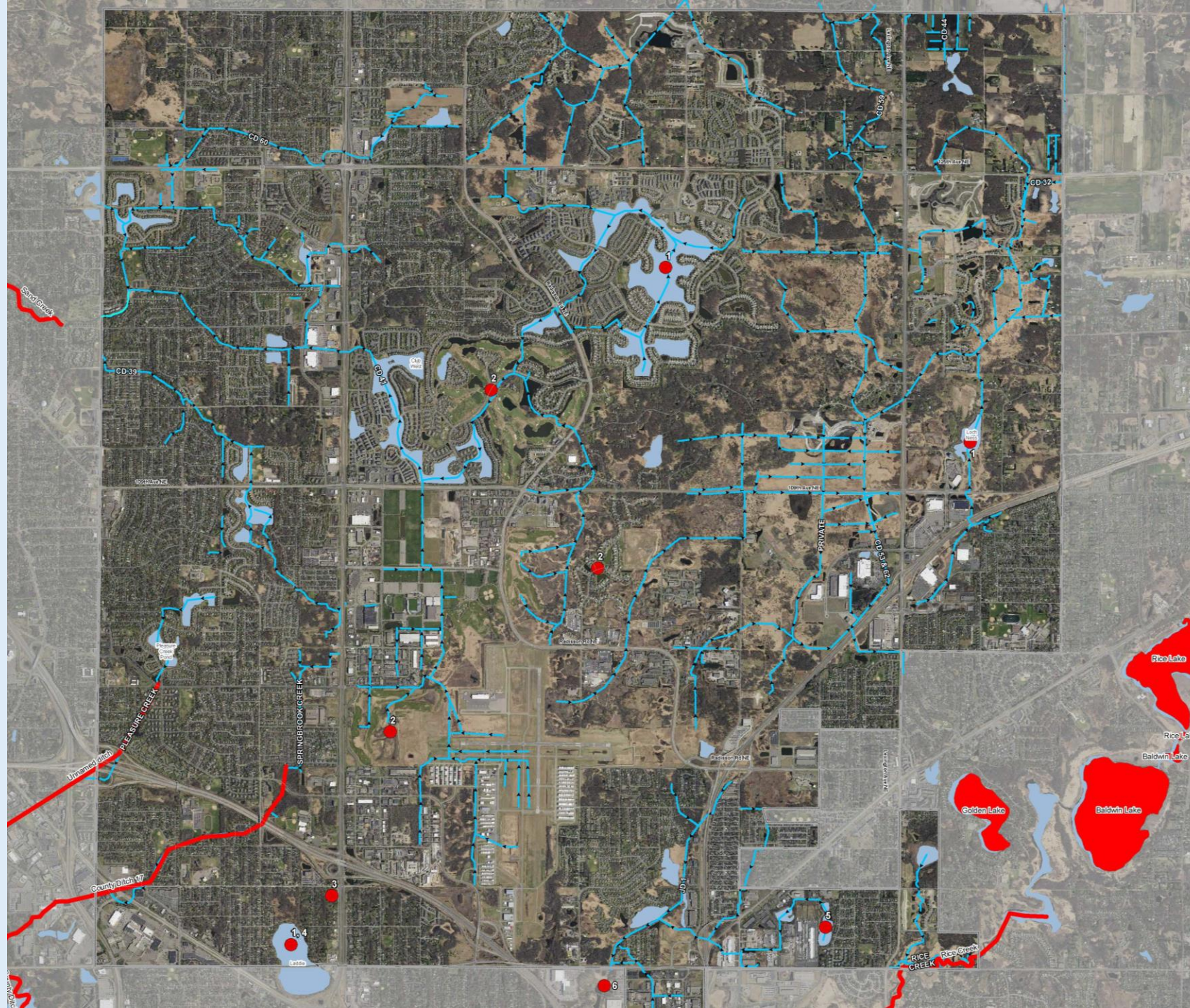
- How the community protects local water resources
- Planning tool to assist with budgeting
- Regulatory document describing policies

GOALS:

- Protect water quality
- Prevent flooding and discharge rates
- Maintain infrastructure
- Education and public participation
- Protect fish and wildlife habitats and recreation

ISSUES IDENTIFIED:

- Poor water quality
- Backyard / street flooding
- Soil erosion areas
- Education program



COMPREHENSIVE PLAN NEXT STEPS

1

City Council
Consideration
November 15, 2018

2

Formal submittal to Met
Council – December 1,
2018

3

Zoning Updates and
Capital Improvement
Programming - 2019

