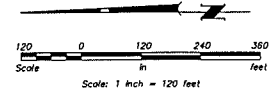
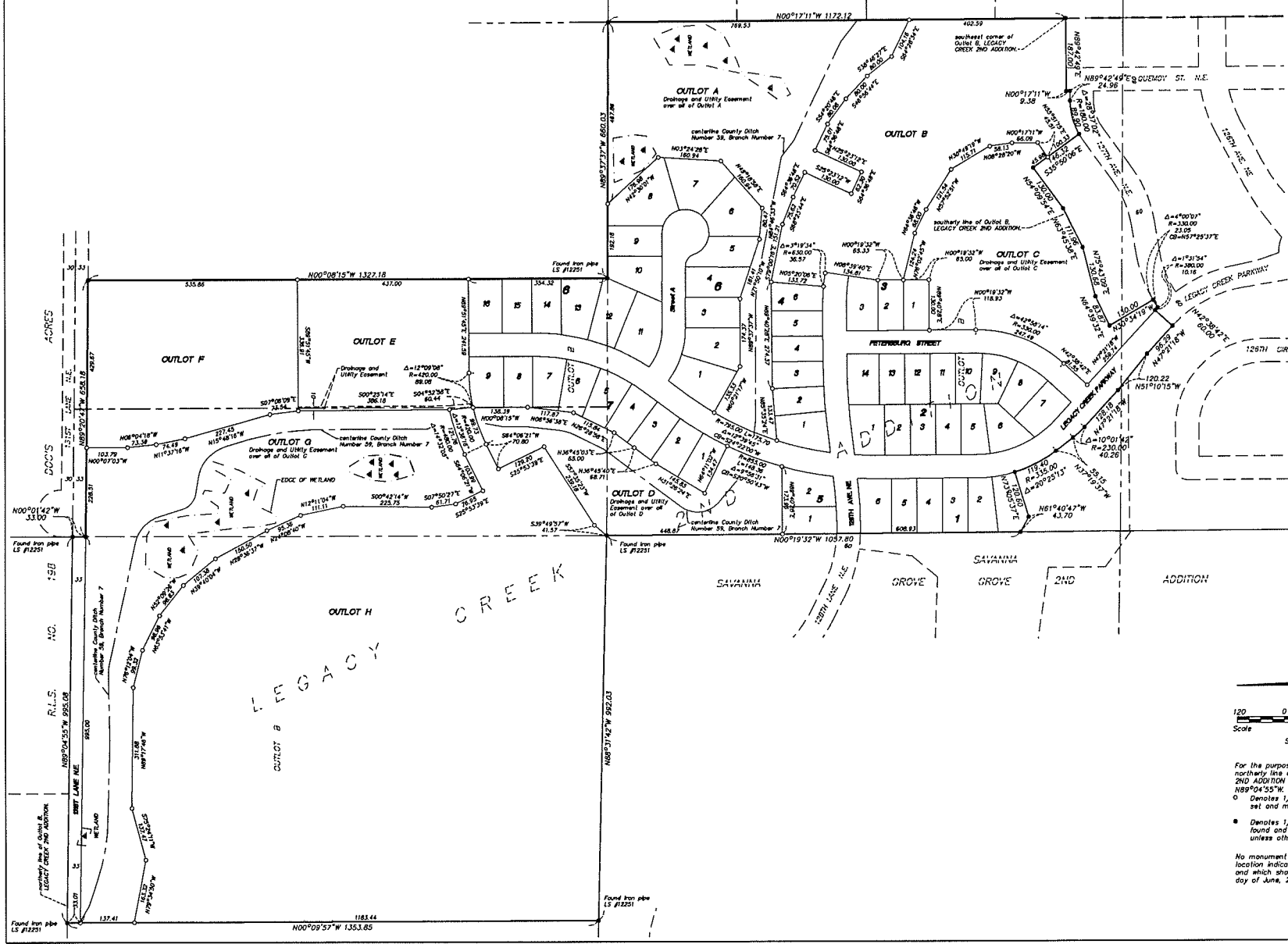


PRESERVE AT LEGACY CREEK



For the purposes of this plat, the most northerly line of Outlot B, LEGACY CREEK 2ND ADDITION is assumed to bear N89°04'55"W.

- Denotes 1/2 inch by 14 inch iron monument set and marked by License No. 23021
- Denotes 1/2 inch by 14 inch iron monument found and marked by License No. 43999, unless otherwise shown.

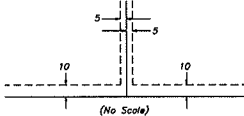
No monument symbol shown at any statute required location indicates a plat monument that will be set, and which shall be in place on or before the 1st day of June, 2014.

Westwood
Professional Services, Inc.

PRESERVE AT LEGACY CREEK



Drainage and Utility Easements are shown thus:



(No Scale)
Being 5 feet in width, unless otherwise indicated, and adjoining lot lines, and 10 feet in width and adjoining right-of-way lines as shown on the plat.

For the purposes of this plat, the most northerly line of Outlot B, LEGACY CREEK 2ND ADDITION is assumed to bear N89°04'53"W.
 ○ Denotes 1/2 inch by 14 inch iron monument set and marked by License No. 23021
 ● Denotes 1/2 inch by 14 inch iron monument found and marked by License No. 43959, unless otherwise noted.

No monument symbol shown of any statute required location indicates a plat monument that will be set, and which shall be in place on or before the 1st day of June, 2014.

Westwood
Professional Services, Inc.