

Case File No. 13-0023



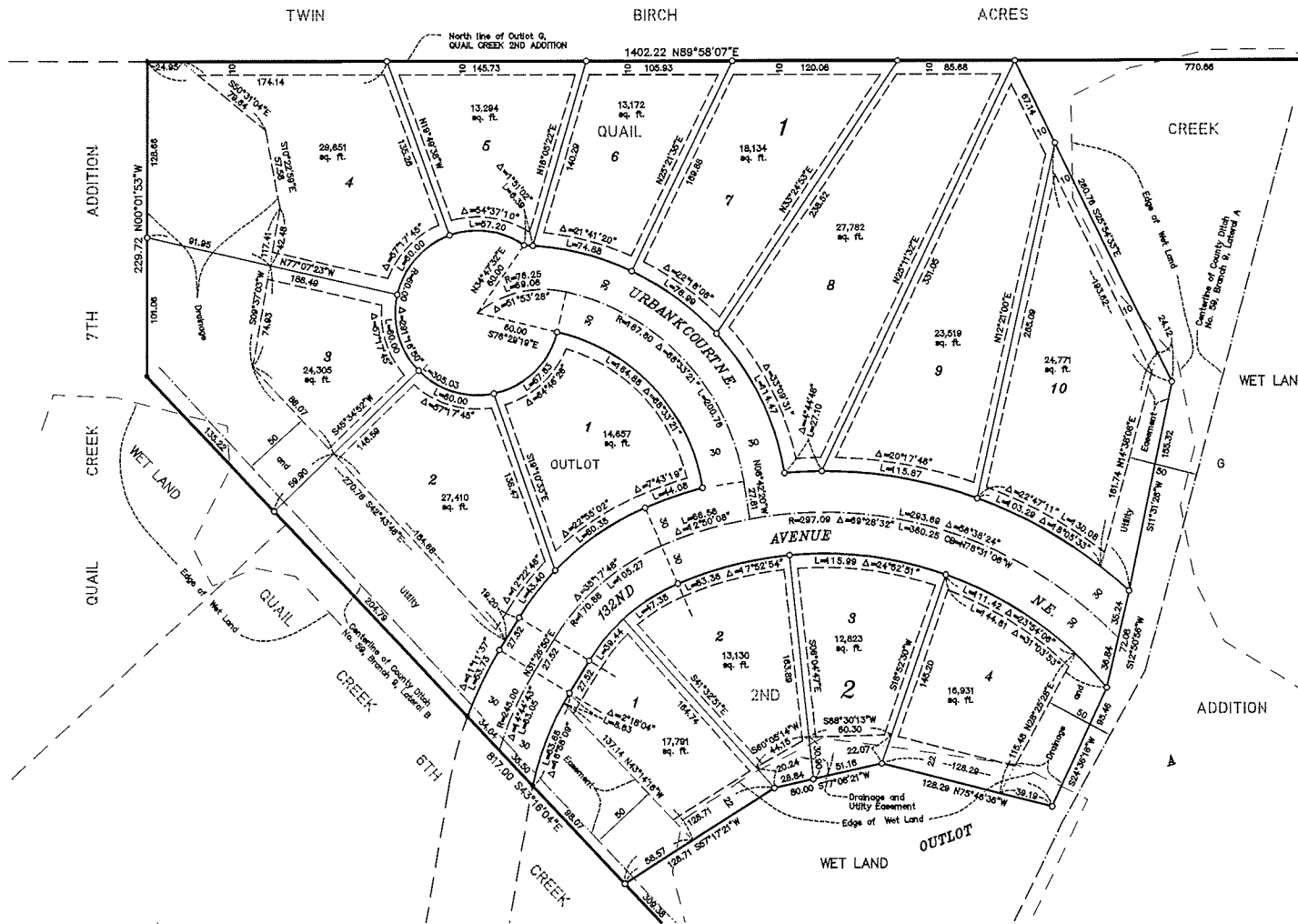
Blaine Planning Department / 10801 Town Square Dr NE / Blaine, MN 55449 / (763) 785-6180



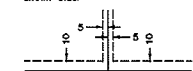
QUAIL CREEK 9TH ADDITION

Lot Area Plat

City of Blaine
County of Anoka
Sec. 4, T. 31, R. 23



Drainage and Utility Easements are shown thus:

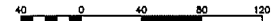
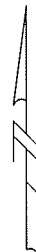


Being 5 feet in width and adjoining lot lines, and 10 feet in width and adjoining street lines unless otherwise shown on the plat.

○ Denotes 1/2 inch by 14 inch iron pipe monument set and marked by License No. 14376

● Denotes 1/2 inch iron pipe monument found.

For the purpose of this plat, the North line of Outlet G, QUAIL CREEK 2ND ADDITION is assumed to bear N 89°58'07\"/>



Scale 1 inch = 40 feet

HEDLUND
PLANNING ENGINEERING SURVEYING