



**Case File No. 13-0055**



Blaine Planning Department / 10801 Town Square Dr NE / Blaine, MN 55449 / (763) 785-6180



# WHITE PINES SENIOR LIVING AT THE LAKES OF RADISSON SECOND ADDITION

City of Blaine  
County of Anoka  
Section 10, T31, R23

ANOKA COUNTY HIGHWAY RIGHT-OF-WAY PLAT NO. 46

(C.S.A.H. NO. 14) MAIN STREET

NORTHEAST CORNER OF SECTION 10,  
TOWNSHIP 31, RANGE 23  
1322.27  
58°10'45"E  
NORTH LINE OF THE NORTHEAST  
QUARTER OF SECTION 10, TOWNSHIP  
31, RANGE 23

KNOW ALL PERSONS BY THESE PRESENTS: That Hans Hagen Homes, Inc., a Minnesota corporation, owner of the following described property:

Outlot A, WHITE PINES SENIOR LIVING AT THE LAKES OF RADISSON, Anoka County, Minnesota.

Has caused the same to be surveyed and platted as WHITE PINES SENIOR LIVING AT THE LAKES OF RADISSON SECOND ADDITION and does hereby dedicate to the public for public use the drainage and utility easements as shown on this plat.

In witness whereof said Hans Hagen Homes, Inc., a Minnesota corporation, has caused these presents to be signed by its proper officer this \_\_\_\_\_ day of \_\_\_\_\_, 20\_\_\_\_.

HANS HAGEN HOMES, INC.

\_\_\_\_\_, as Vice President  
John P. Roak

STATE OF MINNESOTA  
COUNTY OF \_\_\_\_\_  
This instrument was acknowledged before me this \_\_\_\_\_ day of \_\_\_\_\_, 20\_\_\_\_ by John P. Roak, as Vice President, of Hans Hagen Homes, Inc., a Minnesota corporation, on behalf of the corporation.

Notary Public, \_\_\_\_\_ County, Minnesota  
My Commission Expires \_\_\_\_\_

I, Daniel W. Obermiller, do hereby certify that this plat was prepared by me or under my direct supervision; that I am a duly Licensed Land Surveyor in the State of Minnesota; that this plat is a correct representation of the boundary survey; that all mathematical data and labels are correctly designated on this plat; that all monuments depicted on this plat have been, or will be correctly set within one year; that all water boundaries and wet lands, as defined in Minnesota Statutes, Section 505.01, Subd. 3, as of the date of this certificate are shown and labeled on this plat; and all public ways are shown and labeled on this plat.

Dated this \_\_\_\_\_ day of \_\_\_\_\_, 20\_\_\_\_.

Daniel W. Obermiller, Licensed Land Surveyor  
Minnesota License No. 25341

STATE OF MINNESOTA  
COUNTY OF \_\_\_\_\_  
This instrument was acknowledged before me this \_\_\_\_\_ day of \_\_\_\_\_, 20\_\_\_\_ by Daniel W. Obermiller.

Notary Public, \_\_\_\_\_ County, Minnesota  
My Commission Expires \_\_\_\_\_

City Council, City of Blaine, Minnesota

This plat of WHITE PINES SENIOR LIVING AT THE LAKES OF RADISSON SECOND ADDITION was approved and accepted by the City Council of the City of Blaine, Minnesota at a regular meeting thereof held this \_\_\_\_\_ day of \_\_\_\_\_, 20\_\_\_\_ and said plat is in compliance with the provisions of Minnesota Statutes, Section 505.03, Subd. 2.

City Council, City of Blaine, Minnesota

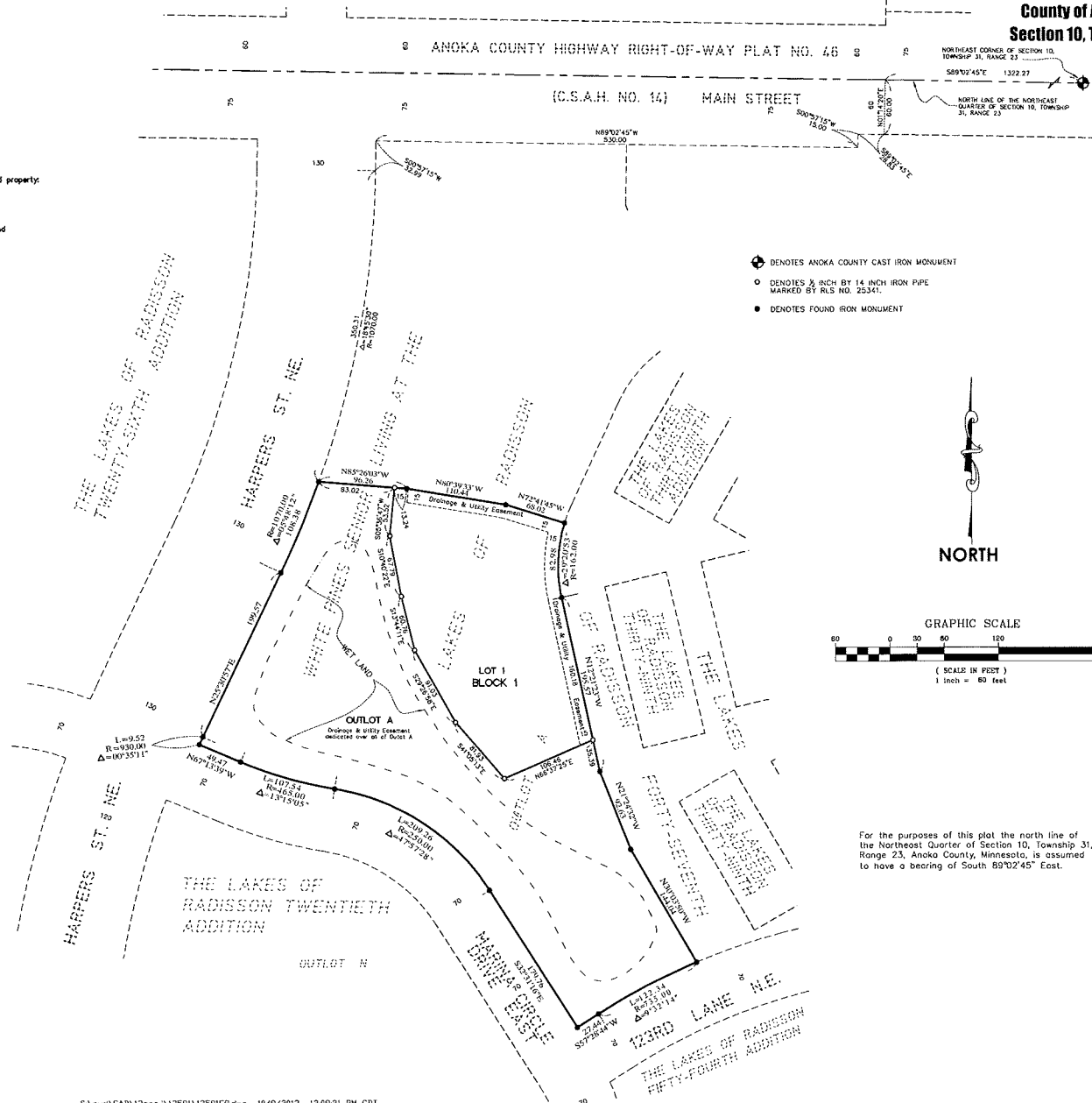
By \_\_\_\_\_ Mayor

By \_\_\_\_\_ Clerk

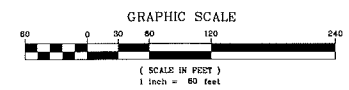
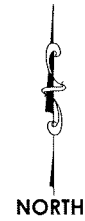
County Surveyor

I hereby certify that in accordance with Minnesota Statutes, Section 505.021, Subd. 11, this plat has been reviewed and approved this \_\_\_\_\_ day of \_\_\_\_\_, 20\_\_\_\_.

Larry D. Holm  
Anoka County Surveyor



- ⊕ DENOTES ANOKA COUNTY CAST IRON MONUMENT
- DENOTES 3/8 INCH BY 14 INCH IRON PIPE MARKED BY RLS NO. 25341.
- DENOTES FOUND IRON MONUMENT



For the purposes of this plat the north line of the Northeast Quarter of Section 10, Township 31, Range 23, Anoka County, Minnesota, is assumed to have a bearing of South 88°10'45\"/>

