

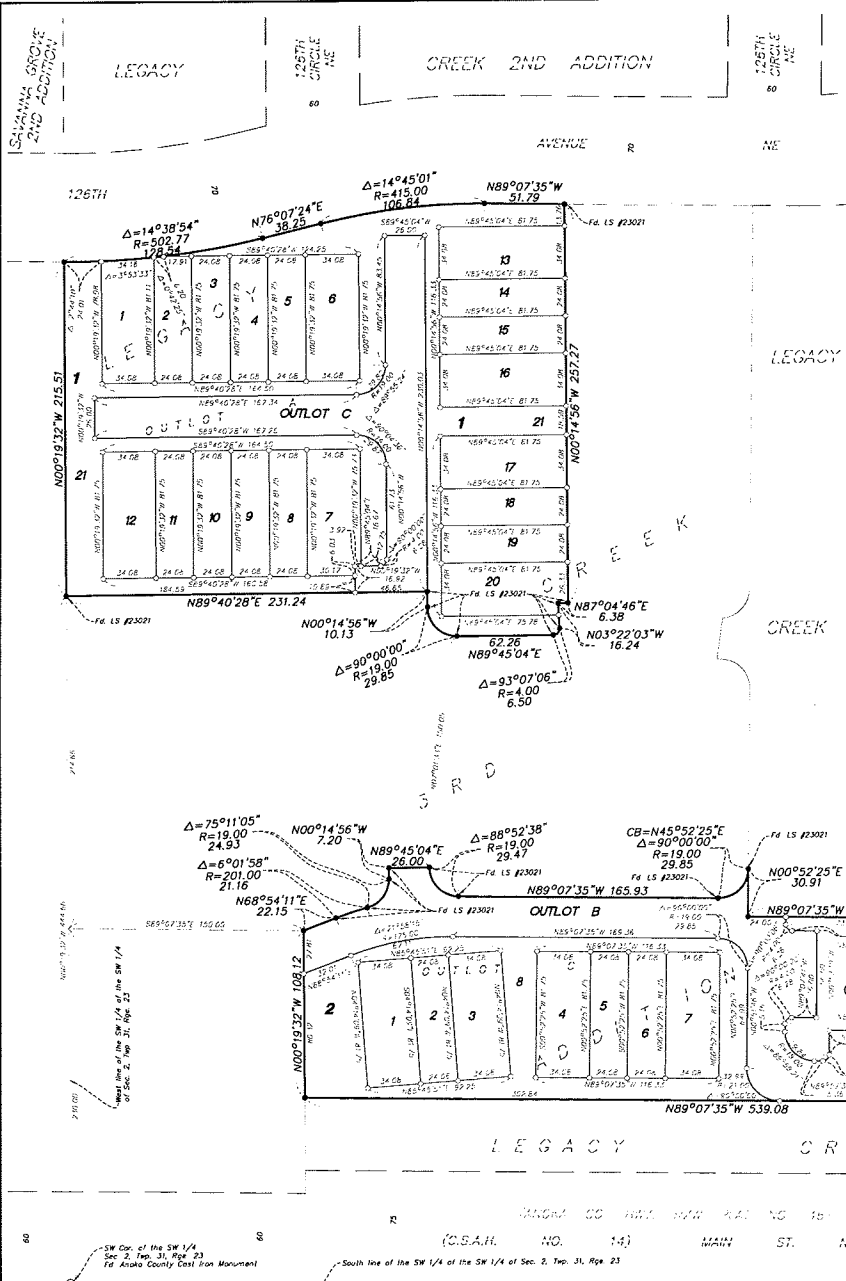
Case File No. 14-0012

Blaine Planning Department / 10801 Town Square Dr NE / Blaine, MN 55449 / (763) 785-6180



LEGACY CREEK 4TH ADDITION

CITY OF BLAINE
COUNTY OF ANOKA
SEC. 2, T. 31, R. 23



KNOW ALL PERSONS BY THESE PRESENTS: That SCC Funding I, LLC, a Minnesota limited liability company, owner of the following described property:

Outlot A and Outlot C, LEGACY CREEK 3RD ADDITION, according to the recorded plat thereof, Anoka County, Minnesota

Has caused the same to be surveyed and platted as LEGACY CREEK 4TH ADDITION and does hereby dedicate to the public for public use the drainage and utility easements as created by this plat.

In witness whereof said SCC Funding I, LLC, a Minnesota limited liability company, has caused these presents to be signed by its proper officer this ____ day of ____ 20____

SCC FUNDING I, LLC

STATE OF MINNESOTA
COUNTY OF _____

This instrument was acknowledged before me this ____ day of ____ 20____ by _____, its _____ of SCC Funding I, LLC, a Minnesota limited liability company.

Notary Public, _____ County, Minnesota
My Commission Expires _____

I, Craig W. Morse do hereby certify that this plat was prepared by me or under my direct supervision; that I am a duly Licensed Land Surveyor in the State of Minnesota; that this plat is a correct representation of the boundary survey; that all mathematical data and labels are correctly designated on this plat; that all monuments depicted on this plat have been, or will be correctly set within one year; that all water boundaries and wet lands, as defined in Minnesota Statutes, Section 505.01, Subd. 3, as of the date of this certificate are shown and labeled on this plat; and all public ways are shown and labeled on this plat.

Dated this ____ day of ____ 20____

Craig W. Morse, Licensed Land Surveyor
Minnesota License No. 23021

STATE OF MINNESOTA
COUNTY OF HENNEPIN

This instrument was acknowledged before me on _____ by Craig W. Morse

Notary Public, _____ County, Minnesota
My Commission Expires _____

CITY COUNCIL, CITY OF BLAINE, MINNESOTA

This plat of LEGACY CREEK 4TH ADDITION was approved and accepted by the City Council of the City of Blaine, Minnesota at a regular meeting thereof held this ____ day of ____ 20____, and said plat is in compliance with the provisions of Minnesota Statutes, Section 505.01, Subd. 2.

City Council, City of Blaine, Minnesota

By: _____ Mayor By: _____ Clerk

COUNTY SURVEYOR

I hereby certify that in accordance with Minnesota Statutes, Section 505.021, Subd. 11, this plat has been reviewed and approved this ____ day of ____ 20____

Larry D. Holm, Anoka County Surveyor

Westwood
Professional Services, Inc.