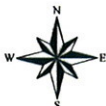
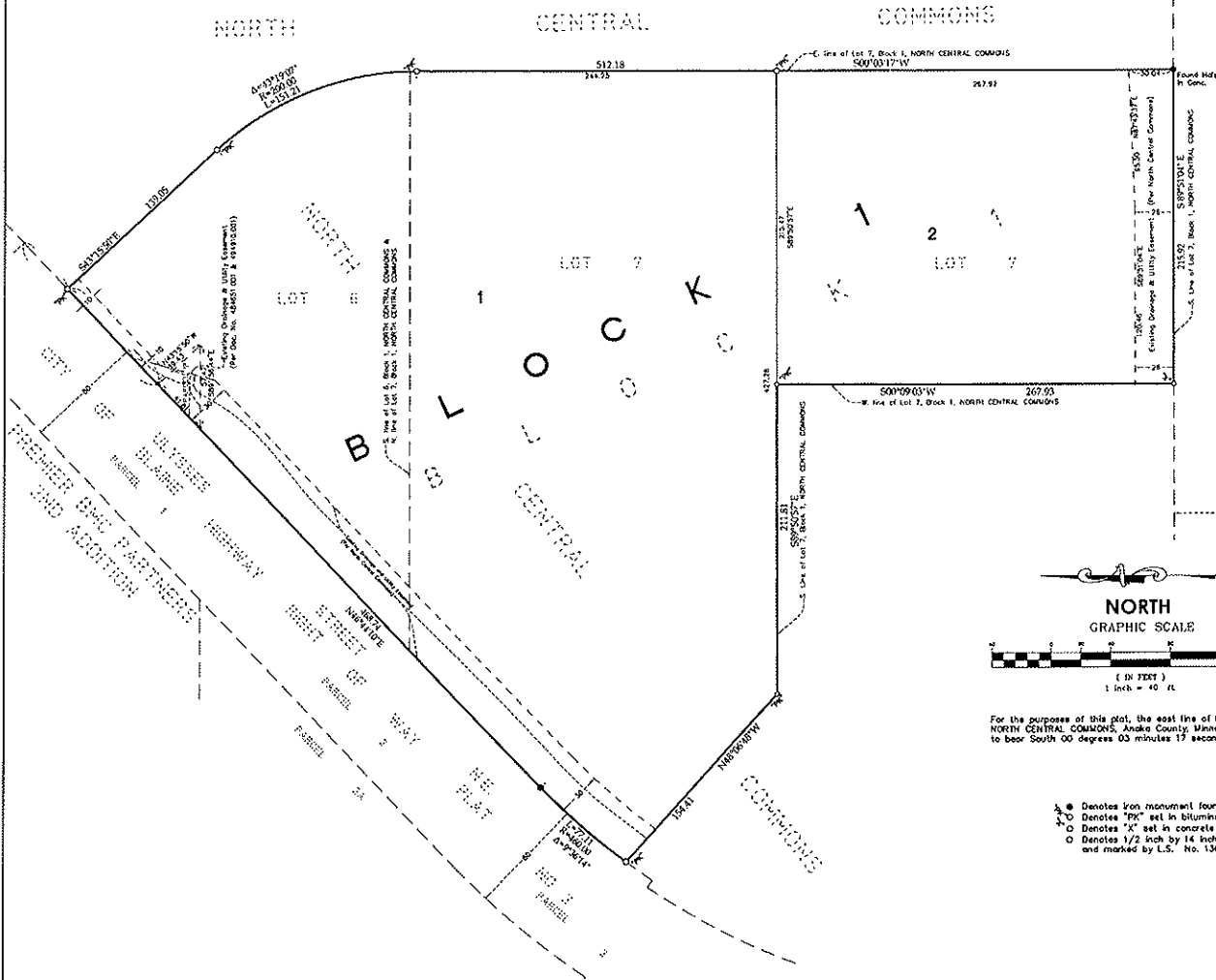


**Case File No. 14-0051**



# BLAINE ALZIMERS SPECIAL CARE CENTER

CITY OF BLAINE  
COUNTY OF ANOKA  
SEC. 8, T. 31, R. 23



KNOW ALL PERSONS BY THESE PRESENTS: That North Central Properties, Inc., a Minnesota corporation, owner of the following described property:  
 Lot 8, Block 1, North Central Commons, Anoka County, Minnesota.  
 And  
 Lot 7, Block 1, North Central Commons, Anoka County, Minnesota.  
 Has caused the same to be surveyed and plotted as BLAINE ALZIMERS SPECIAL CARE CENTER,  
 in which whereof said North Central Properties, Inc., a Minnesota corporation, has caused these presents to be signed by its proper officer this \_\_\_\_\_ day of \_\_\_\_\_, 20\_\_\_\_,  
 NORTH CENTRAL PROPERTIES, INC.

Paul Stone, President  
 STATE OF MINNESOTA  
 COUNTY OF \_\_\_\_\_  
 This instrument was acknowledged before me this \_\_\_\_\_ day of \_\_\_\_\_, 20\_\_\_\_, by Paul Stone, President of North Central Properties, Inc., a Minnesota corporation.  
 History Public: \_\_\_\_\_ County, Minnesota  
 My Commission expires \_\_\_\_\_

I, Lyle C. Reynolds do hereby certify that this plat was prepared by me or under my direct supervision that I am a duly Licensed Land Surveyor in the State of Minnesota, that this plat is a correct representation of the boundary survey, that all mathematical data and data are correctly depicted on this plat, that all monuments depicted on this plat have been, or will be correctly set within one year from the date of this instrument and are shown, or defined in of public ways are shown and labeled on this plat.  
 Dated this \_\_\_\_\_ day of \_\_\_\_\_, 20\_\_\_\_

Lyle C. Reynolds, Licensed Land Surveyor  
 Minnesota License Number 13072

STATE OF MINNESOTA  
 COUNTY OF \_\_\_\_\_  
 This instrument was acknowledged before me this \_\_\_\_\_ day of \_\_\_\_\_, 20\_\_\_\_, by Lyle C. Reynolds.  
 History Public: \_\_\_\_\_ County, Minnesota  
 My Commission expires \_\_\_\_\_

City Council, City of Blaine, Minnesota  
 This plat of BLAINE ALZIMERS SPECIAL CARE CENTER was approved and accepted by the City Council of the City of Blaine, Minnesota at a regular meeting thereof held this \_\_\_\_\_ day of \_\_\_\_\_, 20\_\_\_\_, and said plat is in compliance with the provisions of Minnesota Statutes, Section 205.01, Sub. 2.

City Council, City of Blaine, Minnesota  
 By \_\_\_\_\_ Mayor By \_\_\_\_\_ Clerk

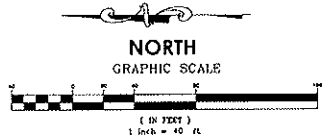
COUNTY SURVEYOR  
 I hereby certify that in accordance with Minnesota Statutes, Section 205.01, Sub. 11, this plat has been referred and approved this \_\_\_\_\_ day of \_\_\_\_\_, 20\_\_\_\_.  
 By \_\_\_\_\_  
 Lory D. Hoken, Anoka County Surveyor

COUNTY AUDITOR/TREASURER  
 Pursuant to Minnesota Statutes, Section 205.01, Sub. 9, fees payable in the year 20\_\_\_\_ on the land heretofore described have been paid. Also, pursuant to Minnesota Statutes, Section 272.12, there are no delinquent taxes and transfer entered this \_\_\_\_\_ day of \_\_\_\_\_, 20\_\_\_\_.

Property Tax Administrator  
 By \_\_\_\_\_ Deputy  
 County Recorder/Registrar of Titles  
 County of Anoka, State of Minnesota

I hereby certify that this plat of BLAINE ALZIMERS SPECIAL CARE CENTER was filed in the office of the County Recorder/Registrar of Titles for public record on this \_\_\_\_\_ day of \_\_\_\_\_, 20\_\_\_\_, at \_\_\_\_\_ o'clock \_\_\_\_\_, and was duly recorded in Book \_\_\_\_\_ Page \_\_\_\_\_ of Document Number \_\_\_\_\_.  
 County Recorder/Registrar of Titles  
 By \_\_\_\_\_ Deputy

- Denotes iron monument found.
- Denotes "PK" set in bituminous
- Denotes "X" set in concrete
- Denotes 1/2 inch by 1/4 inch iron monument set and marked by L.S. No. 13072.



For the purposes of this plat, the east line of Lot 7, Block 1, NORTH CENTRAL COMMONS, Anoka County, Minnesota is assumed to bear South 00 degrees 03 minutes 17 seconds West.

