

Case File No. 16-0030
Quail Creek 10th Addition

Blaine Planning Department / 10801 Town Square Dr NE / Blaine, MN 55449 / (763) 785-6180



QUAIL CREEK 10TH ADDITION

CITY OF BLAINE
COUNTY OF ANOKA
SECTIONS 3 & 4, TWP. 31, RGE. 23

TWIN BIRCH ACRES

HIDDEN
FOREST
W
E
S
T

KNOW ALL PERSONS BY THESE PRESENTS: That PSG Meridian, LLC, a Wyoming limited liability company, owner of the following described property:

Outlot H, QUAIL CREEK 2ND ADDITION, according to the recorded plat thereof, Anoka County, Minnesota

AND

Outlot C, QUAIL CREEK 8TH ADDITION, according to the recorded plat thereof, Anoka County, Minnesota

AND

Outlot A, QUAIL CREEK 9TH ADDITION, according to the recorded plat thereof, Anoka County, Minnesota

Has caused the same to be surveyed and platted as QUAIL CREEK 10TH ADDITION and does hereby dedicate to the public for public use the public ways and the drainage and utility easements as created by this plat.

In witness whereof said PSG Meridian, LLC, a Wyoming limited liability company, has caused these presents to be signed by its proper officer this ____ day of _____, 20__.

PSG MERIDIAN, LLC

Paul S. Gagnon, Chief Manager

STATE OF _____

COUNTY OF _____

This instrument was acknowledged before me on _____ by Paul S. Gagnon, Chief Manager of PSG Meridian, LLC, a Wyoming limited liability company.

Notary Public, _____

My commission expires _____

I, Thomas R. Balluff do hereby certify that this plat was prepared by me or under my direct supervision; that I am a duly Licensed Land Surveyor in the State of Minnesota; that this plat is a correct representation of the boundary survey; that all mathematical data and labels are correctly designated on this plat; that all monuments depicted on this plat have been, or will be correctly set within one year; that all water boundaries and wet lands, as defined in Minnesota Statutes, Section 505.01, Subd. 3, as of the date of this certificate are shown and labeled on this plat; and all public ways are shown and labeled on this plat.

Dated this ____ day of _____, 20__.

Thomas R. Balluff, Licensed Land
Surveyor Minnesota License No. 40361

STATE OF _____

COUNTY OF _____

This instrument was acknowledged before me on _____ by Thomas R. Balluff.

Notary Public, _____

My commission expires _____

CITY COUNCIL, CITY OF BLAINE, MINNESOTA

This plat of QUAIL CREEK 10TH ADDITION was approved and accepted by the City Council of the City of Blaine, Minnesota at a regular meeting thereof held this ____ day of _____, 20__ and said plat is in compliance with the provisions of Minnesota Statutes, Section 505.03, Subd. 2.

CITY COUNCIL, CITY OF BLAINE, MINNESOTA

By: _____, Mayor By: _____, Clerk

COUNTY SURVEYOR

I hereby certify that in accordance with Minnesota Statutes, Section 505.021, Subd. 11, this plat has been reviewed and approved this ____ day of _____, 20__.

By: _____

Larry D. Hoium, Anoka County Surveyor

COUNTY AUDITOR/TREASURER

Pursuant to Minnesota Statutes, Section 505.021, Subd. 9, taxes payable in the year 20__ on the land hereinbefore described have been paid. Also, pursuant to Minnesota Statutes, Section 272.12, there are no delinquent taxes and transfer entered this ____ day of _____, 20__.

Property Tax Administrator

By: _____, Deputy

COUNTY RECORDER/REGISTRAR OF TITLES

County of Anoka, State of Minnesota

I hereby certify that this plat of QUAIL CREEK 10TH ADDITION was filed in the office of the County Recorder/Registrar of Titles for public record on this ____ day of _____, 20__, at ____ o'clock ____M. and was duly recorded as Document Number _____.

County Recorder/Registrar of Titles

By: _____, Deputy

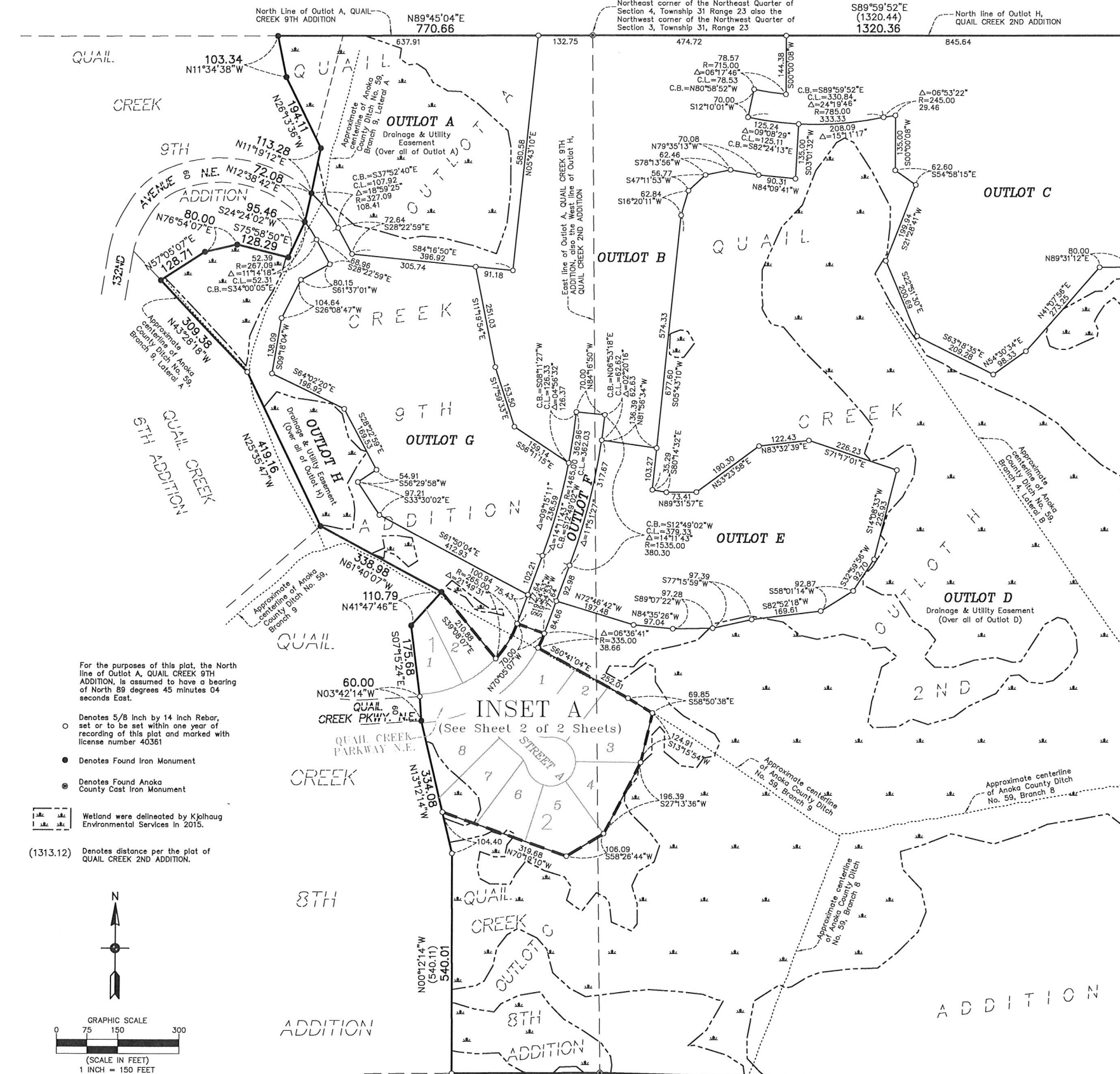
W
A
G
A
M
O
N
R
A
N
C
H
2
N
D
A
D
D
I
T
I
O
N

2581.05
(2581.10)
S00°28'48"E

W
E
S
T
H
A
R
P
E
R
S

South Line of Outlot H of QUAIL CREEK 2ND ADDITION

WOODS AT QUAIL CREEK 4TH ADDITION



For the purposes of this plat, the North line of Outlot A, QUAIL CREEK 9TH ADDITION, is assumed to have a bearing of North 89 degrees 45 minutes 04 seconds East.

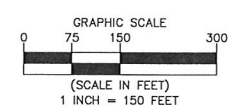
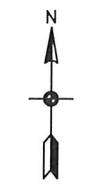
Denotes 5/8 inch by 14 inch Rebar, set or to be set within one year of recording of this plat and marked with license number 40361

Denotes Found Iron Monument

Denotes Found Anoka County Cast Iron Monument

Wetland were delineated by Kjolhaug Environmental Services in 2015.

(1313.12) Denotes distance per the plat of QUAIL CREEK 2ND ADDITION.



South Line of Outlot C, QUAIL CREEK 8TH ADDITION

East Quarter corner of Section 4, Township 31, Range 23 also the West Quarter corner of Section 3, Township 31, Range 23

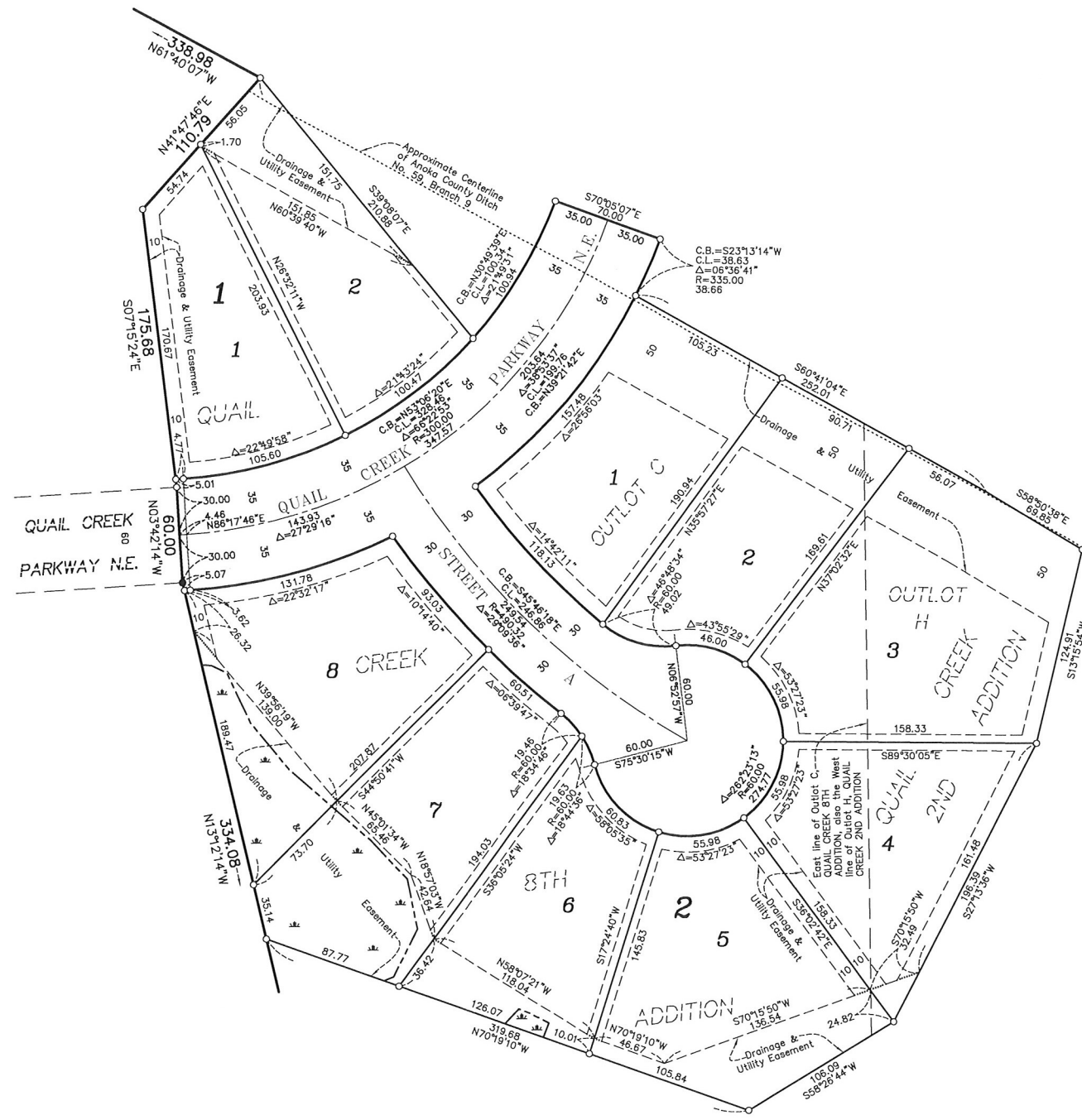
1313.19
(1313.12)
N88°31'42"W

South Line of Outlot H of QUAIL CREEK 2ND ADDITION

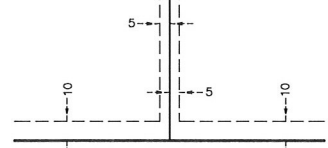
QUAIL CREEK 10TH ADDITION

CITY OF BLAINE
 COUNTY OF ANOKA
 SECTIONS 3 & 4, TWP. 31, RGE. 23

INSET A



DRAINAGE AND UTILITY EASEMENTS ARE SHOWN THUS:



being 5 feet in width, and adjoining side lot lines, and 10 feet in width and adjoining right of way lines and rear lot lines unless otherwise shown on this plat.

For the purposes of this plat, the North line of Outlot A, QUAIL CREEK 9TH ADDITION, is assumed to have a bearing of North 89 degrees 45 minutes 04 seconds East.

- Denotes 5/8 Inch by 14 Inch Rebar, set or to be set within one year of recording of this plat and marked with license number 40361
- Denotes Found Iron Monument unless otherwise noted

Wetland were delineated by Kjolhaug Environmental Services in 2015.

