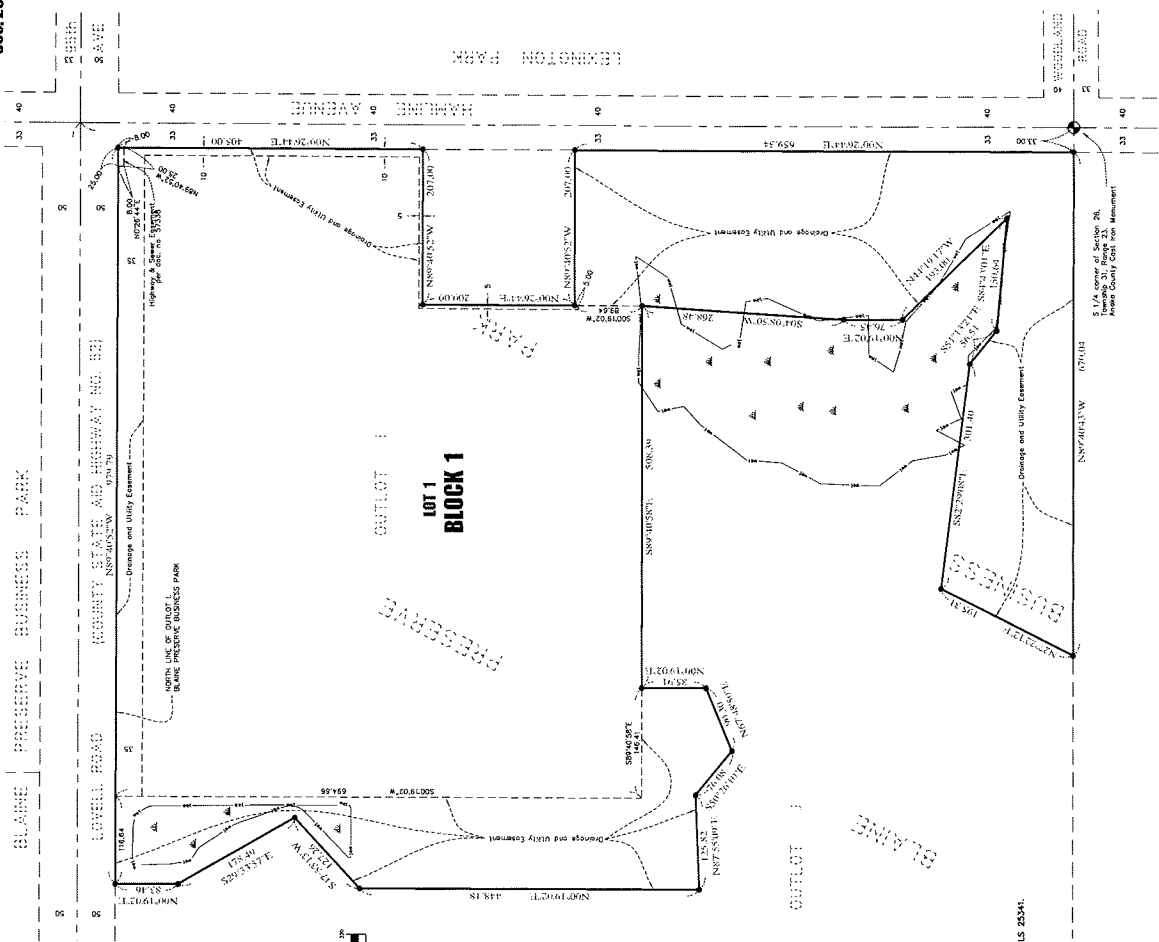


Case File No. 13-0006



NORTHEAST METROPOLITAN SCHOOL DISTRICT 916

City of Blaine
County of Anoka
Sec. 26, T31, R23



KNOW ALL PERSONS BY THESE PRESENTS: That Northeast Metropolitan Intermediate School District 916, a Government special school district, owner of the following described property:

Outlot 1, Blaine Preserve Business Park, Anoka County, Minnesota.

Has caused the same to be surveyed and platted as NORTHEAST METROPOLITAN SCHOOL DISTRICT 916 and does hereby dedicate to the public for public use the acreage and utility easements as shown by this plat.

In witness whereof said Northeast Metropolitan Intermediate School District 916, a Government special school district, has caused these presents to be signed by its proper officer this _____ day of _____, 20____.

NORTHEAST METROPOLITAN INTERMEDIATE SCHOOL DISTRICT 916
_____, as School Board Clerk

Karen Ludsko

STATE OF MINNESOTA

COUNTY OF _____, to-wit: _____, County of _____, State of Minnesota, do hereby certify that the above and foregoing plat was approved and accepted by the Board of Northeast Metropolitan Intermediate School District 916, a Government special school district.

Notary Public: _____ County, Minnesota
My Commission Expires _____

I, Daniel W. Overmiller, do hereby certify that this plat was prepared by me or under my direct supervision; that I am a duly licensed and duly sworn surveyor in the State of Minnesota; that the plat was prepared and the monuments depicted on the plat have been set; that all water boundaries and all other boundaries shown on this plat were correctly surveyed and shown and labeled on this plat; and that all public work was shown and labeled on this plat.

Dated this _____ day of _____, 20____.

Daniel W. Overmiller, Licensed Land Surveyor
Minnesota License No. 25341

STATE OF MINNESOTA

COUNTY OF _____, to-wit: _____, County of _____, State of Minnesota, do hereby certify that the above and foregoing plat was prepared and accepted by the City Council of the City of Blaine, Minnesota.

Notary Public: _____ County, Minnesota
My Commission Expires _____

City Council, City of Blaine, Minnesota

This plat of NORTHEAST METROPOLITAN SCHOOL DISTRICT 916 was approved and accepted by the City Council of the City of Blaine, Minnesota at a regular meeting held on the _____ day of _____, 20____, and said plat is in compliance with the provisions of Minnesota Statutes, Section 460.33, Subd. 2.

City Council, City of Blaine, Minnesota

By _____ Mayor

By _____ Clerk

County Surveyor

I hereby certify that in accordance with Minnesota Statutes, Section 460.071, Subd. II, this plat has been reviewed and approved this _____ day of _____, 20____.

Larry D. Nelson
Anoka County Surveyor

- ◆ DENOTES ANOKA COUNTY CAST IRON MONUMENT.
- ▲ DENOTES ANOKA COUNTY FOUND IRON MONUMENT WITH CAP MARKED ALS 25341.
- △ DENOTES MET LAND
- DENOTES MET LAND LINE
- DENOTES DRAINAGE AND UTILITY EXISTENCE

For the purposes of this plat, the North line of the Outlot 1, Blaine Preserve Business Park, Anoka County, Minnesota, is assumed to have a bearing of N89°40'52" W.

E. G. RUD & SONS, INC.
Professional Land Surveyors