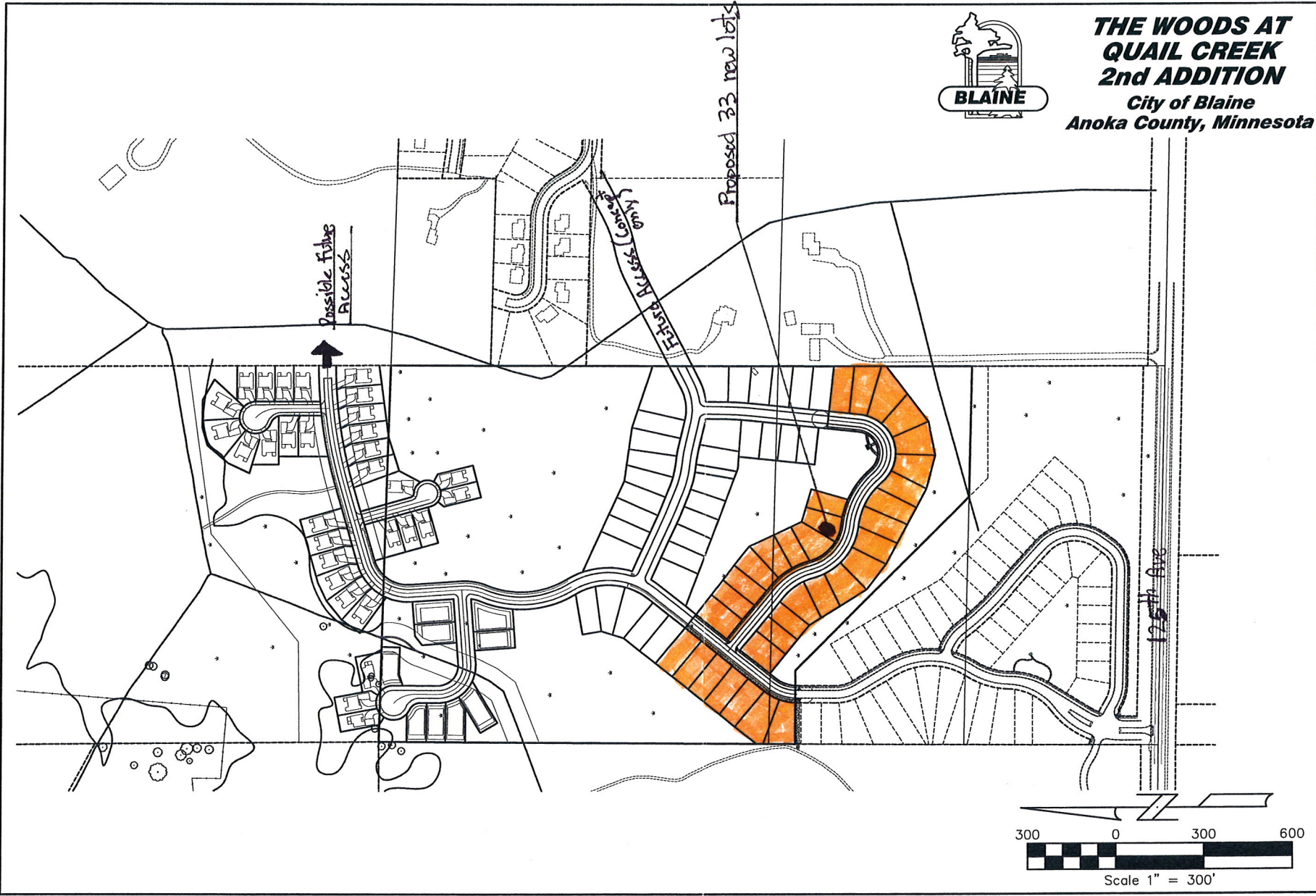


Case File No. 13-0017





**THE WOODS AT
QUAIL CREEK
2nd ADDITION**
City of Blaine
Anoka County, Minnesota

REVISIONS	DATE	BY

CONTRACTOR

PREPARED BY:
HEDLUND
PLANNING ENGINEERING SURVEYING
2005 Pine Oak Drive, Suite 202
Eagan, Minnesota 55122
PHONE: (612) 400-0050

SHEET TITLE:
**WOODS AT QUAIL CREEK 2ND
ADDITION - ROAD CONNECTION**

PREPARED FOR:
LENMAR
125th Ave, P.O. Box 20391
Worship, Minnesota 55391
Phone: (612) 773-7401

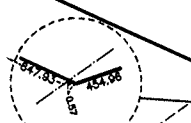
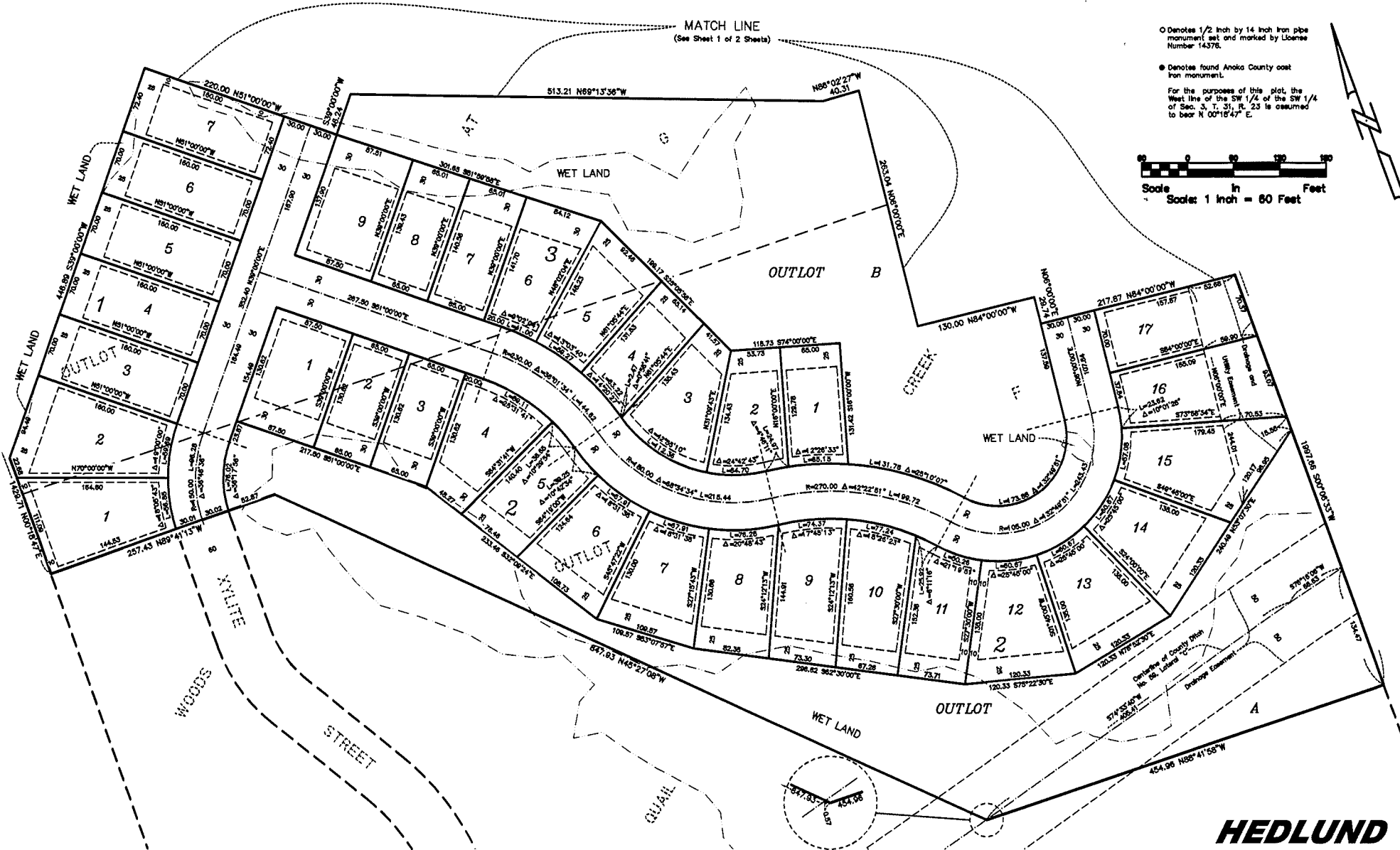
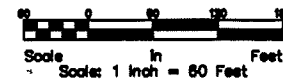
DATE	SHEET NUMBER
3/15/13	1

WOODS AT QUAIL CREEK 2ND ADDITION



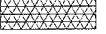
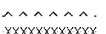
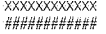
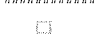

City of Blaine
County of Anoka
Sec. 3, T. 31, R. 23

MATCH LINE
(See Sheet 1 of 2 Sheets)

- Denotes 1/2 inch by 14 inch iron pipe monument set and marked by License Number 14376.
 - Denotes found Anoka County cast iron monument.
- For the purposes of this plot, the West line of the SW 1/4 of the SW 1/4 of Sec. 3, T. 31, R. 23 is assumed to bear N 00°18'47" E.



EROSION CONTROL LEGEND:

-  WOOD FIBER BLANKET
-  ROCK CONSTRUCTION ENTRANCE
-  CHECK DAM
-  SEDIMENT TRAP OUTLET
-  TREE PROTECTION
-  SILT FENCE
-  CB INLET PROTECTION

GENERAL NOTES:

- 1.) SEE GRADING AND EROSION CONTROL DETAIL SHEET FOR DETAILED INFORMATION.
- TOTAL DISTURBED AREA = 12.32 ACRES**



WOODS AT QUAIL CREEK 2ND ADDITION
 City of Blaine
 Anoka County, Minnesota

PROJECT NUMBER	041025A
DATE	
BY	
REVISIONS	
REMARKS	

CONTRACTOR: I hereby certify that this plan, specification, or report was prepared by me or that I am a duly Licensed Professional Engineer under the laws of the State of Minnesota.

DATE: _____
 RANDALL C. HEDLUND, MN. LIC. NO. 19579

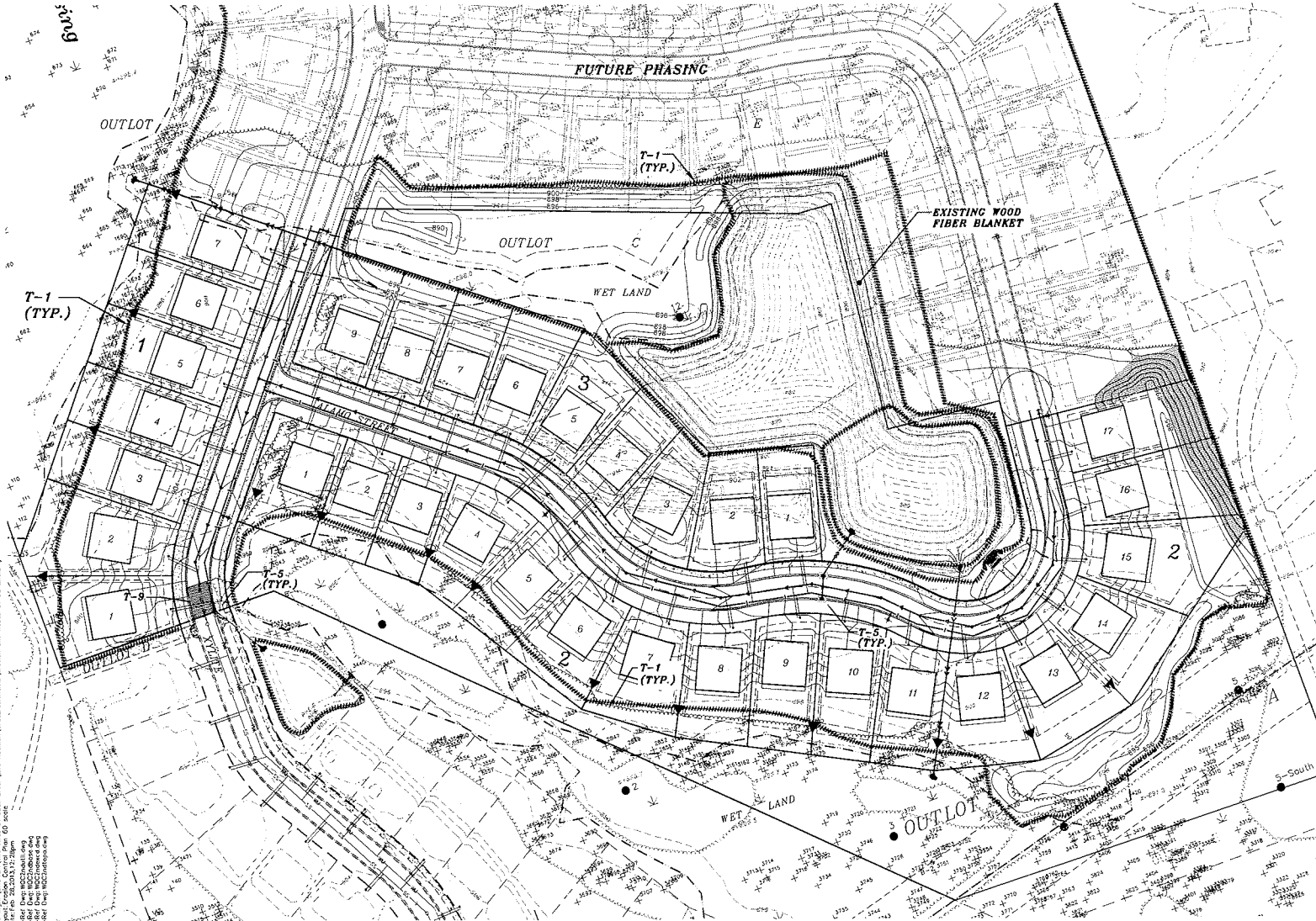
PREPARED BY: **HEDLUND**
 CIVIL ENGINEERING
 2005 Elm Oak Drive
 Eden, MN 55122
 Fax: (612) 405-6600



SHEET TITLE: **WOODS AT QUAIL CREEK 2ND ADDITION GRADING PLAN**

PREPARED FOR: **LENNAR**
 935 East Woyzata Blvd.
 Woyzata, Minnesota 55391
 Phone: (952) 412-7401

DATE	02/28/2013
REV.	-/-/-/-
SHEET NUMBER	CE-1



PRELIMINARY
 NOT FOR CONSTRUCTION

NOTE
 SCALE CHANGE



Scale 1" = 60'

Geometric: WOODS AT QUAIL CREEK 2ND ADDITION GRADING PLAN SHEET NO. CE-1
 Date: 02/28/2013
 Author: RCH
 Checker: RCH
 Designer: RCH
 Engineer: RCH
 Project: WOODS AT QUAIL CREEK 2ND ADDITION GRADING PLAN