

Case File No. 17-0041
Parkside North - CUP Amendment

Blaine Planning Department / 10801 Town Square Dr NE / Blaine, MN 55449 / (763) 785-6180

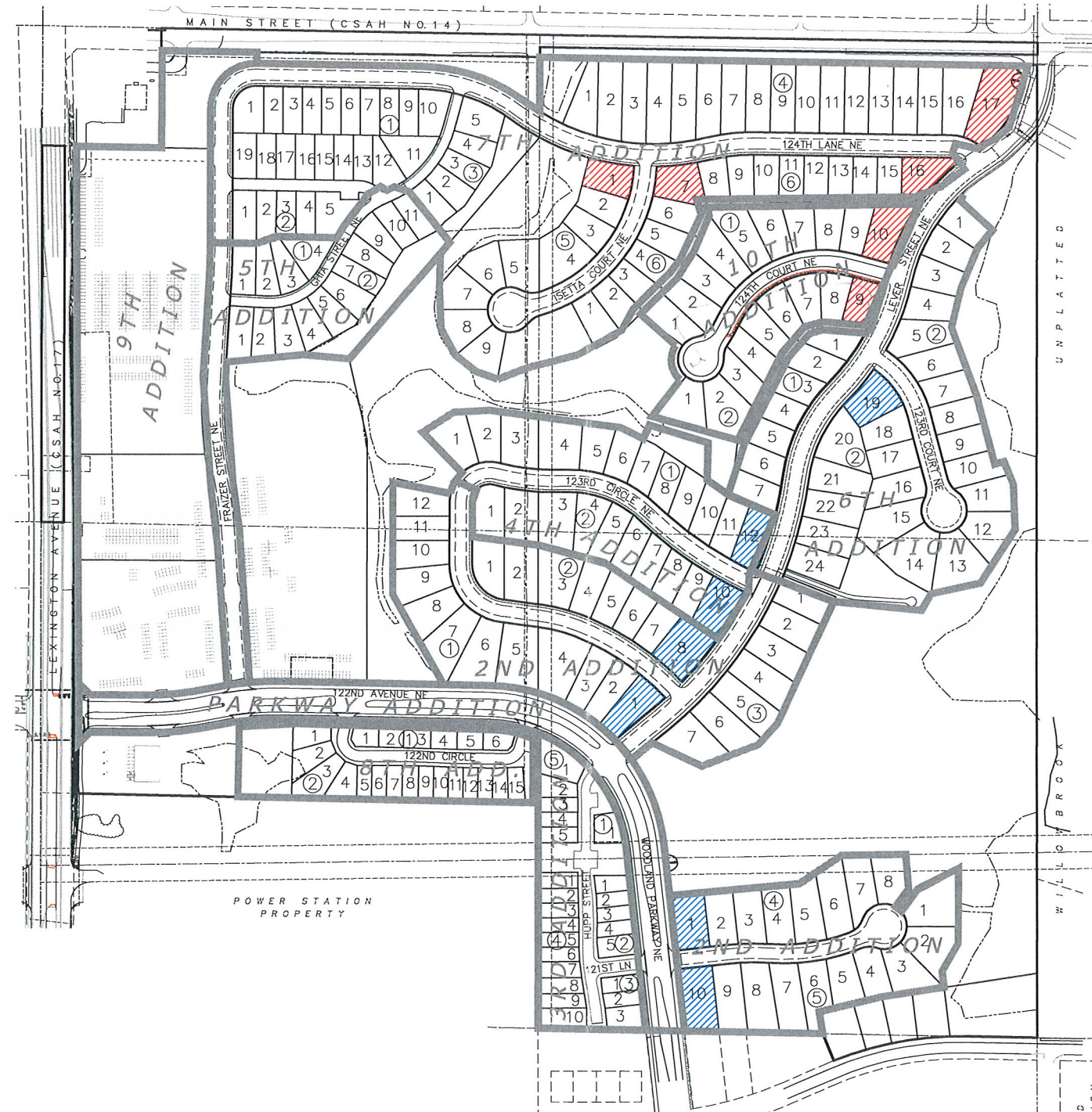
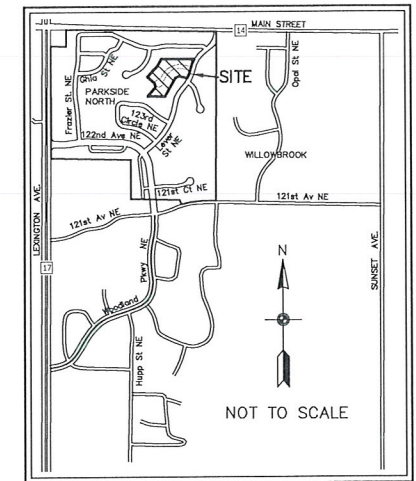


PARKSIDE NORTH

20' CORNER SETBACK EXHIBIT

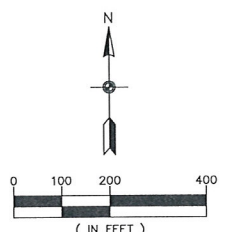
VICINITY MAP

Blaine, Minnesota



20' CORNER SETBACK LEGEND

- 7TH & 10TH ADDITIONS
- PREVIOUS ADDITIONS



BENCHMARKS	
1.	TOP NUT OF HYDRANT LYING BETWEEN LOTS 12 & 13, BLOCK 1, PARKSIDE NORTH 7TH ADDITION. ELEVATION= 907.02 (NGVD 1929)
2.	TOP NUT OF HYDRANT LOCATED IN THE NORTH QUADRANT OF THE INTERSECTION OF LEVER ST. N.E. AND 124TH LN. N.E. ELEVATION: 907.73 (NGVD 1929)



Carlson McCain

- environmental
- engineering
- surveying

3890 Pheasant Ridge Dr #100
Blaine, MN 55449
Phone: (763) 489-7900
Fax: (763) 489-7959
www.carlsonmccain.com

I hereby certify that this plan, specification or report was prepared by me or under my direct supervision and that I am a duly Licensed Professional Engineer under the laws of the State of Minnesota

Print Name: Brian J. Krystofiak, P.E.
Signature: _____
Date: 8/23/17 License #: 25063

Drawn: KRO
Designed: BJK
Date: 8/23/17

Revisions:
1.

PAXMAR, LLC.
3495 Northdale Blvd. NW, Suite 210
Coon Rapids, MN 55448

PARKSIDE NORTH
Blaine, Minnesota

20' CORNER SETBACK EXHIBIT

Save Date: 08/28/17 | Job: 13221 - 3249,3234 - Finn farm/road/survey/layouts_exhibit/20 setback_exh.dwg