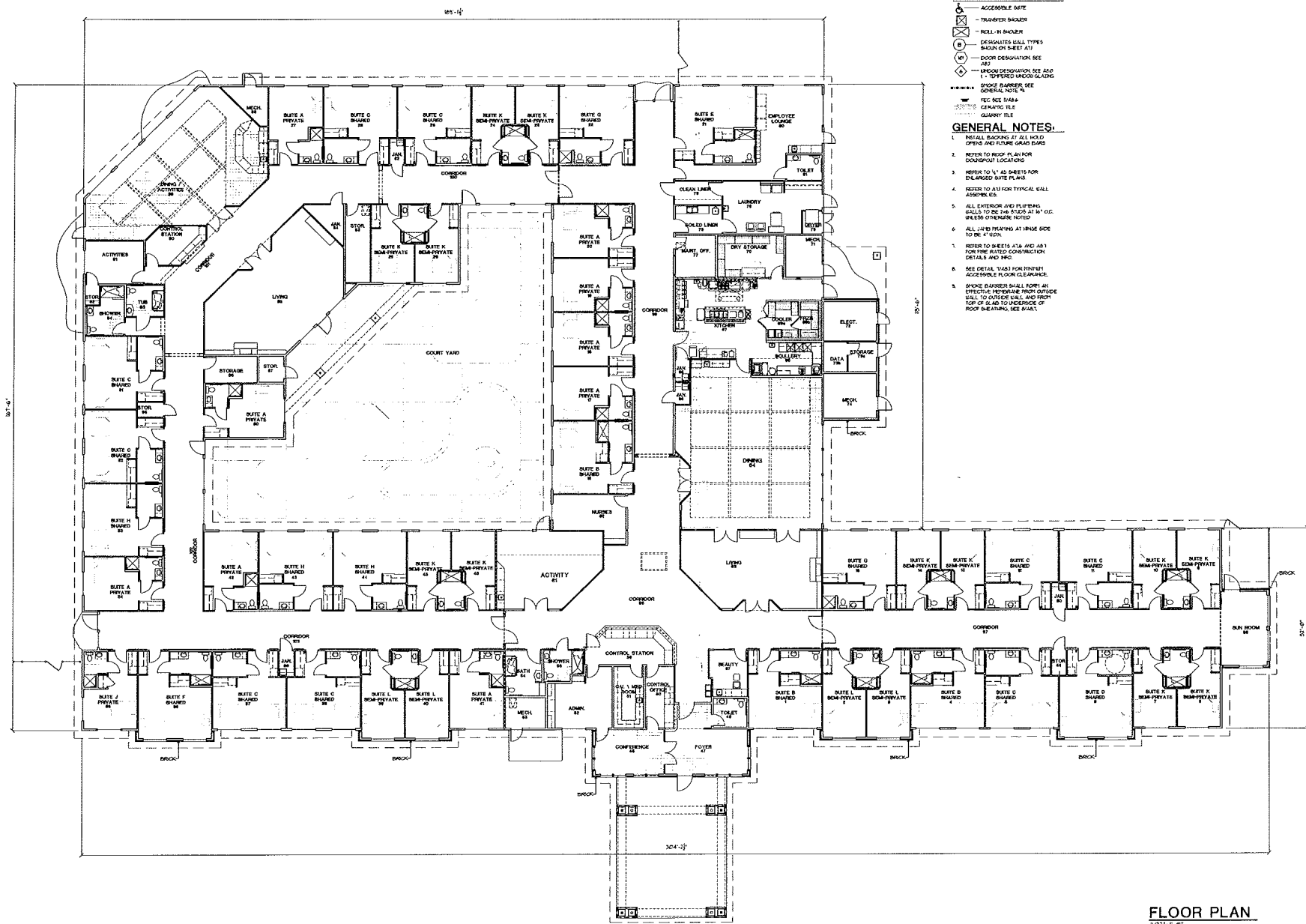


Case File No. 14-0051



10/17/2014 10:11 AM 10/17/2014 10:11 AM 10/17/2014 10:11 AM 10/17/2014 10:11 AM 10/17/2014 10:11 AM 10/17/2014 10:11 AM 10/17/2014 10:11 AM 10/17/2014 10:11 AM 10/17/2014 10:11 AM 10/17/2014 10:11 AM



- LEGEND**
- ⊕ ACCESSIBLE RAMP
 - ⊗ TRANSFER SHOWER
 - ⊖ ROLL-IN SHOWER
 - DESIGNATED WALL TYPES SHOWN ON SHEET A11
 - ⊖ DOOR DESIGNATION SEE A11
 - ⊖ WINDOW DESIGNATION SEE A11
 - ⊖ 1" TYPED BRICK/LOADING
 - ⊖ SMOKE BARRIER SEE GENERAL NOTE 1
 - ⊖ REC. SEE S419
 - ⊖ CERAMIC TILE
 - ⊖ GRANITE TILE

- GENERAL NOTES:**
1. RETAIL BACKING AT ALL HOLD OPENS AND FUTURE GRAB BARS
 2. REFER TO ROOF PLAN FOR CORRIDOR LOCATIONS
 3. REFER TO 'A' AS SCHEDULE FOR ENLARGED GATE PLANS
 4. REFER TO 'A11' FOR TYPICAL GATE ASSEMBLY
 5. ALL EXTERIOR AND FLYING WALLS TO BE 2x6 STUDS AT 16" O.C. WHERE OVERLAPS NOTED
 6. ALL JAMB FINISH AT INSIDE SIDE TO BE 4" O.D.
 7. REFER TO SHEETS A16 AND A17 FOR THE RATED CONSTRUCTION DETAILS AND IFC.
 8. SEE DETAIL T103 FOR TYPICAL ACCESSIBLE FLOOR CLEARANCE
 9. SMOKE BARRIER SHALL FORM AN EFFECTIVE BARRIER FROM OUTSIDE GALL TO OUTSIDE WALL AND FROM TOP OF GALL TO UNDERGIRD OF ROOF DECKING. SEE S411.

lenity
 architecture
 2000 W. 10th Street, Suite 100
 Minneapolis, MN 55425
 TEL: 612.338.1000 FAX: 612.338.1005

JEA SENIOR LIVING
 Management • Development
 1000 W. 10th Street, Suite 100
 Minneapolis, MN 55425

BLAINE ALZHEIMER'S SPECIAL CARE CENTER
 1000 W. 10th Street, Suite 100
 Minneapolis, MN 55425

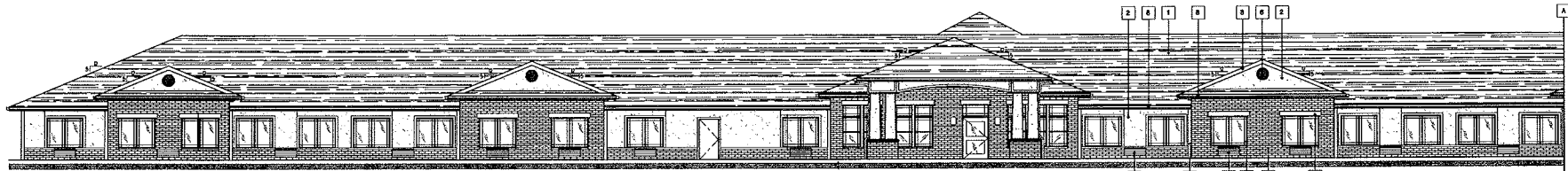
FLOOR PLAN

DATE
8/6/2014

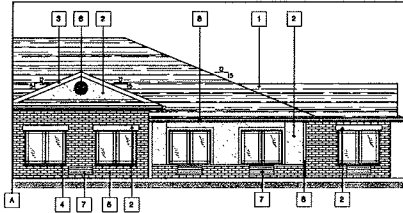
REVISED DATE

SHEET
A
3.1

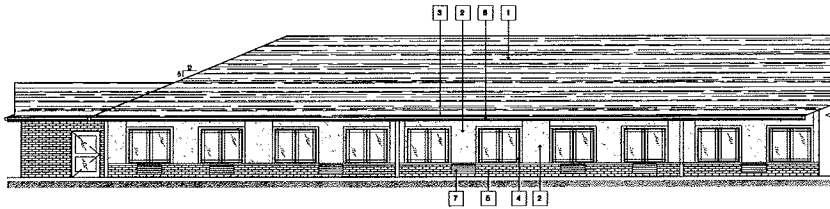
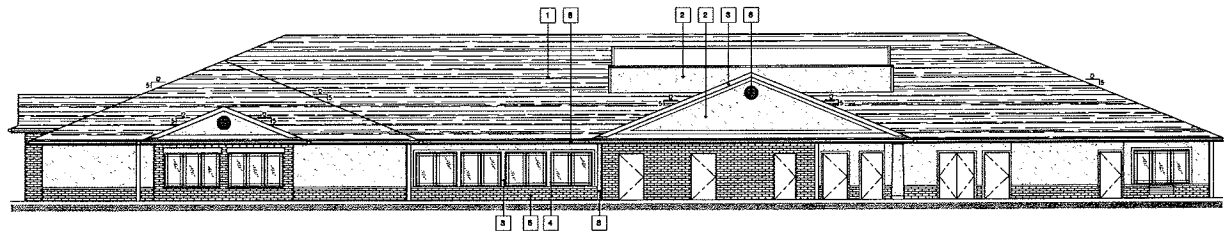
FLOOR PLAN
303'x1'-0"



A FRONT ELEVATION
SCALE: 1/8"=1'-0" (TYP. ALL DIMS THIS SHEET 50/0)



B SIDE ELEVATION
SCALE: 1/8"=1'-0" (TYP. ALL DIMS THIS SHEET 50/0)



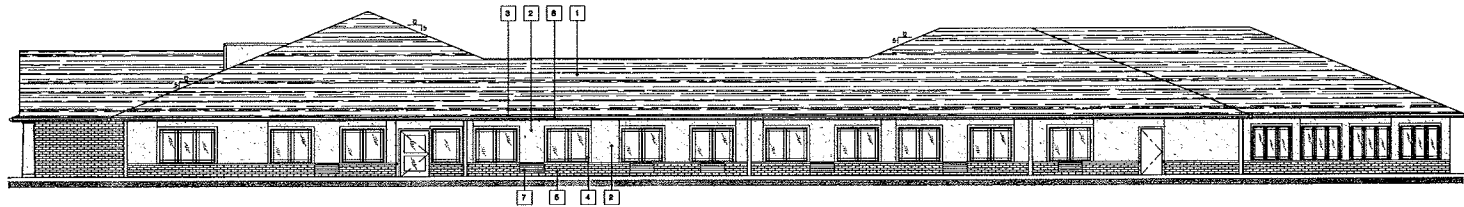
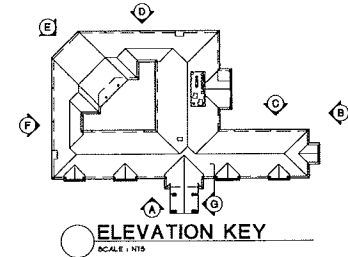
C REAR ELEVATION
SCALE: 1/8"=1'-0" (TYP. ALL DIMS THIS SHEET 50/0)

AT FINAL INSPECTION, INFORMATION ON ROUTINE MAINTENANCE SUCH AS CAULKING, PAINTING, ETC. SHALL BE PLACED IN THE BUILDING.

NOTE: STUCCO SYSTEM TO BE USED IS A STANDARD 3 COAT SYSTEM OVER METAL LATH AS DEFINED IN SECTION 2512 OF THE 2011 OBC

COLOR KEY	
1	ARCH COPING (105 LB PER SQ FT) BRICK WEATHERSIDE - PALMER
2	STUCCO COLOR: SPANISH ULLIANS - CROSSANT SU 758
3	TRIM BOARD COLOR: SPANISH ULLIANS - TANSARD SU 758
4	VENT WHITE UNGLAZED LEADOUS COLOR: BEIGE
5	METAL MATERIALS OR LOCALLY SOURCED EQUIVALENT - SUBJECT TO ARCHITECT'S OWNER APPROVAL COLOR: RED VARIANTE
6	VENTS COLOR: SPANISH ULLIANS - CROSSANT SU 758
7	FLAZ MATCH COLOR TO FLAZ ADJACENT BRICK COLOR: TYP.
8	GUTTER COLOR: SPANISH ULLIANS - TANSARD SU 758

NOTE: ALL COLORS MUST BE SUBMITTED TO ARCHITECT AND OWNER FOR APPROVAL PRIOR TO ORDERING. BOTH ARCHITECT AND OWNER MUST SIGN OFF



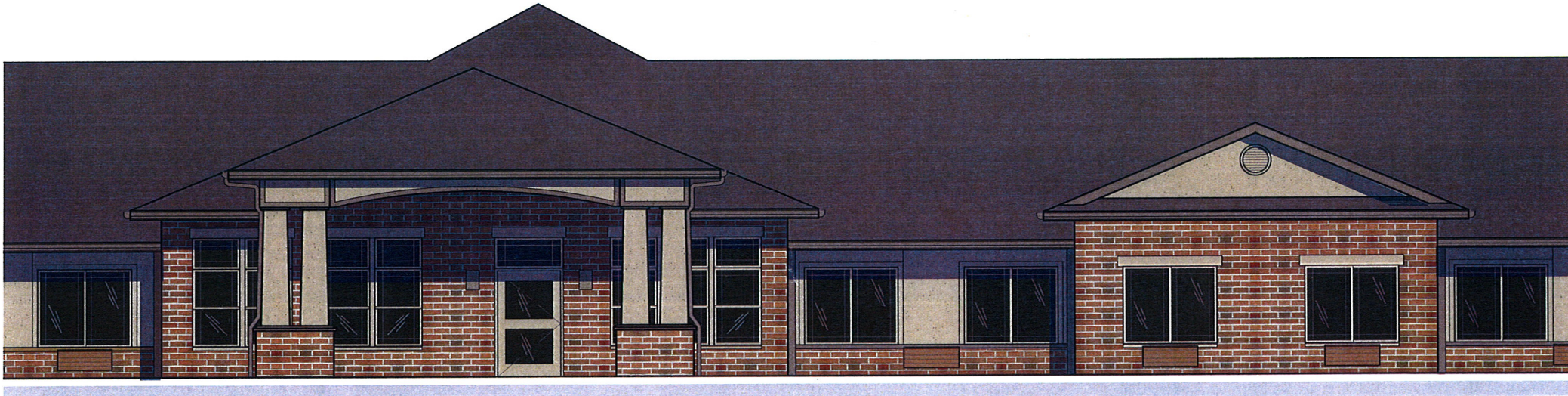
D REAR ELEVATION
SCALE: 1/8"=1'-0" (TYP. ALL DIMS THIS SHEET 50/0)

Roofing: Weatherwood

Stucco: Sherwin Williams #7716 - Croissant

Trim Board: Sherwin Williams #7538 - Tamarind

Brick: Mutual Materials - Red Varitone



lenity
architecture
3150 Kettle Court SE, Salem, Oregon 97301
P 503 399 1090 F 503 399 0565 W lenityarchitecture.com

Blaine Alzheimer's Special Care Center

Blaine, Minnesota

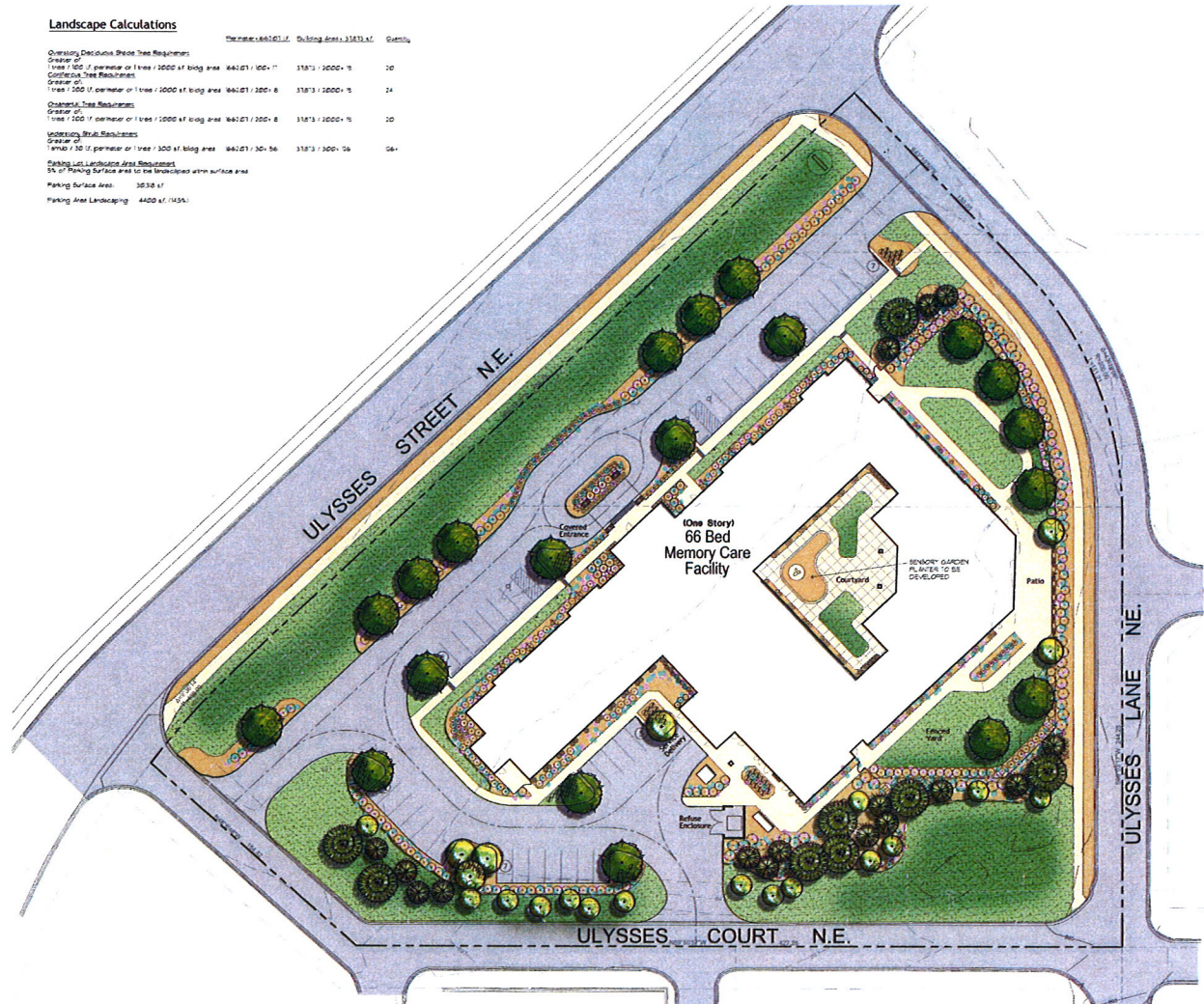
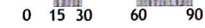

JEA SENIOR LIVING
Management • Development

Landscape Calculations

Requirement	Quantity	Planting Area (sq. ft.)	Quantity
Overstory Deciduous Shade Tree Requirement	Greater of: 1 tree / 200' perimeter or 1 tree / 2000 sq. ft. biog area	840.01 / 100' = 8.4	318'3" / 2000' = 0.16
Overstory Tree Requirement	Greater of: 1 tree / 1000' perimeter or 1 tree / 2000 sq. ft. biog area	840.01 / 1000' = 0.84	318'3" / 2000' = 0.16
Overstory Tree Requirement	Greater of: 1 tree / 1000' perimeter or 1 tree / 2000 sq. ft. biog area	840.01 / 1000' = 0.84	318'3" / 2000' = 0.16
Understory Tree Requirement	Greater of: 1 tree / 30' perimeter or 1 tree / 300 sq. ft. biog area	840.01 / 30' = 28	318'3" / 300' = 1.06
Planting Area Requirement	1% of Parking Surface Area to be landscaped with surface area	353.8 sq. ft.	
Parking Area Landscaping	4400 sq. ft. (14%)		

Preliminary Landscape Plan

DATE: 4 August 2014
SCALE: 1" = 30'



Planting Legend

Symbol	Botanical Name / Common Name	Quantity	Size / Comments
(Symbol)	Quercus alba	20	2 1/2" caliper B&B Standard
(Symbol)	Thuja occidentalis	4	1" caliper B&B Standard
(Symbol)	Juniperus horizontalis	2	1" caliper B&B Standard
(Symbol)	Prunella virginiana	14	1" caliper B&B Standard
(Symbol)	Rosa glauca	6	1-2" B&B Low-wooded
(Symbol)	Amelanchier canadensis	4	1-2" B&B Low-wooded
(Symbol)	Spirea japonica	1	3 gal. container 14" in. height
(Symbol)	Juniperus horizontalis	44	3 gal. container 14" in. height
(Symbol)	Juniperus procumbens	11	3 gal. container 14" in. height
(Symbol)	Physocarpus opulifolius	36	3 gal. container 14" in. height
(Symbol)	Ulmus americana	17	3 gal. container 14" in. height
(Symbol)	Rosa glauca	11	3 gal. container 14" in. height
(Symbol)	Spirea japonica	35	3 gal. container 14" in. height
(Symbol)	Rosa glauca	18	3 gal. container 14" in. height
(Symbol)	Yucca filamentosa	44	3 gal. container 14" in. height
(Symbol)	Juniperus horizontalis	40	3 gal. container 14" in. height
(Symbol)	Rosa glauca	14	3 gal. container 14" in. height
(Symbol)	Physocarpus opulifolius	124	3 gal. container 14" in. height
(Symbol)	Yucca filamentosa	40	3 gal. container 14" in. height
(Symbol)	Spirea japonica	57	3 gal. container 14" in. height
(Symbol)	Berberis thunbergii	13	3 gal. container 14" in. height
(Symbol)	Rosa glauca	83	3 gal. container 14" in. height
(Symbol)	Buxa sempervirens	18	3 gal. container 14" in. height
(Symbol)	Cornus alternifolia	7	3 gal. container 14" in. height
(Symbol)	Grass / Perennials	11	1 gal. container
(Symbol)	Hydrangea	403	1 gal. container
(Symbol)	Perennials	48	1 gal. container
(Symbol)	Rudbeckia	36	1 gal. container
(Symbol)	Asplenium	36	1 gal. container
(Symbol)	Campanula	26	1 gal. container
(Symbol)	Ground Covers	10 sq. ft.	1" deep 8" dia. 100% coverage to all areas
(Symbol)	Low Area - Kentucky Bluegrass Stand	4350 sq. ft.	800' or less to be determined

lenity
architecture
3150 Kettle Court SE, Salem, Oregon 97301
#503 399 1690 #503 399 0565 www.lenityarchitecture.com

Blaine Alzheimer's Special Care Center
Blaine, Minnesota

JEAN SENIOR LIVING
Management • Development



Blaine Alzheimer's Special Care Center **Intersection of Ulysses Street NE & Ulysses Court NE**

CONCEPT

This is a state of the art, specialized memory care facility that focuses exclusively on Alzheimer's, dementia and related memory issues that afflict our aging seniors. This 24-hour, stand alone facility will accommodate up to 66 residents in a secure and homelike atmosphere, with dedicated and experienced staff and management. This facility will provide 40+ full time jobs within the community of Blaine and surrounding area.

Building Licensing: Comprehensive License and register as Housing with Services

Services include three prepared meals daily, housekeeping, laundering, and private bus transportation. Around the clock care and attention is provided to each resident on an individualized basis. Our programs are designed to build upon our residents' strengths. Resident rooms are spacious, comfortable and can accommodate favorite pieces of furniture.

TRAFFIC/PARKING

One parking space per two suites is sufficient for visitor and staff parking. Because residents do not drive, we expect less than two trips per day per suite for visitor and staff purposes, but without the peak hour trip generation. This is based on the Institute of Transportation Engineers report and is far below equivalent trips per unit for a multifamily project.

THE MANAGEMENT COMPANY

JEA Senior Living is a privately owned and operated management and development company based in Vancouver, Washington. JEA has been in operation for over 25 years and currently operates 20 special memory care facilities in 7 states: Washington, Oregon, California, Colorado, Texas, Arizona and Illinois. Jerry Erwin, founder of JEA Senior Living, has developed, owned and managed nursing homes, retirement facilities, assisted living and Alzheimer's special care centers for over 35 years.

After many years in the senior care industry, in 1994 upon witnessing his own mother's struggle with Alzheimer's, Mr. Erwin divested of his nursing and assisted living facilities to address the need for quality Alzheimer's care. JEA continues to enjoy a steady rate of growth due in large part to their unsurpassed quality in management and their unique building prototype.

We look forward to being a part of your community.