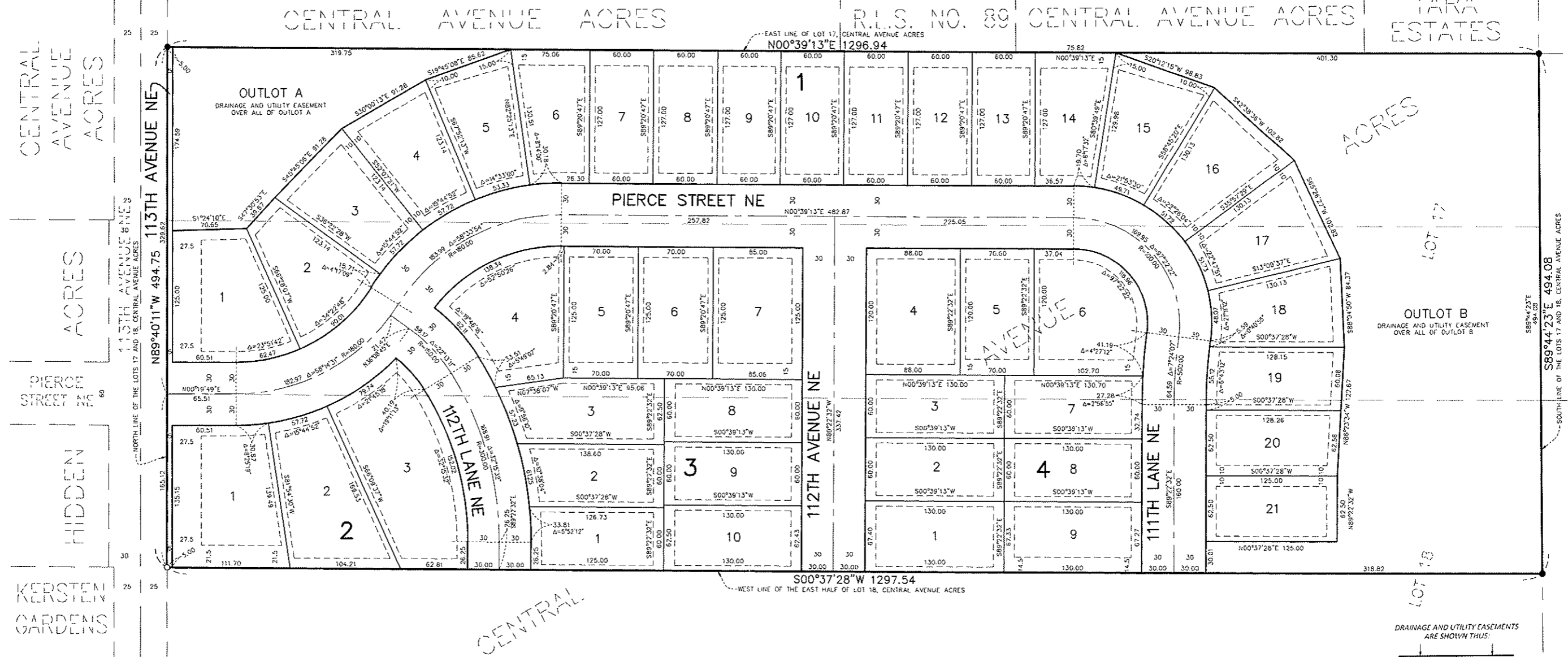


WICKLOW WOODS

CITY OF BLAINE
COUNTY OF ANOKA
SEC. 17, T. 31, R. 23



KNOW ALL PERSONS BY THESE PRESENTS: That U.S. Home Corporation, a Delaware corporation, owner of the following described property:

The West half (W 1/2) of Lot Seventeen (17) of Central Avenue Acres, according to the plat thereof on file and of record in the office of the Registrar of Titles of said Anoka County.

and

The East half (E 1/2) of Lot Eighteen (18) of Central Avenue Acres, according to the plat thereof on file and of record in the office of the Registrar of Titles of said Anoka County.

and

The East Half (E 1/2) of Lot Seventeen (17), Central Avenue Acres, according to the map or plat thereof on file and of record in the office of the Registrar of Titles, Anoka County, Minnesota

Has caused the same to be surveyed and platted as WICKLOW WOODS and does hereby dedicate to the public for public use the public ways and the drainage and utility easements as created on this plat.

In witness whereof said U.S. Home Corporation, a Delaware corporation, has caused these presents to be signed by its proper officer this _____ day of _____, 20____.

U.S. Home Corporation

By: _____
Jonathan A. Aune, Vice President

STATE OF _____
COUNTY OF _____

This instrument was acknowledged before me on _____ day of _____, 20____, by Jonathan A. Aune, the Vice President of U.S. Home Corporation, a Delaware corporation, on behalf of the corporation.

County, _____

My commission expires _____

I, Marcus F. Hampton do hereby certify that this plat was prepared by me or under my direct supervision; that I am a duly licensed Land Surveyor in the State of Minnesota; that this plat is a correct representation of the boundary survey; that all mathematical data and labels are correctly designated on this plat; that all monuments depicted on this plat have been, or will be correctly set within one year; that all water boundaries and wet lands, as defined in Minnesota Statutes, Section 505.01, Subd. 3, as of the date of this certificate are shown and labeled on this plat; and all public ways are shown and labeled on this plat.

Dated this _____ day of _____, 20____

Marcus F. Hampton, Licensed Land Surveyor, Minnesota License No. 47481

STATE OF MINNESOTA
COUNTY OF _____

This instrument was acknowledged before me on this _____ day of _____, 20____, by Marcus F. Hampton.

County, _____

My commission expires _____

CITY COUNCIL, CITY OF BLAINE, MINNESOTA

This plat of WICKLOW WOODS was approved and accepted by the City Council of the City of BLAINE, Minnesota at a regular meeting thereof held this _____ day of _____, 20____, and said plat is in compliance with the provisions of Minnesota Statutes, Section 505.03, Subd. 2.

By: _____ Clerk

ANOKA COUNTY SURVEYOR

I hereby certify that in accordance with Minnesota Statutes, Section 505.021, Subd. 11, this plat has been reviewed and approved this _____ day of _____, 20____.

Charles F. Gilzen, Anoka County Surveyor

ANOKA COUNTY AUDITOR/TREASURER

Pursuant to Minnesota Statutes, Section 505.021, Subd. 9, taxes payable in the year 20____ on the land hereinbefore described have been paid. Also, pursuant to Minnesota Statutes, Section 272.12, there are no delinquent taxes and transfer entered this _____ day of _____, 20____.

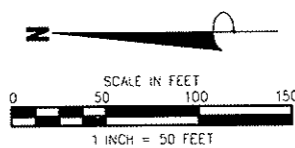
Property Tax Administrator
By: _____, Deputy

COUNTY RECORDER/REGISTRAR OF TITLES, COUNTY OF ANOKA, STATE OF MINNESOTA

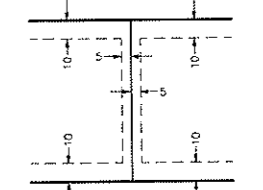
I hereby certify that this plat of WICKLOW WOODS was filed in the office of the County Recorder/Registrar of Titles for public record on this _____ day of _____, 20____, at _____ o'clock _____ M. and was duly recorded as Document Number _____.

County Recorder/Registrar of Titles

By: _____, Deputy



DRAINAGE AND UTILITY EASEMENTS ARE SHOWN THUS:



DRAINAGE AND UTILITY EASEMENTS BEING 5 FEET IN WIDTH, UNLESS OTHERWISE INDICATED, ADJOINING SIDE LOT LINES, AND BEING 10 FEET IN WIDTH, UNLESS OTHERWISE INDICATED, ADJOINING RIGHT OF WAY LINES AND REAR LOT LINES, AS SHOWN ON THE PLAT.

- DENOTES FOUND 1/2 INCH IRON MONUMENT WITH CAP MARKED R.L.S. NO. 44565
- DENOTES SET 1/2 INCH BY 14 INCH IRON MONUMENT WITH CAP MARKED R.L.S. NO. 47481

NOTE: NO MONUMENT SYMBOL SHOWN AT ANY STATUTE REQUIRED LOCATION INDICATES A PLAT MONUMENT THAT WILL BE SET WITHIN ONE YEAR FROM THE RECORDING DATE OF THIS PLAT. SAID MONUMENTS SHALL BE 1/2 INCH x 14 INCH IRON PIPES MARKED BY R.L.S. NO. 47481.

JAMES R. HILL, INC.