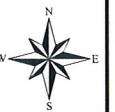
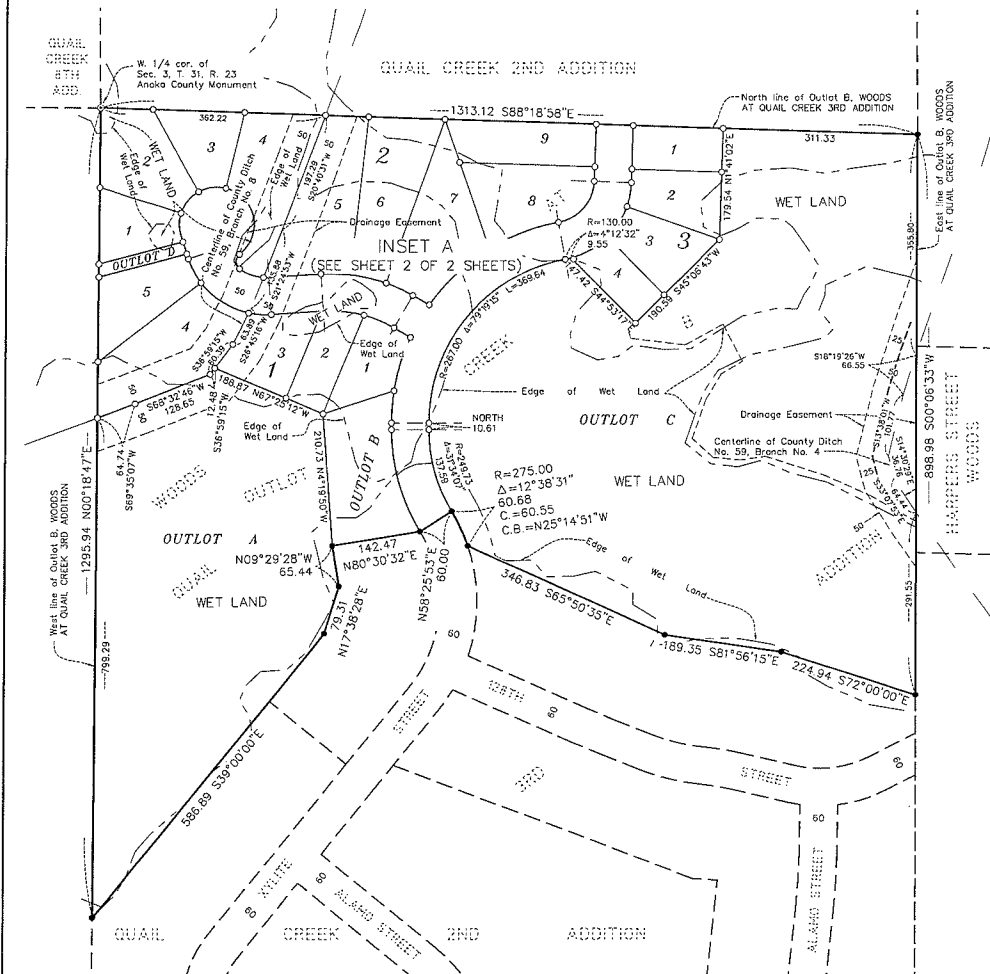


Case File No. 15-0058



WOODS AT QUAIL CREEK 4TH ADDITION

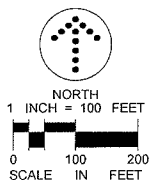
City of Blaine
County of Anoka
Sec. 3, T. 31, R. 23



● DENOTES 1/2 INCH BY 14 INCH IRON PIPE MONUMENT FOUND AND MARKED BY LICENSE NO. 14376.

○ DENOTES 1/2 INCH BY 14 INCH IRON PIPE MONUMENT SET AND MARKED BY LICENSE NO. 48176.

FOR THE PURPOSES OF THIS PLAT, THE NORTH LINE OF OUTLOT B, WOODS AT QUAIL CREEK 3RD ADDITION IS ASSUMED TO BEAR S88°18'58"E.



KNOW ALL PERSONS BY THESE PRESENTS: That MG Main Street Properties, LLP, a Minnesota limited liability partnership, owner of the following described property
Outlot B, WOODS AT QUAIL CREEK 3RD ADDITION, according to the record plat thereof.

Has caused the same to be surveyed and platted as WOODS AT QUAIL CREEK 4TH ADDITION and does hereby dedicate to the public for public use the public ways and the drainage and utility easements as created by this plat.

In witness whereof said MG Main Street Properties, LLP, a Minnesota limited liability partnership, has caused these presents to be signed by its proper partner this _____ day of _____, 20____.

MG MAIN STREET PROPERTIES, LLP

STATE OF MINNESOTA
COUNTY OF _____

This instrument was acknowledged before me this _____ day of _____, 20____ by _____ as _____ of MG Main Street Properties, LLP, a Minnesota limited liability partnership, on behalf of the partnership

Notary Public, Minnesota
My Commission Expires _____

I Eric B. Lindgren do hereby certify that this plat was prepared by me or under my direct supervision; that I am a duly Licensed Land Surveyor in the State of Minnesota; that this plat is a correct representation of the boundary survey, that all mathematical data and labels are correctly designated on this plat; that all monuments depicted on this plat have been, or will be correctly set within one year, that all water boundaries and wet lands, as defined in Minnesota Statutes, Section 505.01, Subd. 3, as of the date of this certificate are shown and labeled on this plat, and all public ways are shown and labeled on this plat.

Dated this _____ day of _____, 20____

Eric B. Lindgren, Licensed Land Surveyor
Minnesota License No. 48176

STATE OF MINNESOTA
COUNTY OF DAKOTA

This instrument was acknowledged before me this _____ day of _____, 20____ by Eric B. Lindgren.

Notary Public, Minnesota
My Commission Expires _____

CITY COUNCIL, CITY OF BLAINE, MINNESOTA

This plat of WOODS AT QUAIL CREEK 4TH ADDITION was approved and accepted by the City Council of the City of Blaine, Minnesota at a regular meeting thereof held this _____ day of _____, 20____ and said plat is in compliance with the provisions of Minnesota Statutes, Section 505.03, Subd. 2.

CITY COUNCIL, CITY OF BLAINE, MINNESOTA
By: _____ Mayor
By: _____ Clerk

ANOKA COUNTY SURVEYOR

I hereby certify that in accordance with Minnesota Statutes, Section 505.021, Subd. 11, this plat has been reviewed and approved this _____ day of _____, 20____

By: _____
Larry D. Heilm
Anoka County Surveyor



WOODS AT QUAIL CREEK 4TH ADDITION

City of Blaine
County of Anoka
Sec. 3, T. 31, R. 23

