

**Case File No. 18-0035**  
**Ryan and Julie Comer**

Blaine Planning Department / 10801 Town Square Dr NE / Blaine, MN 55449 / (763) 785-6180



# PIONEER engineering

Coon Rapids Office  
201 85th Avenue N.W.  
Coon Rapids, MN 55433  
(763) 783-1880 Fax:783-1883

CIVIL ENGINEERS LAND PLANNERS LAND SURVEYORS LANDSCAPE ARCHITECTS

Mendota Heights Office  
2422 Enterprise Drive  
Mendota Heights, MN 55120  
(651)681-1914 Fax:681-9488

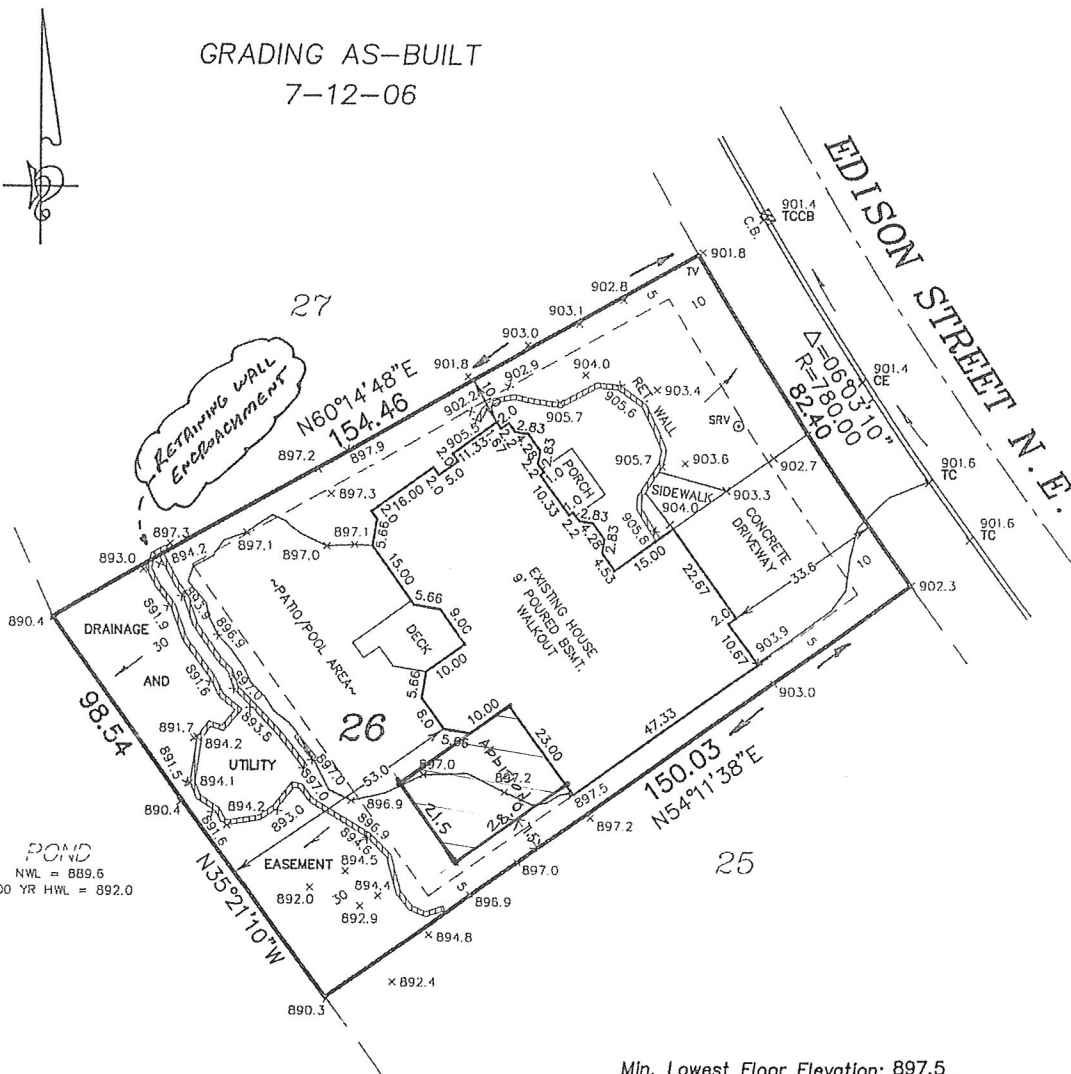
Coon Rapids Office

Certificate of Survey for: TJB HOMES, INC

House Address: 11540 Edison Street N.E.

GRADING AS-BUILT

7-12-06



Min. Lowest Floor Elevation: 897.5

EXISTING BUILDING ELEVATIONS

Lowest Floor Elevation: 897.6

Top of Foundation Elevation: 906.6

Garage Slab Elevation: 904.0 (at door)

NOTE: Consistent with the Lake Management Plan, lake shore grading and vegetation is controlled by homeowners association. Builder shall not disturb any grading or vegetation in rear yard easement.

NOTE: Proposed building site grading is in accordance with the grading plans approved by the city engineer.

NOTE: Contractor must verify all dimensions & driveway design.

NOTE: Driveways are shown for graphic purposes only, final driveway design and location will be determined by contractor.

E.O.F. 000.0 Denotes Emergency Overflow

x 000.0 Denotes Existing Elevation

x (000.0) Denotes Proposed Elevation

→ Denotes Drainage Flow Direction

== Denotes Drainage & Utility Easement (per recorded plat)

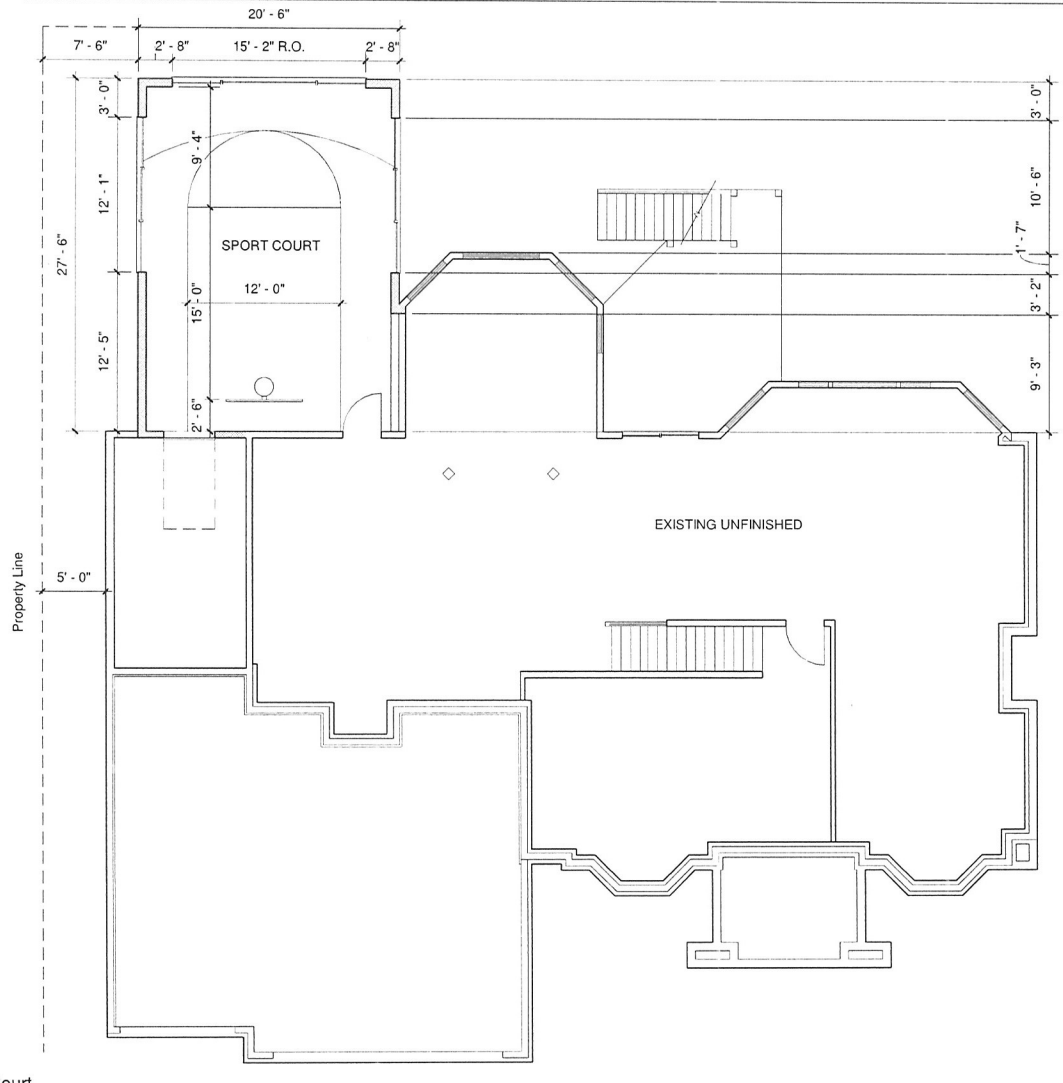
—○— Denotes Offset Iron Bearings shown are assumed

LOT 26, BLOCK 2, THE LAKES OF RADISSON TWELFTH ADD.

ANOKA COUNTY, MINNESOTA

I hereby certify to TJB HOMES, INC. that this survey, plan or report was prepared by me or under my direct supervision and that I am a duly licensed Land Surveyor under the laws of the State of Minnesota. Dated this 29th day of April A.D., 2005.

Scale: 1 inch = 30 feet



① Sport Court  
1/8" = 1'-0"



Kurt Baum & Associates, Architects  
 5100 Edina Industrial Blvd Suite # 201  
 Edina, MN 55439  
 952.426.1932  
 www.kurtbaumassociates.com

## COMER RESIDENCE

11546 Edison Street NE  
Blaine, MN

Project Architect	KB
Drawn by	NM
Checked by	KB
Date	5.10.18

## Sport Court Plan A101

Scale 1/8" = 1'-0"



① South Elevation  
1/8" = 1'-0"



Kurt Baum & Associates, Architects

5100 Edina Industrial Blvd Suite # 201  
Edina, MN 55439  
952.426.1932  
www.kurtbaumassociates.com

## COMER RESIDENCE

11546 Edison Street NE  
Blaine, MN

Project Architect	KB
Drawn by	NM
Checked by	KB
Date	5.10.18

South  
Elevation  
A201

Scale 1/8" = 1'-0"



① West Elevation  
1/8" = 1'-0"



Kurt Baum & Associates, Architects

5100 Edina Industrial Blvd Suite # 201  
Edina, MN 55439  
952.426.1932  
www.kurtbaumassociates.com

## COMER RESIDENCE

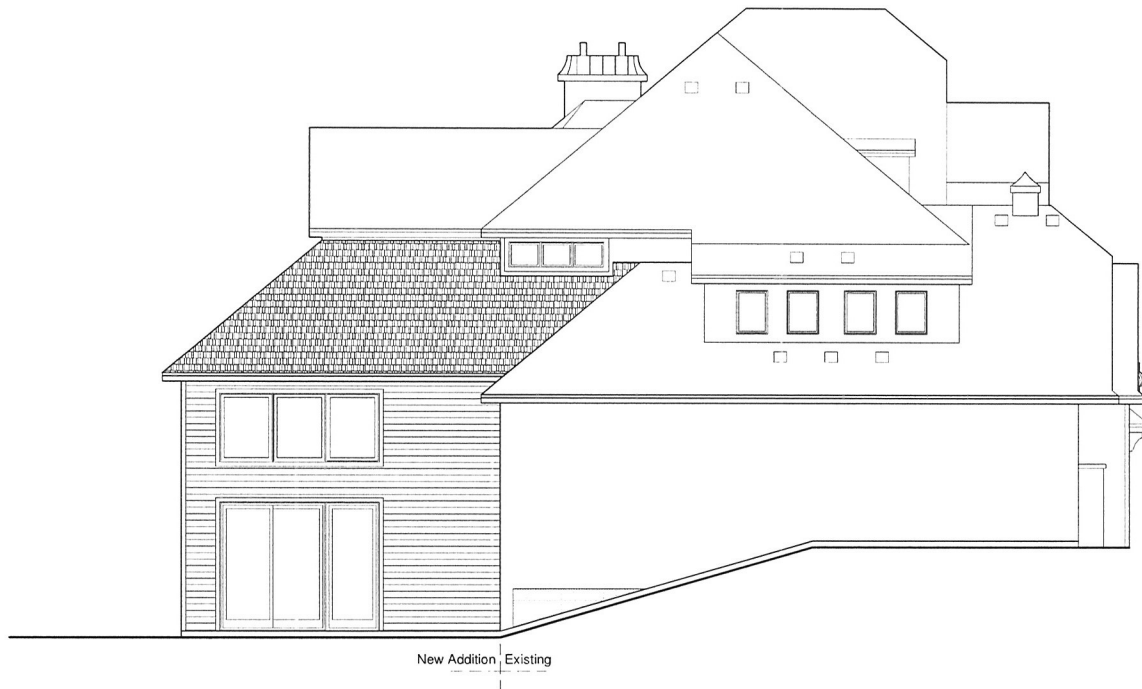
11546 Edison Street NE  
Blaine, MN

Project Architect	KB
Drawn by	NM
Checked by	KB
Date	5.10.18

West Elevation

## A202

Scale 1/8" = 1'-0"



① North Elevation  
1/8" = 1'-0"



Kurt Baum & Associates, Architects  
 5100 Edina Industrial Blvd Suite # 201  
 Edina, MN 55439  
 952.426.1932  
 www.kurtbaumassociates.com

## COMER RESIDENCE

11546 Edison Street NE  
Blaine, MN

Project Architect	KB
Drawn by	NM
Checked by	KN
Date	5.10.18

## North Elevation A203

Scale 1/8" = 1'-0"