

The logo for Wold, featuring the word "Wold" in white text on an orange, irregularly shaped background.A black and white photograph of a modern, multi-level interior space, likely a city hall or police station. The space features a polished floor with a large, abstract circular pattern. There are several levels with glass railings, and a central area with a sofa and large windows. The lighting is bright and even.

# CITY OF BLAINE

City Hall and Police Renovation  
City Work Session  
August 5, 2019



1. Develop a solution that will support and be flexible to accommodate the Community and City's **needs for the next 20 years**.
2. Provide a **welcoming and friendly** customer experience.
3. Create a **safe and secure environment** for public and staff, by maintaining a professional but private staff setting.
4. Provide more creative and **collaborative and flex spaces** for departments to meet and work together.
5. There should be equity and uniformity among departments. **Space standardization** should occur for new spaces being designed.
6. The City should be **fiscally responsible** while developing a long term solution.
7. Maximize **daylighting and views** to the exterior for all staff.

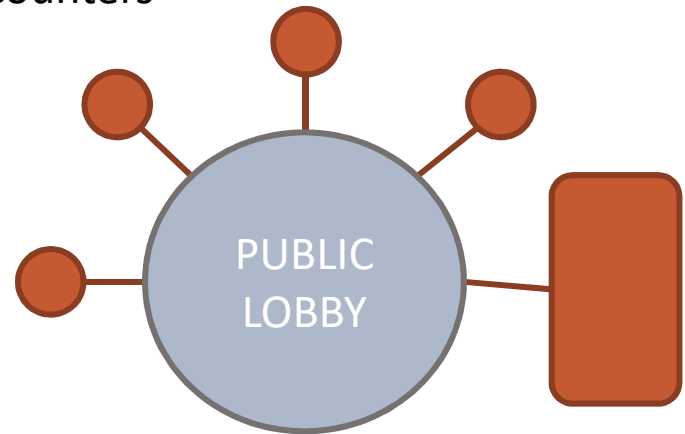


Organizational Concepts

Primary counter with secondary counters



Department  
Counters



Primary  
Counter



**Offices:**

City Manager/Chief of Police	180 SF
Meets with 6-8 people in Office	
Has private conversations	
Department Head	140 SF
Meets with 3 people in office	
Has private conversations	
Manager	120 SF
Meets with 2 people in office	
Has private conversations	
Supervisor	100 SF
Meets with 1 person in office	
Has private conversations	



**Workstations:**

Workstation A	64 SF
Full Time Employee	
In office over 50% of the day	
Typical Personal Storage	
Workstation B	48 SF
Part Time Employee	
In office less than 50% of the day	
Minimal Personal Storage	
Workstation C	25 SF
Landing Pad/Shared Station	
In office less than 25% of the day	



**Conference Rooms:**

6 Person Conference Room Technology Tower	140 SF
8 Person Conference Room Technology Tower	160 SF
12 Person Conference Room Technology Tower	200 SF
16 Person Conference Room Technology Tower Hospitality Counter	300 SF



**Collaboration Spaces:**

Booth	70 SF
Seats 4 People	
Island	80 SF
Seats 6 People	
Table & Chairs	70 SF
Seats 4 People	
Privacy Lounge Chair	36 SF
Seats 1 Person	
Banquet	
Seats 4-5 People	50 SF



CITY OF BLAINE  
Space Summary

Department	Existing	Schematic Design
City Hall Public Areas	8,388 USF	8,542 USF
Administration	1,116 USF	1,582 USF
City Clerk	484 USF	669 USF
Human Resources	792 USF	932 USF
Communications	280 USF	529 USF
Customer Services Center	260 USF	752 USF
Finance	1,608 USF	2,209 USF
Information Technology	990 USF	1,509 USF
Parks and Recreation	1,505 USF	2,010 USF
Geographic Information Systems	210 USF	778 USF
Engineering	3,133 USF	2,808 USF
Planning & Community Development	1,092 USF	1,249 USF
Building Inspections	2,274 USF	2,709 USF
Community Standards	2,004 USF	2,506 USF



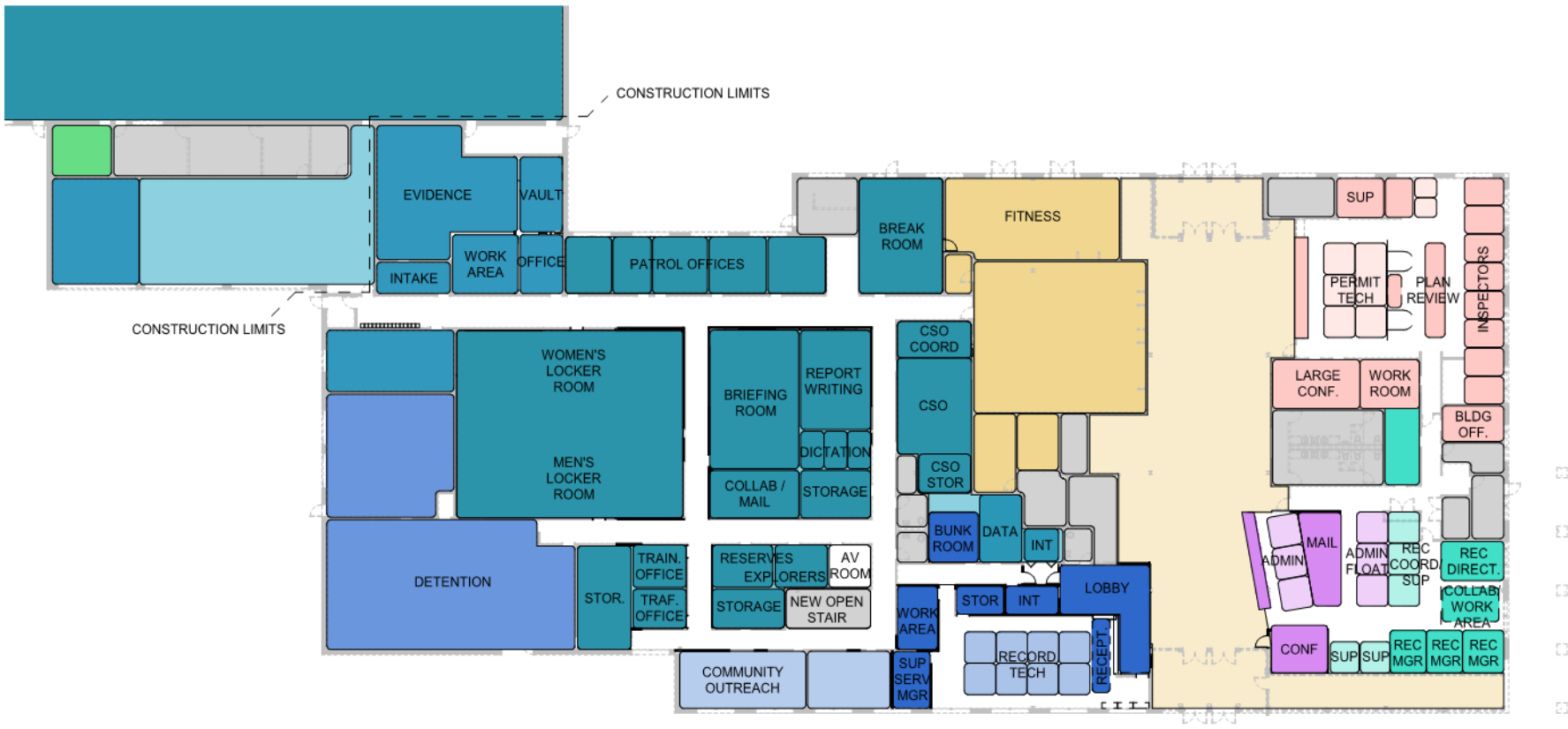


CITY OF BLAINE  
Space Summary

Department	Existing	Schematic Design
Police - Command Staff	1,668 USF	1,960 USF
Police - Investigations	3,355 USF	4,095 USF
Police – Patrol	3,252 USF	3,721 USF
Police – Evidence	1,540 USF	2,839 USF
Police – Support Services	1,176 USF	1,730 USF
Police – Community Outreach	605 USF	770 USF
Police – Community Services Officers	418 USF	532 USF
Police - Detention	2,980 USF	2,980 USF
Police – Staff Support Spaces	2,736 USF	3,674 USF
Police – Garage/ Maintenance	1,505 USF	2,010 USF



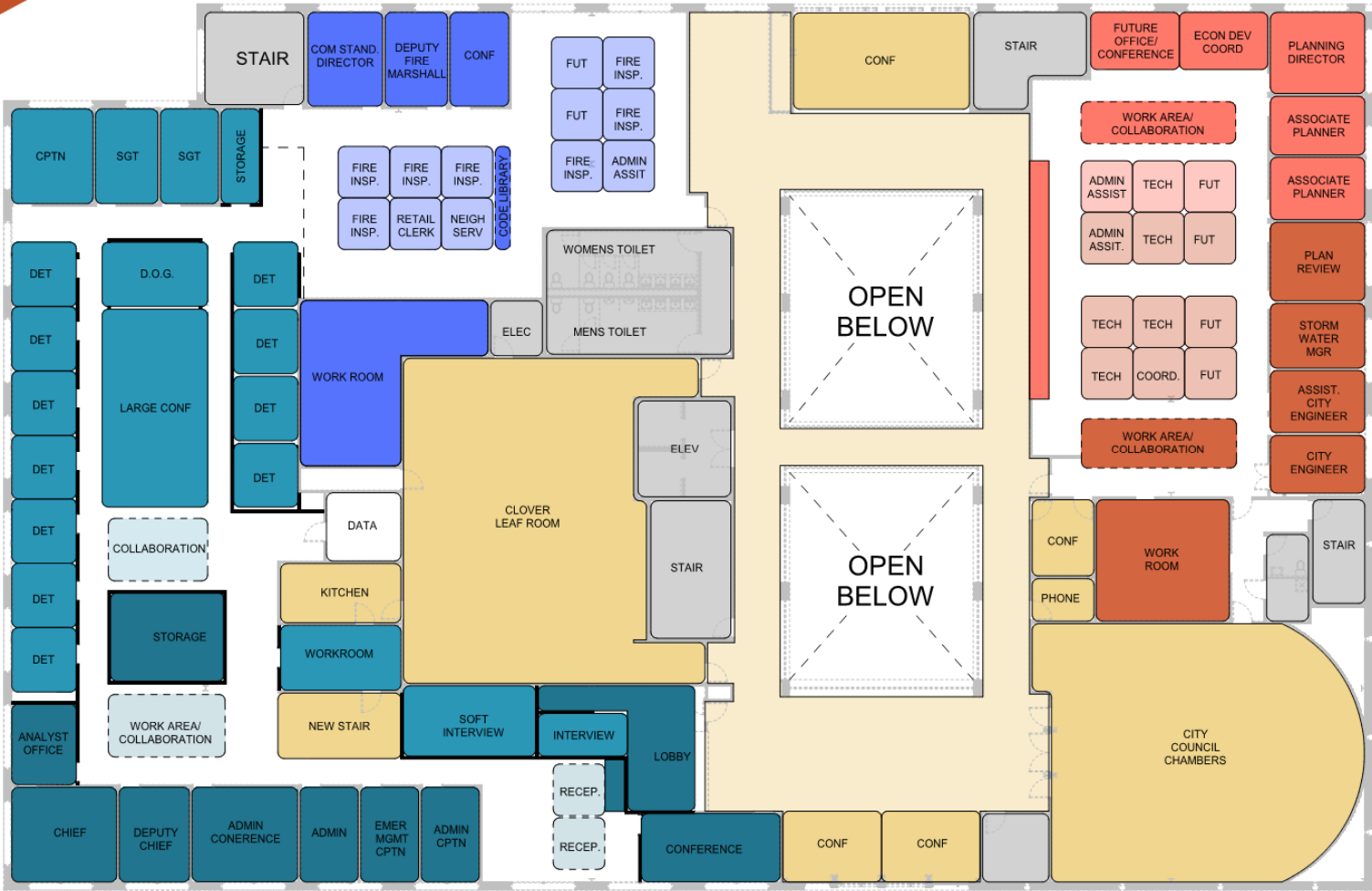
Proposed Bubble Diagrams



LEVEL 1 OVERALL



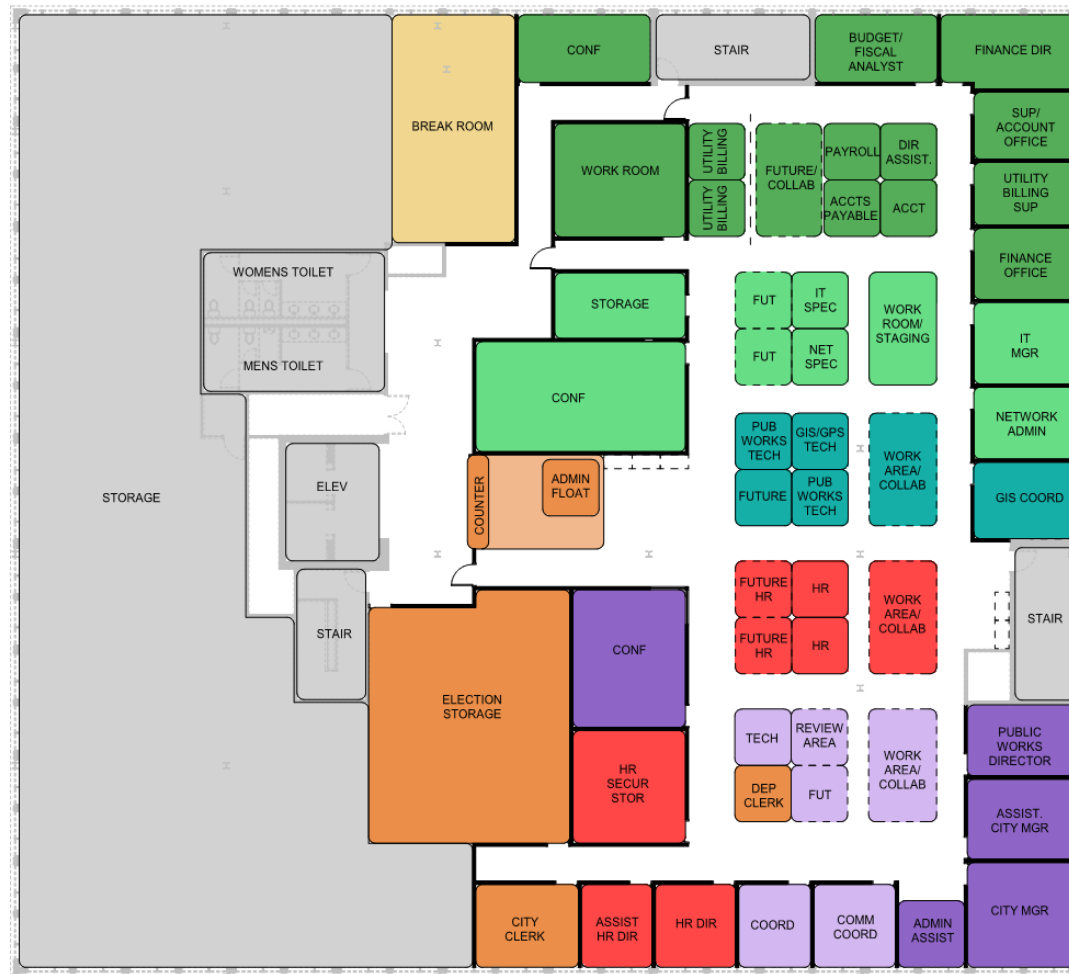
Proposed Bubble Diagrams



LEVEL 2 OVERALL



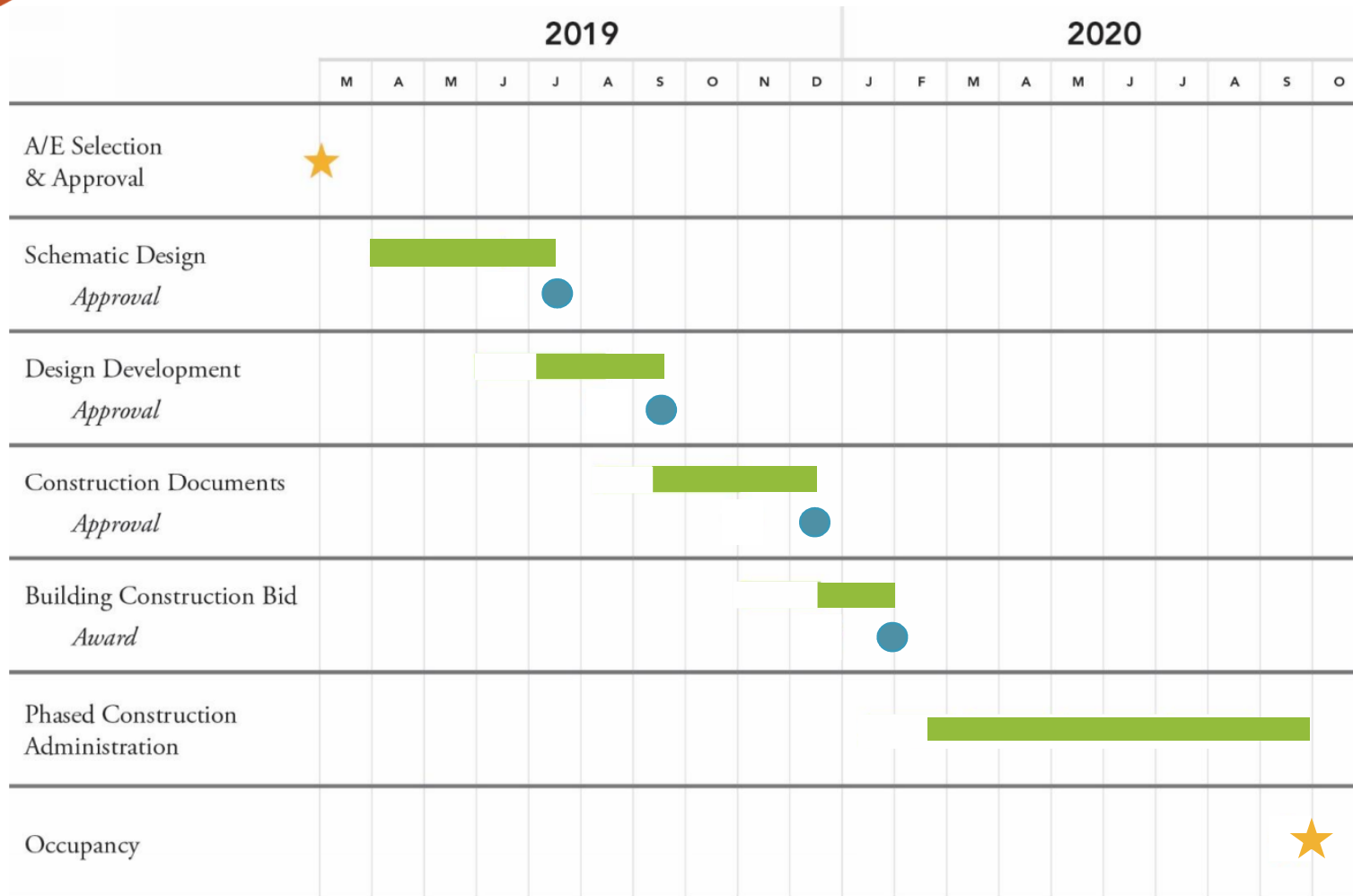
# Proposed Bubble Diagrams



LEVEL 3 OVERALL



# CITY OF BLAINE Project Schedule





CITY OF BLAINE



Questions?