



Twin Cities



TPC Twin Cities

Overview of Proposed Modifications for
PGA TOUR event



Practice Area

- Reroute cart path around putting and chipping greens to improve safety and traffic flow.
- Expand putting and chipping greens.

Course Improvements

- 15 of 18 holes
- Minimal disruption
- High Impact on playability

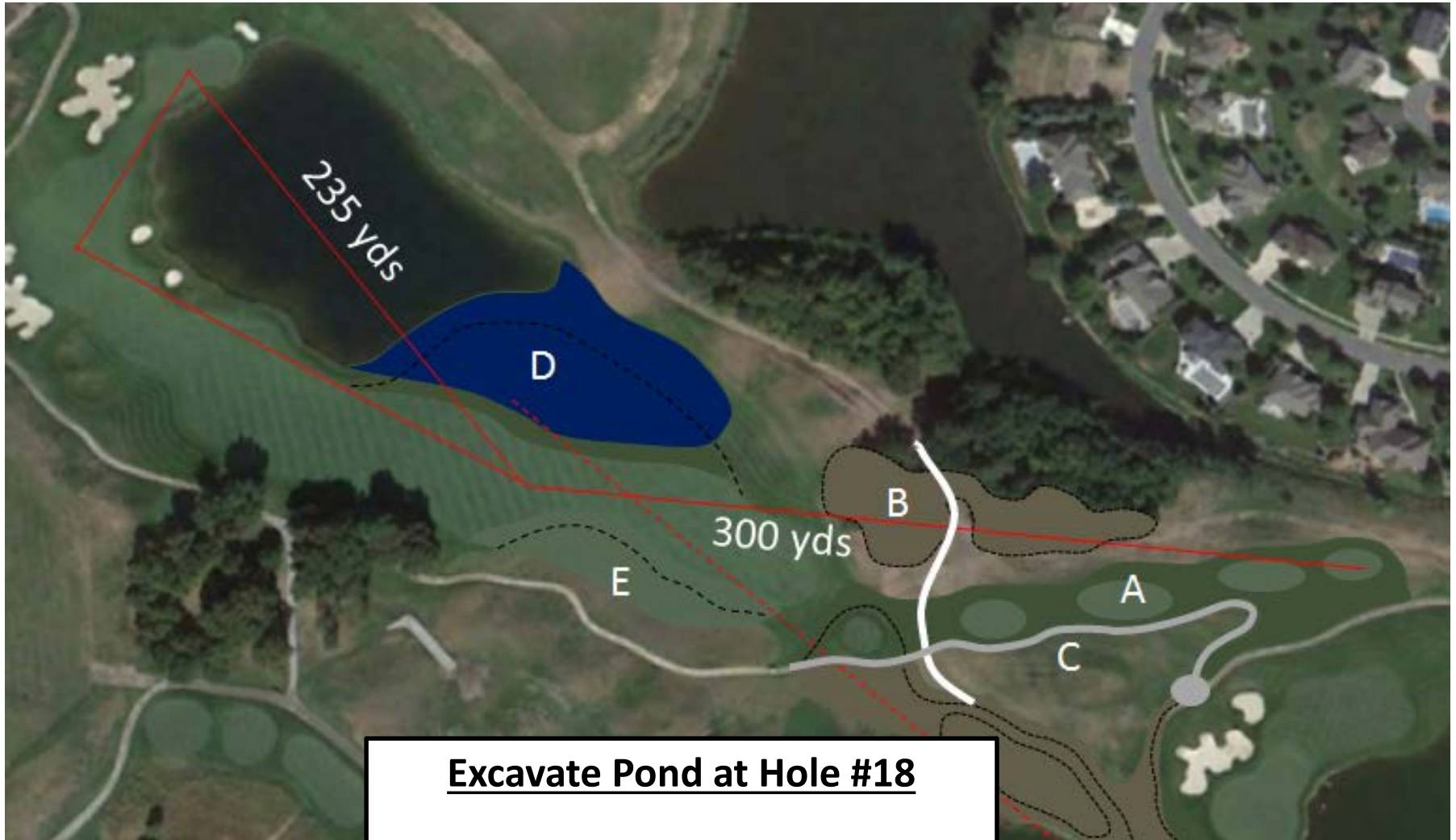
Course Improvements

- Narrowing fairways by removing fairway sod and replacing with rough sod.
- Installing nearly 100 mature (20ft-30ft) trees

Course Improvements

- Modifying bunker locations and sizes
- Adding new 'professional' tees to lengthen the course
- Grading to improve spectator viewing experience and safety





Excavate Pond at Hole #18

- Utilizing material on-site
- Should eliminate need to truck any material in



Regrade Driving Range

- Reshape practice area floor to remove all excess ridges
- Create gravel cap road for support vehicle parking



TPC Twin Cities

A

B

VIP Parking & Hospitality Area

- Regrade for safety and site stability

Summary

- On site grading of nearly 100,000 CY
- Will meet all Watershed District requirements
- Improved spectator experience
- Lengthen course to: **7432 yards par 71**

TPC Twin Cities



Twin Cities

