

Case File No. 14-0062



COUNTY STATE AID HIGHWAY NO. 10

SITE PLAN DESIGN NOTES & KEY PLAN

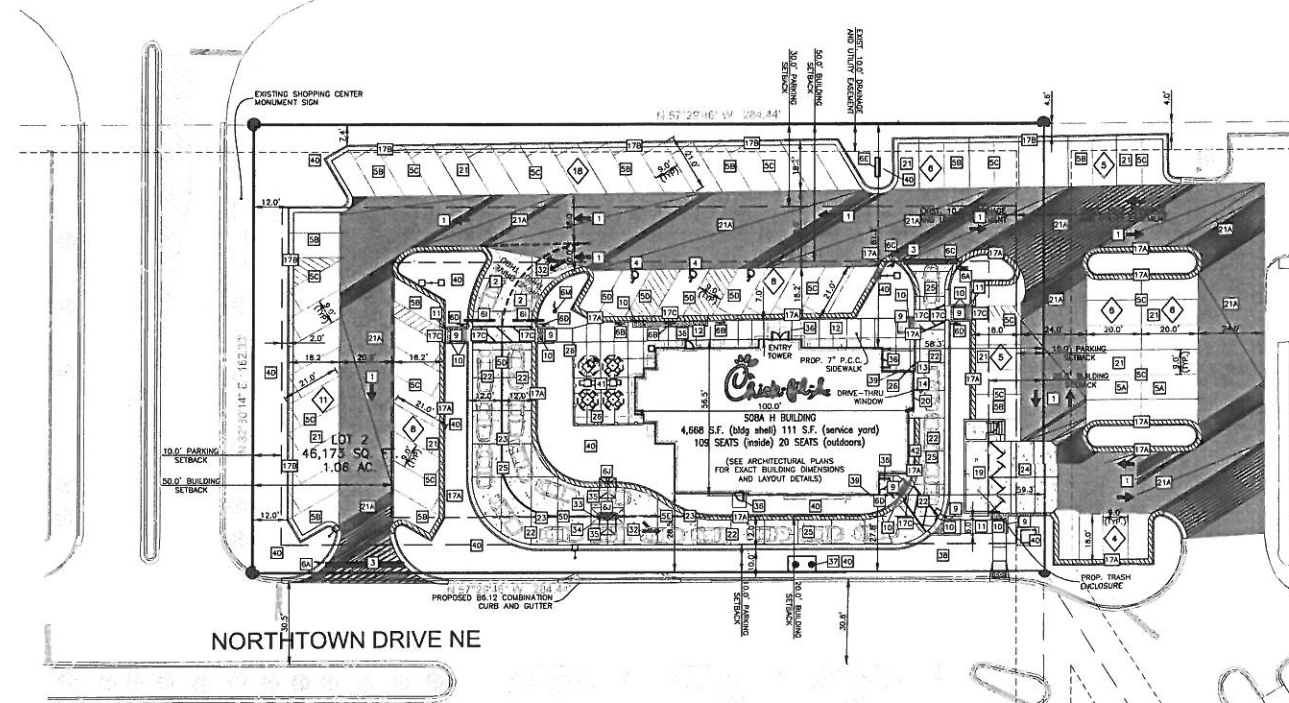
- 1 DIRECTIONAL ARROW
- 2 DRIVE-THRU GRAPHICS
- 3 STOP LINE GRAPHIC
- 4 PAINTED HANDICAP PARKING SYMBOL
- 5 STANDARD PARKING STALL (9'x20') PER CODE
- 6 STANDARD PARKING STALL (9'x18') OR (9'x21') W/ OVERHANG
- 7 4" SOLID WHITE STRIPING
- 8 4" SOLID YELLOW STRIPING
- 9 4" SKIP DASH YELLOW STRIPING
- 10 DIRECTIONAL SIGNAGE

ALL SIGNS SHALL CONFORM TO THE "MANUAL ON UNIFORM TRAFFIC CONTROL DEVICES" BY THE U.S. DEPARTMENT OF TRANSPORTATION. (SEE SIGN LEGEND)

- 11 DENOTES "STOP" R1-1, 30" X 30" (TYP.)
- 12 DENOTES "HANDICAPPED PARKING" (SIGNS MOUNTED) R7-8, 12" X 18" (TYP.)
- 13 DENOTES "2500 FINE" R7-101, 8" X 12" (TYP.)
- 14 DENOTES "DO NOT ENTER" R5-1, 30" X 30" (TYP.)
- 15 DENOTES "PEDESTRIAN CROSSWALK" 22" X 18"

- 16 CHECK-FL-A MONUMENT SIGN, SEE SIGNAGE PACKAGE
- 17 CLEARANCE BAR, SEE SIGNAGE PACKAGE
- 18 CANDY ORDERING STATION, SEE SIGNAGE PACKAGE
- 19
- 20
- 21
- 22
- 23
- 24
- 25
- 26
- 27
- 28
- 29
- 30
- 31
- 32
- 33
- 34
- 35
- 36
- 37
- 38
- 39
- 40
- 41
- 42
- 43
- 44
- 45
- 46
- 47
- 48
- 49
- 50
- 51
- 52
- 53
- 54
- 55
- 56
- 57
- 58
- 59
- 60
- 61
- 62
- 63
- 64
- 65
- 66
- 67
- 68
- 69
- 70
- 71
- 72
- 73
- 74
- 75
- 76
- 77
- 78
- 79
- 80
- 81
- 82
- 83
- 84
- 85
- 86
- 87
- 88
- 89
- 90
- 91
- 92
- 93
- 94
- 95
- 96
- 97
- 98
- 99
- 100

- 101
- 102
- 103
- 104
- 105
- 106
- 107
- 108
- 109
- 110
- 111
- 112
- 113
- 114
- 115
- 116
- 117
- 118
- 119
- 120
- 121
- 122
- 123
- 124
- 125
- 126
- 127
- 128
- 129
- 130
- 131
- 132
- 133
- 134
- 135
- 136
- 137
- 138
- 139
- 140
- 141
- 142
- 143
- 144
- 145
- 146
- 147
- 148
- 149
- 150
- 151
- 152
- 153
- 154
- 155
- 156
- 157
- 158
- 159
- 160
- 161
- 162
- 163
- 164
- 165
- 166
- 167
- 168
- 169
- 170
- 171
- 172
- 173
- 174
- 175
- 176
- 177
- 178
- 179
- 180
- 181
- 182
- 183
- 184
- 185
- 186
- 187
- 188
- 189
- 190
- 191
- 192
- 193
- 194
- 195
- 196
- 197
- 198
- 199
- 200



SITE DATA:	
LOT SIZE:	46,173± SQ. FT. (1.060 AC.)
BUILDING AREA:	
BUILDING FOOT PRINT:	4,668± SQ. FT.
FLOOR AREA RATIO (F.A.R.):	= 0.101
CHICK-FIL-A PARKING DATA:	
NUMBER OF REGULAR PARKING STALLS:	74
NUMBER OF ADA STALLS:	3
TOTAL NUMBER OF STALLS PROVIDED:	77
55	ONSITE
21	OFFSITE
TOTAL NUMBER OF STALL PROVIDED:	47
TYPICAL PARKING WIDTH:	9.0'
TYPICAL PARKING LENGTH:	20.0'/18.0' WITH VEHICLE OVERHANG
TYPICAL ISLE WIDTH:	24.0'
PARKING FORMULA:	
1 SPACE PER 100 SQ. FT. OF FLOOR AREA	
EXTENDED PARKING DATA:	
REQUIRED FOR RESTAURANT USE:	
CHICK-FIL-A = 47 STALLS (BLDG. 4,668 SQ. FT.)	
PARKING CHIPPOLTE = 18 STALLS (BLDG. 1,837 SQ. FT.)	
PARKING POTBELLS = 24 STALLS (BLDG. 2,355 SQ. FT.)	
PARKING FORMULA:	1 SPACE PER 100 SQ. FT. OF FLOOR AREA
REQUIRED RETAIL USE:	
VERIZON/GAME STOP/FEDEX = 28 STALLS (BLDG. 5,808 SQ. FT.)	
PARKING FORMULA:	1 SPACE PER 200 SQ. FT. OF FLOOR AREA
TOTAL COMBINED STALLS:	
REQUIRED = 118	
PROVIDED = 78	
SURPLUS = 10	

**PROJECT NOTES:**

- ALL CONSTRUCTION WITHIN PUBLIC R.O.W./ EASEMENTS AND OR CONNECTION TO PUBLIC SEWERS AND STREETS SHALL COMPLY WITH THE CITY OF BLAINE STANDARD CONSTRUCTION SPECIFICATIONS FOR SUBDIVISIONS.
- AT LEAST ONE WEEK PRIOR TO ANY CONSTRUCTION WITHIN PUBLIC R.O.W./ EASEMENTS AND/OR ANY CONNECTION TO PUBLIC SEWERS AND STREETS, THE CONTRACTOR SHALL CONTACT THE CITY TO OBTAIN APPLICABLE CITY PERMITS.
- INGRESS/EGRESS WILL BE PROVIDED INTERNAL AND EXTERNAL TO THIS SITE.
- ALL CONCRETE CURB & GUTTER ON LOT 2 SHALL BE 24" UNLESS OTHERWISE NOTED ON THE PLANS.
- ALL PAVEMENT DIMENSIONS ARE MEASURED TO THE FACE OF CURB UNLESS OTHERWISE NOTED.
- ALL PAVEMENT RADI ARE MEASURED TO THE FACE OF CURB UNLESS OTHERWISE NOTED.
- ALL CURB ADJOINING SIDEWALKS SHALL BE DOWNELD INTO THE CURB. SEE DETAIL ON SHEET C-4-D

**HATCH LEGEND**

[Hatch Pattern]	DENOTES AREA TO UTILIZE TRIANGULATED DOMES
[Hatch Pattern]	DENOTES STANDARD PAVEMENT SECTION
[Hatch Pattern]	DENOTES CONCRETE SECTION
[Hatch Pattern]	DENOTES HEAVY DUTY PAVEMENT SECTION
[Hatch Pattern]	DENOTES PROP. SIDEWALK
[Hatch Pattern]	DENOTES AREA OF DEPRESSED SIDEWALK
[Hatch Pattern]	DENOTES AREA OF DEPRESSED CURB AND GUTTER WITH LENGTH NOTED ON PLANS
[Hatch Pattern]	DENOTES REVERSE CURB & GUTTER



PRELIMINARY NOT FOR CONSTRUCTION

5200 Buffington Rd.  
Atlanta Georgia,  
30349-2998

---

HRGreen.com

---

STORE #3534  
NORTH TOWN MALL  
SU 508A

398 NORTH TOWN DRIVE, BLAINE, MN. 55434

SHEET TITLE  
SITE PLAN

DWG. EDITION PRELIM. REVISION

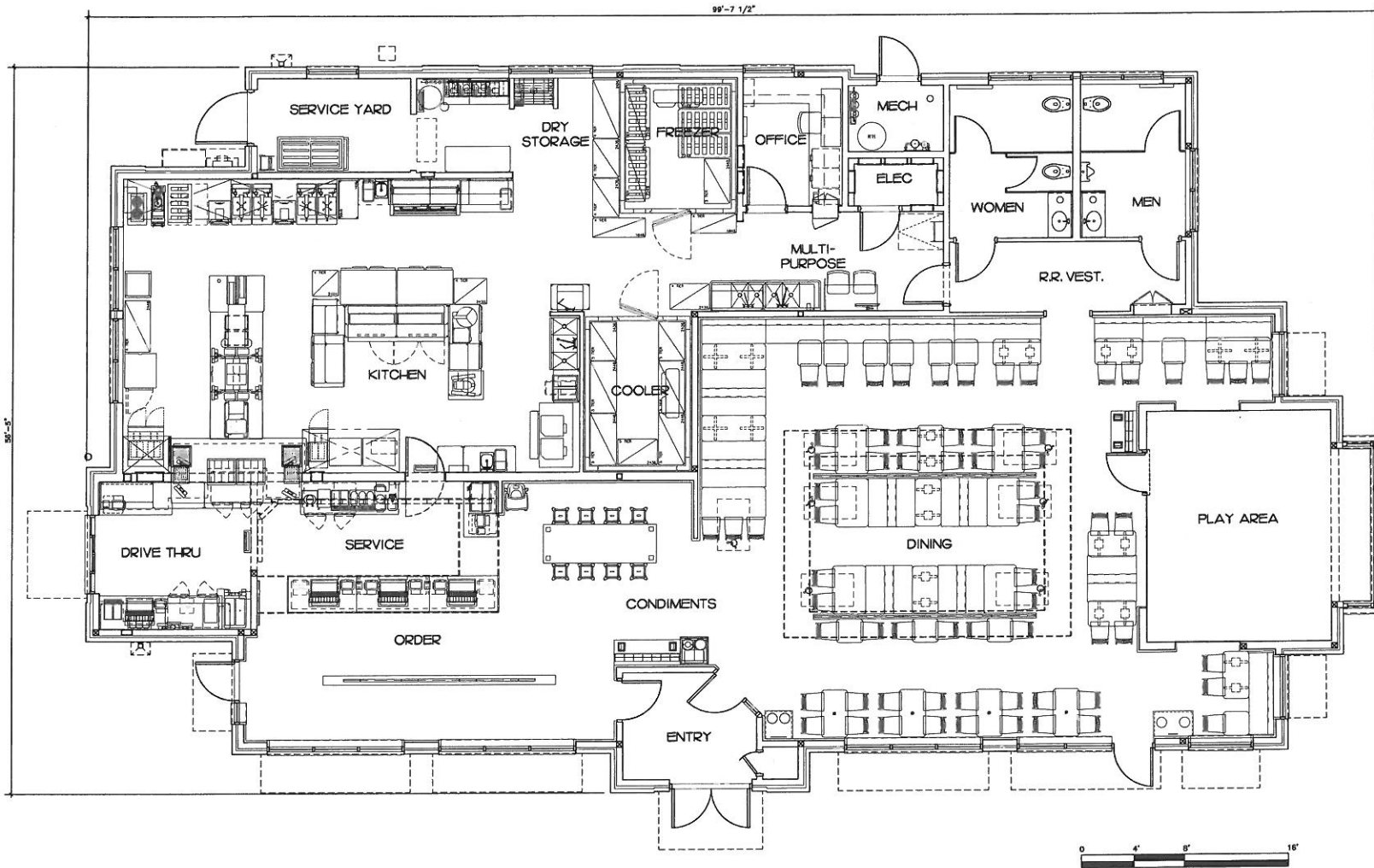
Job No. : 86140126  
Store : #3534  
Date : 09/26/14  
Drawn By : MRJ  
Checked By : JEV

Sheet  
C-2.0









10/07/2014

Blaine FSU, Blaine, MN - Store #03534

## Floor Plan





10/07/2014

Blaine FSU, Blaine, MN - Store #03534

## Elevations

See Finish Schedule for more information







10/07/2014

Blaine FSU, Blaine, MN - Store #03534

## Elevations

See Finish Schedule for more information

