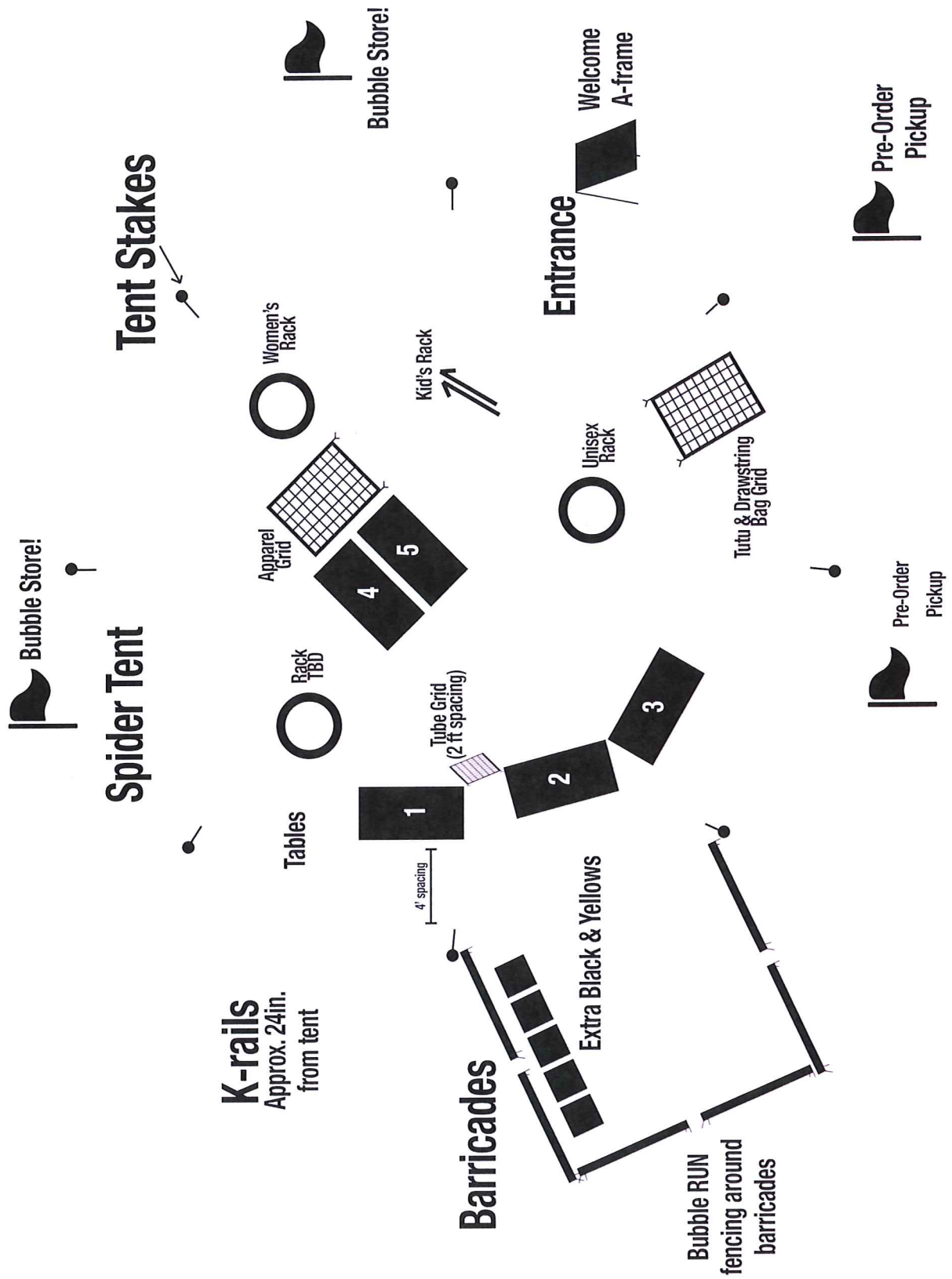


Store Schematic (Plan B, internal)

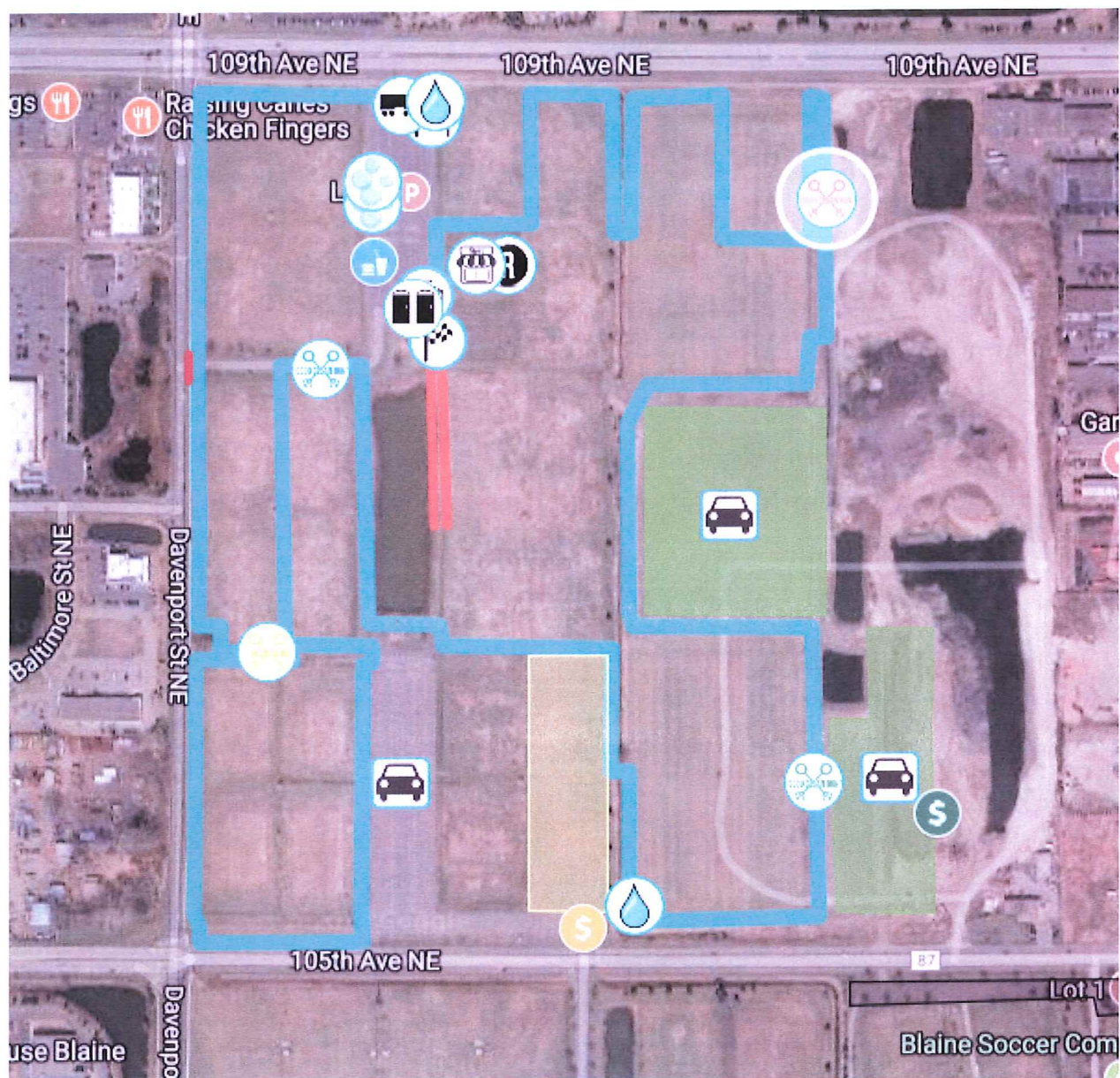


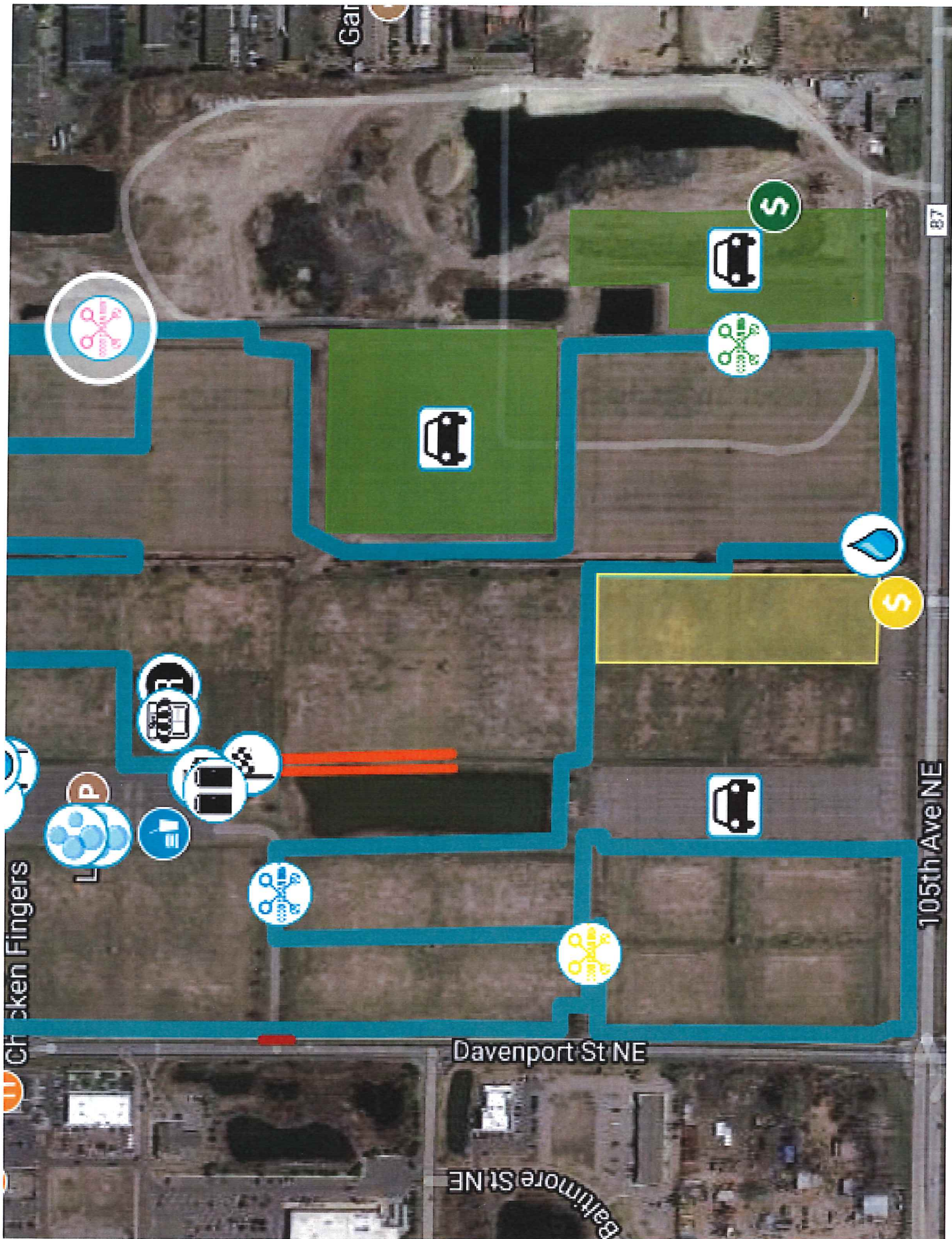
Parking Plan – Bubble Run 2018



1. Attendees will form two lanes and will be directed towards the rear of LOT G. We will have multiple sellers for each lane. Sellers will be cash or credit card only and will give tickets to show an attendee has paid.
2. LOT G will be filled from south end to north end. We will have employees directing traffic to form organized lanes. Sellers and traffic directors will move with traffic as we fill the lot.
3. Lot F closed unless needed for overflow. Barricades will be used to ensure LOT F is not used yet or accessed from 105th Ave. Cars will be directed to exit from this part of the lot back to 109th Ave (Right Turn Only).
4. We will have an established point where lot F will open if overflow parking is needed. We do not expect this due to space turnover from previous races. Lot F would be filled similarly to Lot G.
5. Per City of Blaine information, Lot D south entrance may be moved further to the West. Cars will enter through this entrance and Fields I4 and I2 will be filled from North to South.
6. Lot D will be filled if I2 and I4 lots are full. Lot D is paved and striped so traffic control will not be necessary.
7. To ease 105th Ave congestion, an exit lane will be created, cars will exit to the West of Lot D onto Davenport Rd (Right Turn Only). Exit signs will be posted.
8. Main Parking Lot East and Super Rink Lot North access will be closed to begin event. If/When we need to open for overflow parking, Attendants and traffic control will move from full lots to open MPLE and SRLN.

**The red X's show lot entrances not available to Bubble Run patrons **





Gar

87

Chicken Fingers

Davenport St NE

Baltimore St NE

105th Ave NE