

Case File No. 15-0068

Blaine Planning Department / 10801 Town Square Dr NE / Blaine, MN 55449 / (763) 785-6180



WOODLAND VILLAGE 11TH ADDITION

CITY OF BLAINE
COUNTY OF ANOKA
SEC. 12, TWP. 31, RNG. 23

KNOW ALL PERSONS BY THESE PRESENTS: That Village Bank, a Minnesota corporation, owner, and Woodland Development Corporation, a Minnesota corporation, contract purchaser of the following described property:

Outlot A, WOODLAND VILLAGE 10TH ADDITION, according to the recorded plat thereof, Anoka County, Minnesota
Have caused the same to be surveyed and platted as WOODLAND VILLAGE 11TH ADDITION and do hereby dedicate to the public for public use the drainage and utility easements as shown on this plat.

In witness whereof said Village Bank, a Minnesota corporation, has caused these presents to be signed by its proper officer this ____ day of _____, 20____.

VILLAGE BANK

Randy L. Diers, President

STATE OF _____
COUNTY OF _____

This instrument was acknowledged before me on _____ by Randy L. Diers, President of Village Bank, a Minnesota corporation, on behalf of the corporation.

Notary Public,
My commission expires _____

In witness whereof said Woodland Development Corporation, a Minnesota corporation, has caused these presents to be signed by its proper officer this ____ day of _____, 20____.

WOODLAND DEVELOPMENT CORPORATION

Byron D. Westlund, President

STATE OF _____
COUNTY OF _____

This instrument was acknowledged before me on _____ by Byron D. Westlund, President of Woodland Development Corporation, a Minnesota corporation, on behalf of the corporation.

Notary Public,
My commission expires _____

I Thomas R. Balluff do hereby certify that this plat was prepared by me or under my direct supervision; that I am a duly Licensed Land Surveyor in the State of Minnesota; that this plat is a correct representation of the boundary survey; that all mathematical data and labels are correctly designated on this plat; that all monuments depicted on this plat have been, or will be correctly set within one year; that all water boundaries and wet lands, as defined in Minnesota Statutes, Section 505.01, Subd. 3, as of the date of this certificate are shown and labeled on this plat; and all public ways are shown and labeled on this plat.

Dated this ____ day of _____, 20____.

Thomas R. Balluff, Licensed Land Surveyor
Minnesota License No. 40361

STATE OF _____
COUNTY OF _____

This instrument was acknowledged before me on _____ by Thomas R. Balluff.

Notary Public,
My commission expires _____

CITY COUNCIL, CITY OF BLAINE, MINNESOTA

This plat of WOODLAND VILLAGE 11TH ADDITION was approved and accepted by the City Council of the City of Blaine, Minnesota at a regular meeting thereof held this ____ day of _____, 20____, and said plat is in compliance with the provisions of Minnesota Statutes, Section 505.03, Subd. 2.

CITY COUNCIL, CITY OF BLAINE, MINNESOTA

By: _____ Mayor By: _____ Clerk

COUNTY SURVEYOR

I hereby certify that in accordance with Minnesota Statutes, Section 505.021, Subd. 11, this plat has been reviewed and approved this ____ day of _____, 20____.

By: _____
Larry D. Hoium, Anoka County Surveyor

COUNTY AUDITOR/TREASURER

Pursuant to Minnesota Statutes, Section 505.021, Subd. 9, taxes payable in the year 20____ on the land hereinbefore described have been paid. Also, pursuant to Minnesota Statutes, Section 272.12, there are no delinquent taxes and transfer entered this ____ day of _____, 20____.

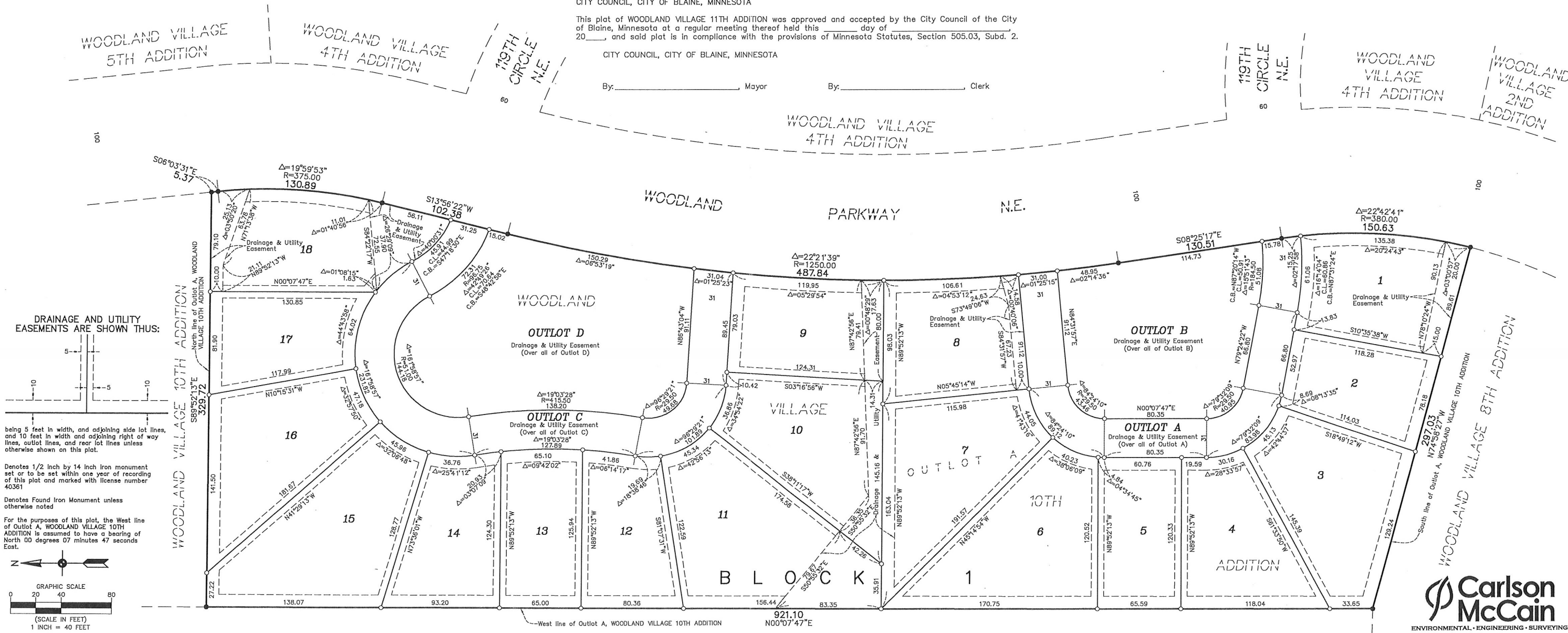
Property Tax Administrator
By _____ Deputy

COUNTY RECORDER/REGISTRAR OF TITLES

County of Anoka, State of Minnesota

I hereby certify that this plat of WOODLAND VILLAGE 11TH ADDITION was filed in the office of the County Recorder/Registrar of Titles for public record on this ____ day of _____, 20____ at ____ o'clock ____M. and was duly recorded in Book ____ Page ____ as Document Number _____.

County Recorder/Registrar of Titles
By _____ Deputy



Carlson McCain
ENVIRONMENTAL • ENGINEERING • SURVEYING