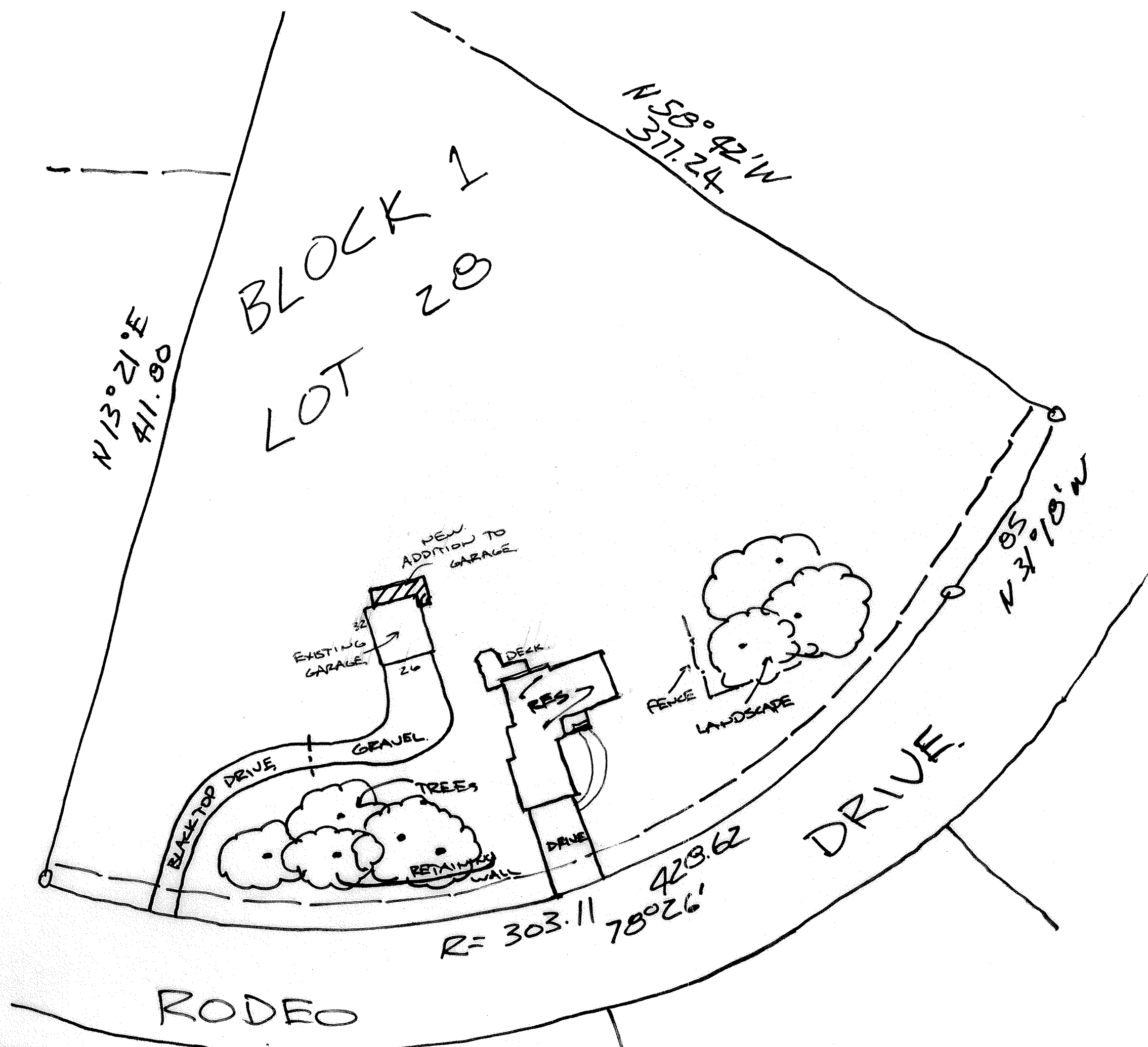




**Case File No. 14-0017**

Blaine Planning Department / 10801 Town Square Dr NE / Blaine, MN 55449 / (763) 785-6180





**RECEIVED**  
 APR 11 2014  
 CITY OF BLAINE  
 PLANNING DEPT.

STREET SIDE  
FRONT GARAGE

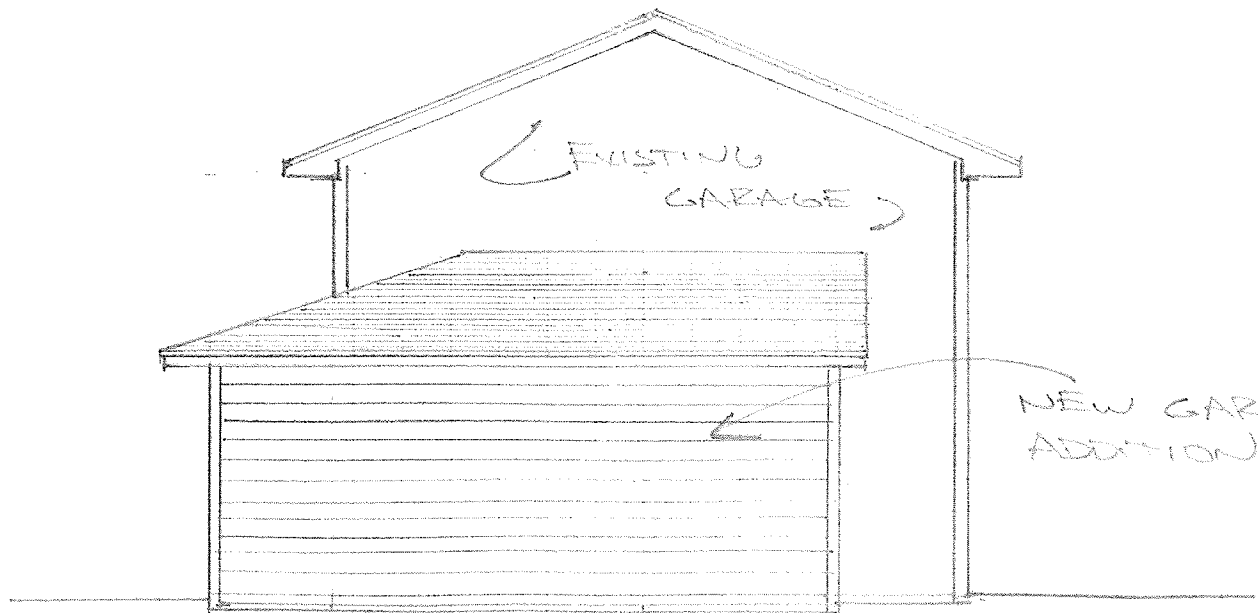


EXISTING  
GARAGE.

REAR SIDE  
BACK YARD  
ADDITION.

SIDE ELEVATION

NEW ADDITION  
TO REAR.



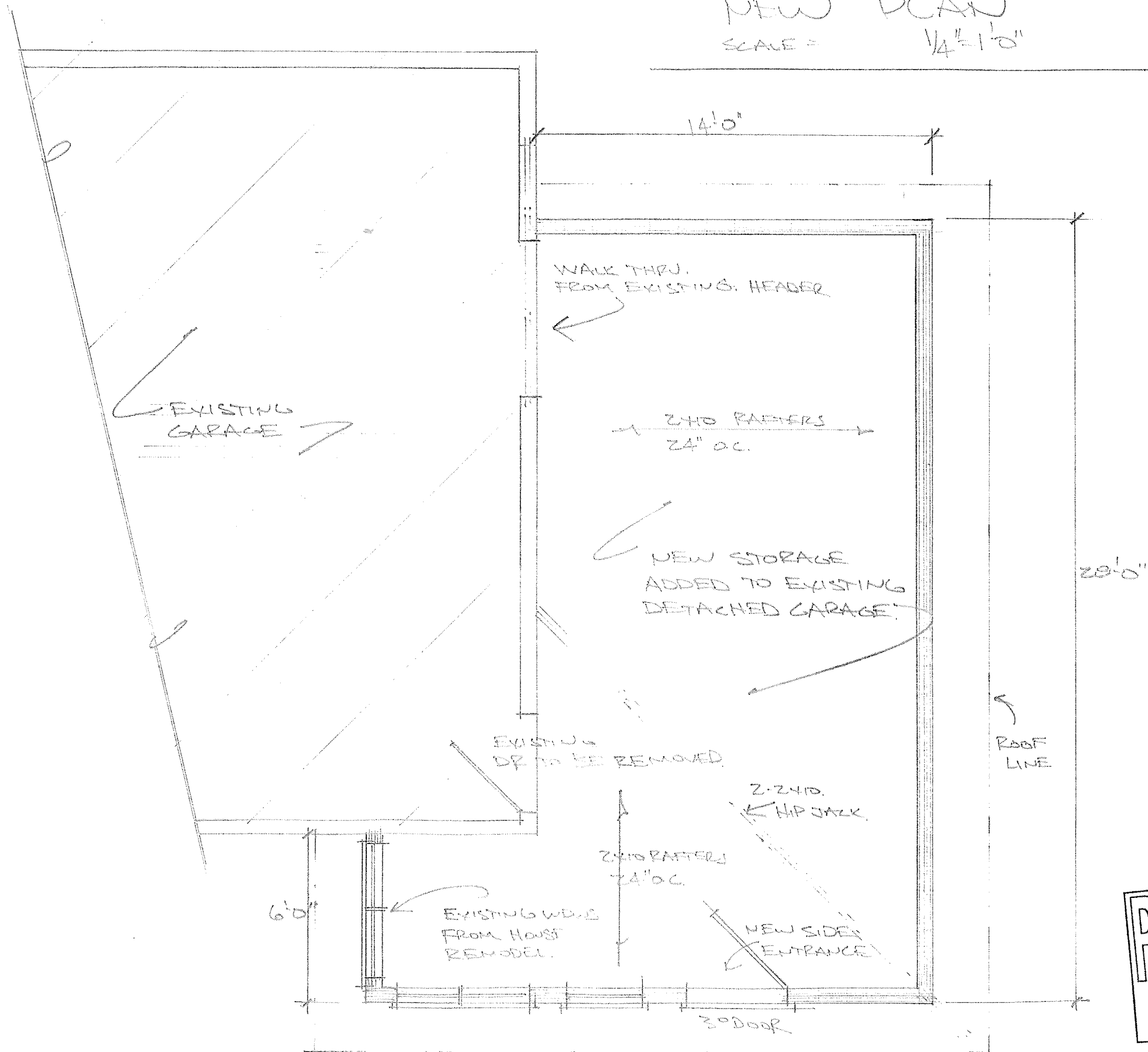
EXISTING  
GARAGE

NEW GARAGE  
ADDITION

REAR ELEVATION.

RECEIVED  
APR 11 2014  
CITY OF BLAINE  
PLANNING DEPT.

NEW PLAN  
SCALE = 1/4" = 1'-0"



ADDING TO  
EXISTING STORAGE  
SPACE IS  
- 419 SQUARE  
FEET.

RECEIVED  
APR 11 2014  
CITY OF BLAINE  
PLANNING DEPT.