

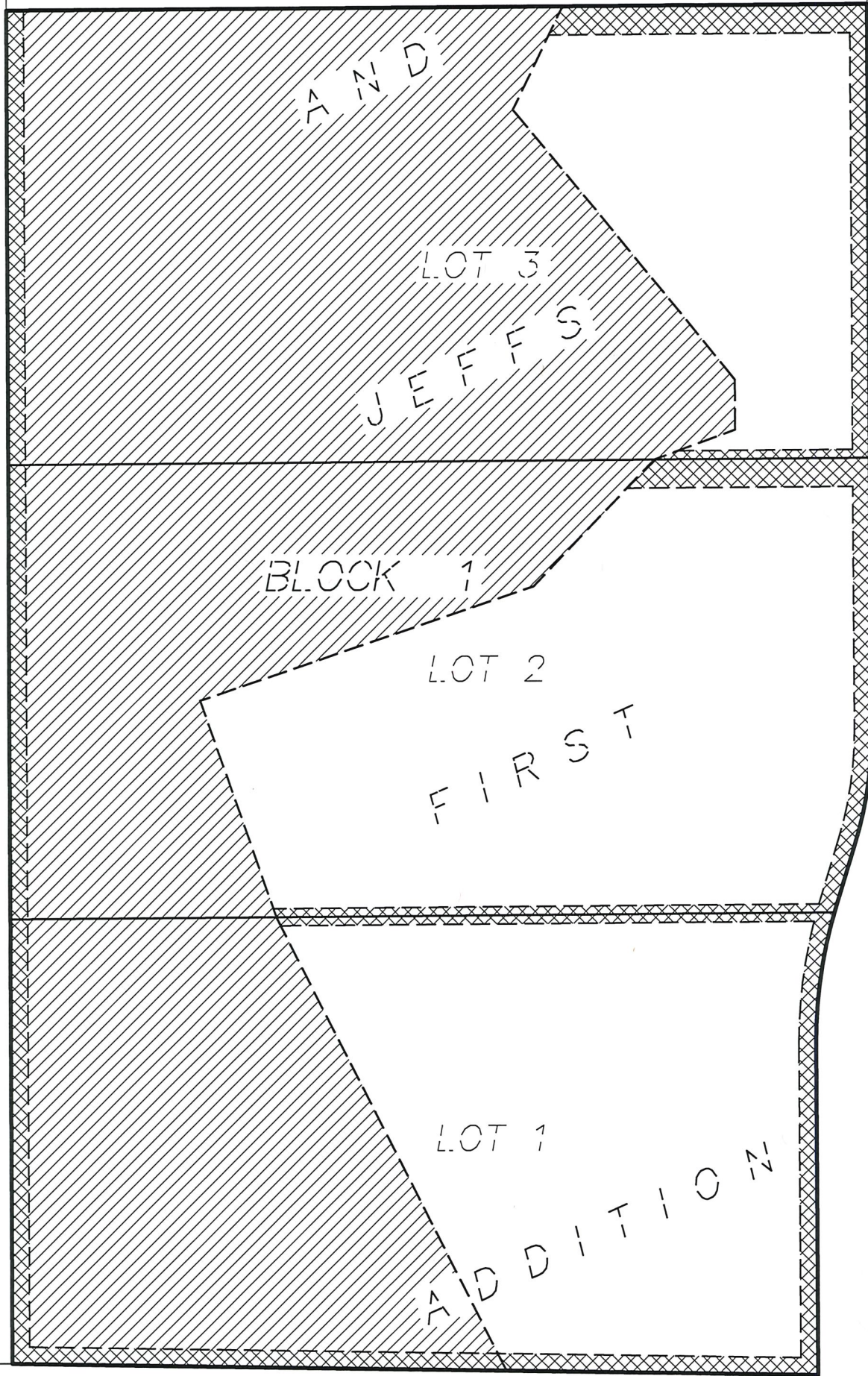
# Drainage and Utility Easement and Drainage Easement Vacation Description Sketch

EXHIBIT A



MARY LOT 4

SECTION 3,



SOUTHWEST 1/4

TOWNSHIP 31,

OF THE

SOUTHEAST 1/4

RANGE 23

125TH AVENUE NE.  
(C.S.A.H. NO. 14) (MAIN STREET)

**DRAINAGE AND UTILITY EASEMENT AND DRAINAGE EASEMENT VACATION DESCRIPTION:**

All of the drainage easements and the drainage and utility easements, as created and dedicated over, under, and across Lot 1, Lot 2, and Lot 3, Block 1, in the plat of MARY AND JEFFS FIRST ADDITION, Anoka County, Minnesota.



3890 PHEASANT RIDGE DRIVE NE, SUITE 100, BLAINE, MN 55449  
TEL 763.489.7900 \ FAX 763.489.7959 \ CARLSONMCCAIN.COM  
2236 8889\_du vacation



Drainage and Utility Easement Vacation Area



Drainage Easement Vacation Area

