

Case File No. 11-0044

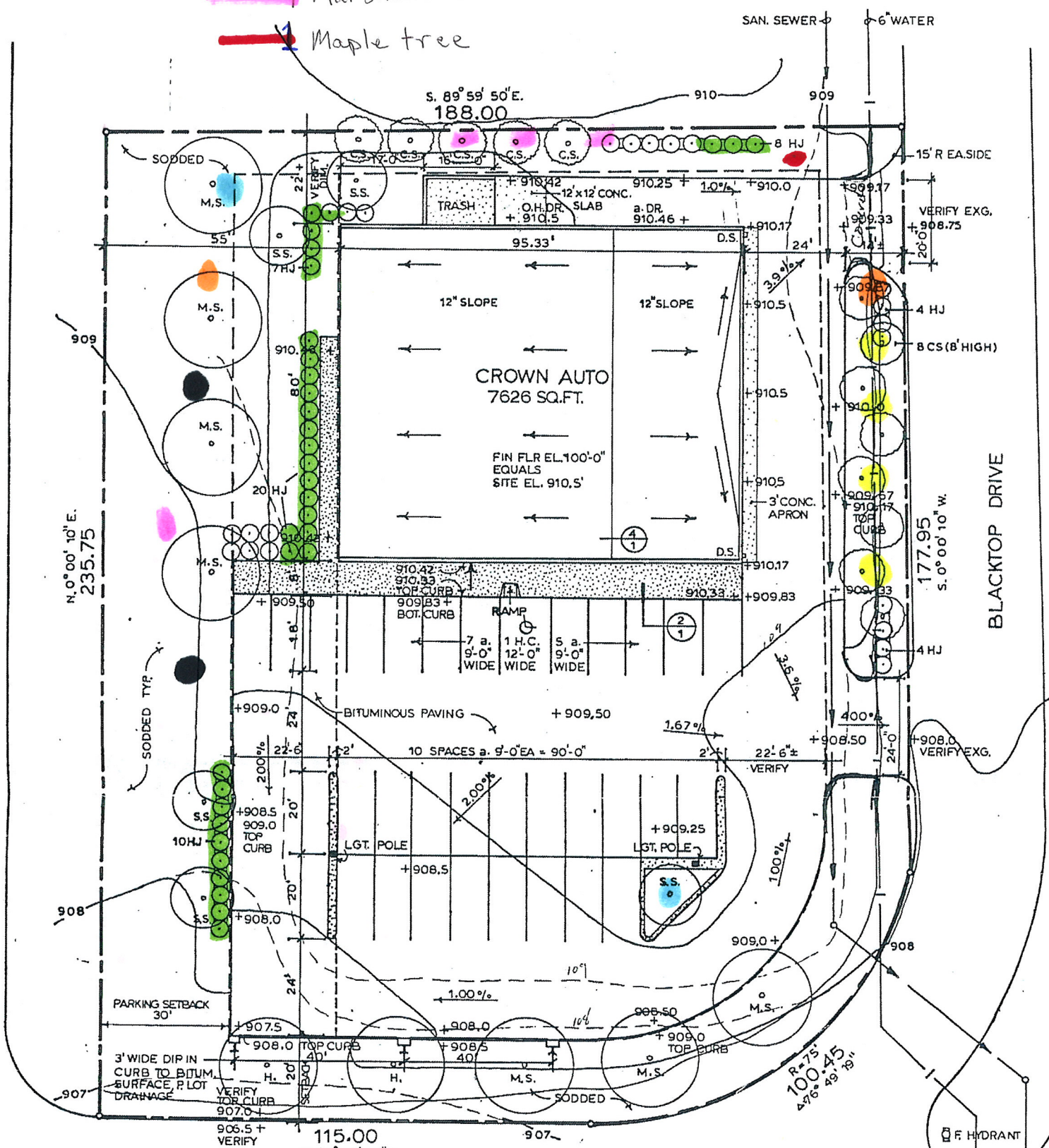


Existing Landscaping

- Hughes Juniper
- 2 Colorado Spruce 25', 20'
- 4 Marshall's Seedless ash 1-30' 3-12"
- 1 Maple tree

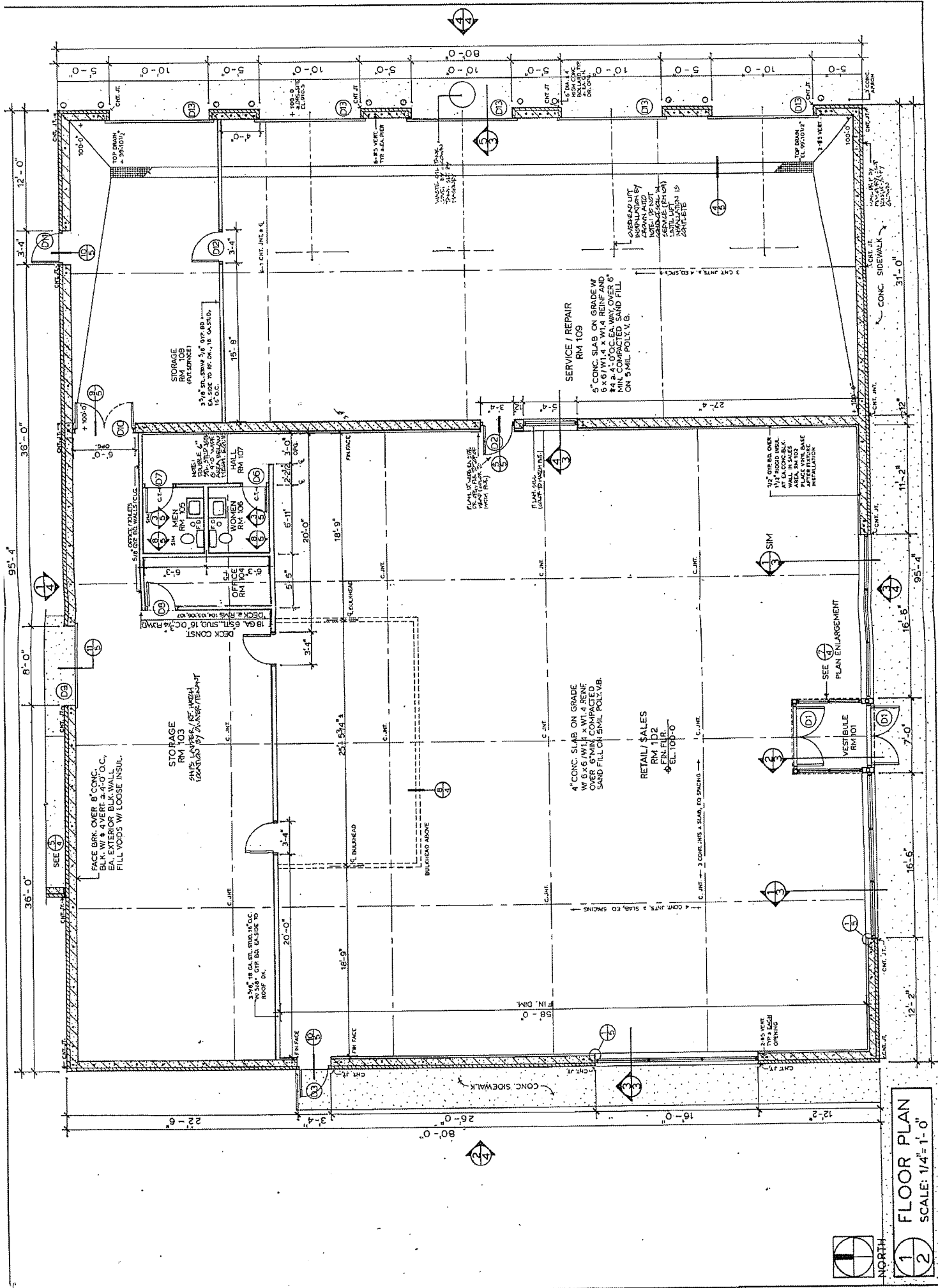
UNIVERSITY AVENUE

BLACKTOP DRIVE



Proposed Additions To Landscaping:

- 4 Ornamental Crab
- 2 Deciduous Maples
- 2 Coniferous Spruce



FACE BRK OVER 8" CONC. BLK. W/ 4 VERT. 2-4" O.C. EA. EXTERIOR BLK. WALL. FILL VOIDS W/ LOOSE INSUL.

STORAGE RM 103  
 8" MIN. LAYER OF INSULATION TO BE MAINTAINED

STORAGE RM 109  
 6" CONC. SLAB ON GRADE W/ 6 X 6 W/ 1.4 X W/ 1.4 REINF. AND 4" MIN. COMPACTED SAND FILL ON 5 MIL POLY V.B.

3" MIN. CONC. OVER 1" O.C. W/ 3/8" CRT. BR. EXPOSED TO ROOF DR.

STORAGE RM 105  
 MEN

STORAGE RM 106  
 WOMEN

OFFICE RM 104

HALL RM 107

RETAIL/SALES RM 1D2  
 4" FIN. FLR.  
 4" EL. 100'-0"

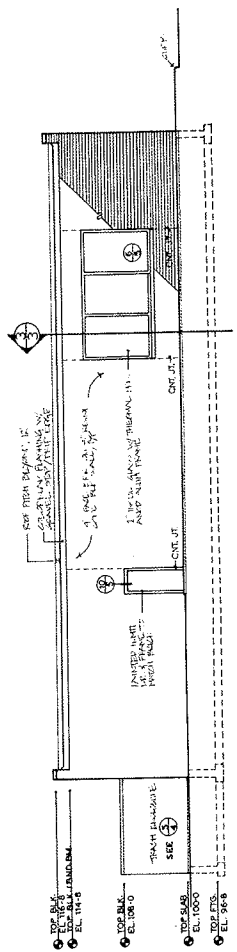
SERVICE / REPAIR RM 109  
 6" CONC. SLAB ON GRADE W/ 6 X 6 W/ 1.4 X W/ 1.4 REINF. AND 4" MIN. COMPACTED SAND FILL ON 5 MIL POLY V.B.

VESTIBULE RM 101

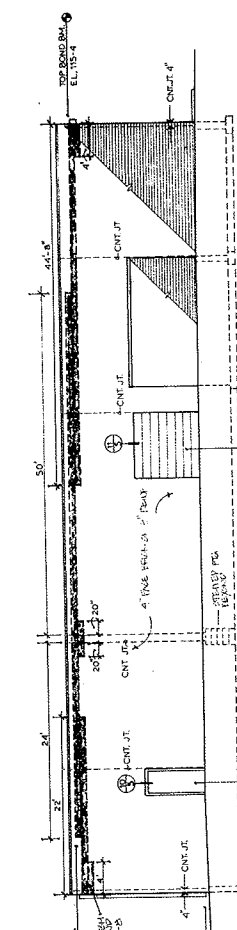
12'-2" 16'-6" 16'-5" 11'-2" 31'-0"



1 FLOOR PLAN  
 SCALE: 1/4" = 1'-0"

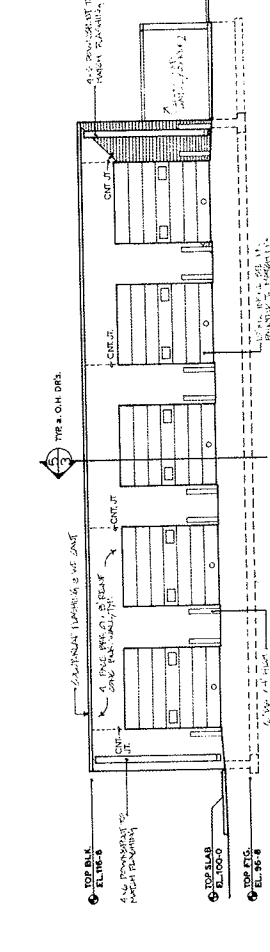


2 WEST ELEVATION  
 1/8" = 1'-0"

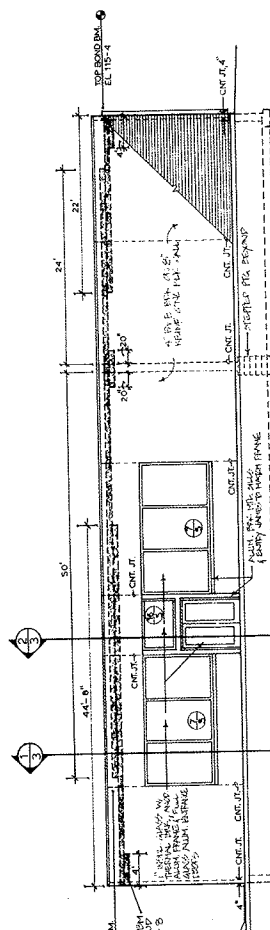


4 NORTH ELEVATION  
 1/8" = 1'-0"

BOND BEAMS SHADED  
 OPERATING PART FROM THE WALLS (SEE 1 & 2)  
 TOP BOND B.M. EL. 115.4  
 TOP B.L. EL. 114.8  
 TOP S.L. EL. 100.0

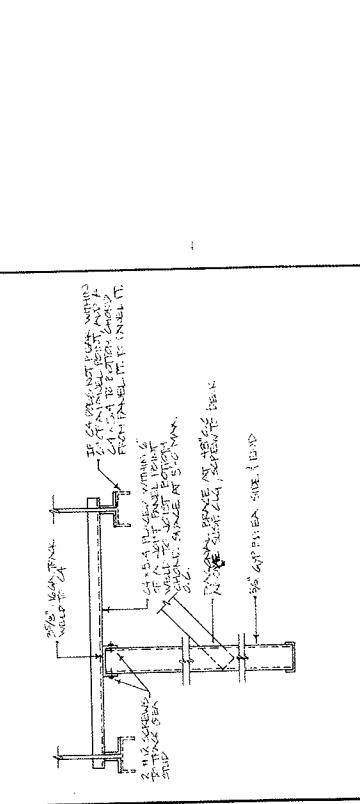


4 EAST ELEVATION  
 1/8" = 1'-0"

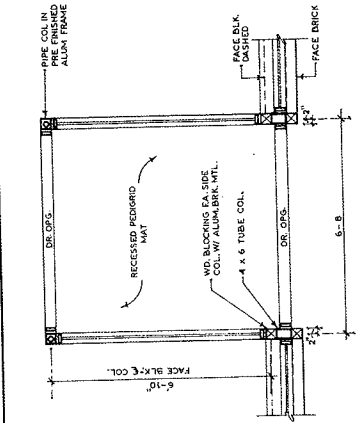


4 SOUTH ELEVATION  
 1/8" = 1'-0"

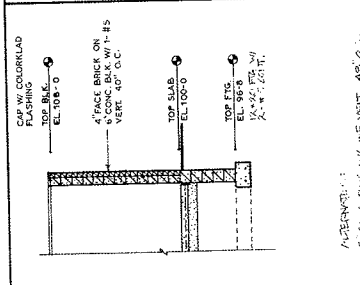
BOND BEAMS SHADED  
 OPERATING PART FROM THE WALLS (SEE 1 & 2)  
 TOP BOND B.M. EL. 115.4  
 TOP B.L. EL. 114.8  
 TOP S.L. EL. 100.0



8 DETAIL a. HANGING BULKHEAD  
 1/4" = 1'-0"

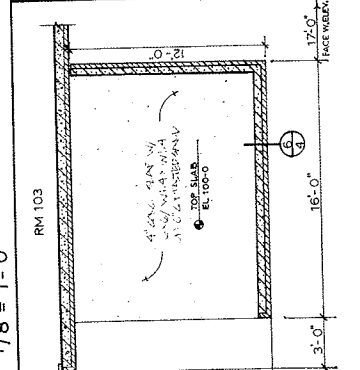


7 VESTIBULE PLAN  
 1/2" = 1'-0"



6 WALL SECTION  
 1/4" = 1'-0"

REMARKS:  
 1. CON. P.B.K. W/ 15 VERT. 48\"/>



PLAN/TRASH ENCLOSURE  
 1/4" = 1'-0"