

# WOODLAND VILLAGE 8TH ADDITION

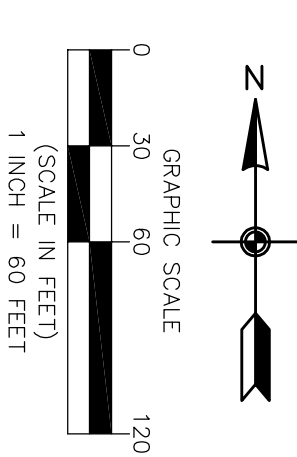
DRAINAGE AND UTILITY EASEMENTS ARE SHOWN THUS:

CITY OF BLAINE  
COUNTY OF ANOKA  
SEC. 12, TWP. 31, RANG. 23

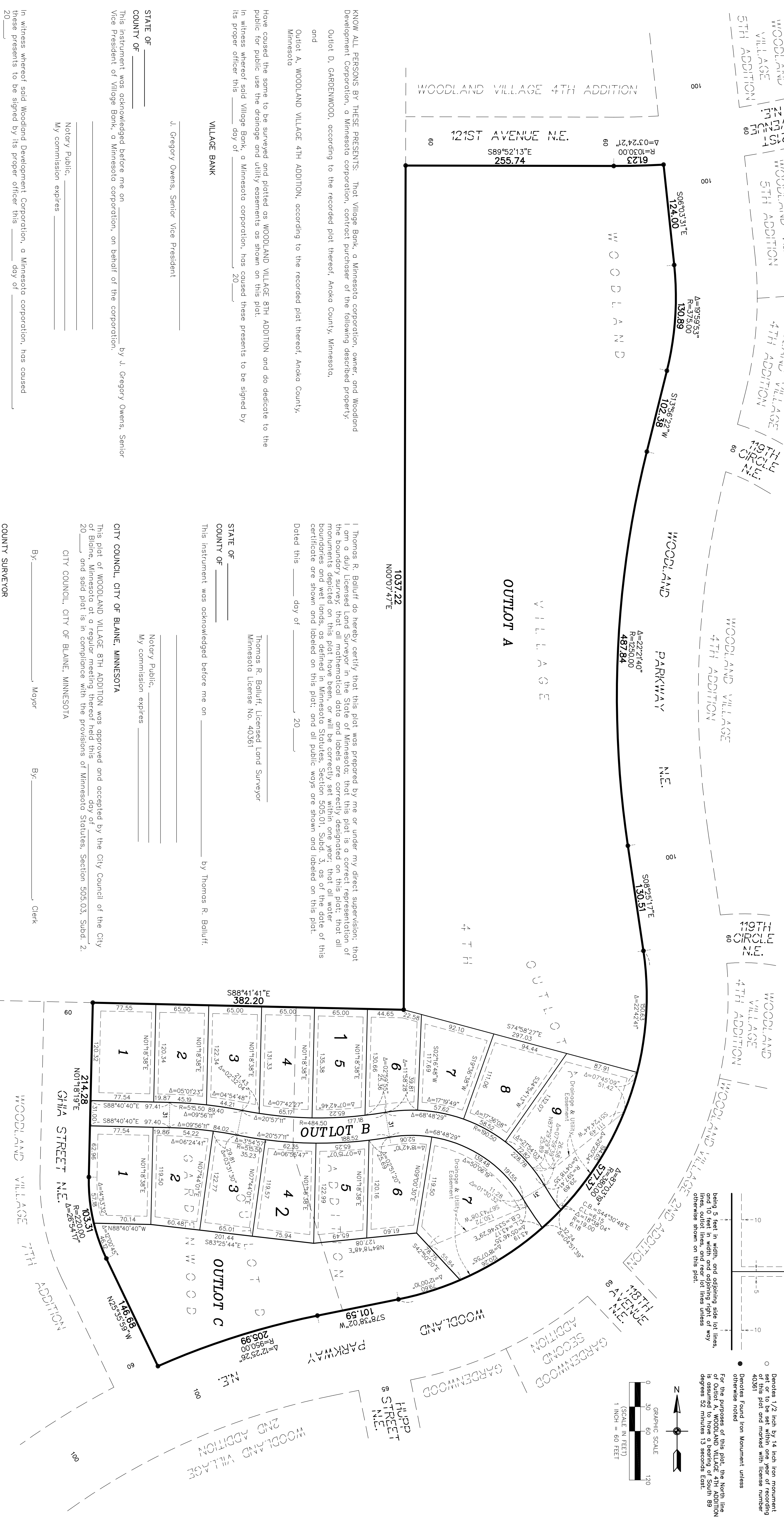
• Denotes Found from Monument unless otherwise noted

○ Denotes 1/2 inch by 14 inch iron monument set or to be set within one year of recording of this plat and marked with license number 40361

For the purposes of this plat, the North line of Outlot B in Woodland Village 4th Addition is assumed to have a bearing of South 89 degrees 52 minutes 13 seconds East.



Being 5 feet in width, and adjoining side lot lines, and 10 feet in width, and adjoining right of way lines, outlet lines, and rear lot lines unless otherwise shown on this plat.



KNOW ALL PERSONS BY THESE PRESENTS: That Village Bank, a Minnesota corporation, owner, and Woodland Development Corporation, a Minnesota corporation, contract purchaser of the following described property:  
Outlot D, GARDENWOOD, according to the recorded plat thereof, Anoka County, Minnesota,  
and  
Outlot A, WOODLAND VILLAGE 4TH ADDITION, according to the recorded plat thereof, Anoka County, Minnesota

Have caused the same to be surveyed and platted as WOODLAND VILLAGE 8TH ADDITION and do dedicate to the public for public use the drainage and utility easements as shown on this plat.

In witness whereof said Village Bank, a Minnesota corporation, has caused these presents to be signed by its proper officer this \_\_\_\_\_ day of \_\_\_\_\_, 20\_\_\_\_.

VILLAGE BANK  
J. Gregory Owens, Senior Vice President

STATE OF \_\_\_\_\_  
COUNTY OF \_\_\_\_\_  
This instrument was acknowledged before me on \_\_\_\_\_ by J. Gregory Owens, Senior Vice President of Village Bank, a Minnesota corporation, on behalf of the corporation.

Notary Public, \_\_\_\_\_  
My commission expires \_\_\_\_\_

Thomas R. Bolluff do hereby certify that this plat was prepared by me or under my direct supervision; that I am a duly Licensed Land Surveyor in the State of Minnesota; that this plat is a correct representation of the boundary survey; that all mathematical data and labels are correctly designated on this plat; that all monuments depicted on this plat have been, or will be correctly set within one year; that all water boundaries and wet lands, as defined in Minnesota Statutes, Section 505.01, Subd. 3, as of the date of this certificate are shown and labeled on this plat; and all public ways are shown and labeled on this plat.

Dated this \_\_\_\_\_ day of \_\_\_\_\_, 20\_\_\_\_.

Thomas R. Bolluff, Licensed Land Surveyor  
Minnesota License No. 40361

STATE OF \_\_\_\_\_  
COUNTY OF \_\_\_\_\_  
This instrument was acknowledged before me on \_\_\_\_\_ by Thomas R. Bolluff.

Notary Public, \_\_\_\_\_  
My commission expires \_\_\_\_\_

CITY COUNCIL, CITY OF BLAINE, MINNESOTA  
This plat of WOODLAND VILLAGE 8TH ADDITION was approved and accepted by the City Council of the City of Blaine, Minnesota at a regular meeting thereof held this \_\_\_\_\_ day of \_\_\_\_\_, 20\_\_\_\_, and said plat is in compliance with the provisions of Minnesota Statutes, Section 505.03, Subd. 2.

CITY COUNCIL, CITY OF BLAINE, MINNESOTA

WOODLAND DEVELOPMENT CORPORATION  
By: \_\_\_\_\_  
Byron D. Westlund, President

COUNTY SURVEYOR  
I hereby certify that in accordance with Minnesota Statutes, Section 505.021, Subd. 11, this plat has been reviewed and approved this \_\_\_\_\_ day of \_\_\_\_\_, 20\_\_\_\_.

By: \_\_\_\_\_ Mayor  
By: \_\_\_\_\_ Clerk

Larry D. Holm, Anoka County Surveyor

COUNTY RECORDER/REGISTRAR OF TITLES  
County of Anoka, State of Minnesota  
I hereby certify that this plat of WOODLAND VILLAGE 8TH ADDITION was filed in the office of the County Recorder/Registrar of Titles for public record this \_\_\_\_\_ day of \_\_\_\_\_, 20\_\_\_\_ at \_\_\_\_\_ o'clock \_\_\_\_\_ M., and was duly recorded in Book \_\_\_\_\_ Page \_\_\_\_\_ as Document Number \_\_\_\_\_.

County Recorder/Registrar of Titles  
By: \_\_\_\_\_ Deputy

STATE OF \_\_\_\_\_  
COUNTY OF \_\_\_\_\_  
This instrument was acknowledged before me on \_\_\_\_\_ by Byron D. Westlund, President of Woodland Development Corporation, a Minnesota corporation, on behalf of the corporation.

Notary Public, \_\_\_\_\_  
My commission expires \_\_\_\_\_

Property Tax Administrator  
Deputy

