

THE LAKES OF RADISSON FORTY-NINTH ADDITION

KNOW ALL PERSONS BY THESE PRESENTS: That Hans Hogen Homes, Inc., a Minnesota corporation, owner of the following described property:

Outlet Y, THE LAKES OF RADISSON TWENTIETH ADDITION, Anoka County, Minnesota.

Has caused the same to be surveyed and platted as THE LAKES OF RADISSON FORTY-NINTH ADDITION and does hereby dedicate to the public for public use forever the Court and the drainage and utility easements as shown on this plat.

In witness whereof said Hans Hogen Homes, Inc., a Minnesota corporation, has caused these presents to be signed by its proper officer this _____ day of _____, 20____.

HANS HOGEN HOMES
John P. Raak _____, as Vice President

STATE OF MINNESOTA
COUNTY OF _____
This instrument was acknowledged before me this _____ day of _____, 20____ by John P. Raak, as Vice President of Hans Hogen Homes, a Minnesota corporation, on behalf of the corporation.

Notary Public, _____ County, Minnesota
My Commission Expires _____

I, Daniel W. Obermiller, do hereby certify that this plat was prepared by me or under my direct supervision; that I am a duly Licensed Land Surveyor in the State of Minnesota; that this plat is a correct representation of the boundary survey, that I have made, and that the same is true and correct; that I have caused the same to be correctly set within one year; that all wet land boundaries and wet lands, as defined in Minnesota Statutes, Section 505.01, Subd. 3, as of the date of this certificate are shown and labeled on this plat; and all public ways are shown and labeled on this plat.

Dated this _____ day of _____, 20____.

Daniel W. Obermiller, Licensed Land Surveyor
Minnesota License No. 25341

STATE OF MINNESOTA
COUNTY OF _____
This instrument was acknowledged before me this _____ day of _____, 20____ by Daniel W. Obermiller.

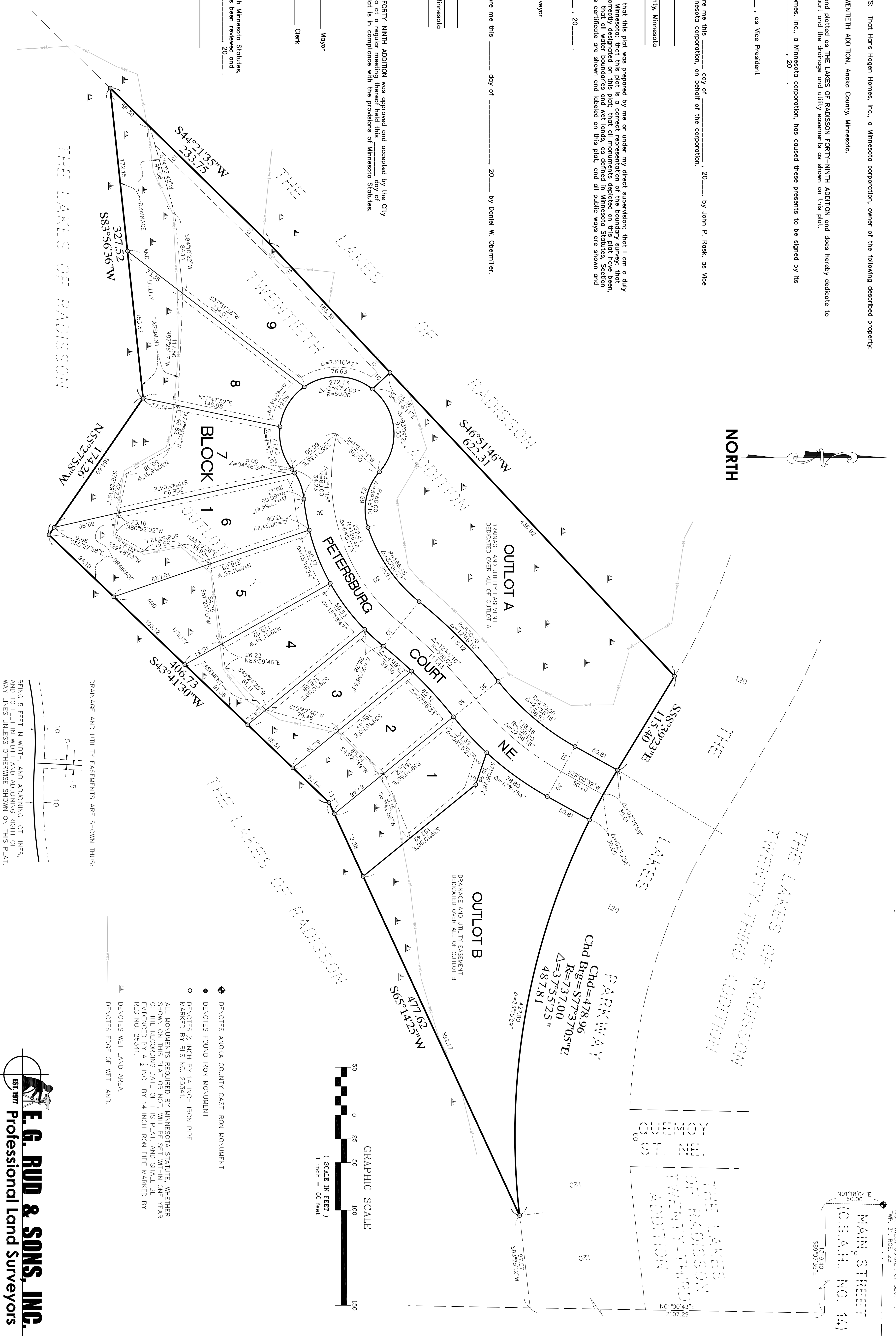
Notary Public, _____ County, Minnesota
My Commission Expires _____

City Council, City of Blaine, Minnesota
This plot of THE LAKES OF RADISSON FORTY-NINTH ADDITION was approved and accepted by the City Council of the City of Blaine, Minnesota, at a regular meeting thereof held this _____ day of _____, 20____, and said plat is in compliance with the provisions of Minnesota Statutes, Section 505.03, Subd. 2, City Council, City of Blaine, Minnesota

By _____ Mayor
By _____ Clerk
County Surveyor

I hereby certify that in accordance with Minnesota Statutes, Section 505.021, Subd. II, this plat has been reviewed and approved this _____ day of _____, 20____.

Larry D. Halum
Anoka County Surveyor



For the purposes of this plat the north line of the Northwest Quarter of Section 11, Township 31, Range 23, Anoka County, Minnesota, is assumed to have a bearing of S89°07'35"E.

City of Blaine
County of Anoka
Sec. 11, T31, R23

EST. 1917
E.G. RUD & SONS, INC.
Professional Land Surveyors