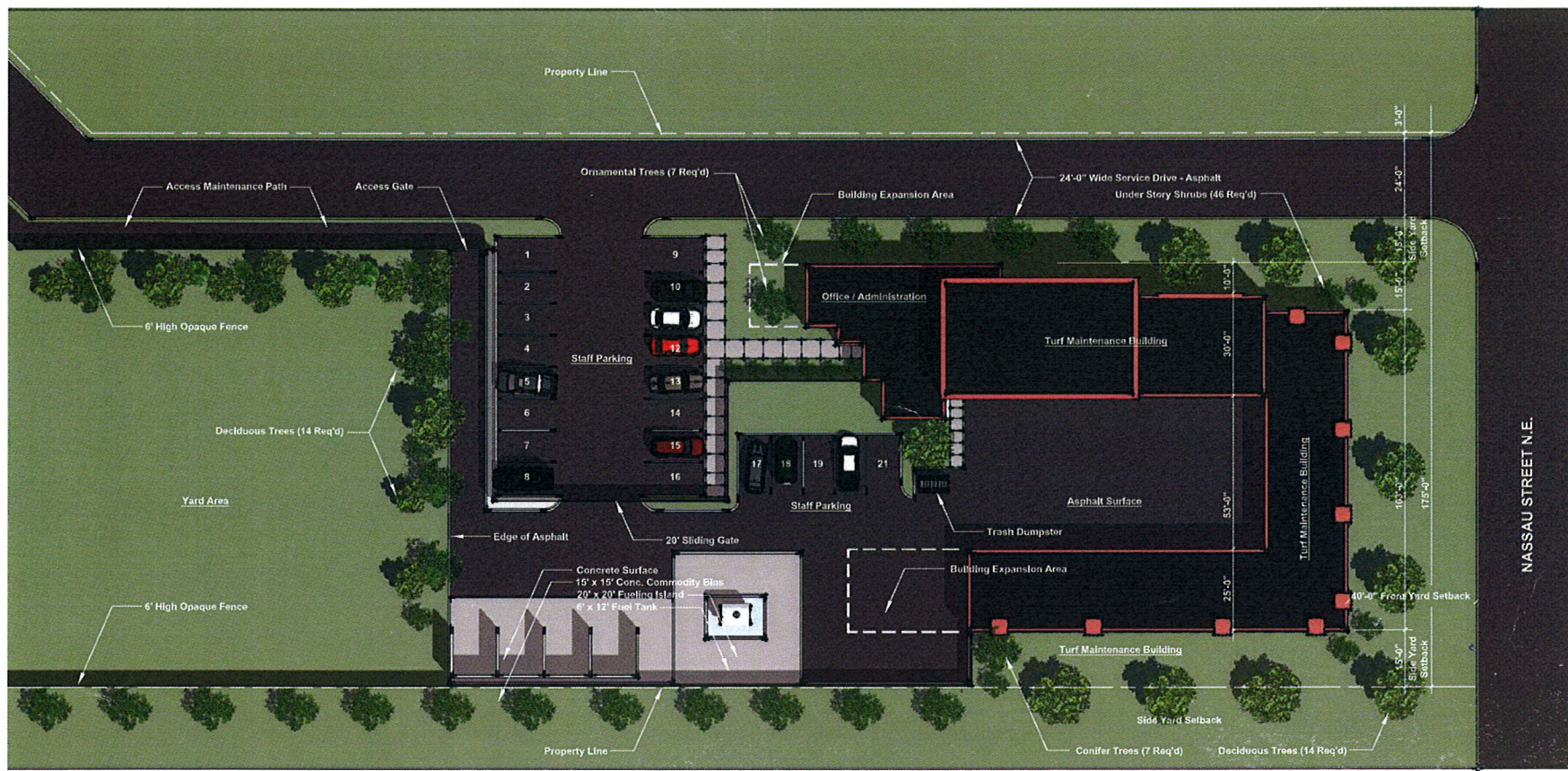


**Case File No. 14-0043**

Blaine Planning Department / 10801 Town Square Dr NE / Blaine, MN 55449 / (763) 785-6180





ARCHITECTURAL SITE PLAN - PRELIMINARY  
 SCALE: 1/16" = 1'-0"



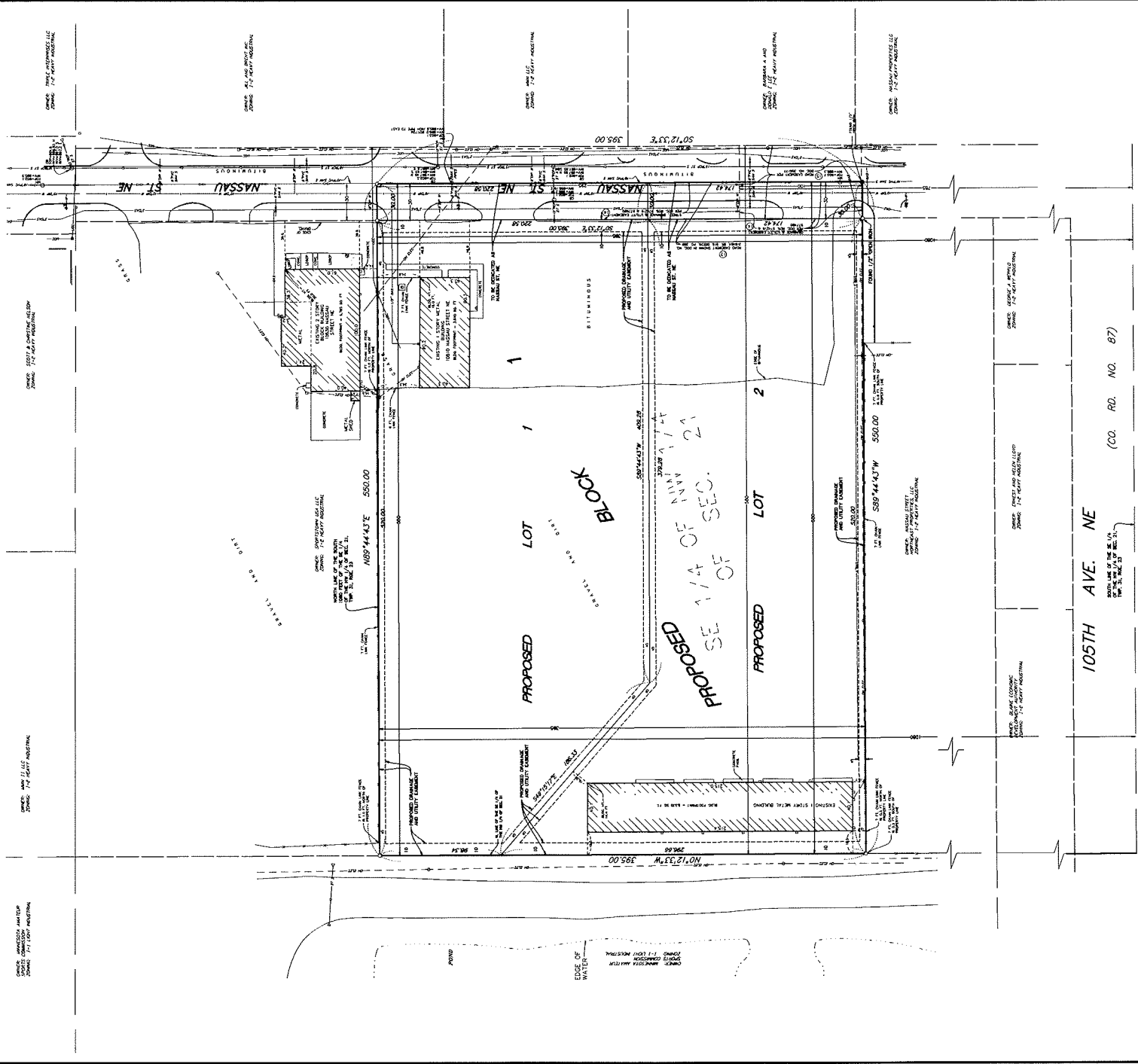
David Leschak  
 Architects  
 14385 4th Avenue North  
 Plymouth, MN 55447

Proposed Turf Maintenance Building  
 National Sports Center  
 1700 105th Avenue NE, Blaine, Minnesota 55449

DRAWN	DNA
CHECKED	
DATE	MAY 23, 2014
PROJECT NO.	1463
REVISIONS	

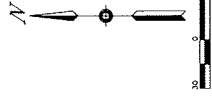
ISSUED FOR CONSTRUCTION  
 SHEET TITLE  
 ARCHITECTURAL  
 SITE PLAN -  
 PRELIMINARY  
 SHEET NO.

A.3



**NOTE:**  
 1. All dimensions are in feet and inches.  
 2. All bearings are in degrees, minutes and seconds.  
 3. All distances are in feet and inches.  
 4. All areas are in square feet.  
 5. All volumes are in cubic feet.  
 6. All weights are in pounds.  
 7. All temperatures are in degrees Fahrenheit.  
 8. All pressures are in pounds per square inch.  
 9. All forces are in pounds.  
 10. All moments are in foot-pounds.

**OSCAR J. JOSEPH**  
 1700 100th Ave. NE  
 Suite 100  
 Bellevue, WA 98004  
 Phone: 206-835-1234  
 Email: oscar@oscarjoseph.com



Dated this 21st day of July, 2014  
 Certified by: **Edward F. Collins**  
 Licensed Professional Surveyor  
 License No. 14380

