

Case File No. 17-0008
Preserve at Legacy Creek 4th Addition

Blaine Planning Department / 10801 Town Square Dr NE / Blaine, MN 55449 / (763) 785-6180



PRESERVE AT LEGACY CREEK 4TH ADDITION

CITY OF BLAINE
COUNTY OF ANOKA
SEC. 2&3, T. 31, R. 23

KNOW ALL PERSONS BY THESE PRESENTS: That CalAtlantic Group, Inc., a Delaware corporation, fee owner of the following described property:

Outlot A, PRESERVE AT LEGACY CREEK 3RD ADDITION, according to the recorded plat thereof, Anoka County, Minnesota

Has caused the same to be surveyed and platted as PRESERVE AT LEGACY CREEK 4TH ADDITION and does hereby dedicate to the public for public use the public ways and also the drainage and utility easements as shown on this plat.

In witness whereof said CalAtlantic Group, Inc., a Delaware corporation, has caused these presents to be signed by its proper officers this _____ day of _____, 20____.

CALATLANTIC GROUP, INC.

By _____
Michael W. DeVoe, Operational Vice President

STATE OF MINNESOTA
COUNTY OF _____

The foregoing instrument was acknowledged before me this _____ day of _____, 20____ by Michael W. DeVoe, its Operational Vice President of CalAtlantic Group, Inc., a Delaware corporation, on behalf of the corporation.

(Signature) _____
(Name Printed)
Notary Public, _____ County, Minnesota
My Commission Expires _____

I Craig W. Morse do hereby certify that this plat was prepared by me or under my direct supervision; that I am a duly Licensed Land Surveyor in the State of Minnesota; that this plat is a correct representation of the boundary survey; that all mathematical data and labels are correctly designated on this plat; that all monuments depicted on this plat have been, or will be correctly set within one year; that all water boundaries and wet lands, as defined in Minnesota Statutes, Section 505.01, Subd. 3, as of the date of this certificate are shown and labeled on this plat; and all public ways are shown and labeled on this plat.

Craig W. Morse, Land Surveyor
Minnesota License No. 23021

STATE OF MINNESOTA
COUNTY OF HENNEPIN

This instrument was acknowledged before me this _____ day of _____, 20____ by _____, Land Surveyor.

(Signature) _____
(Name Printed)
Notary Public, _____ County, Minnesota
My Commission Expires _____

CITY COUNCIL, CITY OF BLAINE, MINNESOTA

This plat of PRESERVE AT LEGACY CREEK 4TH ADDITION was approved and accepted by the City Council of the city of Blaine, Minnesota at a regular meeting thereof held this _____ day of _____, 20____, and said plat is in compliance with the provisions of Minnesota Statutes, Section 505.03, Subd. 2.

Mayor _____ Clerk

COUNTY SURVEYOR

I hereby certify that in accordance with Minnesota Statutes, Section 505.021, Subd. 11, this plat has been reviewed and approved this _____ day of _____, 20____.

Larry D. Holm, Anoka County Surveyor

COUNTY AUDITOR/TREASURER

Pursuant to Minnesota Statutes, Section 505.021, Subd. 9, taxes payable in the year 20____ on the land hereinbefore described have been paid. Also, pursuant to Minnesota Statutes, Section 272.12, there are no delinquent taxes and transfer entered this _____ day of _____, 20____.

Property Tax Administrator
By _____, Deputy

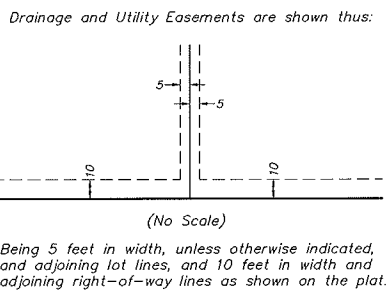
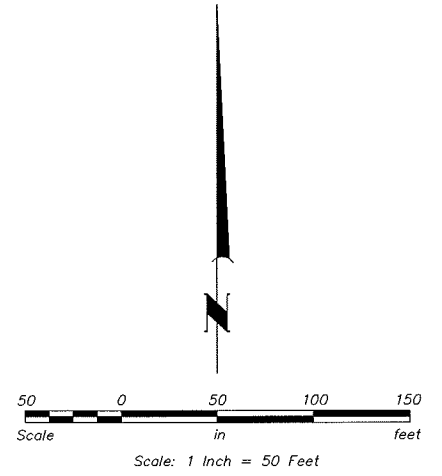
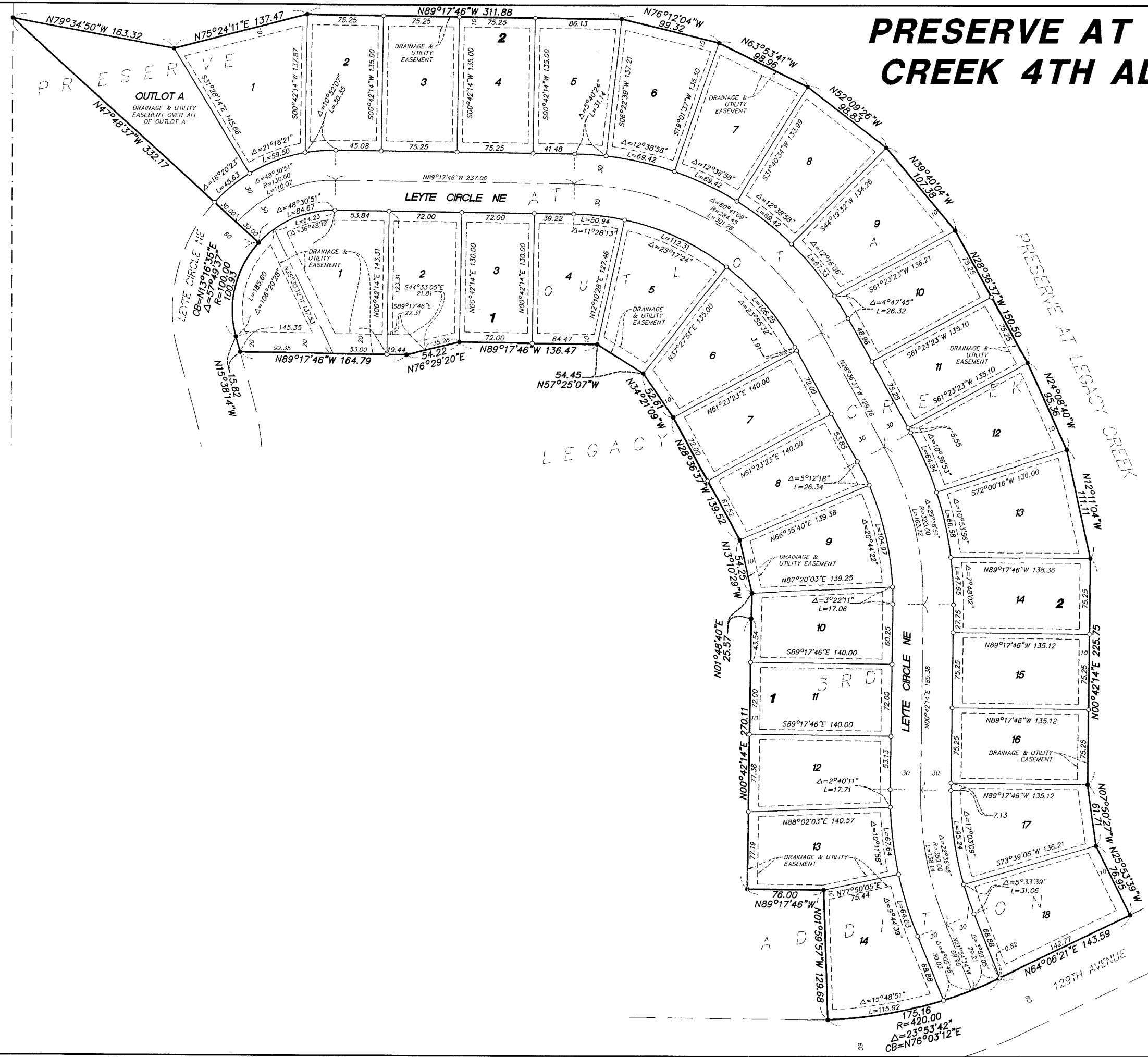
COUNTY RECORDER/REGISTRAR OF TITLES
COUNTY OF ANOKA, STATE OF MINNESOTA

I hereby certify that this plat of PRESERVE AT LEGACY CREEK 4TH ADDITION was filed in the office of the County Recorder/Registrar of Titles for public record on this _____ day of _____, 20____, at _____ o'clock _____M. and was duly recorded in Book _____ Page _____, as Document Number _____.

County Recorder/Registrar of Titles
By _____, Deputy

PRESERVE AT LEGACY CREEK 4TH ADDITION

CITY OF BLAINE
 COUNTY OF ANOKA
 SEC. 2&3, T. 31, R. 23



The most southeasterly line of Outlot A, PRESERVE AT LEGACY CREEK 3RD ADDITION is assumed to bear N 64°06'21" E.

- Denotes 1/2 inch by 14 inch iron rebar set and marked by License No. 23021
- Denotes 1/2 inch by 14 inch iron rebar found and marked by License No. 23021