

Case File No. 12-0028





LAMPERT ARCHITECTS
 420 Summit Avenue
 St. Paul, MN 55112
 (612) 292-2243
 lampert@lampert-arch.com

ARCHITECT DESCRIPTION
 LAMPERT ARCHITECTS HAS PREPARED THIS PLAN, SPECIFICATIONS AND NOTES FOR THE PROPOSED PROJECT. THE CLIENT HAS REVIEWED AND APPROVED THIS PLAN, SPECIFICATIONS AND NOTES. LAMPERT ARCHITECTS MAKES NO WARRANTY, REPRESENTATION OR GUARANTEE AS TO THE ACCURACY OF THE INFORMATION PROVIDED HEREON.

PRELIMINARY FOR CONSTRUCTION
 13600
 13600

CLASSIC CONSTRUCTION
 13600
 13600

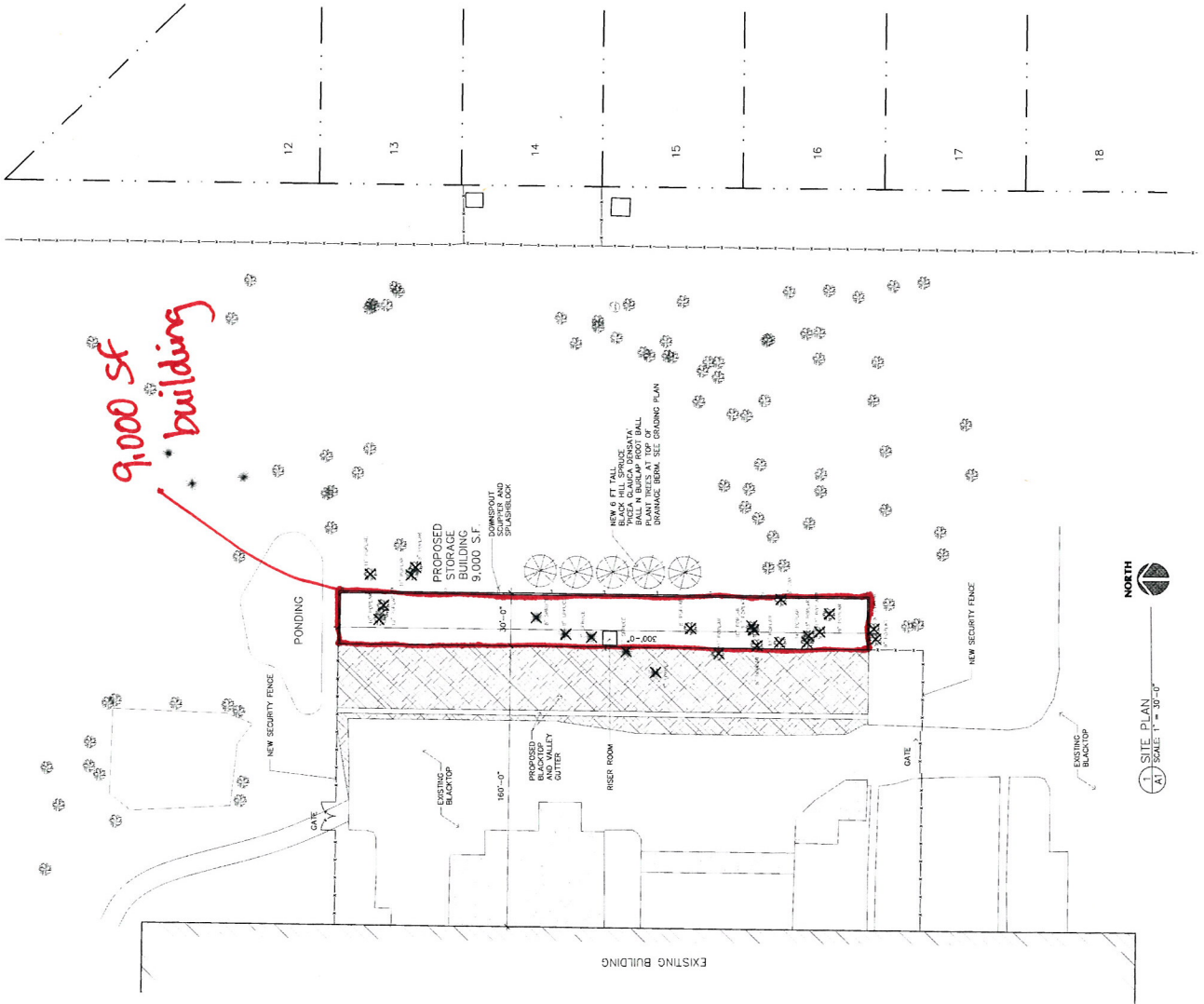
BERMO, INC.
 4501 Ball Rd NE, Blaine, MN

02/09/2012
 LAMPERT ARCHITECTS, P.A.
 Project Designer: JAMES B
 Drawn By: JRB
 Checked By: LL
 Revision:
 02/14/12 - PRELIMINARY

SITE PLAN
 Sheet Number

A1

Project No. 120612-1



NORTH
 1" = 30'-0"
 SITE PLAN
 A1

