

Case File No. 15-0045



Anoka Airport - Parcel 3



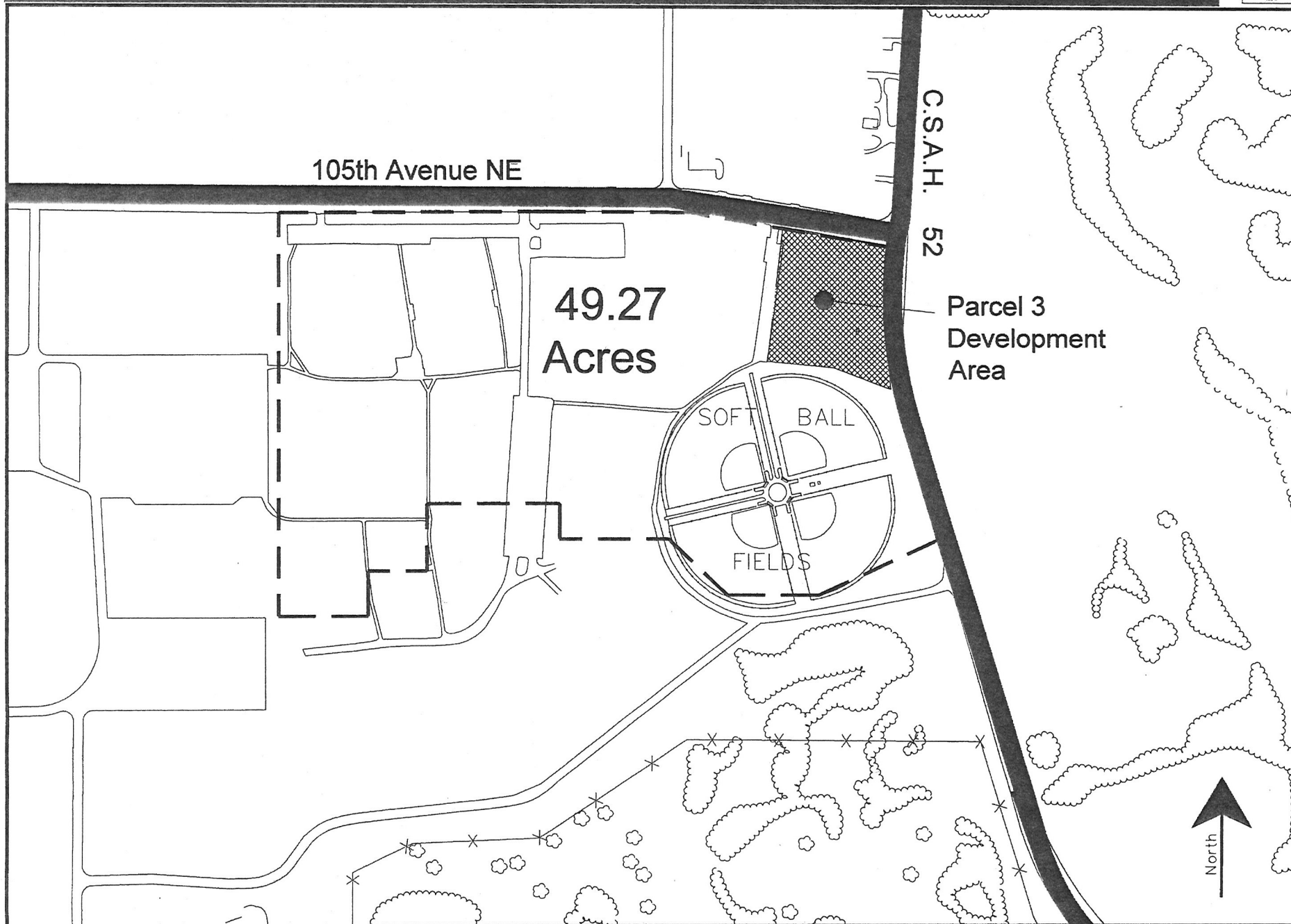
105th Avenue NE

C.S.A.H. 52

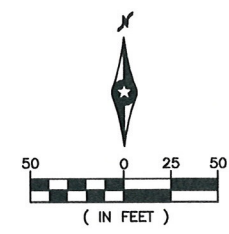
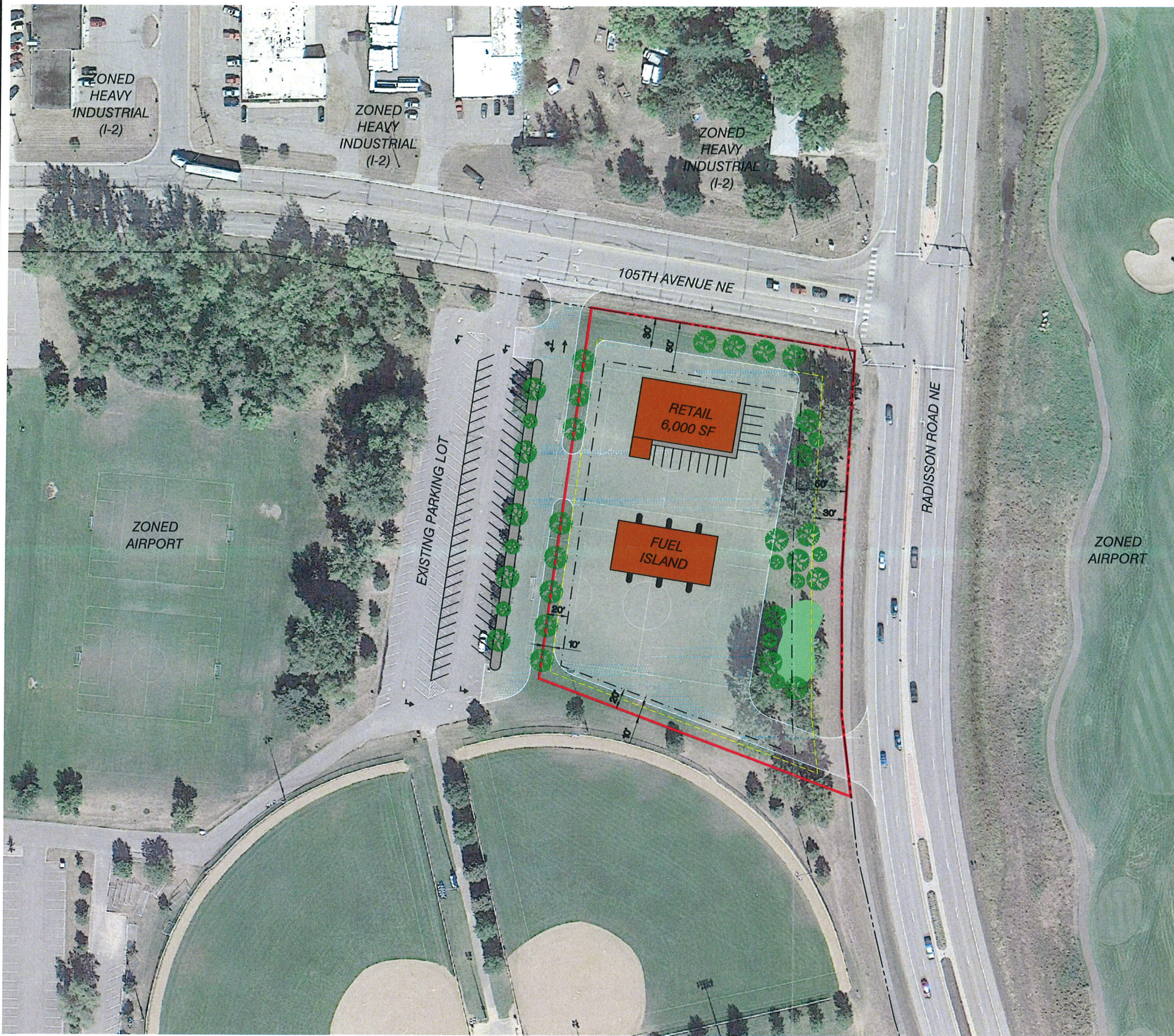
49.27
Acres

Parcel 3
Development
Area

SOFT BALL
FIELDS



S:\K0\A\MAC00\124476_Anoka\51-drawings\65-Aviation\ANE-124476_Figures.dwg 4/2/2014 1:49 PM ireldt



- LEGEND:**
- PROPOSED PARCEL BOUNDARY
 - - - - - PROPOSED BUILDING SETBACK LINES
 - - - - - PROPOSED PAVED SURFACES SETBACK LINES
 - - - - - EXISTING RIGHT OF WAY
 - CONCEPTUAL BUILDING LOCATIONS
 - CONCEPTUAL PAVED SURFACES
 - CONCEPTUAL WALKS, MEDIANS, PATIOS
 - CONCEPTUAL STORM WATER INFILTRATION
 - CONCEPTUAL VEGETATION SCREENING

PARCEL 3
 TOTAL AREA = 2.65 ACRES
 EXISTING ZONING CLASSIFICATION = AIRPORT
 PROPOSED ZONING = COMMUNITY COMMERCIAL (B-2)
 CONCEPTUAL TOTAL STRUCTURE AREA = 6,000 SF
 THIS PARCEL UNDERLIES FAR PART 77
 HORIZONTAL SURFACE
 FROM ELEV. 1,062' MSL

3335 MONAS CENTER DR
 ST PAUL, MN 55110
 PHONE: 651.462.2500
 FAX: 651.462.2505
 WWW.SEH.COM

6040 SOUTH 26TH AVENUE
 SUITE 100
 ST. PAUL, MN 55120
 PHONE: 612.726.8100
 WWW.METROAIRPORTS.ORG

ANOKA COUNTY-BLAINE AIRPORT
 COMMERCIAL
 DEVELOPMENT
 BLAINE, MN

MARK	DATE	REVISIONS

SEH FILE NO. MAC-124476
 MAC PROJECT NO. 110-5-XXX
 ISSUE DATE 4-4-14
 DESIGNED BY MDZ
 DRAWN BY LFR
 Short Elliott Hendrickson, Inc. © (SEH)
 © 2004 Short Elliott Hendrickson, Inc.

SHEET TITLE
 PARCEL 3
 CONCEPT 1
 PLAN VIEW

SHEET
 FIGURE
 3.1