

Case File No. 16-0013



WESTON WOODS ON RICE CREEK 2ND ADDITION

City of Blaine
County of Anoka
Sec. 36, T. 31, R. 23

KNOW ALL PERSONS BY THESE PRESENTS: That Mark of Excellence Homes, Inc., a Minnesota corporation, owns of the following described property:

Outlot B, WESTON WOODS ON RICE CREEK, according to the record plat thereof, Anoka County, Minnesota.

Has caused the same to be surveyed and platted as WESTON WOODS ON RICE CREEK 2ND ADDITION and does hereby dedicate to the public for public use the drainage and utility easements as created by this plat. Also dedicating to the County of Anoka the right of access onto County State Aid Highway No. 17 as shown on this plat.

In witness whereof said Mark of Excellence Homes, Inc., a Minnesota corporation, has caused these presents to be signed by its proper officer this _____ day of _____, 20____.

MARK OF EXCELLENCE HOMES, INC.

STATE OF MINNESOTA
COUNTY OF _____

This instrument was acknowledged before me this _____ day of _____, 20____ by _____ of Mark of Excellence Homes, Inc., a Minnesota corporation, on behalf of the corporation.

Notary Public, _____ County, Minnesota
My Commission Expires _____

I, Eric B. Lindgren do hereby certify that this plat was prepared by me or under my direct supervision; that I am a duly Licensed Land Surveyor in the State of Minnesota; that this plat is a correct representation of the boundary survey; that all mathematical data and labels are correctly designated on this plat; that all monuments depicted on this plat have been, or will be correctly set within one year; that all water boundaries and wetlands, as defined in Minnesota Statutes, Section 555.01, Subd. 3, as of the date of this certificate are shown and labeled on this plat; and all public ways are shown and labeled on this plat.

Dated this _____ day of _____, 20____.

Eric B. Lindgren, Licensed Land Surveyor
Minnesota License No. 48176

STATE OF MINNESOTA
COUNTY OF _____
This instrument was acknowledged before me this _____ day of _____, 20____ by Eric B. Lindgren.

Notary Public, _____ County, Minnesota
My Commission Expires _____

CITY COUNCIL, CITY OF BLAINE, MINNESOTA
This plat of WESTON WOODS ON RICE CREEK 2ND ADDITION was approved and accepted by the City Council of the City of Blaine, Minnesota at a regular meeting thereof held this _____ day of _____, 20____ and said plat is in compliance with the provisions of Minnesota Statutes, Section 505.03, Subd. 2.

CITY COUNCIL, CITY OF BLAINE, MINNESOTA

By _____ Mayor
By _____ Clerk

ANOKA COUNTY SURVEYOR
I hereby certify that in accordance with Minnesota Statutes, Section 505.021, Subd. 11, this plat has been reviewed and approved this _____ day of _____, 20____.

By _____
Larry D. Holm
Anoka County Surveyor

ANOKA COUNTY AUDITOR/TREASURER
Pursuant to Minnesota Statutes, Section 505.021, Subd. 9, taxes payable in the year 20____ on the land hereinbefore described have been paid. Also, pursuant to Minnesota Statutes, Section 272.12, there are no delinquent taxes and transfer entered this _____ day of _____, 20____.

Property Tax Administrator
By _____ Deputy

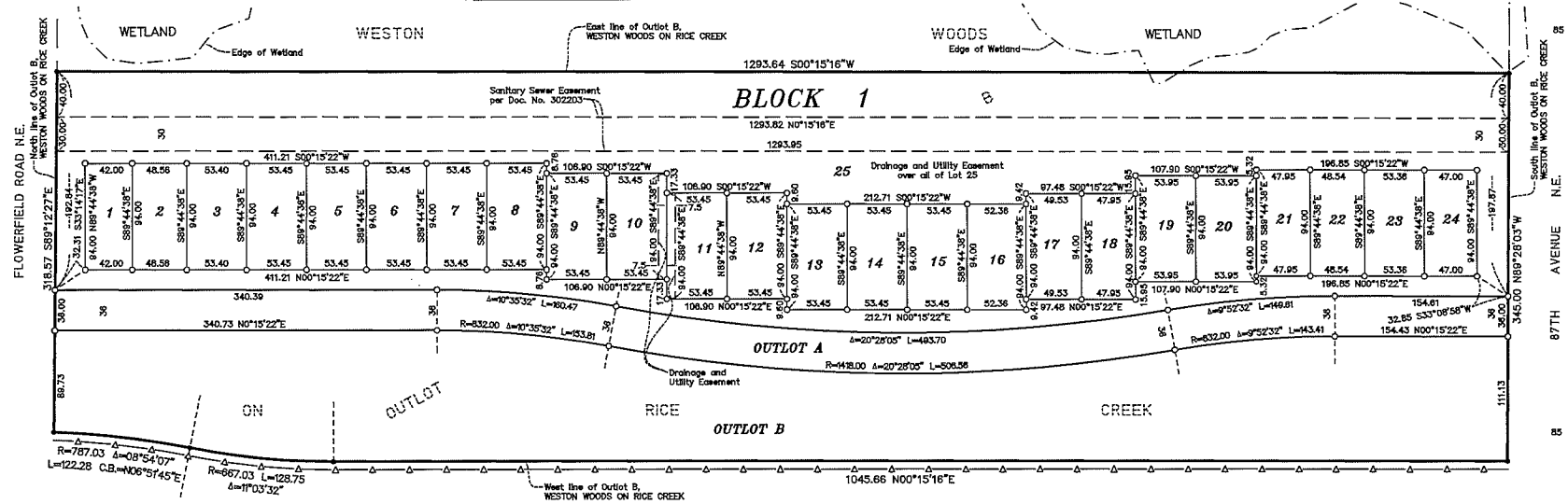
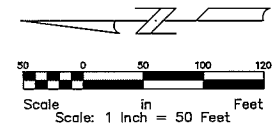
ANOKA COUNTY RECORDER/REGISTRAR OF TITLES
I hereby certify that this plat of WESTON WOODS ON RICE CREEK 2ND ADDITION was filed in the office of the County Recorder/Registrar of Titles for public record on this _____ day of _____, 20____ at _____ o'clock _____ M, and was duly recorded in Book _____ Page _____ as Document Number _____.

County Recorder/Registrar of Titles
By _____ Deputy

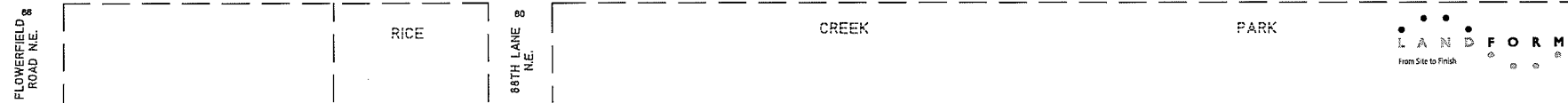
Denotes Right of Access dedicated to Anoka County
Wetland delineated by Kjelhaug Environmental in October 2013.

Denotes 1/2 inch iron pipe monument found.
Denotes 1/2 inch by 14 inch iron pipe monument set and marked by License No. 48176.

For the purpose of this plat the East line of Outlot B, WESTON WOODS ON RICE CREEK has an assumed bearing of S00°15'16"W.



LEXINGTON AVENUE N.E. (COUNTY STATE AID HIGHWAY NO. 17)
ANOKA COUNTY HIGHWAY RIGHT OF WAY PLAT NO. 57



LAND FORM
From Site to Finish