

Case File No. 19-0001

New Creations Childcare & Learning Center

Blaine Planning Department / 10801 Town Square Dr NE / Blaine, MN 55449 / (763) 785-6180





January 1, 2019

New Creations was founded in 2011 as a way of providing quality, affordable, Christ-centered, child care to our community. The early childhood education field is different from other businesses, and we understand that. We don't "make" a product. We "are" our product. Our success depends on how we treat our community. At New Creations we take great pride in creating a foundation of lifelong learning for each child. We have 8 additional locations in the Twin Cities area including Andover, Blaine, Big Lake, Brooklyn Park, Crocus Hill, Lino Lakes, Maple Grove and Ramsey. Each location has a current enrollment of between 60 and 120 children.

For our newest location, located in the former UFC gym building, we will have 2 infant classrooms (24 infants, ages 6 weeks to 14 months), 2 toddler classrooms (42 toddlers, ages 15 months to 36 months), and 3 preschool classrooms (60 preschoolers, ages 3 years and older). This center will also include an indoor large motor area, library, indoor and outdoor play areas, lactation room for nursing moms, warming kitchen for our catered meals as well as a staff lounge. We also anticipate employing between 20-30 people at any given time.

Our nutrition program is a catered meal program that is delivered hot daily to the building just prior to serving. The food temperature will be maintained with counter top steam trays and then the food will be plated and delivered to the classrooms from the designated warming kitchen. We will not be cooking food at this location. Kitchen will include refrigerator, freezer, countertop steam tray as well as all required sinks, drains and countertops.

To address the fenced in area: The HVAC on the east side of the building would only be accessed by the children in the case of an emergency evacuation and the fencing enclosing this area is only an extra precaution. As for the transformer on the North end of the building that lies within the designated play area, this will have fencing with locked access gates surrounding it.

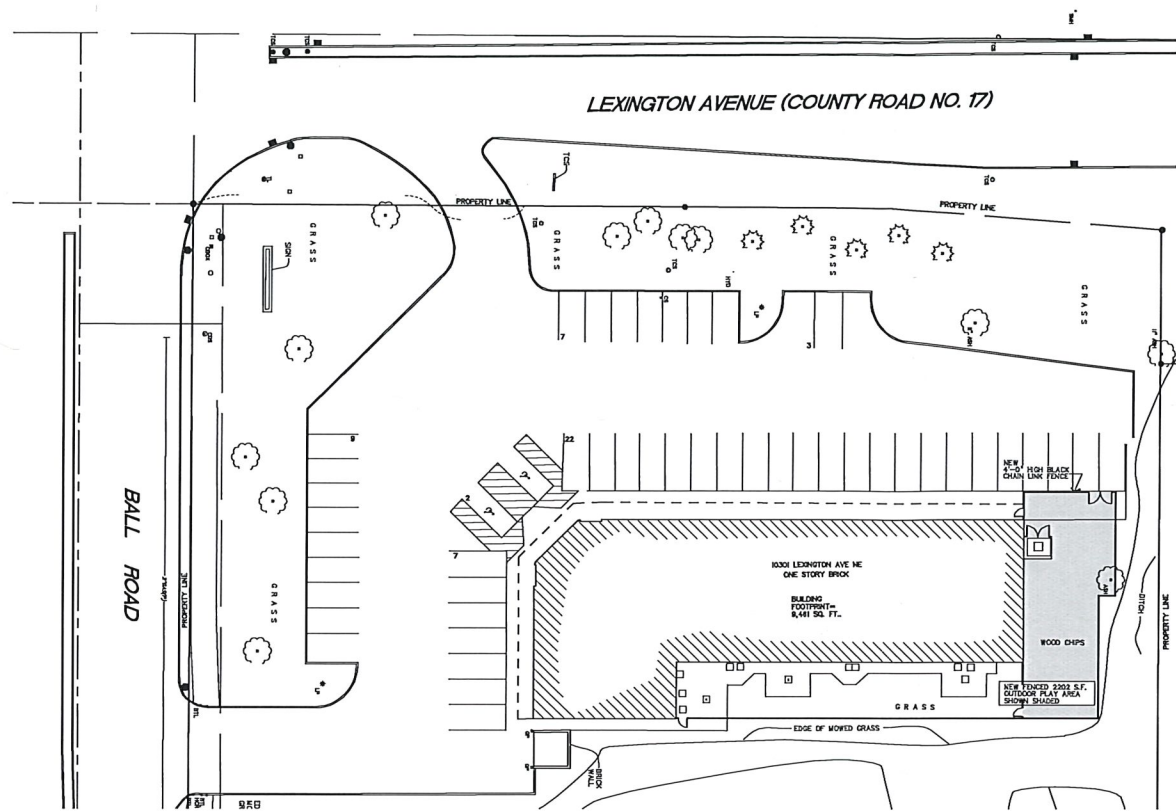
Our business model will continue to be to offer educational focused child care at an affordable tuition rate. We strive to provide a family atmosphere for not only our clients but also our staff.

We anticipate this center to begin renovations as soon as the approvals have been given and open for children July 1, 2019.

Sincerely,

New Creations Child Care and Learning Center

12267 Aberdeen St NE, Blaine, MN 55449



PROPOSED BUILD OUT
FOR:
NEW CREATIONS DAYCARE
10301 LEXINGTON AVE N.E.
Blaine, MN

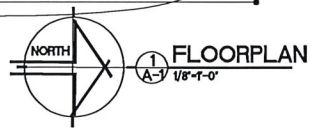
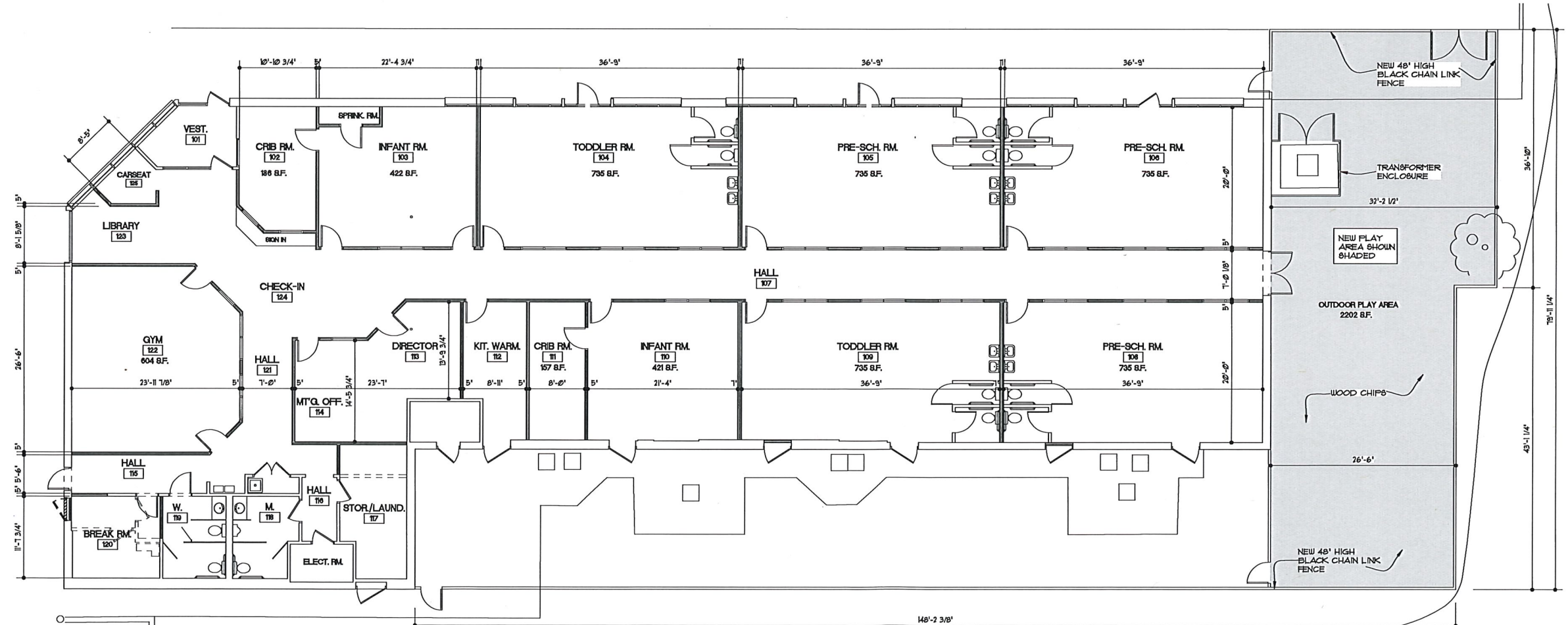
PLAN REVIEW
2015 MN STATE BUILDING CODE

FULLY SPRINKLED
CONSTRUCTION TYPE 2B
OCCUPANCY I-4

PARKING
PARKING REQUIRED
1 SPACE/300 S.F. 9461/300 = 32 SPACES
PARKING PROVIDED 30 SPACES
HDCP SPACES REQUIRED 2 SPACES
HDCP SPACES PROVIDED 2 SPACES

PROJECT OVERVIEW

- RENOVATE AN EXISTING ONE STORY 9,461 S.F. STRUCTURE FOR A DAYCARE CENTER
- CONSTRUCT A NEW 48' HIGH FENCED 2202 S.F. OUTDOOR PLAY AREA



REVISION #1 - REVISED SIZE OF EXT. PLAY AREA

Revisions	No.	Date
1	1	12-15-19

Date	1-02-19
Comm. No.	00519
Drawn By	Prp
Checked By	K.L.J.

I hereby certify that this plan, specification, direct supervision and that I, as a duly licensed professional engineer under the laws of the STATE OF MINNESOTA.

DATE: 12/15/19
SIGNATURE: [Signature]
REG. NO.: 02373

PROPOSED BUILD OUT FOR:
NEW CREATIONS DAYCARE
10301 LEXINGTON AVE NE
BLAINE, Minnesota

ARCHITECTS INC.
128 VICTORIA STR. N. ST. PAUL, MN 55117
riparchitects@aol.com
PHONE: (651) 853-7887
CELL: (612) 888-7804

