

**FIRST FLOOR PLAN**

SCALE: 1/4" = 1' - 0" 1321 SQ. FT.

HOUSE = 2628 SQUARE FEET  
 GARAGE = 700 SQUARE FEET  
 HOUSE EXT. STUDS = 2X4 - 16" O.C.  
 HOUSE INT. STUDS = 2X4 - 18" O.C.  
 GARAGE STUDS = 2X4 - 16" O.C.

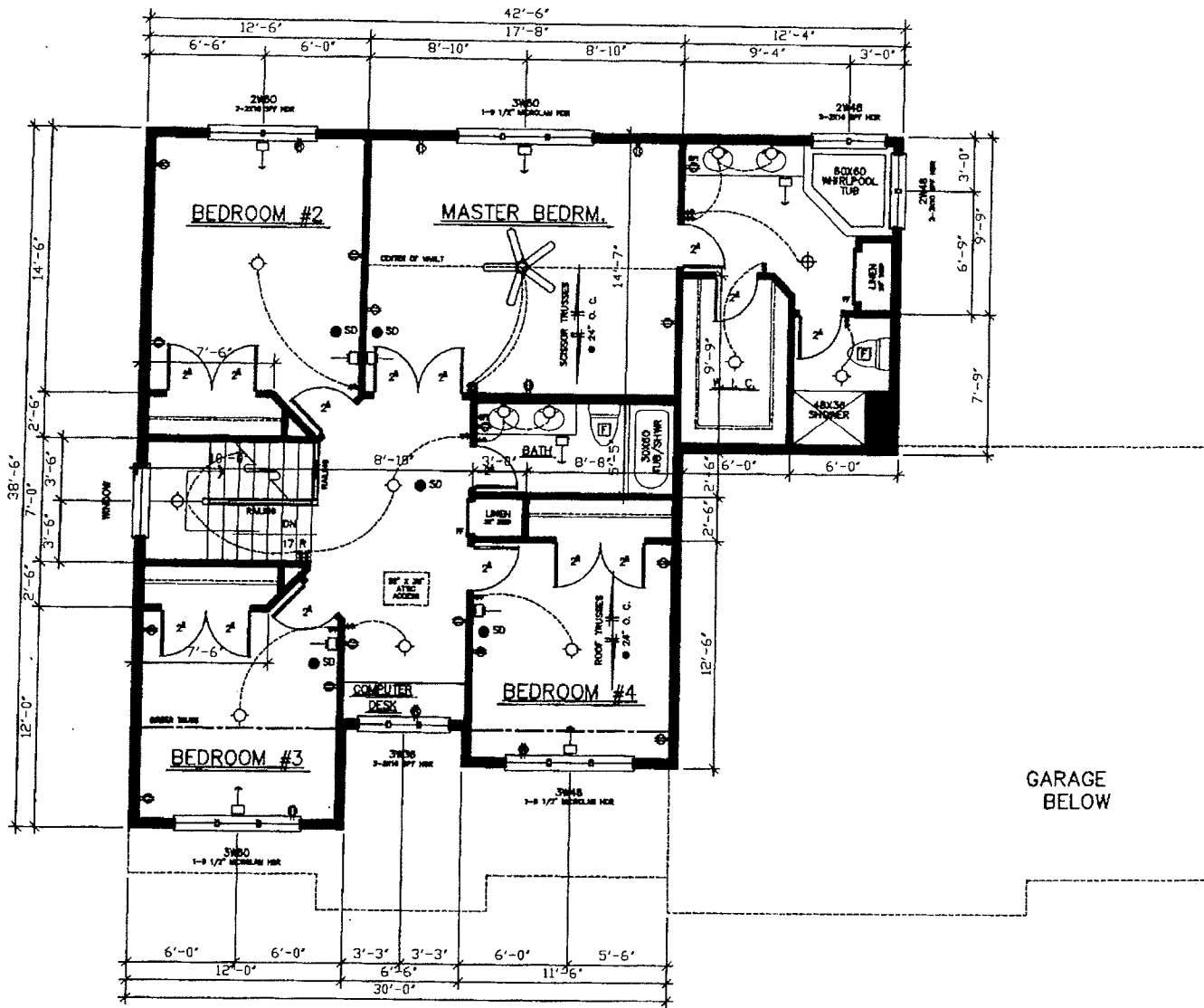
- VERIFY FLOOR AND ROOF SYSTEMS WITH MANUFACTURER
- VERIFY ALL HEADER/BEAM REQUIREMENTS WITH TRUSS MANUFACTURER

DATE:  
5/7/2012

VERIFY ALL DIMENSIONS:  
 Although every possible effort is made to insure the accuracy of dimensions, the contractor is responsible to check and confirm all rough openings and locations before performing the labor. The laborer is responsible for using proper and accepted construction techniques for standard settings not shown on drawings. Do not make drawings.

**S W WOLD**  
 HANNAH2/BLAINE MODEL

PAGE:  
2 of 5



**SECOND FLOOR PLAN**

SCALE: 1/4" = 1'-0" 1307 SQ. FT.

- VERIFY FLOOR AND ROOF SYSTEMS WITH MANUFACTURER
- VERIFY ALL HEADER/BREAM REQUIREMENTS WITH TRUSS MANUFACTURER

PAGE:

3 OF 5

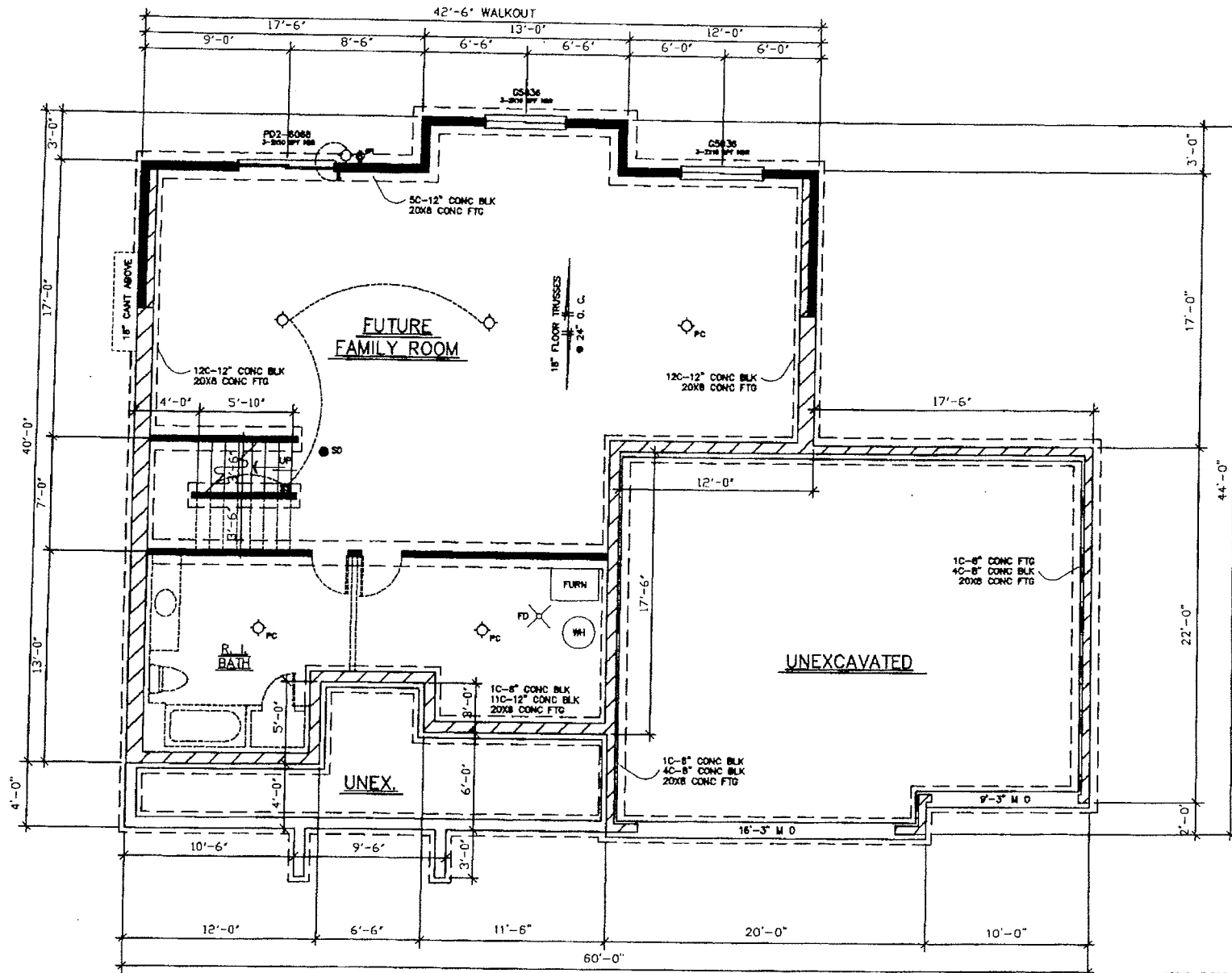
**S W WOLD**  
HANNAH2/BLAINE MODEL

VERIFY ALL DIMENSIONS:

For the effort is made to insure the accuracy of dimensions and quantities for the above information. The contractor shall confirm all rough openings and other dimensions for accuracy. The contractor performing the labor is responsible for using proper and accepted construction techniques for standard settings not shown on drawings. Do not scale drawing.

DATE:

5/9/2012



**FOUNDATION PLAN**

SCALE: 1/4" = 1'-0"

- VERIFY FLOOR AND ROOF SYSTEMS WITH MANUFACTURER
- VERIFY ALL HEADER/BEAM REQUIREMENTS WITH TRUSS MANUFACTURER

DATE:  
5/9/2013

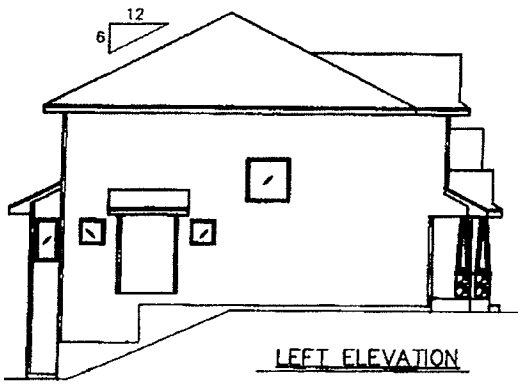
VERIFY ALL DIMENSIONS:  
Although every possible effort is made to insure the accuracy of dimensions and quantities, it is the contractor's responsibility to check and confirm all dimensions and quantities for accuracy. The individual performing the labor is responsible for using proper measuring techniques for standard writings not shown on drawings. Do not scale drawings.

**S W WOLD**  
HANNAH2/BLAINE MODEL

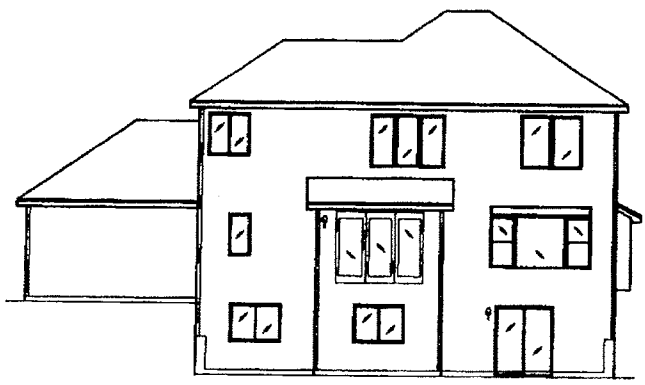
PAGE:  
4 of 5

L6 B1 Gw2

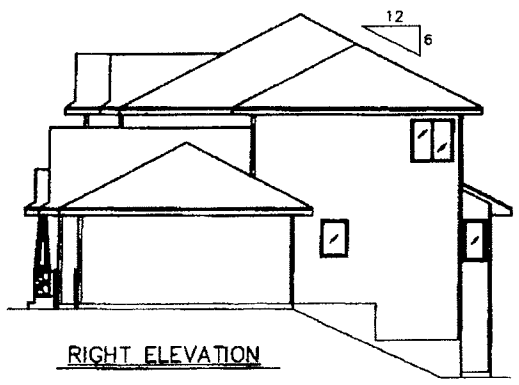
Example  
of acceptable  
Two-story



LEFT ELEVATION



REAR ELEVATION  
SCALE: 1/8" = 1'-0"



RIGHT ELEVATION



FRONT ELEVATION  
SCALE: 1/4" = 1'-0"

Hardi-board w/ stone  
on front  
.42 gauge vinyl  
on sides

DATE:  
4/4/2012

VERIFY ALL DIMENSIONS:  
made to insure the accuracy of dimensions  
Although the contractor is responsible to check and confirm all  
rough openings and other dimensions for accuracy. The individual performing  
the labor is responsible for using proper and accepted construction  
techniques for standard building not shown on drawings. Do not alter drawing.

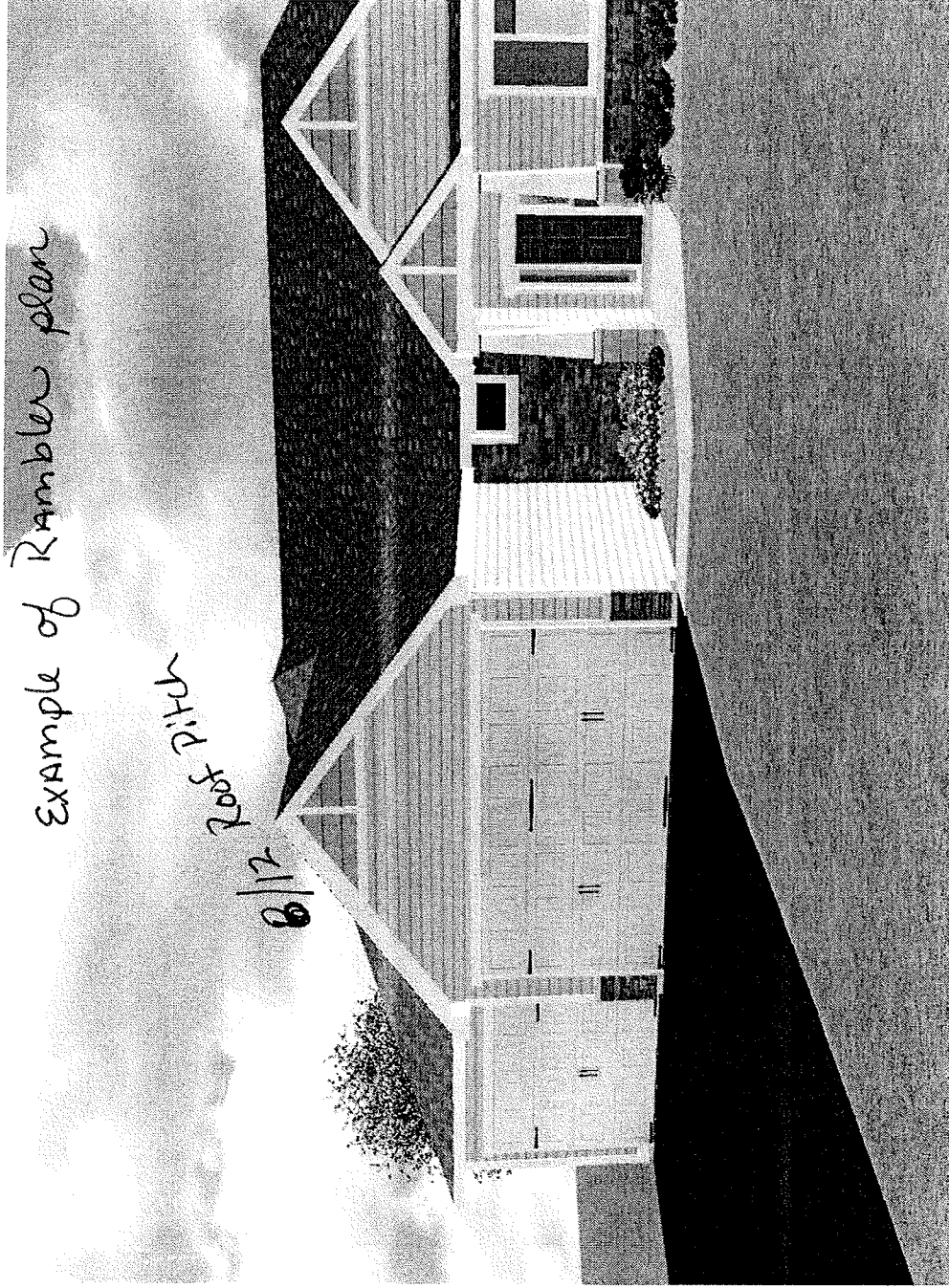
S W WOLD  
HANNAH2/BLAINE MODEL

PAGE:  
1 of 5

Example of Rambler plan

8/12 Roof Pitch

8/12



2,000 sq Rambler (or better)

8/12 Roof pitch for gables facing the street

Hardi Siding (or comparable) on front w/ stone or brick

Sides of home options { Vinyl - .42 gauge or better

{ Steel

{ Aluminum - .24 gauge or better