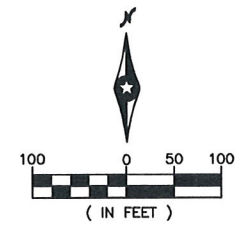
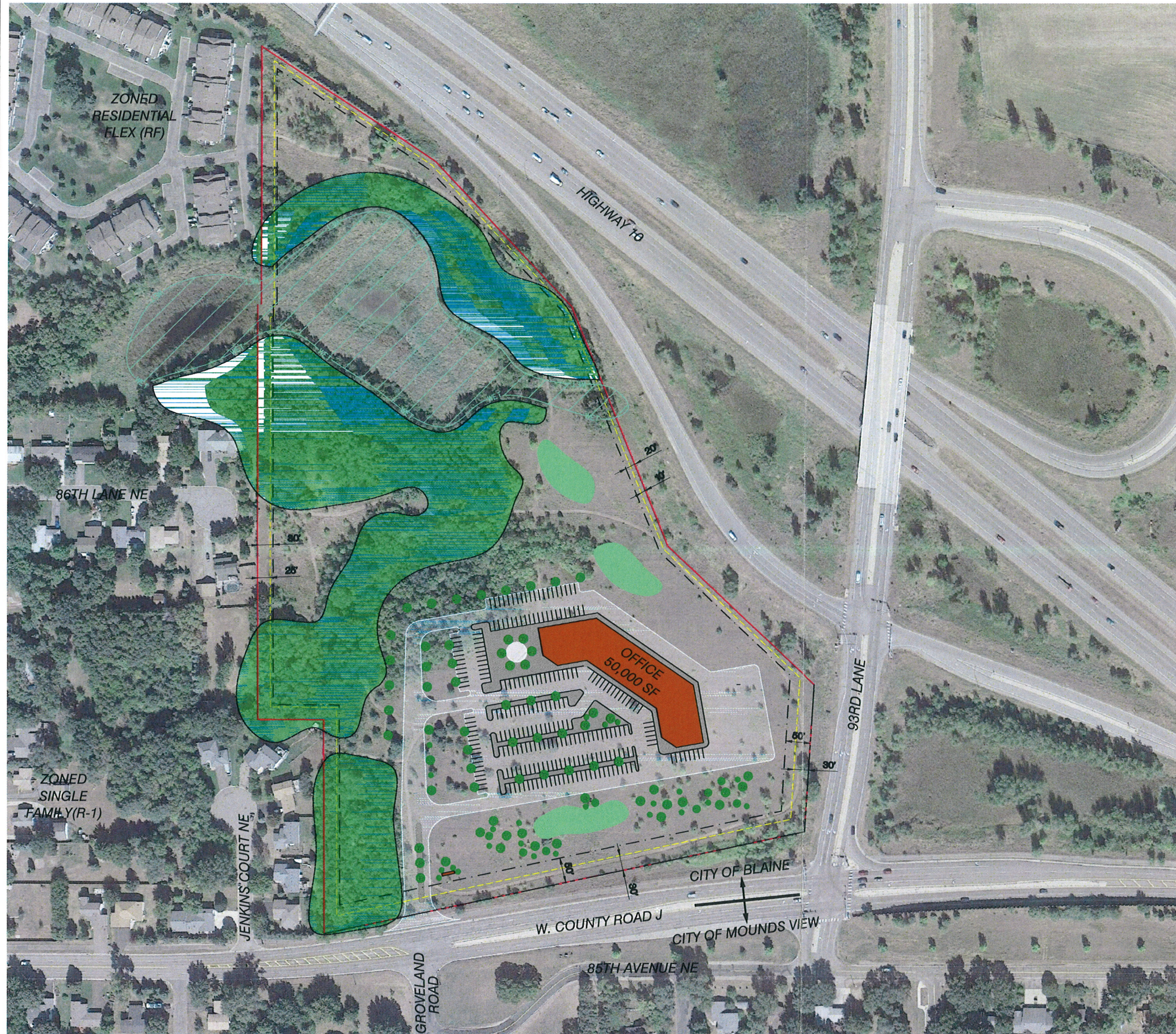


**Case File No. 15-0046**





S:\KO\W\WAC00\124476\Anoka\51-drawings\65-Aviation\ANE-124476\_Figures.dwg 4/2/2014 11:52 AM ireid



- LEGEND:**
- PROPOSED PARCEL BOUNDARY
  - - - - PROPOSED BUILDING SETBACK LINES
  - - - - PROPOSED PAVED SURFACES SETBACK LINES
  - - - - EXISTING RIGHT OF WAY
  - EXISTING WETLAND - NOT DELINEATED
  - CONCEPTUAL BUILDING LOCATIONS
  - CONCEPTUAL PAVED SURFACES
  - CONCEPTUAL WALKS, MEDIANS, PATIOS
  - CONCEPTUAL STORM WATER INFILTRATION
  - CONCEPTUAL VEGETATION TO REMAIN
  - CONCEPTUAL VEGETATION SCREENING

**PARCEL 60**  
 TOTAL AREA = 26.98 ACRES

EXISTING ZONING CLASSIFICATION = AIRPORT  
 PROPOSED ZONING = REGIONAL COMMERCIAL (B-3)  
 CONCEPTUAL TOTAL STRUCTURE AREA = 50,000 SF

THIS PARCEL UNDERLIES FAR PART 77  
 HORIZONTAL SURFACE  
 FROM ELEV. 1,062' MSL

3035 WYNAS CENTER DR  
 ST PAUL, MN 55110  
 PHONE: 651.402.2000  
 FAX: 651.402.2100  
 WWW.SEH.COM

6040 SOUTH 28TH AVENUE  
 ANNAPOLIS, MD 20680  
 WWW.METROPOLSPORTS.ORG

ANOKA COUNTY-BLAINE AIRPORT  
 COMMERCIAL DEVELOPMENT  
 BLAINE, MN

MARK	DATE	REVISIONS	DESCRIPTION

SEH FILE NO.	MAC-124476	DESIGNED BY	MDZ	LRR
MAC PROJECT NO.	110-5-XXX	DRAWN BY	4-4-14	
ISSUE DATE				

Short Elliott Hendrickson, Inc. © (SEH)  
 © 2004 Short Elliott Hendrickson, Inc.

SHEET TITLE  
 PARCEL 60  
 CONCEPT 1  
 SITE VIEW

SHEET  
 FIGURE  
 60.1A