



NPDES Public Meeting

CITY OF BLAINE

PRESENTED BY: REBECCA HAUG

WATER RESOURCES MANAGER

3/15/2021

Introduction



▶ Stormwater

- ▶ means precipitation runoff, stormwater runoff, snow melt runoff and any other surface runoff and drainage

▶ Federal and State Mandates

- ▶ The Municipal Separate Storm Sewer System (MS4) general permit is mandated by the federal regulations under the **Clean Water Act** and administered by the **MPCA**



Blaine's NPDES Program

- ▶ Permitted since 2003
- ▶ Six main points referred to as Minimum Control Measures (MCM):
 1. Construction Site Management
 2. Elimination of Illicit Discharges
 3. Pollution Prevention/Good Housekeeping
 4. Post Construction Best Management Practices
 5. Public Education
 6. Public Participation



MCM 1 - Public Education and Outreach

- ❑ Distribute educational materials and perform outreach activities to inform the citizens on the impacts of stormwater runoff
 - City newsletter
 - City website
 - Utilize materials and programs from watershed districts
 - Partnerships with:
 - Anoka Conservation District
 - Metro Watershed Partners
 - Minnesota Cities Stormwater Coalition
 - Anoka County Water Resource Task Force
 - St. Cloud State University

MCM 2 - Public Participation/Involvement

- ❑ Provide opportunities for citizens to participate in program development and implementation
 - Annual Meetings
 - Public Meetings on stormwater projects such as the Pleasure Creek Biochar/Iron Enhanced Sand Filter
 - Looking for additional ways to involve the public



MCM 3 - Illicit Discharge Detection and Elimination

- ❑ Non-stormwater discharges and illegal dumping to the storm sewer system
 - Oil, fuel, chemical spills; excess irrigation, etc.
 - Discharges from business and industrial locations
 - Dumping of household waste (paint, cleaners, etc.)
- ❑ Create map of storm sewer system – ponds, pipes, ditches, outfalls, wetlands, structural devices
- ❑ Develop, implement and enforce a program of detecting and eliminating illicit discharges to the system

MCM 4 - Construction Site Stormwater Control

- ❑ Develop, implement and enforce an Erosion and Sediment Control program for all construction activities that disturb one (1) acre or more
 - Bi-annual builder meetings in cooperation with Coon Creek Watershed District
 - Email reminders to builders
 - Year round inspection of construction sites – coordinated with the watershed districts (Rice Creek WD & Coon Creek WD)



MCM 5 - Post Construction Stormwater Runoff

- Develop, implement and enforce a program to address discharge of post-construction stormwater runoff from new development and re-development sites
 - City and watershed district stormwater management ordinances requiring:
 - Ponds
 - Structural devices
 - Rain gardens
 - Other best management practices (BMP)



MCM 6 - Pollution Prevention/Good Housekeeping

- ❑ Develop and implement a program to reduce and prevent pollutant runoff from municipal operations
 - ❑ MS4 Activities
 - ❑ Inspect all structural devices annually
 - ❑ Inspect 20% of outfalls and stormwater ponds annually
 - ❑ Maintenance and repairs based on inspections
 - ❑ General Program Activities
 - ❑ Staff training
 - ❑ Park and open space maintenance
 - ❑ Fleet and building maintenance
 - ❑ Regular street sweeping
 - ❑ Reduce pesticide use
 - ❑ Hazardous material management

Inspections and Maintenance

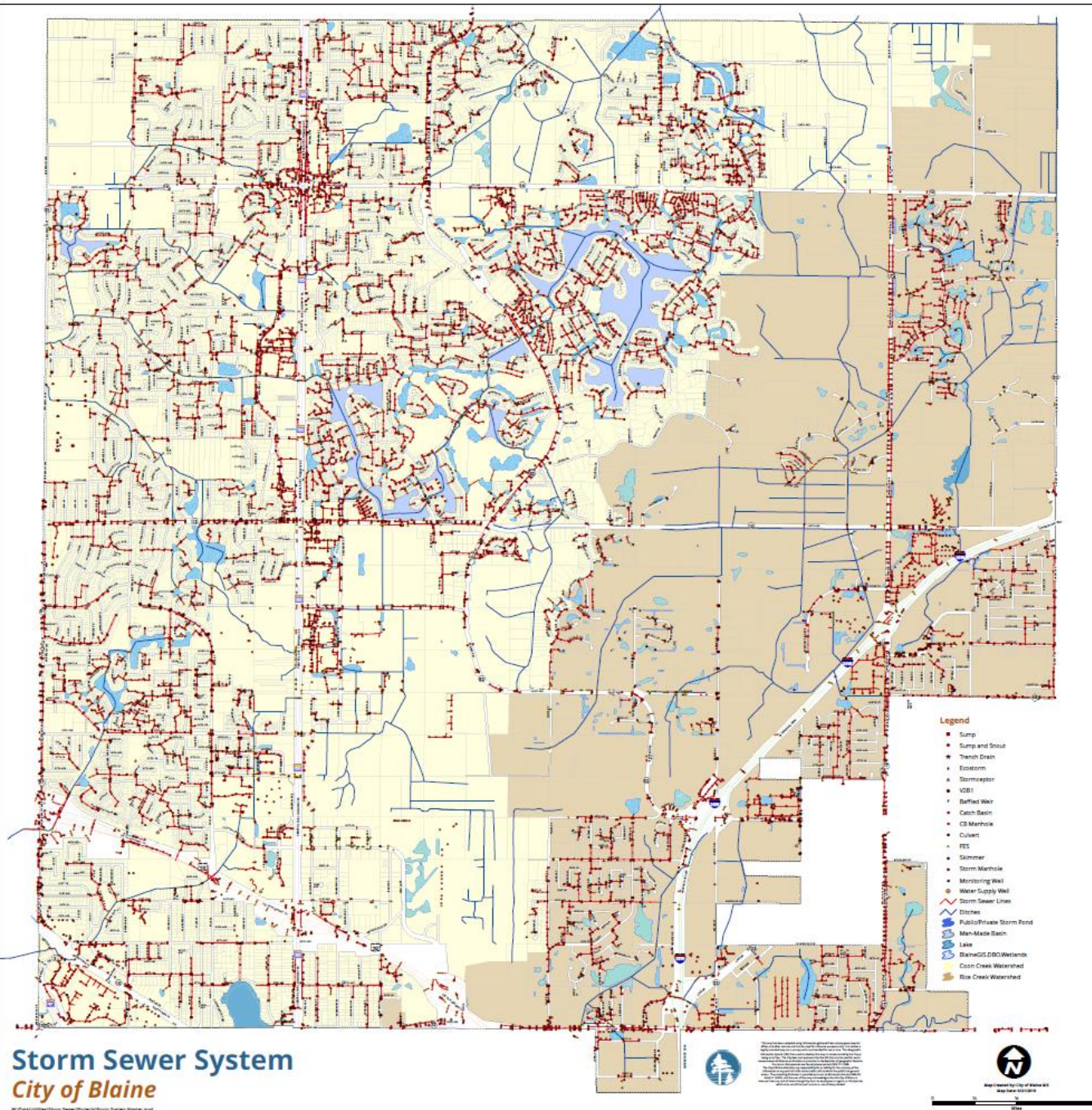
- ▶ Complex system - designed to collect, store and treat stormwater
 - ▶ 111 miles of ditch (~48 private/ ~63 public)
 - ▶ More than 10,000 inlet structures (catch basins, cb manholes, manholes)
 - ▶ More than 2,800 outlets (FES and outfalls)
 - ▶ More than 300 skimmers, baffled weirs, SAFL baffles, and preservers
 - ▶ 215 miles underground pipe
 - ▶ ~700 man-made ponds
 - ▶ ~100 private/ ~600 public



MCM 6 - Pollution Prevention/Good Housekeeping

- ❑ Develop and implement a program to reduce and prevent pollutant runoff from municipal operations
 - ❑ MS4 Activities
 - ❑ Inspect all structural devices annually
 - ❑ Inspect 20% of outfalls and stormwater ponds annually
 - ❑ Maintenance and repairs based on inspections
 - ❑ General Program Activities
 - ❑ Staff training
 - ❑ Park and open space maintenance
 - ❑ Fleet and building maintenance
 - ❑ Regular street sweeping
 - ❑ Reduce pesticide use
 - ❑ Hazardous material management





City Compliance - 2020

- ❑ Submitted 2020 annual report on time (June 30)
- ❑ Inspections on outfalls and ponds
- ❑ Newsletter articles
- ❑ Staff training - seminars and conferences
- ❑ Continued updates of map of storm sewer system
- ❑ Constructed building for street sweepings sorted through Trommel Screen
- ❑ Constructed Biochar/Iron Enhanced Sand Filter system at Pleasure Creek to treat phosphorus and e.coli
- ❑ Created Stormwater Story Map through GIS

2021 Program Plan

- ❑ Submit MS4 permit by April 15, 2021 to cover next 5 years
- ❑ Submit annual 2021 report on time
- ❑ Update and improve web site information
- ❑ Review and update of city ordinance
- ❑ Continue promoting Adopt-a-Drain program
- ❑ Improve inspections program
- ❑ Update records/maps to reflect changes to system
 - ❑ Implement new stormwater system software with 2nd Nature
- ❑ Continue inspections and repair of storm sewer system
- ❑ Continue routine maintenance (street sweeping, pond maintenance, pond surveys, etc.)
- ❑ Continue partnership with CCWD, RCWD and ACD for education and outreach

Public Comment on SWPPP

- ❑ Accept written and oral comments at public meeting
 - Comments are made part of the official record
- ❑ Follow-up
 - City reviews comments and prepares “Response to Comments” (RTC)
 - City prepares “Record of Decision” (ROD) to justify “Change” or “No Change” to the SWPPP
 - SWPPP revised as needed
 - SWPPP and annual report are filed with the MPCA

The background features a series of overlapping, semi-transparent geometric shapes, primarily triangles, in shades of blue and orange. These shapes are positioned on the right side of the slide, creating a modern, abstract design.

Questions, Comments,
Suggestions