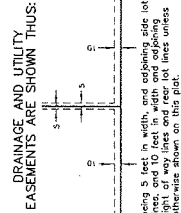
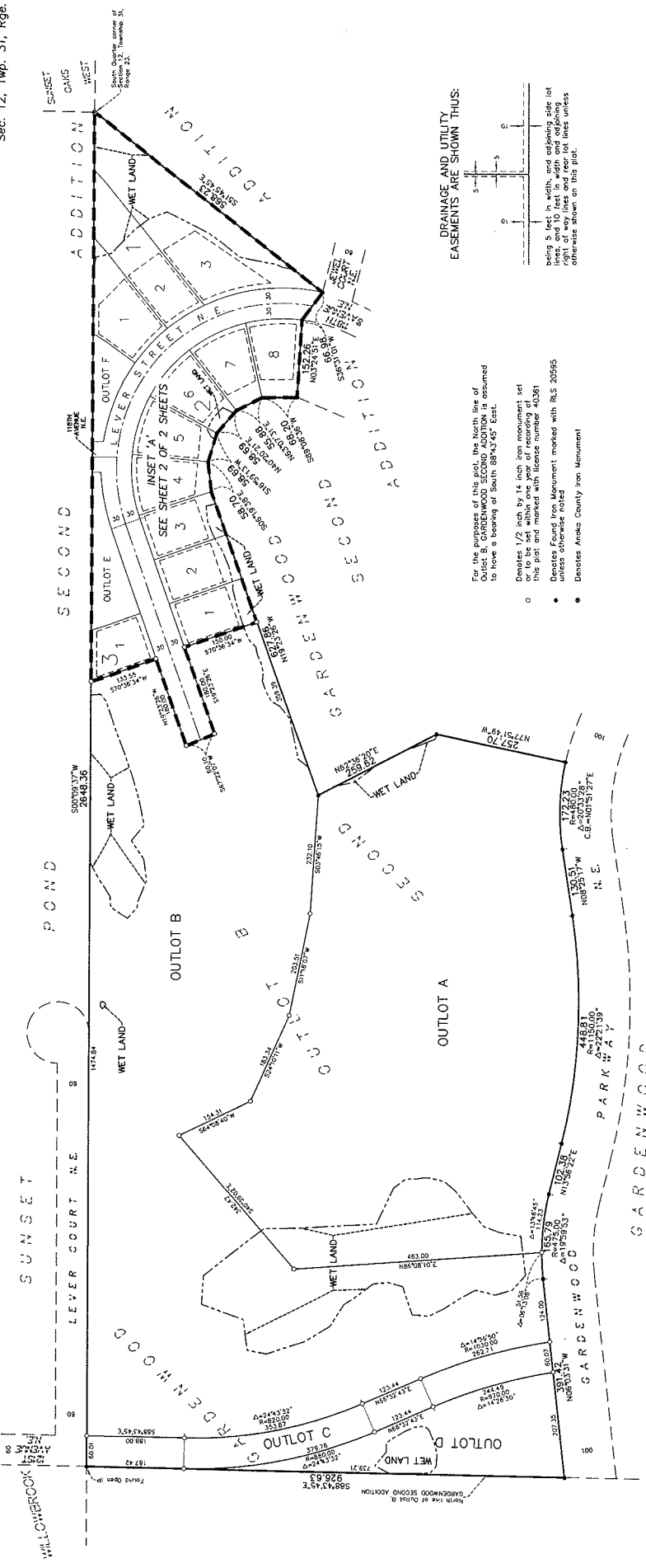


Case File No. 12-0027



WOODLAND VILLAGE 3RD ADDITION

CITY OF BLAINE
COUNTY OF ANOKKA
Sec. 12, Twp. 31, Rge. 23



- For the purposes of this plat, the North line of
Outlot B, GARDENWOOD SECOND ADDITION is assumed
to have a bearing of South 88°43'45" East.
- Denotes 1/2 inch by 1/4 inch iron monument set
in this plat and marked with license number 40391
 - Denotes Found Iron Monument marked with RLS 20595
unless otherwise noted
 - Denotes Anoka County Iron Monument

STATE OF MINNESOTA
COUNTY OF ANOKKA

This instrument was acknowledged before me this _____ day of _____, 20____, by Bryan D. Westlund, President of Woodland Development Corporation, a Minnesota corporation, in behalf of the corporation.

History Public, _____
My commission expires _____

STATE OF MINNESOTA
COUNTY OF ANOKKA

This instrument was acknowledged before me on _____ day of _____, 20____, by Thomas R. Southworth, Chief Credit Officer, Village Bank, a Minnesota corporation, on behalf of the corporation.

History Public, _____
My commission expires _____

STATE OF MINNESOTA
COUNTY OF ANOKKA

This instrument was acknowledged before me on _____ day of _____, 20____, by Thomas R. Southworth, Chief Credit Officer of Village Bank, a Minnesota corporation, on behalf of the corporation.

History Public, _____
My commission expires _____

STATE OF MINNESOTA
COUNTY OF ANOKKA

This instrument was acknowledged before me on _____ day of _____, 20____, by Thomas R. Southworth, Chief Credit Officer of Village Bank, a Minnesota corporation, on behalf of the corporation.

History Public, _____
My commission expires _____

STATE OF MINNESOTA
COUNTY OF ANOKKA

This instrument was acknowledged before me on _____ day of _____, 20____, by Thomas R. Southworth, Chief Credit Officer of Village Bank, a Minnesota corporation, on behalf of the corporation.

History Public, _____
My commission expires _____

STATE OF MINNESOTA
COUNTY OF ANOKKA

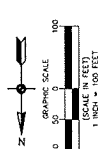
This instrument was acknowledged before me on _____ day of _____, 20____, by Thomas R. Southworth, Chief Credit Officer of Village Bank, a Minnesota corporation, on behalf of the corporation.

History Public, _____
My commission expires _____

STATE OF MINNESOTA
COUNTY OF ANOKKA

This instrument was acknowledged before me on _____ day of _____, 20____, by Thomas R. Southworth, Chief Credit Officer of Village Bank, a Minnesota corporation, on behalf of the corporation.

History Public, _____
My commission expires _____

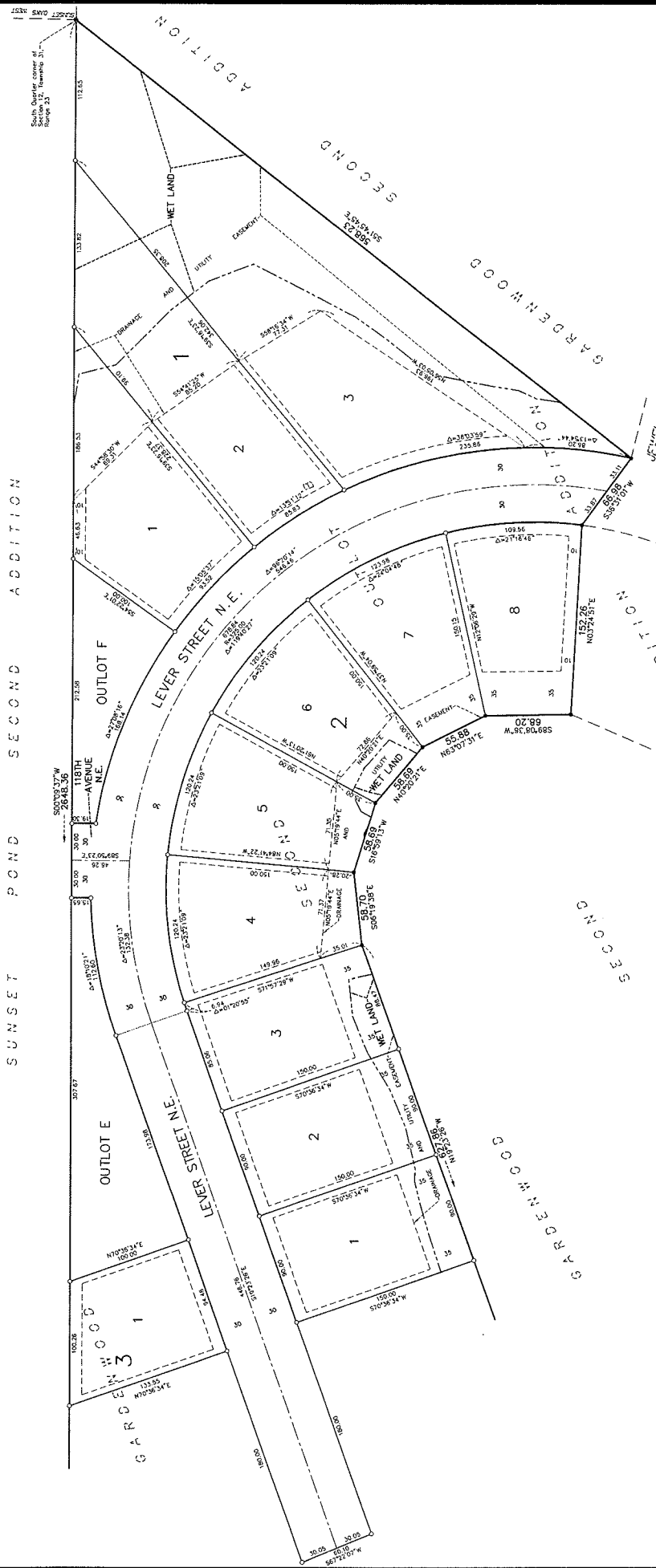


Carlson
McCain
ENVIRONMENTAL ENGINEERING SURVEYING

WOODLAND VILLAGE 3RD ADDITION

CITY OF BLAINE
 COUNTY OF ANOKA
 Sec. 12, Twp. 31, Rge. 23

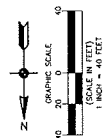
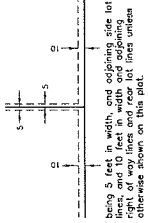
SUNSET POND SECOND ADDITION



For the purposes of this plat, the North line of Outlot B, GARDENWOOD SECOND ADDITION is assumed to have a bearing of South 88°34'5" East.

- Denotes 1/2 inch by 14 inch iron monument set on this plat and marked with license number 40361
- Denotes Found Iron Monument marked with R.S. 20595
- Denotes Anoka County Iron Monument

DRAINAGE AND UTILITY EASEMENTS ARE SHOWN THUS:



GRAPHIC SCALE
 0 20 40
 1 INCH = 40 FEET

