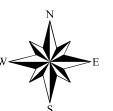
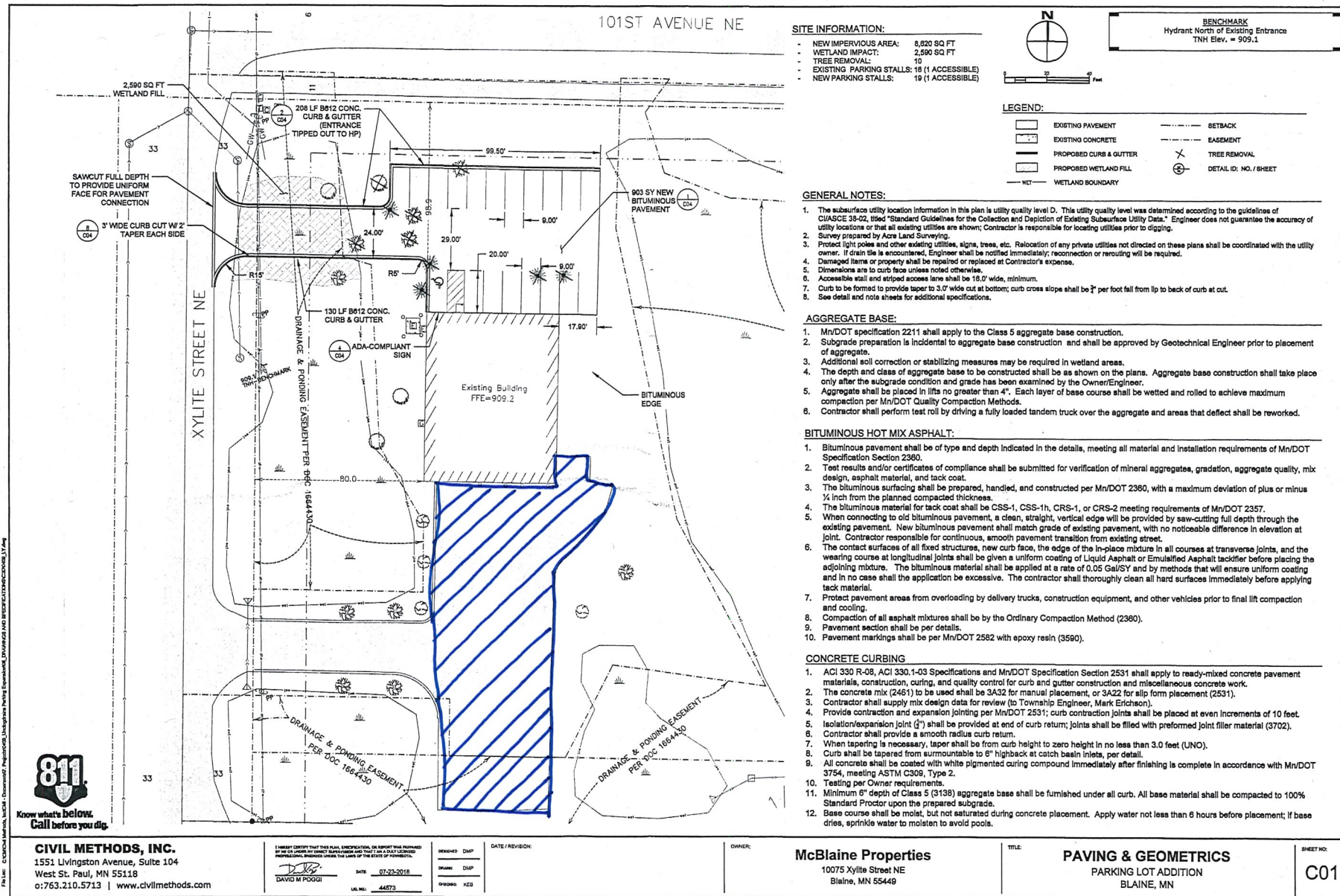


Case File No. 18-0063
McDonough Sewer Service

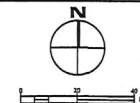
Blaine Planning Department / 10801 Town Square Dr NE / Blaine, MN 55449 / (763) 785-6180





SITE INFORMATION:

- NEW IMPERVIOUS AREA: 8,820 SQ FT
- WETLAND IMPACT: 2,590 SQ FT
- TREE REMOVAL: 10
- EXISTING PARKING STALLS: 18 (1 ACCESSIBLE)
- NEW PARKING STALLS: 19 (1 ACCESSIBLE)



BENCHMARK
Hydrant North of Existing Entrance
TNH Elev. = 909.1

LEGEND:

- | | | | |
|--|------------------------|--|------------------------|
| | EXISTING PAVEMENT | | SETBACK |
| | EXISTING CONCRETE | | EASEMENT |
| | PROPOSED CURB & GUTTER | | TREE REMOVAL |
| | PROPOSED WETLAND FILL | | DETAIL ID: NO. / SHEET |
| | WETLAND BOUNDARY | | |

GENERAL NOTES:

- The subsurface utility location information in this plan is utility quality level D. This utility quality level was determined according to the guidelines of C/ASCE 38-02, titled "Standard Guidelines for the Collection and Depiction of Existing Subsurface Utility Data." Engineer does not guarantee the accuracy of utility locations or that all existing utilities are shown; Contractor is responsible for locating utilities prior to digging.
- Survey prepared by Acres Land Surveying.
- Protect light poles and other existing utilities, signs, trees, etc. Relocation of any private utilities not directed on these plans shall be coordinated with the utility owner. If drain tile is encountered, Engineer shall be notified immediately; reconnection or rerouting will be required.
- Damaged items or property shall be repaired or replaced at Contractor's expense.
- Dimensions are to curb face unless noted otherwise.
- Accessible stall and striped access lane shall be 18.0' wide, minimum.
- Curb to be formed to provide taper to 3.0' wide cut at bottom; curb cross slope shall be 2" per foot fall from lip to back of curb at cut.
- See detail and note sheets for additional specifications.

AGGREGATE BASE:

- Mn/DOT specification 2211 shall apply to the Class 5 aggregate base construction.
- Subgrade preparation is incidental to aggregate base construction and shall be approved by Geotechnical Engineer prior to placement of aggregate.
- Additional soil correction or stabilizing measures may be required in wetland areas.
- The depth and class of aggregate base to be constructed shall be as shown on the plans. Aggregate base construction shall take place only after the subgrade condition and grade has been examined by the Owner/Engineer.
- Aggregate shall be placed in lifts no greater than 4". Each layer of base course shall be wetted and rolled to achieve maximum compaction per Mn/DOT Quality Compaction Methods.
- Contractor shall perform test roll by driving a fully loaded tandem truck over the aggregate and areas that deflect shall be reworked.

BITUMINOUS HOT MIX ASPHALT:

- Bituminous pavement shall be of type and depth indicated in the details, meeting all material and installation requirements of Mn/DOT Specification Section 2380.
- Test results and/or certificates of compliance shall be submitted for verification of mineral aggregates, gradation, aggregate quality, mix design, asphalt material, and tack coat.
- The bituminous surfacing shall be prepared, handled, and constructed per Mn/DOT 2380, with a maximum deviation of plus or minus 1/4 inch from the planned compacted thickness.
- The bituminous material for tack coat shall be CSS-1, CSS-1h, CRS-1, or CRS-2 meeting requirements of Mn/DOT 2357.
- When connecting to old bituminous pavement, a clean, straight, vertical edge will be provided by saw-cutting full depth through the existing pavement. New bituminous pavement shall match grade of existing pavement, with no noticeable difference in elevation at joint. Contractor responsible for continuous, smooth pavement transition from existing street.
- The contact surfaces of all fixed structures, new curb face, the edge of the in-place mixture in all courses at transverse joints, and the wearing course at longitudinal joints shall be given a uniform coating of Liquid Asphalt or Emulsified Asphalt tackifier before placing the adjoining mixture. The bituminous material shall be applied at a rate of 0.05 Gal/SY and by methods that will ensure uniform coating and in no case shall the application be excessive. The contractor shall thoroughly clean all hard surfaces immediately before applying tack material.
- Protect pavement areas from overloading by delivery trucks, construction equipment, and other vehicles prior to final lift compaction and cooling.
- Compaction of all asphalt mixtures shall be by the Ordinary Compaction Method (2380).
- Pavement section shall be per details.
- Pavement markings shall be per Mn/DOT 2582 with epoxy resin (3590).

CONCRETE CURBING

- ACI 330 R-08, ACI 330.1-03 Specifications and Mn/DOT Specification Section 2531 shall apply to ready-mixed concrete pavement materials, construction, curing, and quality control for curb and gutter construction and miscellaneous concrete work.
- The concrete mix (2461) to be used shall be 3A32 for manual placement, or 3A22 for slip form placement (2531).
- Contractor shall supply mix design data for review (to Township Engineer, Mark Erickson).
- Provide contraction and expansion jointing per Mn/DOT 2531; curb contraction joints shall be placed at even increments of 10 feet.
- Isolation/expansion joint (J₁) shall be provided at end of curb return; joints shall be filled with preformed joint filler material (3702).
- Contractor shall provide a smooth radius curb return.
- When tapering is necessary, taper shall be from curb height to zero height in no less than 3.0 feet (UNO).
- Curb shall be tapered from surmountable to 6" highback at catch basin inlets, per detail.
- All concrete shall be coated with white pigmented curing compound immediately after finishing is complete in accordance with Mn/DOT 3754, meeting ASTM C509, Type 2.
- Testing per Owner requirements.
- Minimum 6" depth of Class 5 (3138) aggregate base shall be furnished under all curb. All base material shall be compacted to 100% Standard Proctor upon the prepared subgrade.
- Base course shall be moist, but not saturated during concrete placement. Apply water not less than 6 hours before placement; if base dries, sprinkle water to moisten to avoid pools.

outside storage area

New office mezzanine is 18'9" x 23'7", 440 ft² of office space.

~~13'0" 43'0" 13'0"~~

14'2"

12'8"

14'2" OFFICE
168 ft²

BATH

7'11"

STAIRS

BATH

FUTURE HALL

3' HALL

14'2"

9'4"

Changing Area

Total 20' to

7'9"

23'7"

Post

NO WALL
OFFICE ABOVE

08.7.2019

To Whom it may concern,

Our intended use for this outside storage area is to park company vehicles and some flatbed trailers that we use. I would say 3-5 vehicles and 2-3 trailers overnight. Also, 6" corrugated hose that we use for our vacuum truck jobs. This comes in a rolled-up bundle that is about 5' in diameter. The most we would have at one time would be around 10-15 bundles.

Regards,

Randy Warner
651-436-3370
randy@unclogdrains.com

MCDONOUGH'S SEWER SERVICE

Tel 651-436-3370	10075 Xylite St NE	UNCLOGDRAINS.COM
Fax 651-436-1548	Blaine, MN 55449	WWW.UNCLOGDRAINS.COM

