

Case File No. 11-0043

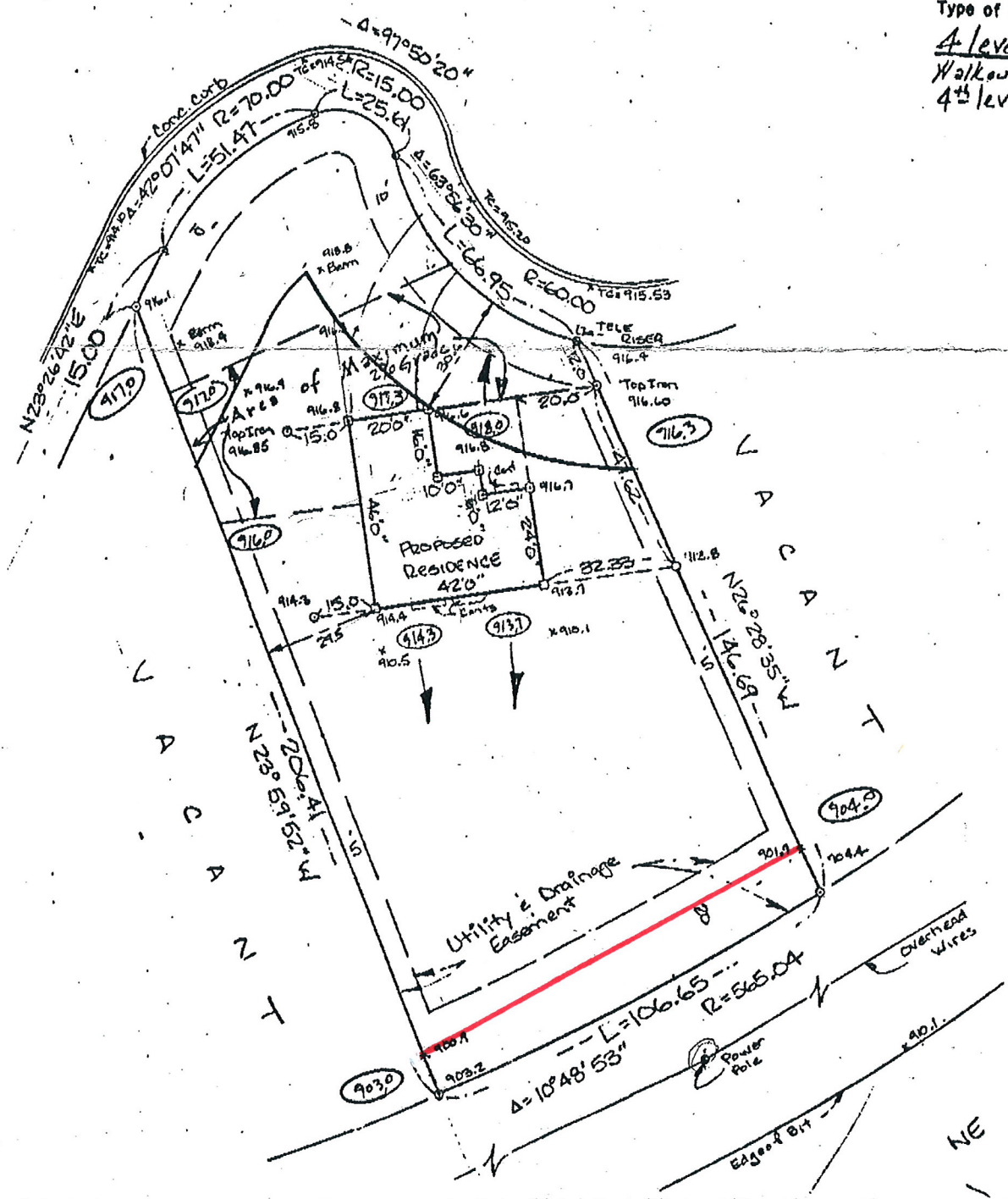


LOT SURVEYS CO., INC. TEL No. 560-3093  
 4, Township 31, Range 23,  
 Anoka County, Minnesota

Oct 16, 40 12:48 No. 005 P. 01

Denotes S  
918.7 Proposed  
918.2 Proposed  
910.7 Proposed  
 Type of Bu  
A level  
 Walkout  
 4<sup>th</sup> level

OWATONNA COURT

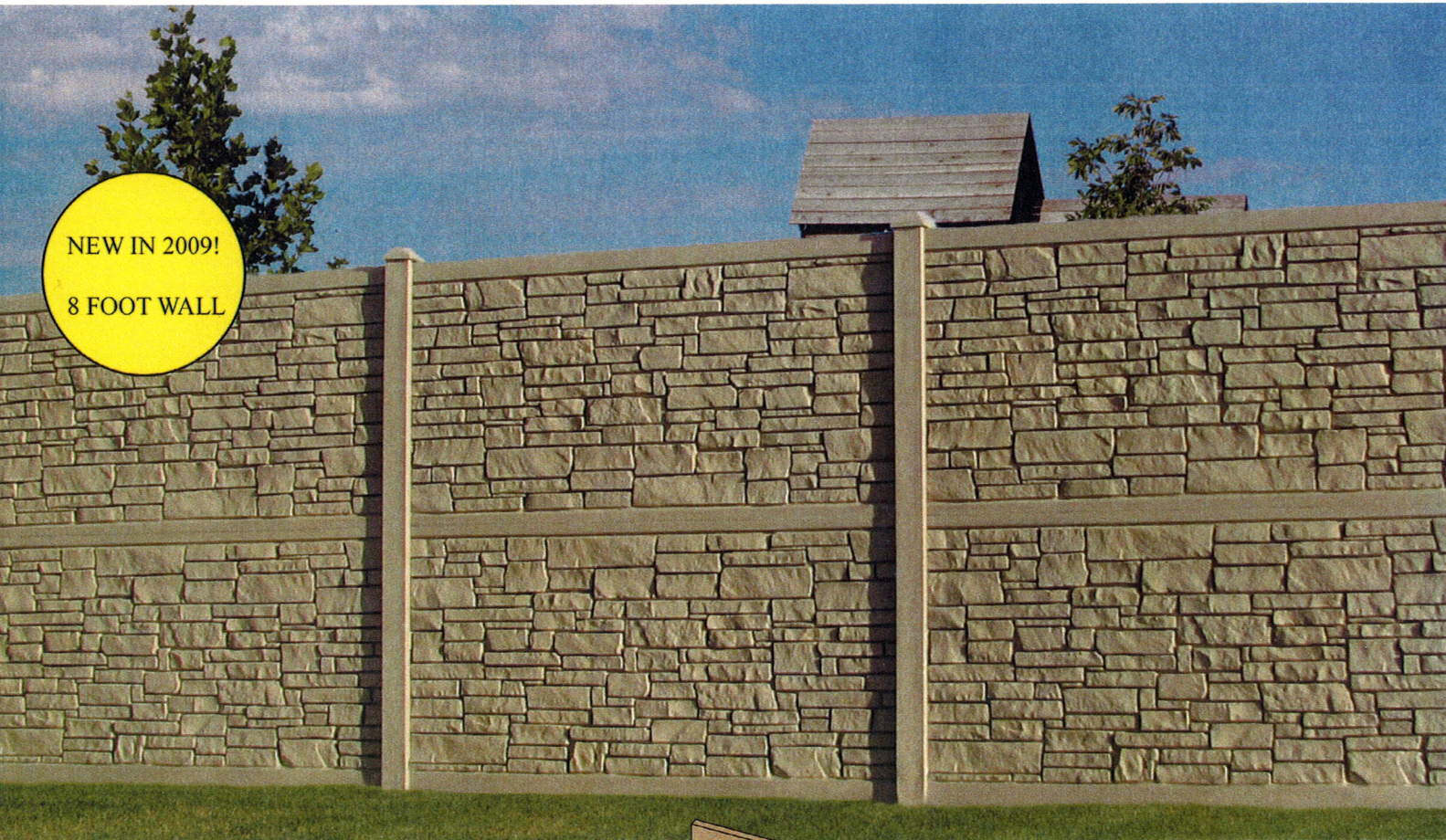




# The Sizes and Colors You Want

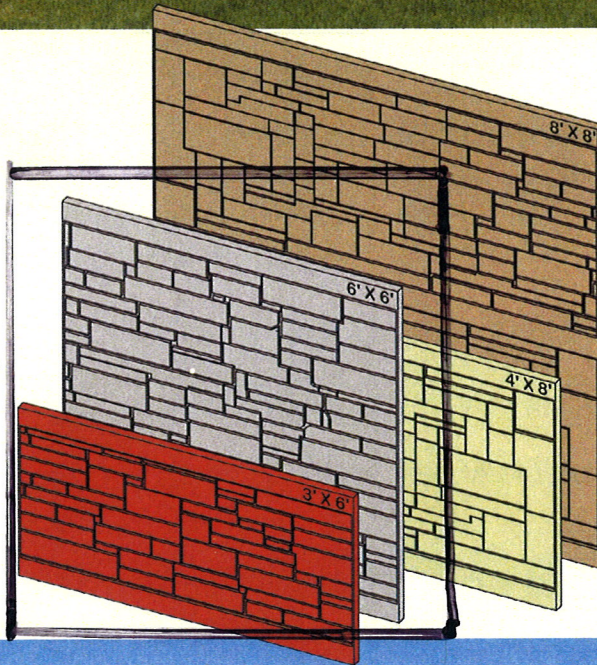
NEW IN 2009!

8 FOOT WALL



## Panels:

- Panels come in 3' and 6' heights by 6' width or 4' height by 8' width.
- All panels contain high-grade galvanized steel in both top and bottom rails.
- Panel heights cannot be modified, however, panels can be cut to any custom width.
- 4' panels have been engineered to allow stacking to create an 8' wall on 8' centers.



## Posts:

- Posts come in 8.5' and 12' heights and have a five-inch outer diameter.
- All posts contain full-length internally molded steel stiffeners for optimum strength.
- Posts are made from 50% recycled polyethylene.

White  
Granite

Grey  
Granite



Desert  
Granite

Beige  
Granite

Black  
Granite

Brown  
Granite

