



**Case File No. 16-0037**



# SANCTUARY PRESERVE 3RD ADDITION

CITY OF BLAINE  
COUNTY OF ANOKA  
SEC. 14, T. 31, R. 23

KNOW ALL PERSONS BY THESE PRESENTS: That Centex Homes, a Nevada general partnership, owner of the following described property:

Outlot A, SANCTUARY PRESERVE 2ND ADDITION, according to the recorded plat thereof, Anoka County, Minnesota.

Has caused the same to be surveyed and platted as SANCTUARY PRESERVE 3RD ADDITION and does hereby dedicate to the public for public use the public way and the drainage and utility easements as shown on this plat.

In witness whereof said Centex Homes, a Nevada general partnership, has caused these presents to be signed by its proper partner this \_\_\_\_\_ day of \_\_\_\_\_, 20\_\_\_\_.

**CENTEX HOMES**  
By: Centex Real Estate Corporation, a Nevada corporation,  
Its Managing General Partner

By \_\_\_\_\_  
Its \_\_\_\_\_

STATE OF MINNESOTA  
COUNTY OF \_\_\_\_\_

This instrument was acknowledged before me this \_\_\_\_\_ day of \_\_\_\_\_, 20\_\_\_\_ by \_\_\_\_\_, its \_\_\_\_\_ of Centex Real Estate Corporation, a Nevada corporation, the managing general partner of Centex Homes, a Nevada general partnership, on behalf of the partnership.

Notary Public, \_\_\_\_\_ County, Minnesota  
My Commission Expires \_\_\_\_\_

I, Craig W. Morse do hereby certify that this plat was prepared by me or under my direct supervision; that I am a duly Licensed Land Surveyor in the State of Minnesota; that this plat is a correct representation of the boundary survey; that all mathematical data and labels are correctly designated on this plat; that all monuments depicted on this plat have been, or will be correctly set within one year; that all water boundaries and wet lands, as defined in Minnesota Statutes, Section 505.01, Subd. 3, as of the date of this certificate are shown and labeled on this plat; and all public ways are shown and labeled on this plat.

Dated this \_\_\_\_\_ day of \_\_\_\_\_, 20\_\_\_\_.

\_\_\_\_\_  
Craig W. Morse, Licensed Land Surveyor  
Minnesota License No. 23021

STATE OF MINNESOTA  
COUNTY OF HENNEPIN

This instrument was acknowledged before me on \_\_\_\_\_ by Craig W. Morse.

Notary Public, \_\_\_\_\_ County, Minnesota  
My Commission Expires \_\_\_\_\_

CITY COUNCIL, CITY OF BLAINE, MINNESOTA

This plat of SANCTUARY PRESERVE 3RD ADDITION was approved and accepted by the City Council of the City of Blaine, Minnesota at a regular meeting thereof held this \_\_\_\_\_ day of \_\_\_\_\_, 20\_\_\_\_, and said plat is in compliance with the provisions of Minnesota Statutes, Section 505.03, Subd. 2.

CITY COUNCIL, CITY OF BLAINE, MINNESOTA

\_\_\_\_\_  
Mayor

\_\_\_\_\_  
Clerk

COUNTY SURVEYOR

I hereby certify that in accordance with Minnesota Statutes, Section 505.021, Subd. 11, this plat has been reviewed and approved this \_\_\_\_\_ day of \_\_\_\_\_, 20\_\_\_\_.

\_\_\_\_\_  
Larry D. Holm, Anoka County Surveyor

COUNTY AUDITOR/TREASURER

Pursuant to Minnesota Statutes, Section 505.021, Subd. 9, taxes payable in the year 20\_\_\_\_ on the land hereinbefore described have been paid. Also, pursuant to Minnesota Statutes, Section 272.12, there are no delinquent taxes and transfer entered this \_\_\_\_\_ day of \_\_\_\_\_, 20\_\_\_\_.

\_\_\_\_\_  
Property Tax Administrator

By \_\_\_\_\_, Deputy

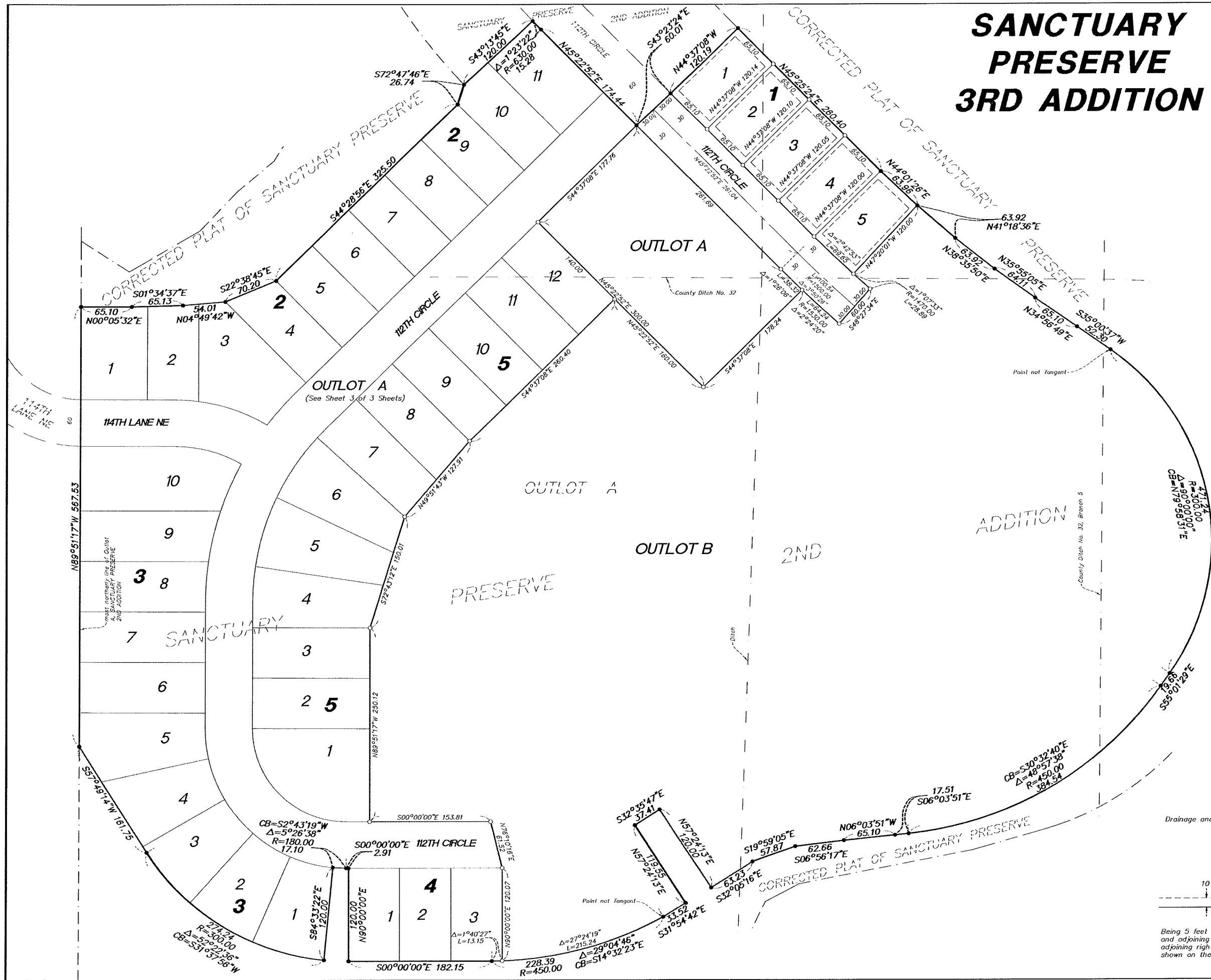
COUNTY RECORDER/REGISTRAR OF TITLES  
COUNTY OF ANOKA, STATE OF MINNESOTA

I hereby certify that this plat of SANCTUARY PRESERVE 3RD ADDITION was filed in the office of the County Recorder/Registrar of Titles for public record on this \_\_\_\_\_ day of \_\_\_\_\_, 20\_\_\_\_, at \_\_\_\_\_ o'clock \_\_\_\_\_M. and was duly recorded in Book \_\_\_\_\_, Page \_\_\_\_\_, as Document Number \_\_\_\_\_.

\_\_\_\_\_  
County Recorder/Registrar of Titles

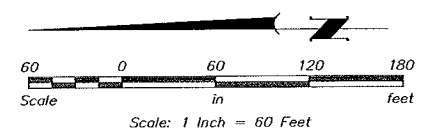
By \_\_\_\_\_, Deputy

# SANCTUARY PRESERVE 3RD ADDITION

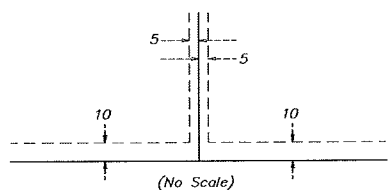


The most northerly line of Outlot A, SANCTUARY PRESERVE 2ND ADDITION is assumed to bear N 89°51'17\" W.

- Denotes 1/2 inch by 14 inch iron rebar set and marked by License No. 23021
- Denotes iron monument found



Drainage and Utility Easements are shown thus:



Being 5 feet in width, unless otherwise indicated, and adjoining lot lines, and 10 feet in width and adjoining right-of-way lines and rear lot lines as shown on the plat.

# SANCTUARY PRESERVE 3RD ADDITION

CITY OF BLAINE  
 COUNTY OF ANOKA  
 SEC. 14, T. 31, R. 23

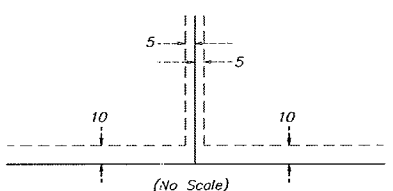
**INSET**  
 (From sheet 2 of 3 sheets)



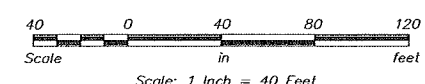
The most northerly line of Outlet D, CORRECTED PLAT OF SANCTUARY PRESERVE is assumed to bear N 89°51'17" W.

- Denotes 1/2 inch by 14 inch iron rebar set and marked by License No. 23021
- Denotes iron monument found

Drainage and Utility Easements are shown thus:



Being 5 feet in width, unless otherwise indicated, and adjoining lot lines, and 10 feet in width and adjoining right-of-way lines and rear lot lines as shown on the plat.



**Westwood**  
 Professional Services, Inc.