

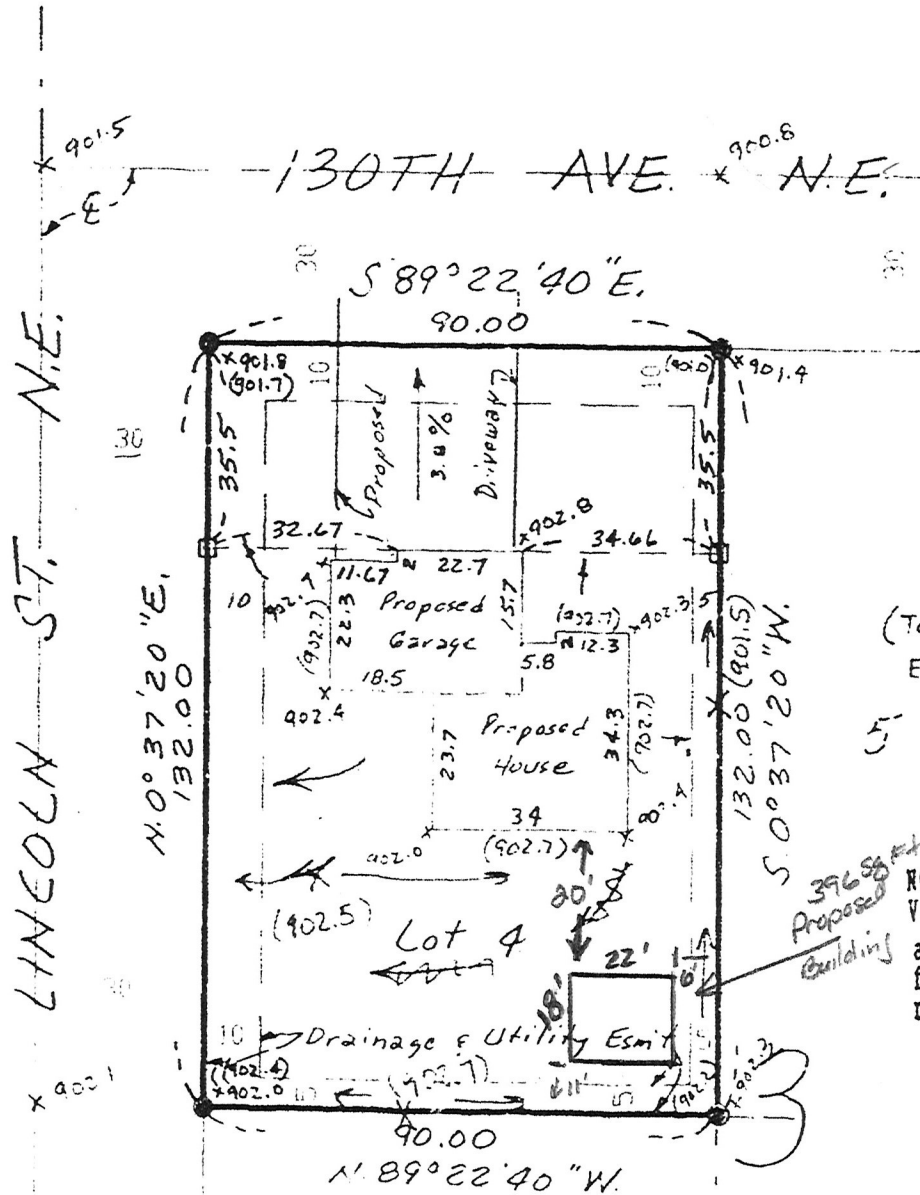
Case File No. 17-0035
Christopher Russo

Blaine Planning Department / 10801 Town Square Dr NE / Blaine, MN 55449 / (763) 785-6180



CERTIFICATE OF SURVEY FOR: Emmertich Construction

DESCRIBED AS: Lot 4, Block 3, D. ERICKSON 4TH ADDITION, according to the recorded plat thereof, Anoka County, Minnesota.

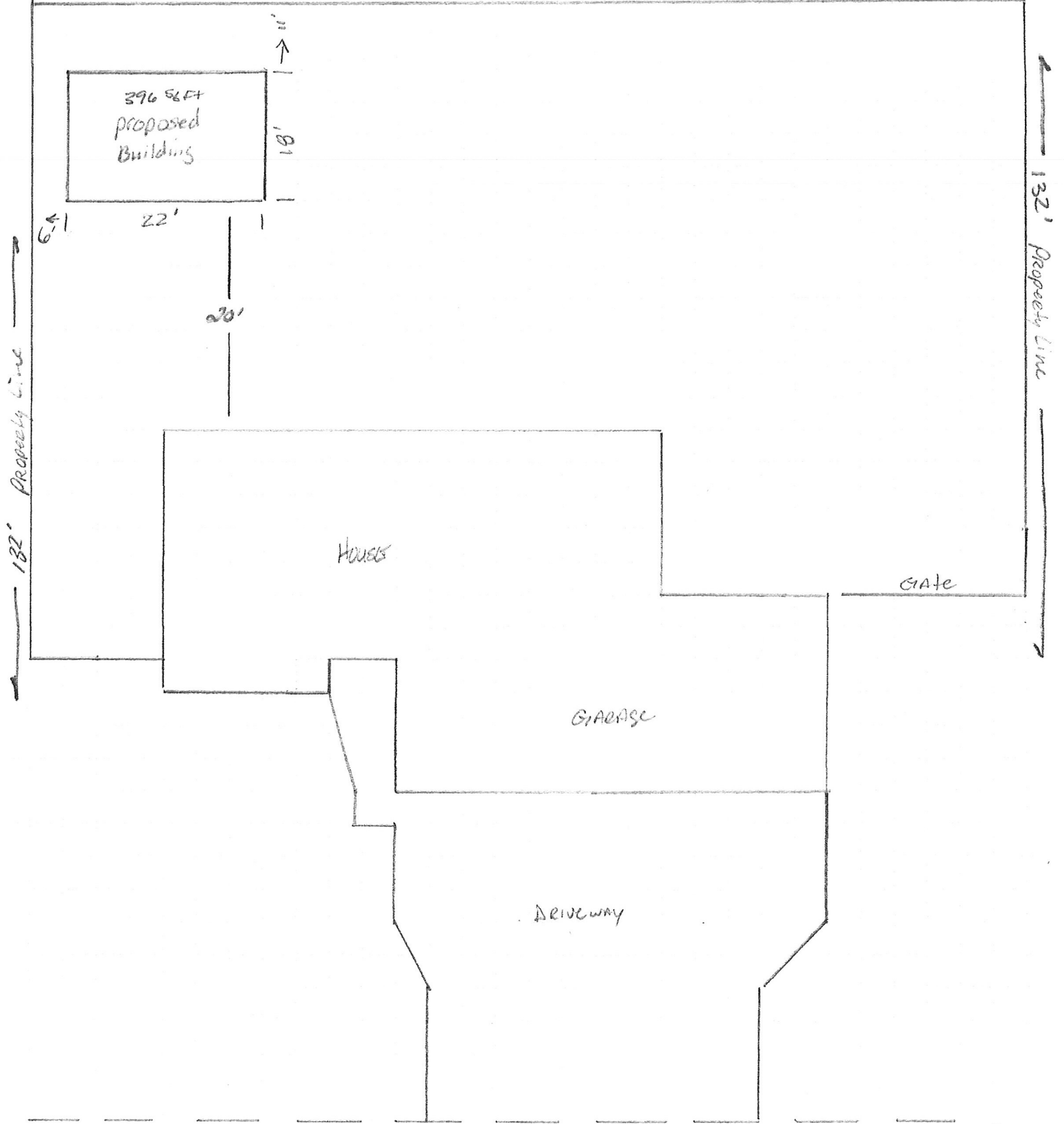


(Top of Foundation Existing House = 903.8)

NOTE: Verify all setback requirements and proposed building elevations for compliance with all requirements before construction.



← 90' → Property Line



182' Property Line

132' Property Line

House

Garage

Driveway

Gate

Street

S
N

Southeast
Property Corner

90' Property Line



11'
Setback

6'
Setback

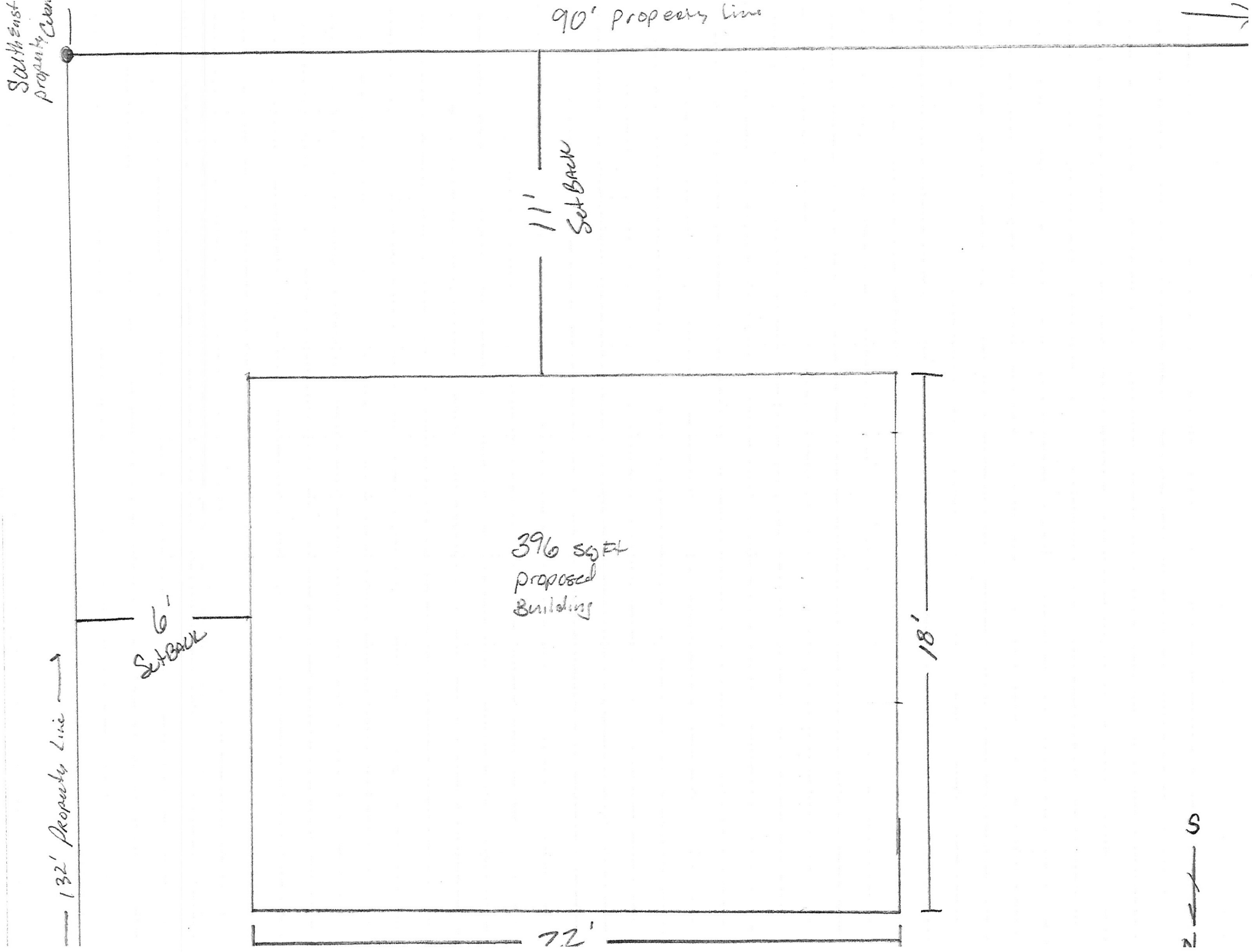
132' Property Line

396 sq ft
proposed
Building

18'

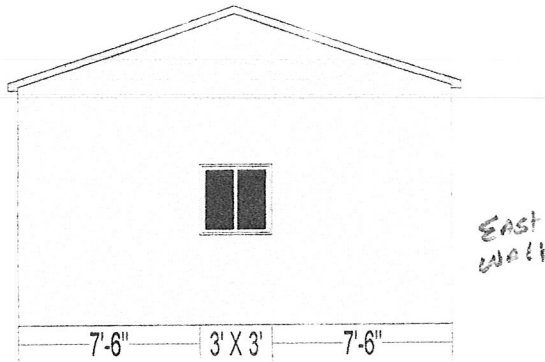
72'

5
S

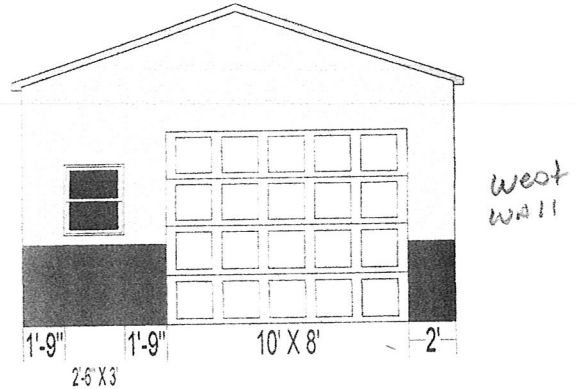


*** Here are the wall configurations for your design.

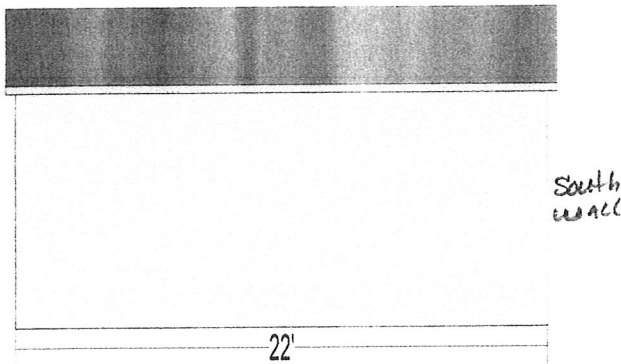
Illustration May Not Depict All Options Selected



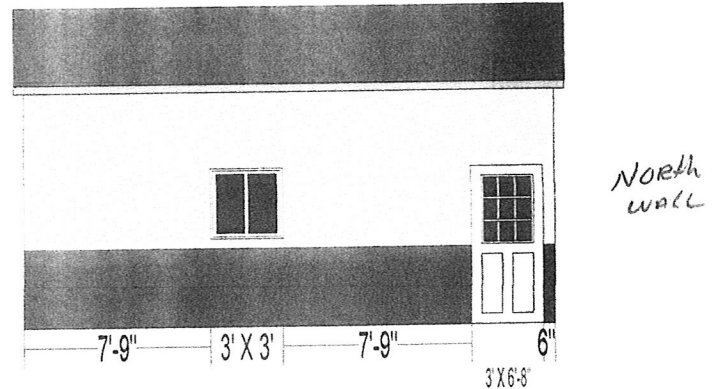
Gable Front View
(1) - WINDOW 36X36 SLIDER UTILITY WINDOW 36X36



Gable Back View
(1) - SINGLE HUNG (GOOD) 30X36
(1) - GARAGE DOOR MDP38U 10X8 EZ-SET WHITE MDP38U INSUL



Eave Front View



Eave Back View
(1) - WINDOW 36X36 SLIDER UTILITY WINDOW 36X36
(1) - MIDWEST STEEL C-4-9-LITE TRAD 2-PNL PH 36X80 RH SB

Building Size: 18 feet wide X 22 feet long X 10 feet high
Approximate Peak Height: 13 feet 4 inches (160 inches)

NOTE: Overhead doors may need to be "Wind Code Rated" depending on your building location.
Confirm the door requirements with your local zoning official before construction.

Menards-provided material estimates are intended as a general construction aid and have been calculated using typical construction methods. Because of the wide variability in codes and site restrictions, all final plans and material lists must be verified with your local zoning official. Menards is a supplier of construction materials and does not assume liability for design, engineering or the completeness of any material lists provided. Underground electrical, phone and gas lines should be located and marked before your building plans are finalized. Remember to use safety equipment including dust masks and sight and hearing protection during construction to ensure a safe building experience.