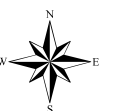


**Case File No. 21-0022**  
**Hennem Meadows 2nd Addition**



BlaineMN.gov

Blaine Planning Department / 10801 Town Square Dr NE / Blaine, MN 55449 / (763) 785-6180



KNOW ALL PERSONS BY THESE PRESENTS: That G.E. Knutson, Inc., The Elizabeth Marie Estates LLC, a Minnesota limited liability company, owner of the following described property:

Lot 1, Block 3, HENNUM MEADOWS, Anoka County, Minnesota.

Has caused the same to be surveyed and platted as HENNUM MEADOWS 2ND ADDITION and does hereby dedicate to the public for public use the drainage and utility easements as shown on this plat.

In witness whereof said The Elizabeth Marie Estates LLC, a Minnesota limited liability company, has caused these presents to be signed by its proper officer this \_\_\_\_\_ day of \_\_\_\_\_, 20\_\_\_\_.

THE ELIZABETH MARIE ESTATES LLC

\_\_\_\_\_  
Daniel Hennum, Chief Manager

STATE OF \_\_\_\_\_  
COUNTY OF \_\_\_\_\_

This instrument was acknowledged before me this \_\_\_\_\_ day of \_\_\_\_\_, 20\_\_\_\_ by Daniel Hennum, Chief Manager of The Elizabeth Marie Estates LLC, a Minnesota limited liability company.

\_\_\_\_\_  
(Signature)

\_\_\_\_\_  
(Print Name)

Notary Public, \_\_\_\_\_ County, Minnesota  
My Commission Expires \_\_\_\_\_

I Jason E. Rud, do hereby certify that this plat was prepared by me or under my direct supervision; that I am a duly Licensed Land Surveyor in the State of Minnesota; that this plat is a correct representation of the boundary survey; that all mathematical data and labels are correctly designated on this plat; that all monuments depicted on this plat have been, or will be correctly set within one year; that all water boundaries and wet lands, as defined in Minnesota Statutes, Section 505.01, Subd. 3, as of the date of this certificate are shown and labeled on this plat; and all public ways are shown and labeled on this plat.

Dated this \_\_\_\_\_ day of \_\_\_\_\_, 20\_\_\_\_.

\_\_\_\_\_  
Jason E. Rud, Licensed Land Surveyor  
Minnesota License No. 41578

STATE OF MINNESOTA  
COUNTY OF \_\_\_\_\_

This instrument was acknowledged before me this \_\_\_\_\_ day of \_\_\_\_\_, 20\_\_\_\_ by Jason E. Rud.

\_\_\_\_\_  
(Signature)

\_\_\_\_\_  
(Print Name)

Notary Public, \_\_\_\_\_ County, Minnesota  
My Commission Expires \_\_\_\_\_

CITY COUNCIL, CITY OF BLAINE, MINNESOTA

This plat of HENNUM MEADOWS 2ND ADDITION was approved and accepted by the City Council of the City of Blaine, Minnesota at a regular meeting thereof held this \_\_\_\_\_ day of \_\_\_\_\_, 20\_\_\_\_, and said plat is in compliance with the provisions of Minnesota Statutes, Section 505.03, Subd. 2.

City Council, City of Blaine, Minnesota

By \_\_\_\_\_ Mayor By \_\_\_\_\_ Clerk

COUNTY SURVEYOR

I hereby certify that in accordance with Minnesota Statutes, Section 505.021, Subd. 11, this plat has been reviewed and approved this \_\_\_\_\_ day of \_\_\_\_\_, 20\_\_\_\_.

\_\_\_\_\_  
Charles F. Gitzen  
Anoka County Surveyor

COUNTY AUDITOR/TREASURER

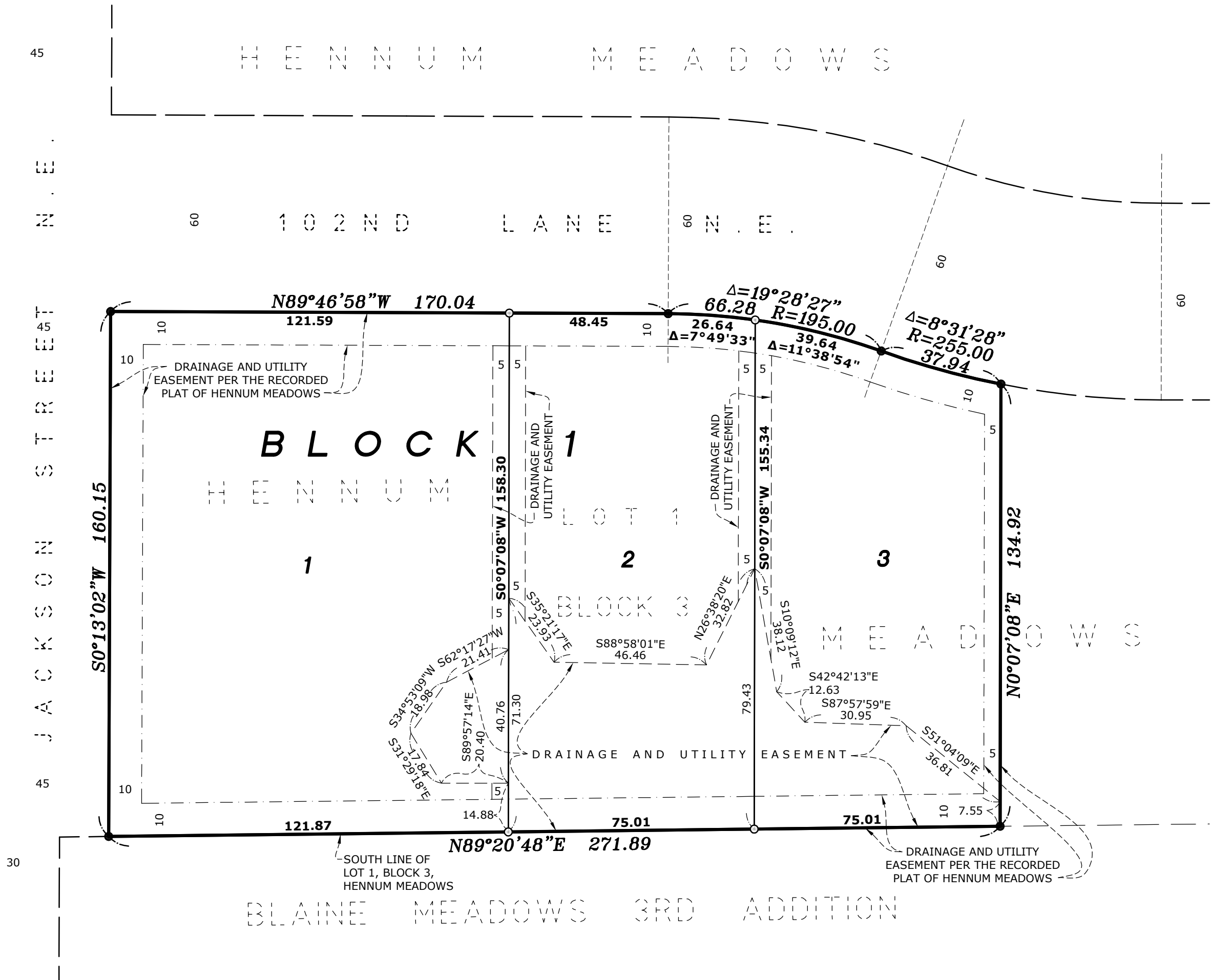
Pursuant to Minnesota Statutes, Section 505.021, Subd. 9, taxes payable in the year 20\_\_\_\_ on the land hereinbefore described have been paid. Also, pursuant to Minnesota Statutes, Section 272.12, there are no delinquent taxes and transfer entered this \_\_\_\_\_ day of \_\_\_\_\_, 20\_\_\_\_.

\_\_\_\_\_  
Property Tax Administrator

By \_\_\_\_\_, Deputy

# HENNUM MEADOWS 2ND ADDITION

GREEN ACRES ADDITION  
HENNUM MEADOWS NORTH



COUNTY RECORDER/REGISTRAR OF TITLES  
COUNTY OF ANOKA, STATE OF MINNESOTA

I hereby certify that this plat of HENNUM MEADOWS 2ND ADDITION was filed in the office of the County Recorder/Registrar of Titles for public record on this \_\_\_\_\_ day of \_\_\_\_\_, 20\_\_\_\_, at \_\_\_\_\_ o'clock \_\_\_\_\_ M. and was duly recorded as Document Number \_\_\_\_\_.

\_\_\_\_\_  
County Recorder/Registrar of Titles

By \_\_\_\_\_, Deputy

## LEGEND

- DENOTES FOUND 1/2 INCH IRON PIPE MARKED RLS NO. 41578
- DENOTES 1/2 INCH BY 14 INCH IRON PIPE SET, MARKED RLS NO. 41578

FOR THE PURPOSES OF THIS PLAT, THE SOUTH LINE OF LOT 1, BLOCK 3, HENNUM MEADOWS IS ASSUMED TO HAVE A BEARING OF NORTH 89 DEGREES 20 MINUTES 48 SECONDS EAST.

