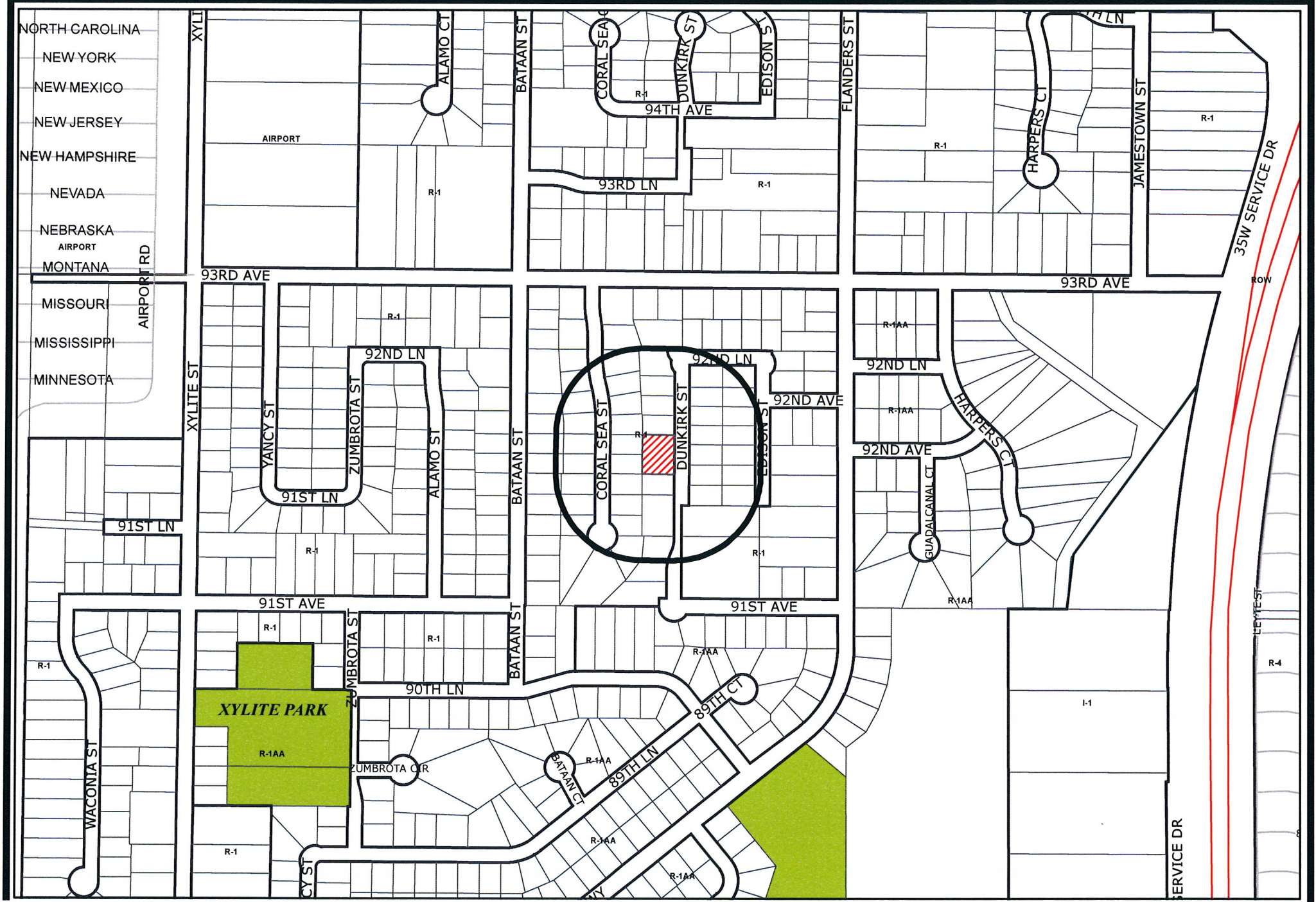


NORTH CAROLINA
NEW YORK
NEW MEXICO
NEW JERSEY
NEW HAMPSHIRE
NEVADA
NEBRASKA
AIRPORT
MONTANA

MISSOURI
MISSISSIPPI
MINNESOTA



Case File No. 14-0045

Blaine Planning Department / 10801 Town Square Dr NE / Blaine, MN 55449 / (763) 785-6180



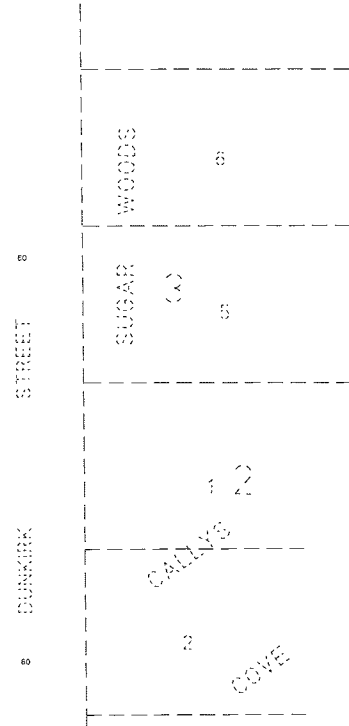
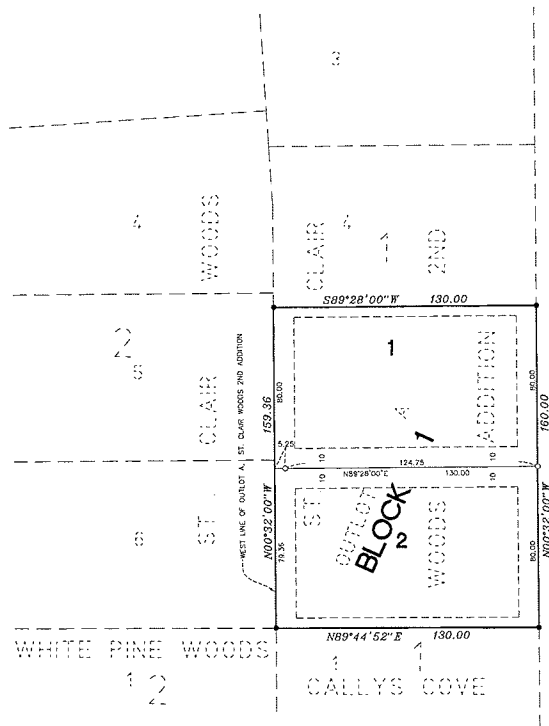
ST. CLAIR WOODS 3RD ADDITION

City of Blaine
County of Anoka
Sec. 34, T31, R23

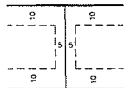
LEGEND:

- DENOTES FOUND 1/2 INCH BY 18 INCH IRON MONUMENT MARKED BY R.L.S. 9808
- DENOTES SET 1/2 INCH BY 14 INCH IRON MONUMENT MARKED BY R.L.S. 41578

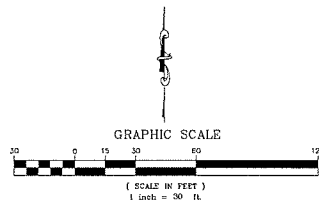
For the purposes of this plot the West line of Outlet A, ST. CLAIR WOODS 2ND ADDITION is assumed to have a bearing of N00°32'00"W.



DRAINAGE AND UTILITY EASEMENTS ARE SHOWN AS THUS:



BEING 5 FEET IN WIDTH AND ADJOINING SIDE LOT LINES, AND 10 FEET IN WIDTH AND ADJOINING STREET LINES AND REAR LOT LINES, UNLESS OTHERWISE SHOWN ON THE PLAT.



KNOW ALL MEN BY THESE PRESENTS: That St. Clair Properties Inc., a Minnesota corporation, owner of the following described property situated in the State of Minnesota, County of Anoka to wit:

Outlet A, ST. CLAIR WOODS 2ND ADDITION, Anoka County, Minnesota.

Has caused the same to be surveyed and platted as ST. CLAIR WOODS 3RD ADDITION and does hereby dedicate to the public for public use forever the drainage and utility easements as shown on this plat.

In witness whereof said St. Clair Properties Inc., a Minnesota corporation, has caused these presents to be signed by its proper officer this _____ day of _____, 20____.

ST. CLAIR PROPERTIES INC.

Jamie Jensen, President

STATE OF _____
COUNTY OF _____

The foregoing instrument was acknowledged before me this _____ day of _____, 20____, by Jamie Jensen, as president of St. Clair Properties Inc., a Minnesota corporation, on behalf of the corporation.

Notary Public, _____ County, Minnesota
My Commission Expires _____

I, Jason E. Rud do hereby certify that this plat was prepared by me or under my direct supervision; that I am a duly Licensed Land Surveyor in the State of Minnesota; that this plat is a correct representation of the boundary survey; that all mathematical data and labels are correctly designated on this plat; that all monuments depicted on this plat have been set; that all water boundaries and wet lands, as defined in Minnesota Statutes, Section 505.01, Subd. 3, as of the date of this certificate are shown and labeled on this plat; and all public ways are shown and labeled on this plat.

Dated this _____ day of _____, 20____.

Jason E. Rud, Licensed Land Surveyor
Minnesota License No. 41578

STATE OF MINNESOTA

COUNTY OF _____
The foregoing instrument was acknowledged before me this _____ day of _____, 20____, by Jason E. Rud.

Notary Public, _____ County, Minnesota
My Commission Expires _____

City Council, City of Blaine, Minnesota

This plat of ST. CLAIR WOODS 3RD ADDITION was approved and accepted by the City Council of the City of Blaine, Minnesota at a regular meeting thereof held this _____ day of _____, 20____, and said plat is in compliance with the provisions of Minnesota Statutes, Section 505.03, Subd. 2.

City Council, City of Blaine, Minnesota

By _____ Mayor

By _____ Clerk

County Surveyor

I hereby certify that in accordance with Minnesota Statutes, Section 505.021, Subd. 11, this plat has been reviewed and approved this _____ day of _____, 20____.

Lerry O. Holm
Anoka County Surveyor