

# The Taylor

2 Stories | 4 Bedrooms | 3 Baths | 3-Car Garage

2,680 Sq. Ft. Total



**LENNAR**

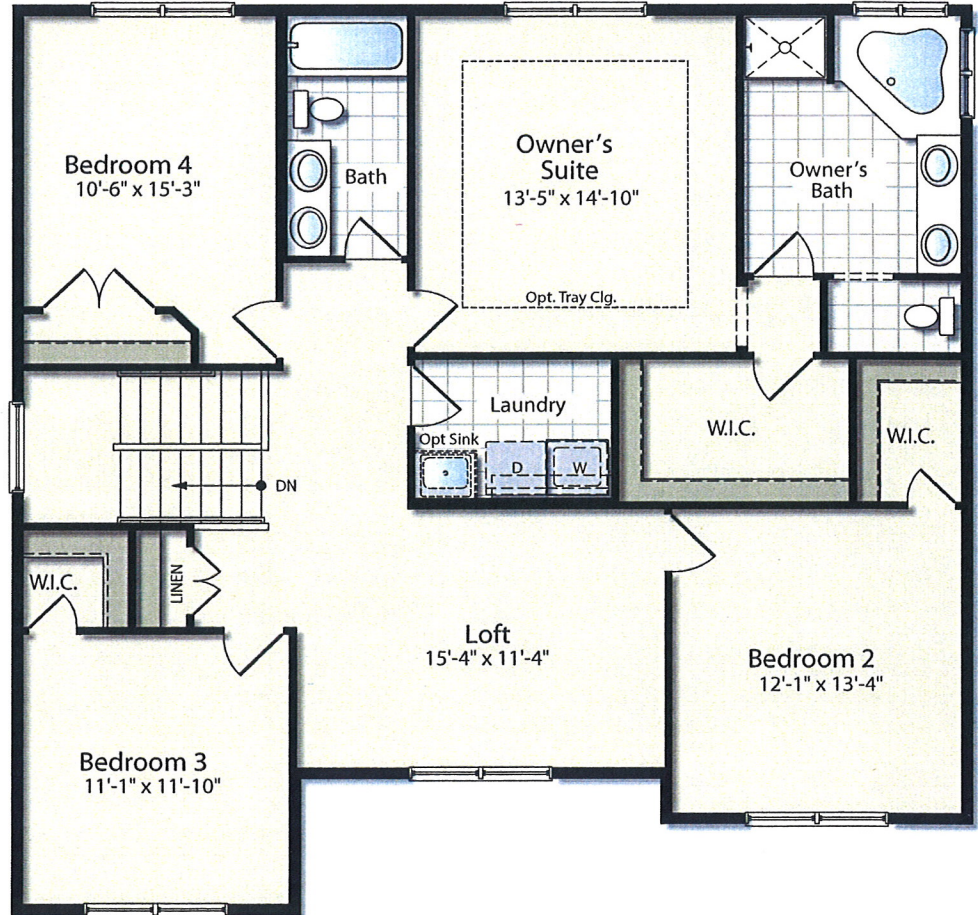
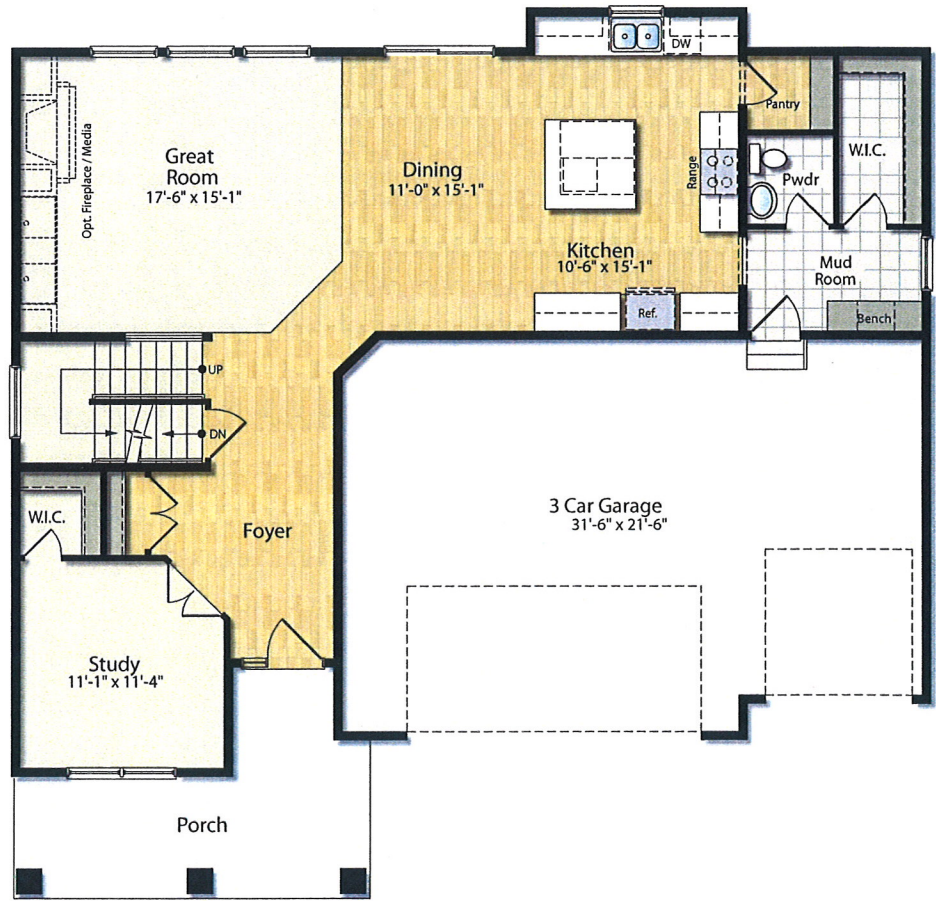
16305 36th Avenue N., Suite 600, Plymouth, MN 55446 • 952-249-3000



# The Taylor

4 Bedrooms  
3 Baths

2,680 Sq. Ft. Total



EVERYTHING'S  
INCLUDED  
HOMES

LENNAR.COM

Plans and elevations are artist's renderings and may contain options, which are not standard on all models. Lennar reserves the right to make changes to these floor plans, specifications, dimensions and elevations without prior notice. Stated dimensions and square footage are approximate and should not be used as representation of the home's precise or actual size. Any statement, verbal or written, regarding "under air" or "finished area" or any other description or modifier of the square footage size of any home is a shorthand description of the manner in which the square footage was estimated and should not be construed to indicate certainty. Copyright © 2012 Lennar Corporation. Lennar and the Lennar logo are registered service marks of Lennar Corporation and/or its subsidiaries. MN Bldr. Lic# BC001413 3/12 03/2014





# Lindbergh

1 Story | 2 Bedrooms | 2 Baths | 3-Bay Garage

1,902 Sq. Ft. Total



**LENNAR**

16305 36th Avenue N., Suite 600, Plymouth, MN 55446 • 952-249-3000



# The Lindbergh

2 Bedrooms

2 Baths

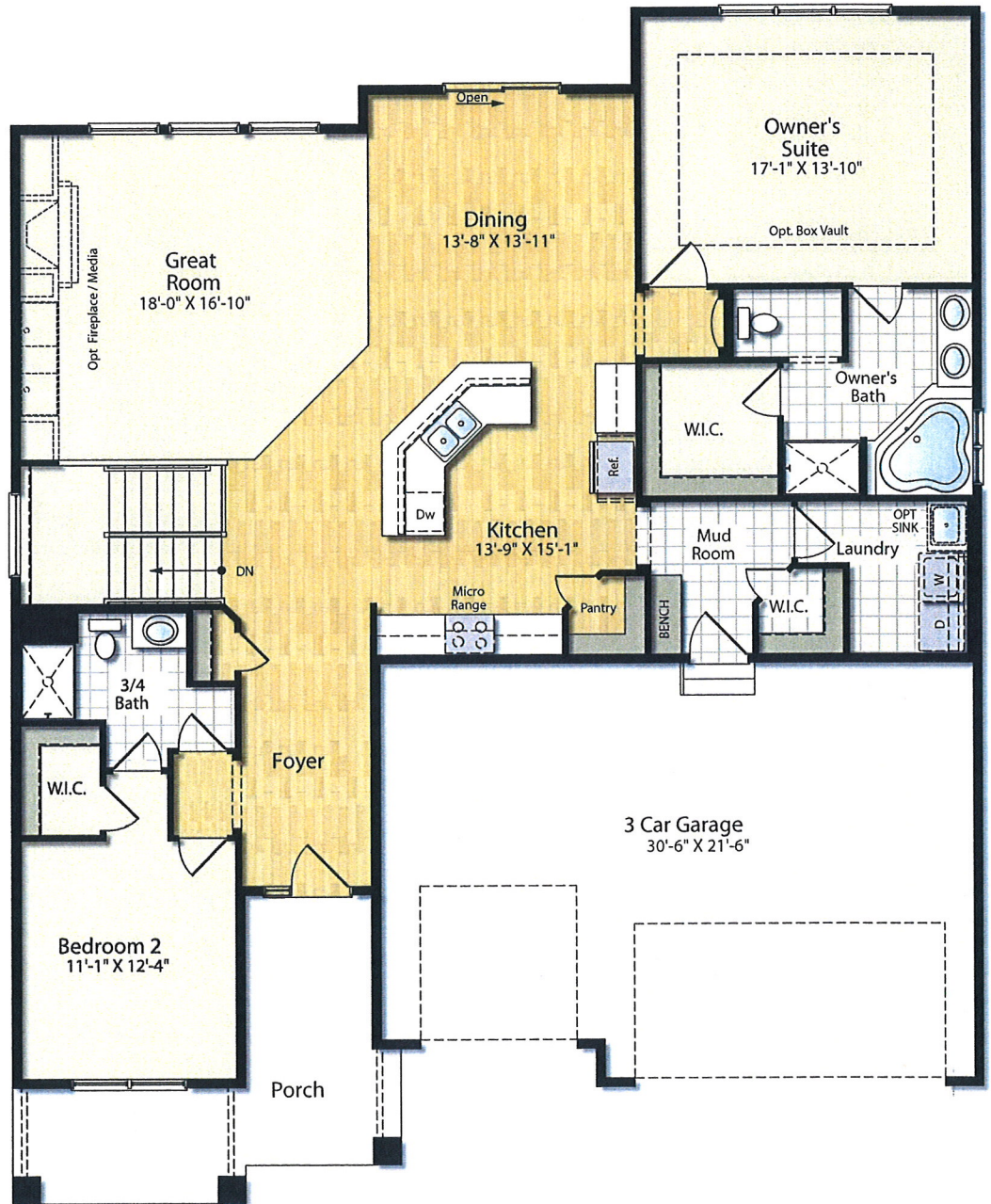
1,902 Sq. Ft. Total



EVERYTHING'S  
INCLUDED  
HOMES

LENNAR.COM

Plans and elevations are artist's renderings and may contain options, which are not standard on all models. Lennar reserves the right to make changes to these floor plans, specifications, dimensions and elevations without prior notice. Stated dimensions and square footage are approximate and should not be used as representation of the home's precise or actual size. Any statement, verbal or written, regarding "under air" or "finished area" or any other description or modifier of the square footage size of any home is a shorthand description of the manner in which the square footage was estimated and should not be construed to indicate certainty. Copyright © 2012 Lennar Corporation. Lennar and the Lennar logo are registered service marks of Lennar Corporation and/or its subsidiaries. MN Bldr. Lic# BC001413 3/12





# The Washburn

2 Stories | 4 Bedrooms | 4 Baths | 3-Bay Garage

3,328 Sq. Ft. Total



**LENNAR**

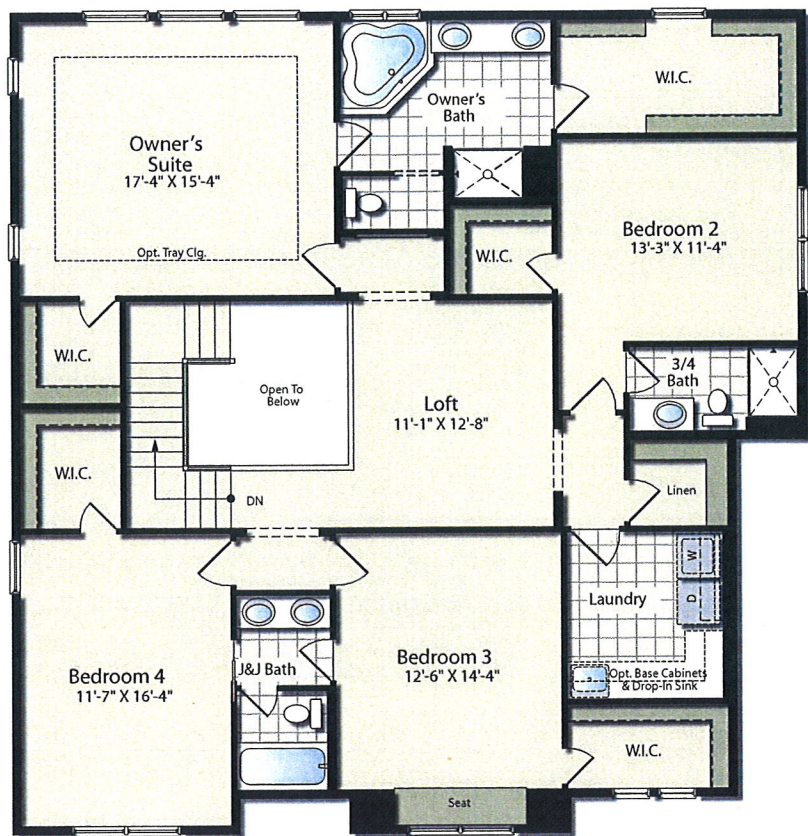
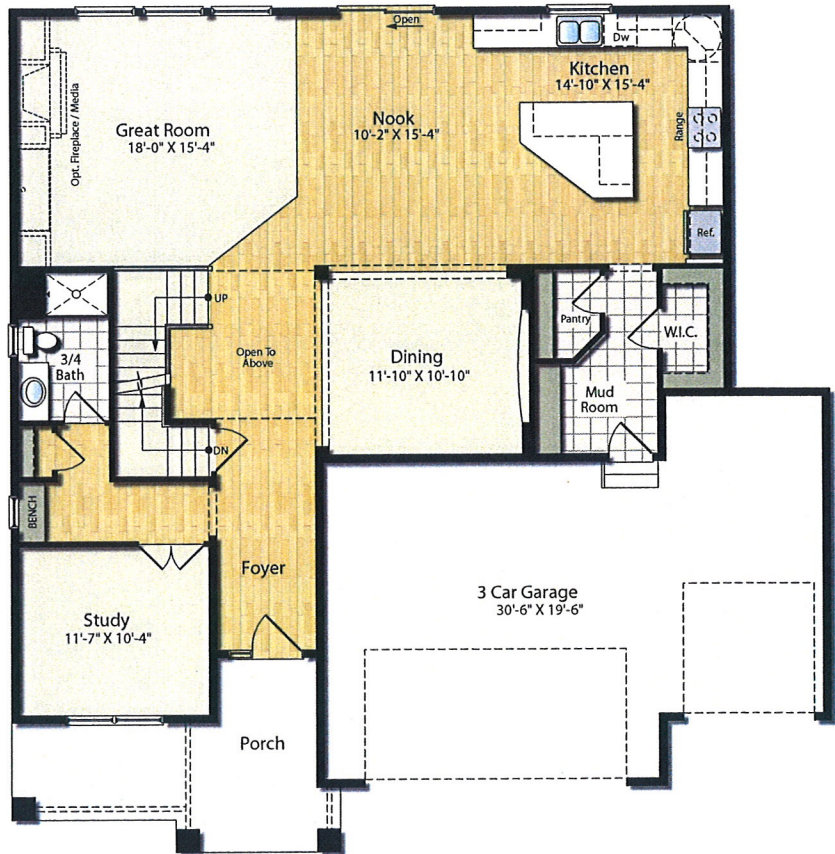
16305 36th Avenue N., Suite 600, Plymouth, MN 55446 • 952-249-3000



# The Washburn

4 Bedrooms  
4 Baths

3,328 Sq. Ft. Total



EVERYTHING'S  
INCLUDED  
HOMES

[LENNAR.COM](http://LENNAR.COM)

Plans and elevations are artist's renderings and may contain options, which are not standard on all models. Lennar reserves the right to make changes to these floor plans, specifications, dimensions and elevations without prior notice. Stated dimensions and square footage are approximate and should not be used as representation of the home's precise or actual size. Any statement, verbal or written, regarding "under air" or "finished area" or any other description or modifier of the square footage size of any home is a shorthand description of the manner in which the square footage was estimated and should not be construed to indicate certainty. Copyright © 2012 Lennar Corporation. Lennar and the Lennar logo are registered service marks of Lennar Corporation and/or its subsidiaries. MN Bldr. Lic# BC001413 3/12 03/2013





# The Bristol

2 Stories | 4 Bedrooms | 4 Baths | 3-Bay Garage

3,081 Sq. Ft. Total



**LENNAR**

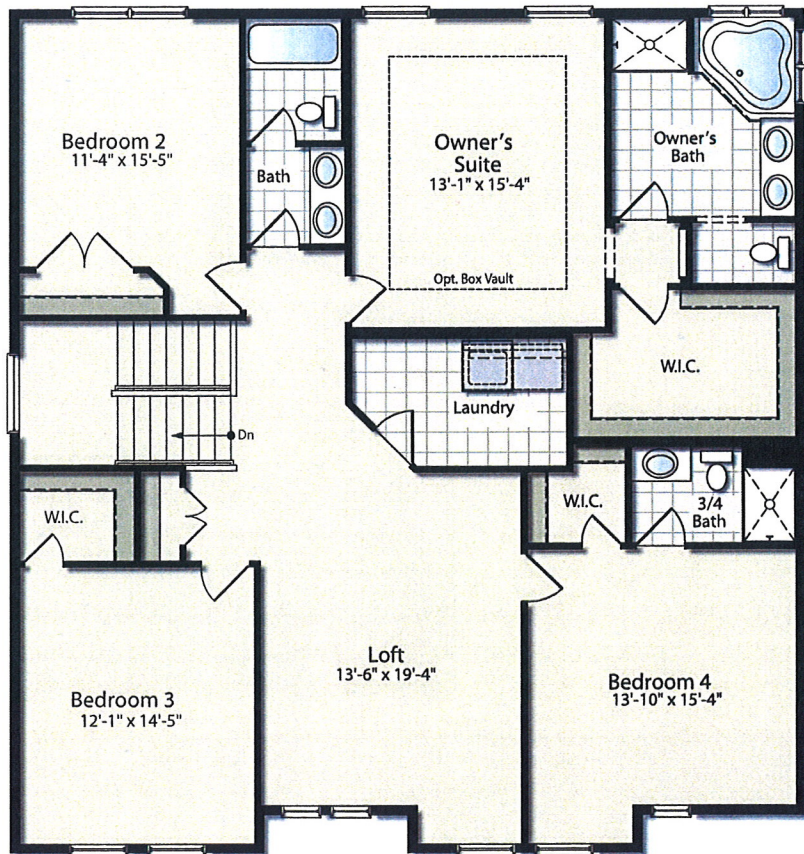
16305 36th Avenue N., Suite 600, Plymouth, MN 55446 • 952-249-3000



# The Bristol

4 Bedrooms  
4 Baths

3,081 Sq. Ft. Total



EVERYTHING'S  
INCLUDED  
HOMES

LENNAR.COM

Plans and elevations are artist's renderings and may contain options, which are not standard on all models. Lennar reserves the right to make changes to these floor plans, specifications, dimensions and elevations without prior notice. Stated dimensions and square footage are approximate and should not be used as representation of the home's precise or actual size. Any statement, verbal or written, regarding "under air" or "finished area" or any other description or modifier of the square footage size of any home is a shorthand description of the manner in which the square footage was estimated and should not be construed to indicate certainty. Copyright © 2012 Lennar Corporation. Lennar and the Lennar logo are registered service marks of Lennar Corporation and/or its subsidiaries. MN Bldr. Lic# BC001413 3/12





# The Kellogg

2 Stories | 4 Bedrooms | 4 Baths | 3-Bay Garage

3,112 Sq. Ft. Total



**LENNAR**

16305 36th Avenue N., Suite 600, Plymouth, MN 55446 • 952-249-3000



# The Kellogg

4 Bedrooms  
4 Baths

3,112 Sq. Ft. Total



EVERYTHING'S  
INCLUDED  
HOMES

[LENNAR.COM](http://LENNAR.COM)

Plans and elevations are artist's renderings and may contain options, which are not standard on all models. Lennar reserves the right to make changes to these floor plans, specifications, dimensions and elevations without prior notice. Stated dimensions and square footage are approximate and should not be used as representation of the home's precise or actual size. Any statement, verbal or written, regarding "under air" or "finished area" or any other description or modifier of the square footage size of any home is a shorthand description of the manner in which the square footage was estimated and should not be construed to indicate certainty. Copyright © 2012 Lennar Corporation. Lennar and the Lennar logo are registered service marks of Lennar Corporation and/or its subsidiaries. MN Bldr. Lic# BC001413 3/12





# The Pillsbury

2 Stories | 4 Bedrooms | 3 Baths | 3-Bay Garage

2,230 Sq. Ft. Total



**LENNAR**<sup>®</sup>

16305 36th Avenue N., Suite 600, Plymouth, MN 55446 • 952-249-3000

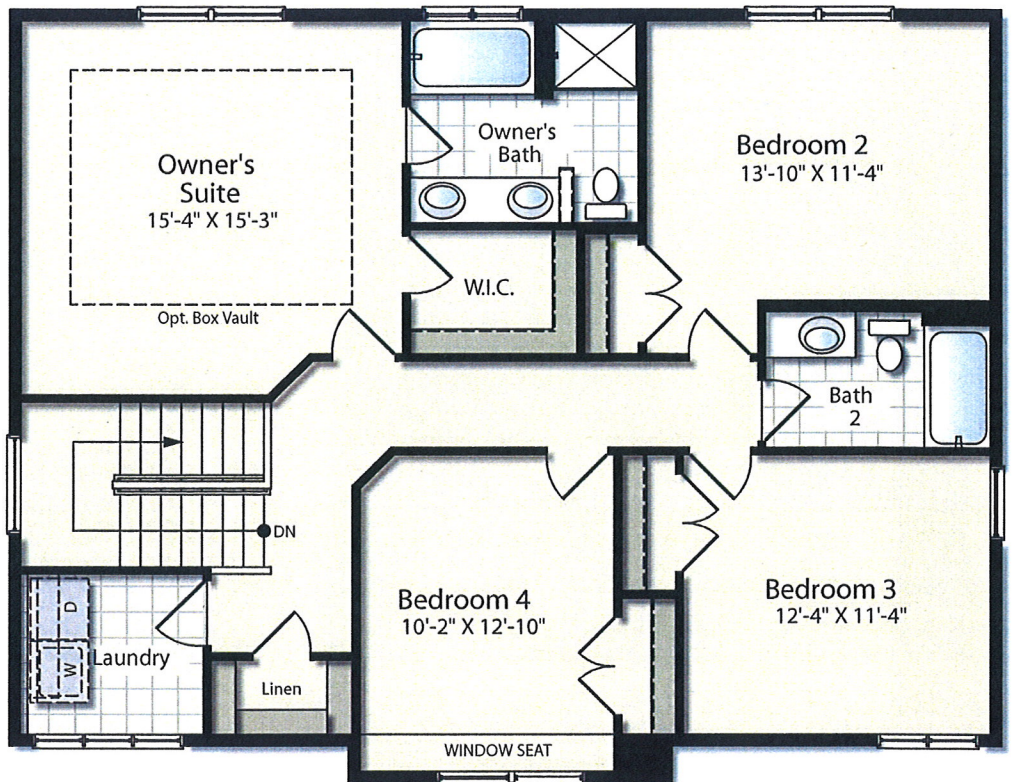
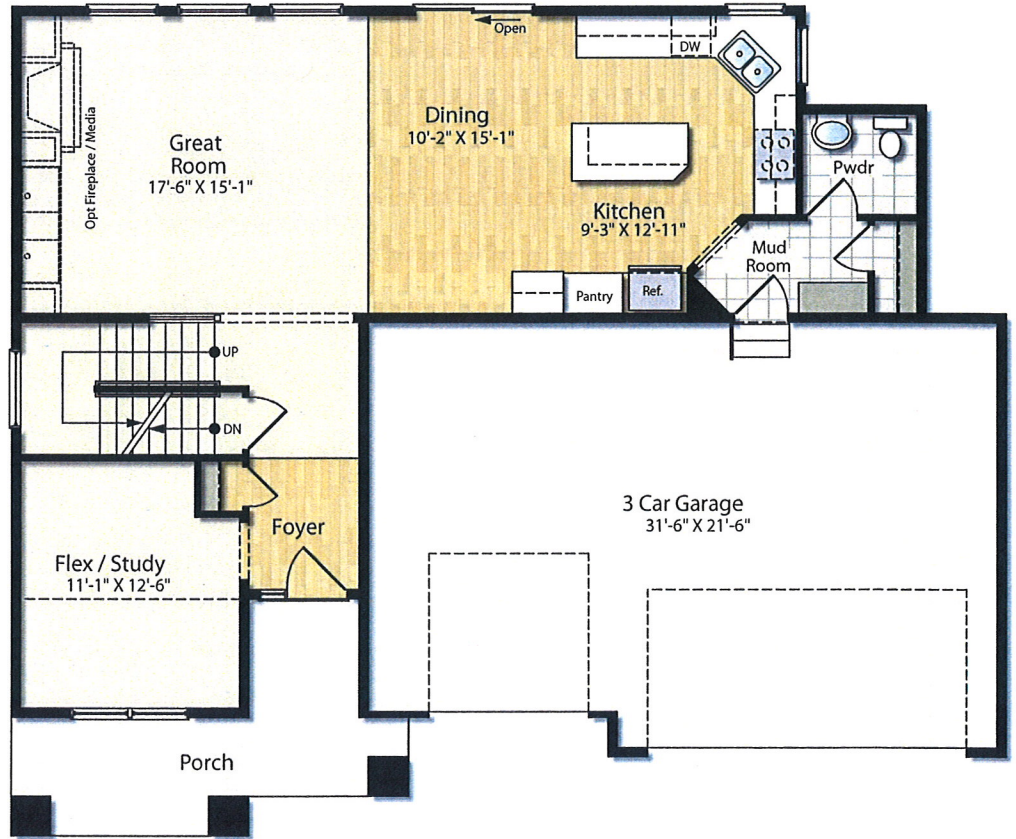


# The Pillsbury

4 Bedrooms

3 Baths

2,230 Sq. Ft. Total



EVERYTHING'S INCLUDED HOMES

LENNAR.COM

Plans and elevations are artist's renderings and may contain options, which are not standard on all models. Lennar reserves the right to make changes to these floor plans, specifications, dimensions and elevations without prior notice. Stated dimensions and square footage are approximate and should not be used as representation of the home's precise or actual size. Any statement, verbal or written, regarding "under air" or "finished area" or any other description or modifier of the square footage size of any home is a shorthand description of the manner in which the square footage was estimated and should not be construed to indicate certainty. Copyright © 2012 Lennar Corporation. Lennar and the Lennar logo are registered service marks of Lennar Corporation and/or its subsidiaries. MN Bldr. Lic# BC001413 3/12



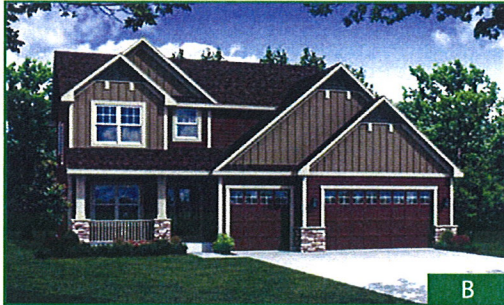
03/2013



# The Sinclair

2 Stories | 4 Bedrooms | 3 Baths | 3-Bay Garage

2,456 Sq. Ft. Total



**LENNAR**

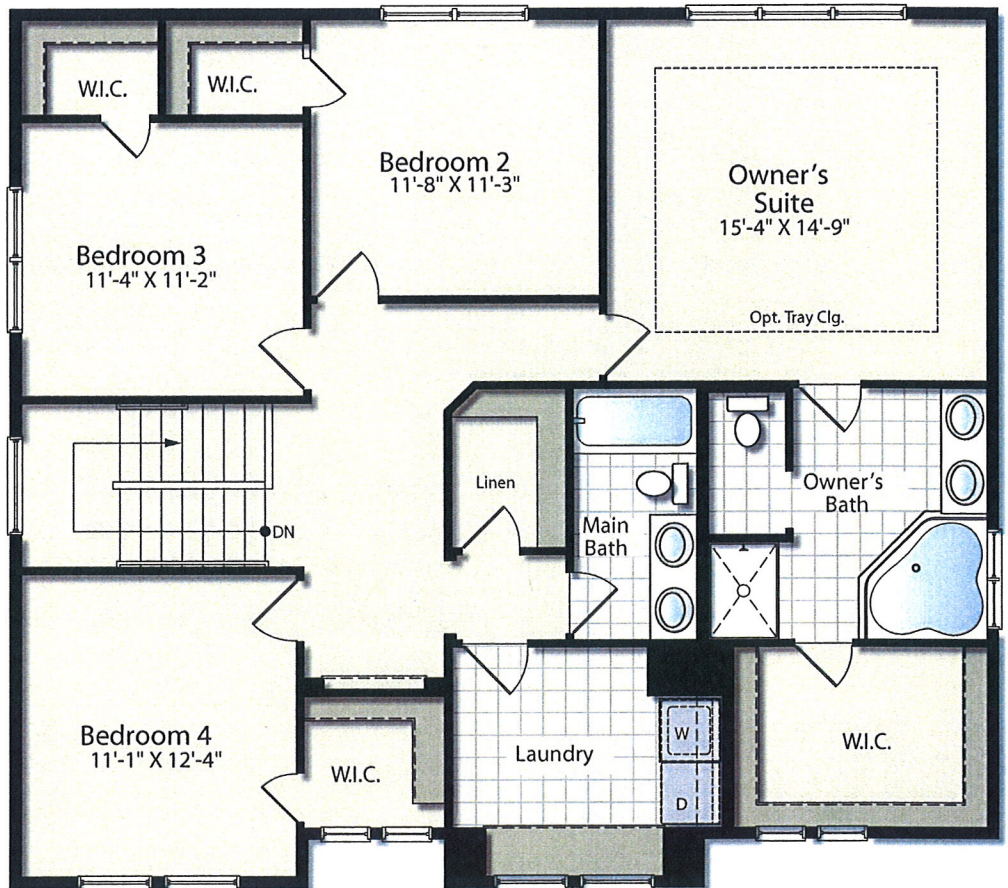
16305 36th Avenue N., Suite 600, Plymouth, MN 55446 • 952-249-3000



# The Sinclair

4 Bedrooms  
3 Baths

2,469 Sq. Ft. Total



EVERYTHING'S  
INCLUDED  
HOMES

[LENNAR.COM](http://LENNAR.COM)

Plans and elevations are artist's renderings and may contain options, which are not standard on all models. Lennar reserves the right to make changes to these floor plans, specifications, dimensions and elevations without prior notice. Stated dimensions and square footage are approximate and should not be used as representation of the home's precise or actual size. Any statement, verbal or written, regarding "under air" or "finished area" or any other description or modifier of the square footage size of any home is a shorthand description of the manner in which the square footage was estimated and should not be construed to indicate certainty. Copyright © 2012 Lennar Corporation. Lennar and the Lennar logo are registered service marks of Lennar Corporation and/or its subsidiaries. MN Bldr. Lic# BC0014133/12



03/2013



# The Snelling

2 Stories | 4 Bedrooms | 4 Baths | 3-Bay Garage

3,270 Sq. Ft. Total



**LENNAR**<sup>®</sup>

16305 36th Avenue N., Suite 600, Plymouth, MN 55446 • 952-249-3000







# The St. Croix II

2 Stories | 4 Bedrooms | 3 Baths | 3-Bay Garage

2,806 Sq. Ft. Total



**LENNAR**<sup>®</sup>

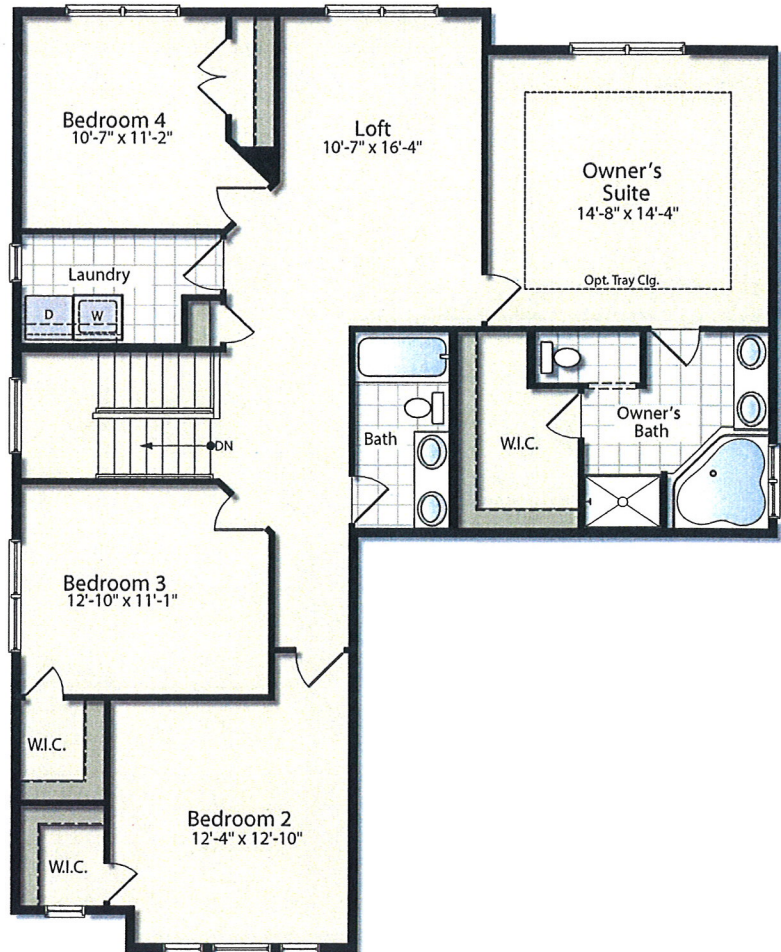
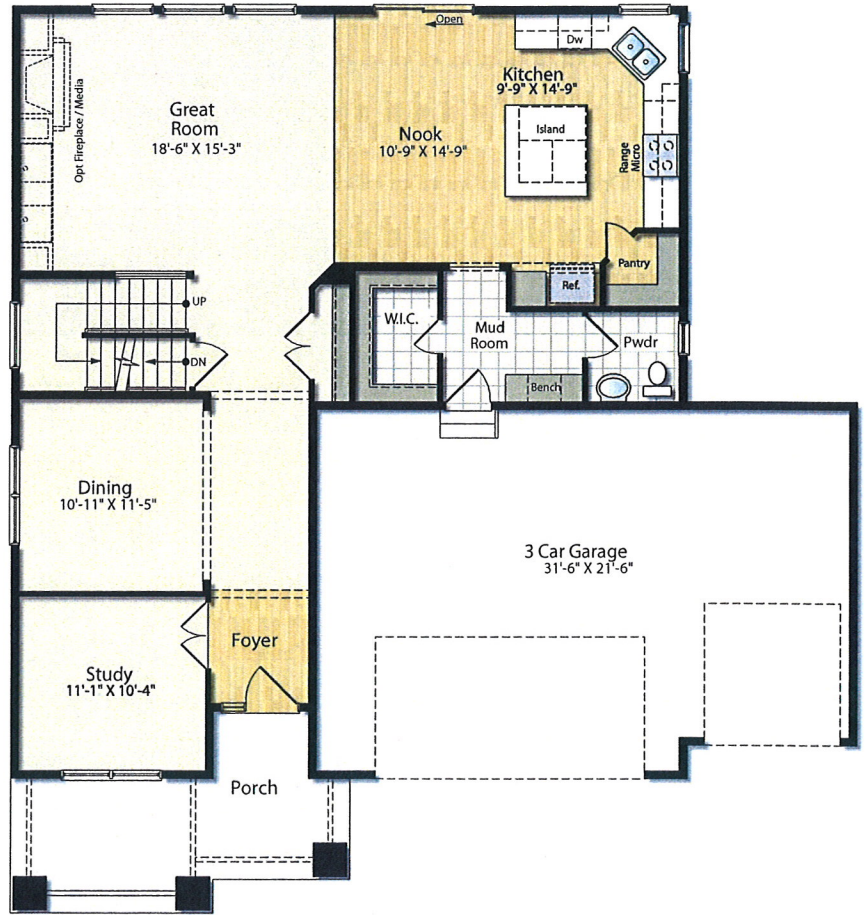
16305 36th Avenue N., Suite 600, Plymouth, MN 55446 • 952-249-3000



# The St. Croix II

4 Bedrooms  
3 Baths

2,806 Sq. Ft. Total



EVERYTHING'S  
INCLUDED  
HOMES

LENNAR.COM

Plans and elevations are artist's renderings and may contain options, which are not standard on all models. Lennar reserves the right to make changes to these floor plans, specifications, dimensions and elevations without prior notice. Stated dimensions and square footage are approximate and should not be used as representation of the home's precise or actual size. Any statement, verbal or written, regarding "under air" or "finished area" or any other description or modifier of the square footage size of any home is a shorthand description of the manner in which the square footage was estimated and should not be construed to indicate certainty. Copyright © 2012 Lennar Corporation. Lennar and the Lennar logo are registered service marks of Lennar Corporation and/or its subsidiaries. MN Bldr. Lic# BC001413 3/12 03/2013

