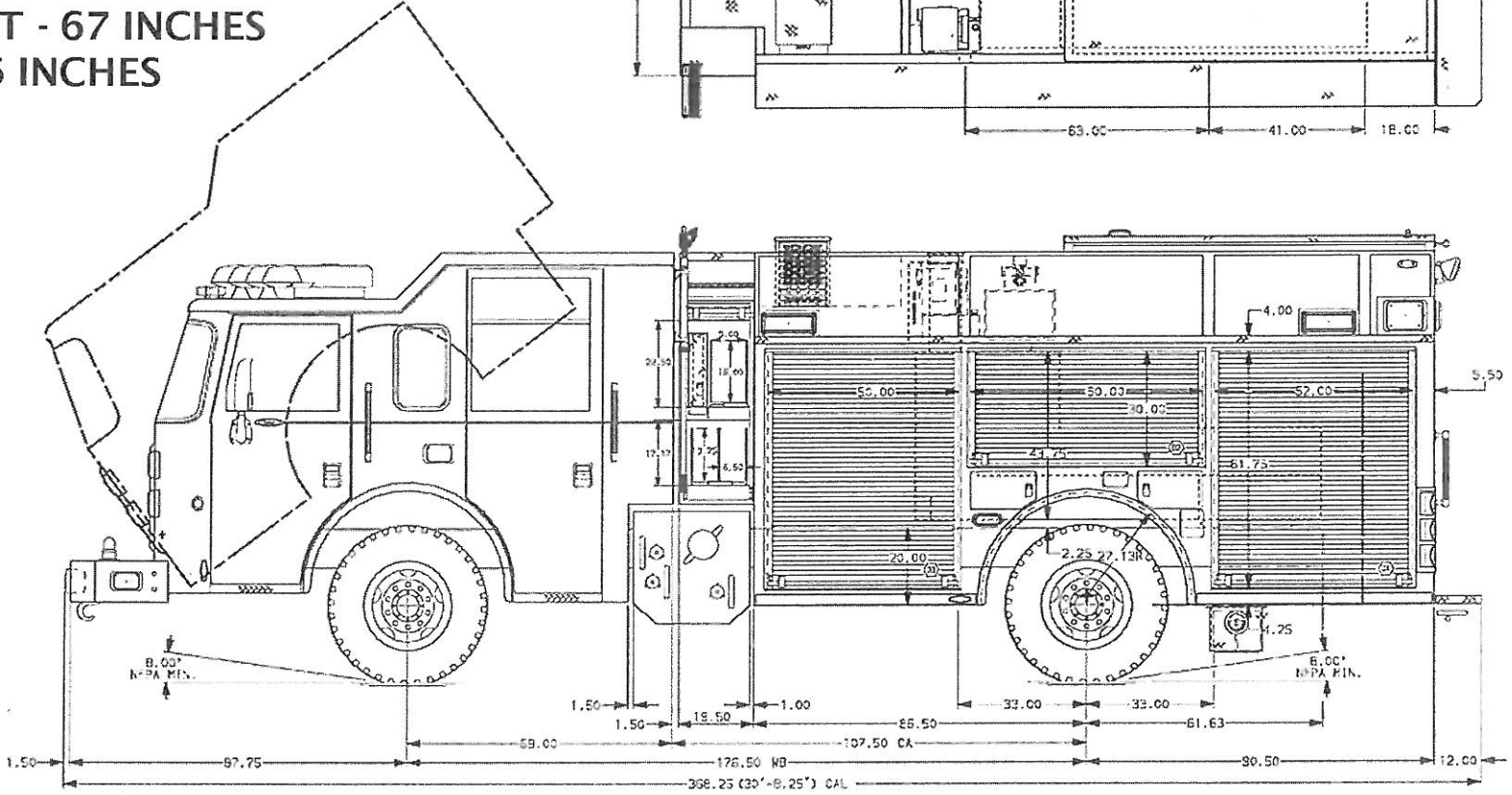
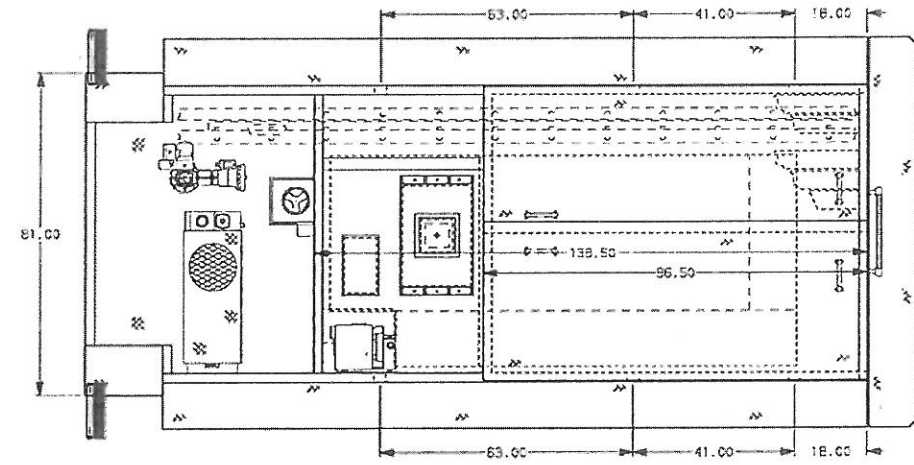
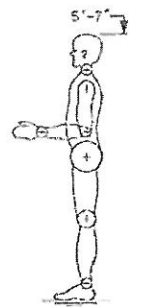
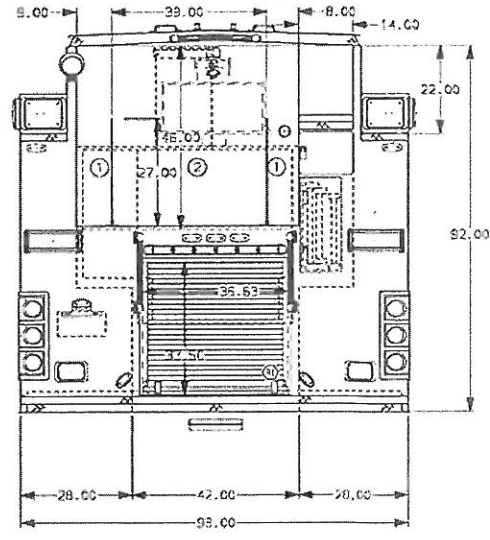


**PIERCE PUC
500 GALLON TANK
1500 GPM PUMP
PRICE - \$353,000**

**LENGTH - 368 INCHES
HEIGHT - 125 INCHES
HOSE BED HEIGHT - 67 INCHES
WHEELBASE - 176 INCHES**



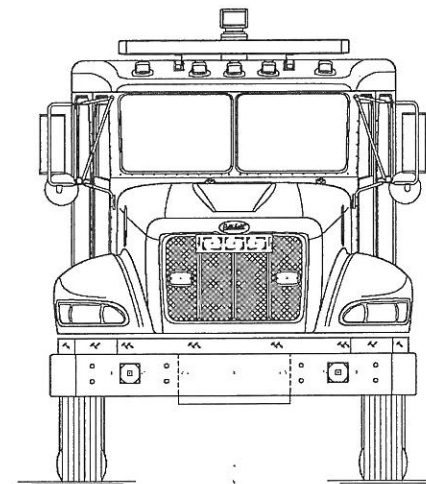
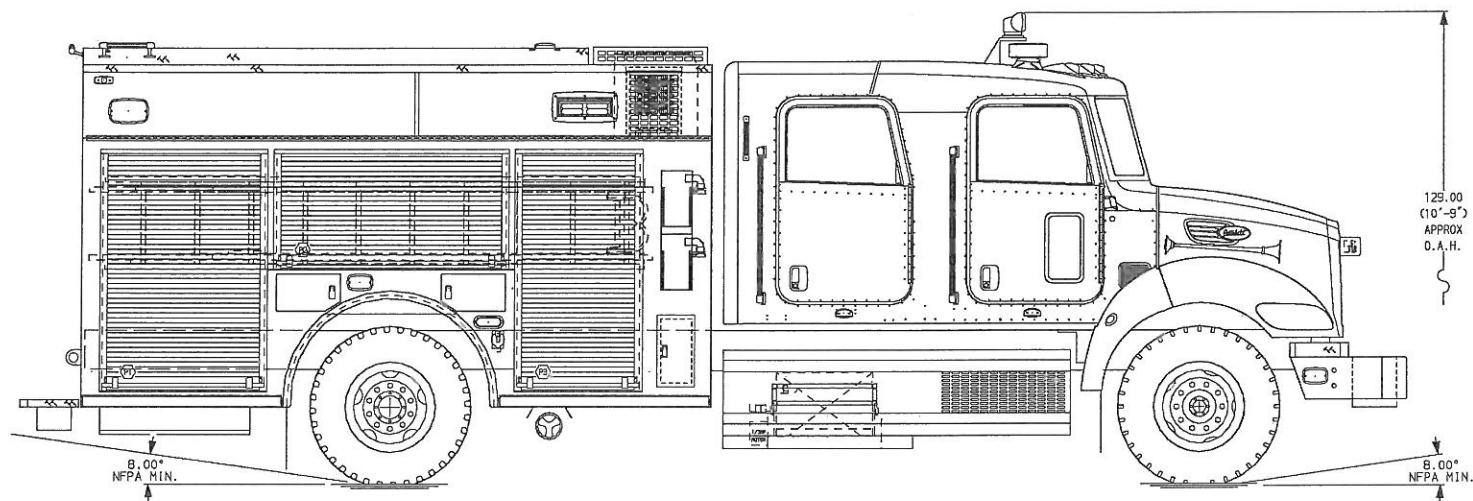
- HOSEBED CAPACITIES**
- ① 1500' of 2.50" O.D. POLYESTER HOSE
 - ② 200' of 1.50" O.D. POLYESTER HOSE



ALUMINUM BODY

NOTE
DIMENSIONS SHOWN ARE APPROXIMATE
AND ARE SUBJECT TO MINOR DEVIATIONS
AS MAY OCCUR OR BE NECESSARY IN
CONSTRUCTION.
MINOR DETAILS NOT SHOWN.

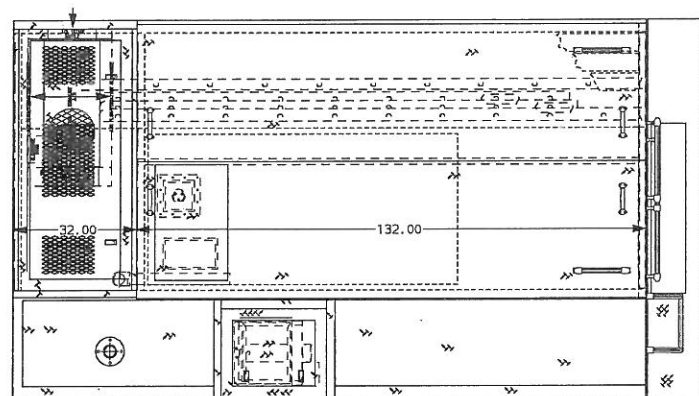
CUSTOMER APPROVAL				Pierce MANUFACTURING INC.		JOB NO.	PRELIM
APPROVED BY: _____						SCALE	DATE
DATE: _____						1:24	
REV	DATE	BY	CH	CHASSIS DATA	TITLE	DRAWN BY	
				PIERCE	FOR	BZ1	28SEP11
				SABER	DWG NO.	03-7804	
						1 of 1	



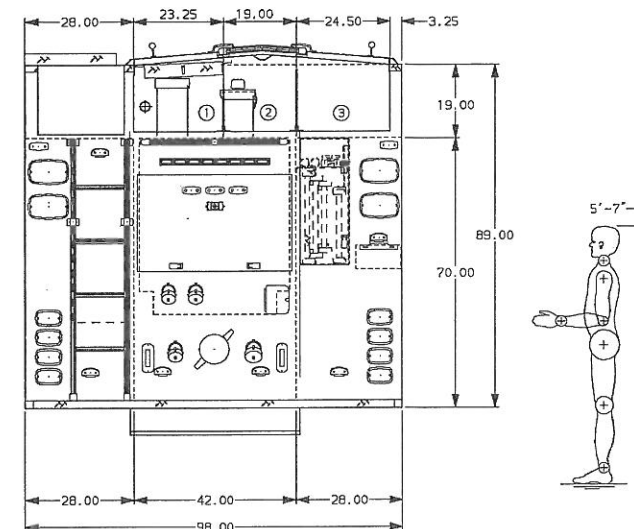
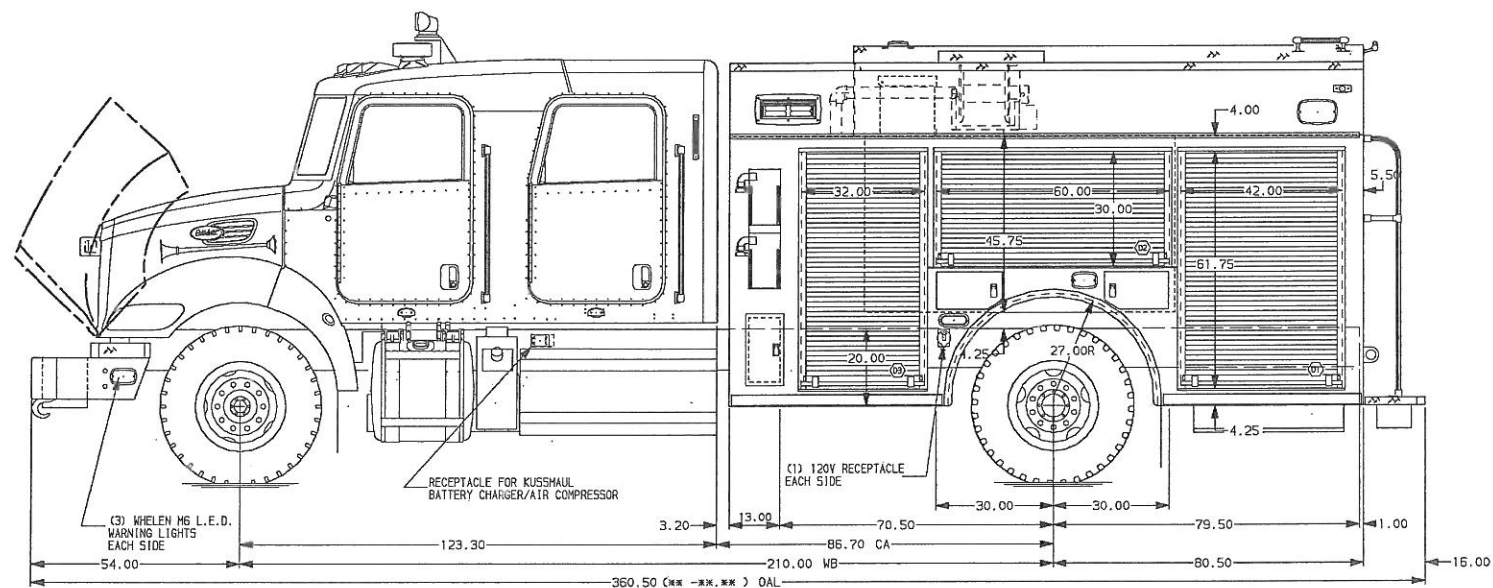
PETERBILT CHASSIS - PIERCE

500 GALLON TANK
1250 GPM PUMP
PRICE \$381,641

LENGTH - 362 INCHES
HEIGHT - 127 INCHES
HOSE BED HEIGHT - 92 INCHES
WHEELBASE - 210 INCHES



HOSEBED CAPACITIES
① - 550' OF 2.50" HOSE
② - 300' OF 2.50" HOSE
③ - 550' OF 5.00" HOSE



STAINLESS STEEL BODY

MAXIMUM O.A.L. 336.00"

NOTE
DIMENSIONS SHOWN ARE APPROXIMATE AND ARE SUBJECT TO MINOR DEVIATIONS AS MAY OCCUR OR BE NECESSARY IN CONSTRUCTION.
MINOR DETAILS NOT SHOWN.

- BATTERY CHARGER LOCATED IN COMPARTMENT D3
- BATTERY CHARGE INDICATOR LOCATED ON D.S. SEAT RISER
- ONE PAINTED ADJUSTABLE TILTING SLIDE-OUT TRAY IN COMPARTMENT P2
- ONE ADJUSTABLE SHELF IN COMPARTMENTS D2, TWO IN D3 AND P1
- AMOR L.E.D. DUAL LIGHT STRIPS IN COMPARTMENTS D1, D2, D3, P1, P2, AND P3
- L.E.D. PERIMETER SCENE LIGHTS LOCATED PER SHOP ORDER
- CIRCUIT BREAKER PANEL IN COMPARTMENT D3
- ONE AKRON ELECTRIC REWIND CORD REEL LOCATED IN HATCH COMPARTMENT ABOVE D2 EACH WITH 100' OF 10/3 CORD
- (1) 120V 6-PLACE RECEPTACLE LOCATED IN THE CAB
- FOAM PRO 2001 FOAM SYSTEM
- TWO SLIDE-OUT TOOLBOARDS LOCATED IN COMPARTMENT P3
- ONE FLOOR MOUNTED SLIDE-OUT TRAY LOCATED IN COMPARTMENTS D1, D3, AND P1

CUSTOMER APPROVAL			
APPROVED BY:			
DATE:			
REV	DATE	BY	CH
-	-	-	-
348			



TITLE 1500-D-500 480 GAL WATER W/20 GAL FOAM, 151" REAR MOUNT PUMPER, LADDERS THRU PS BODY, FOAM PRO
FOR EAGAN FIRE DEPARTMENT
EAGAN, MN
DWG NO. EAGAN_2

JOB NO.	CONCEPT
SCALE 1:24	DATE
DRAWN BY BZI	21APR11
CHECKED BY -	-
SHEET SIZE D	SHEET NO. 1 OF 1



SPRING LAKE PARK BLAINE MOUNDS VIEW SPRING LAKE PARK, MN.

QUOTE 45980

CUSTOM REAR MOUNT RESCUE PUMPER
E-ONE TYPHOON X MED. 4X2 CHASSIS

E-1 CUSTOM CHASSIS PUMPER
500 GALLON TANK
1250 GPM PUMP
PRICE - \$355,000

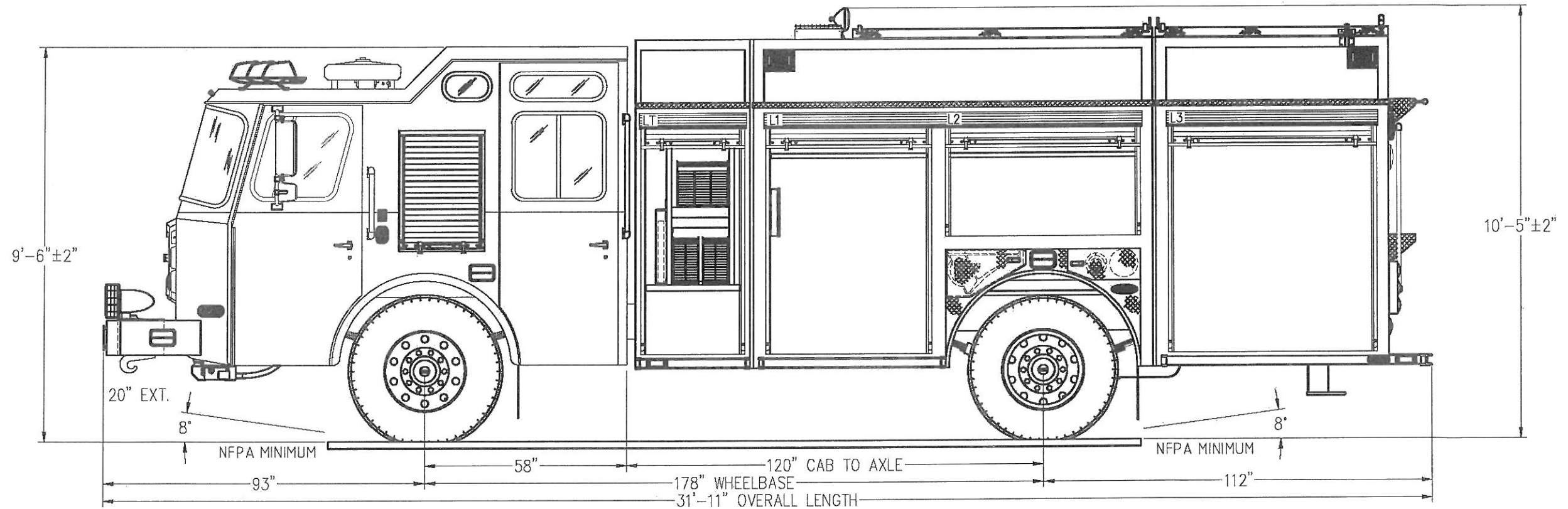
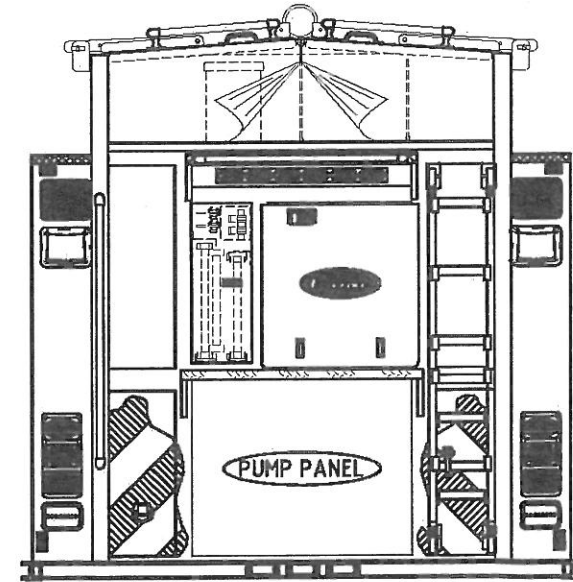
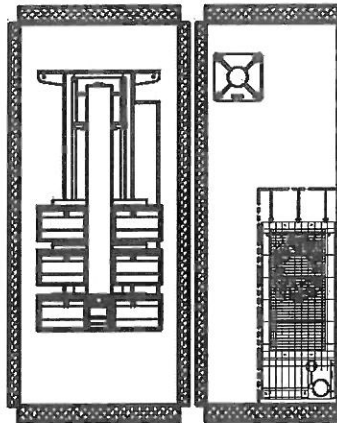
LENGTH - 383 INCHES
HEIGHT - 125 INCHES
HOSE BED HEIGHT - 90 INCHES
WHEELBASE - 178 INCHES

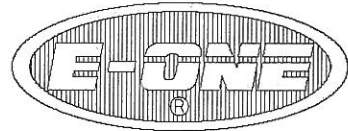
1250 GPM WATEROUS S100D/TC10 PUMP 500 GALLON WATER 30 GALLON CLASS "A" FOAM CELL	HOSE LOAD:	
	600' OF 5.00" LDH	
	600' OF 2.50" DJ	

COMPT.	OPENING	INTERIOR DIMENSION
LT/RT	28W 59H	30W 38H 70D UPPER 30W 21H 28D LOWER
L1/R1	46W 59H	48W 31H 12D UPPER 48W 59H 28D LOWER
L2/R2	54W 25H	56W 31H 12D UPPER 56W 22H 28D LOWER
L3	58W 59H	60W 31H 12D UPPER 60W 59H 24D LOWER
R3	58W 59H	PUMP PANEL UPPER 60W 24H 24D LOWER

THIS DRAWING IS FOR REFERENCE PURPOSES. ALL DIMENSIONS ARE SUBJECT TO MINOR VARIATIONS DUE TO MANUFACTURING PROCESSES.

This print is the property of E-One, Inc. and is loaned to you subject to return on demand, unless otherwise agreed to in writing by E-One, Inc. Its contents are confidential and must not be copied or submitted to third parties for use or examination.





SPRING LAKE PARK BLAINE MOUNDS VIEW SPRING LAKE PARK, MN.

CONCEPT DRAWING
CUSTOM REAR MOUNT RESCUE PUMPER
FREIGHTLINER M2 112 4DR CAB 4X2 CHASSIS

E-1 COMMERCIAL FREIGHTLINER CHASSIS
500 GALLON TANK
1250 GPM PUMP
PRICE - \$345,000

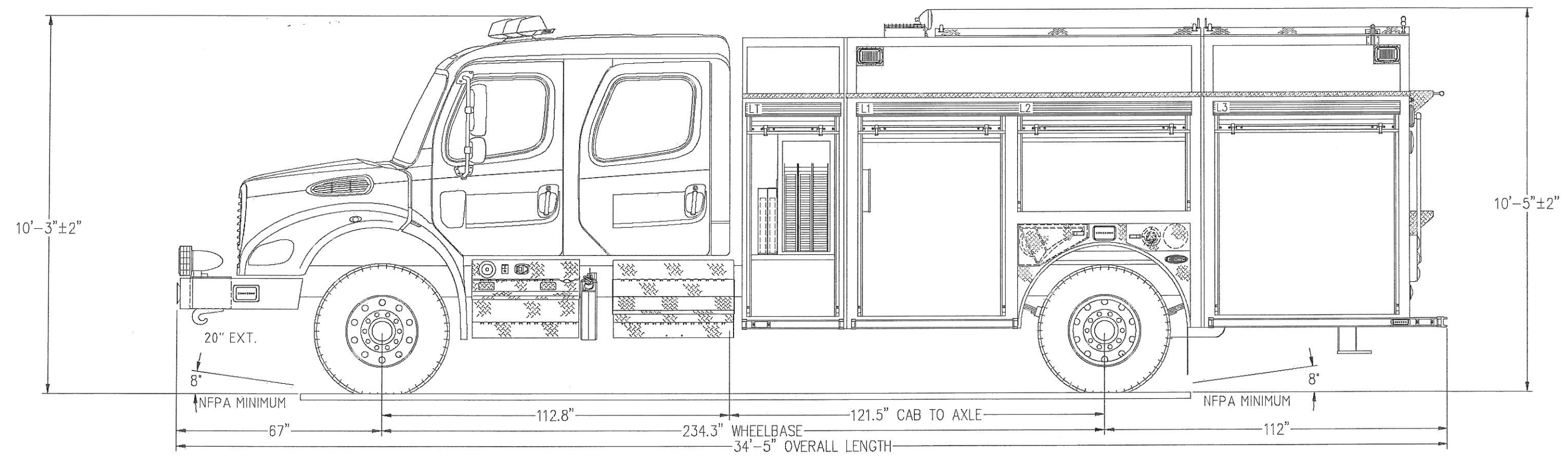
LENGTH - 408 INCHES
HEIGHT - 125 INCHES
HOSE BED HEIGHT - 90 INCHES
WHEELBASE - 234 INCHES

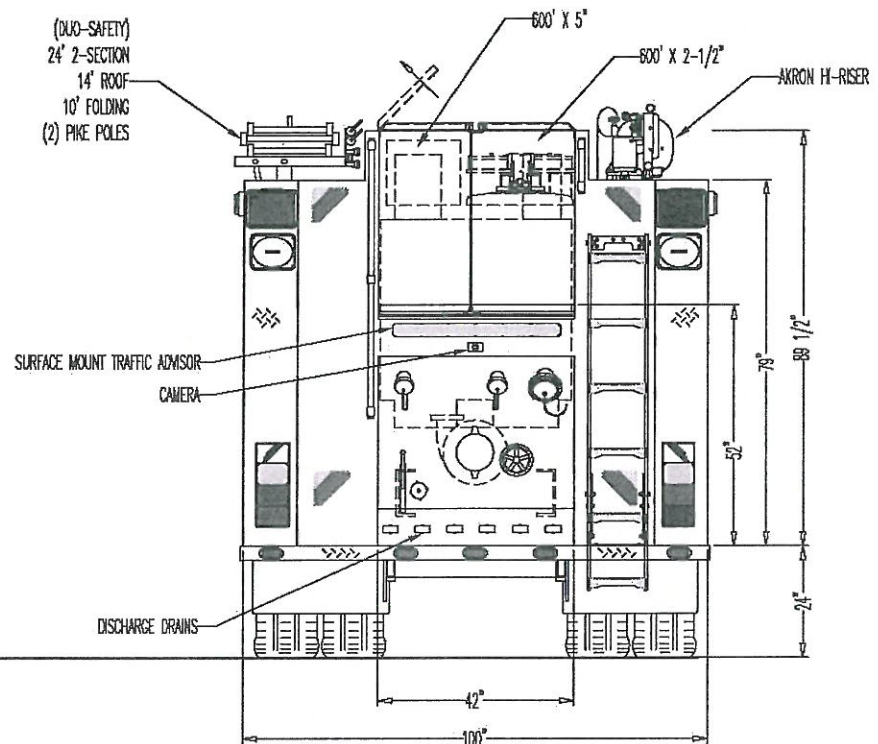
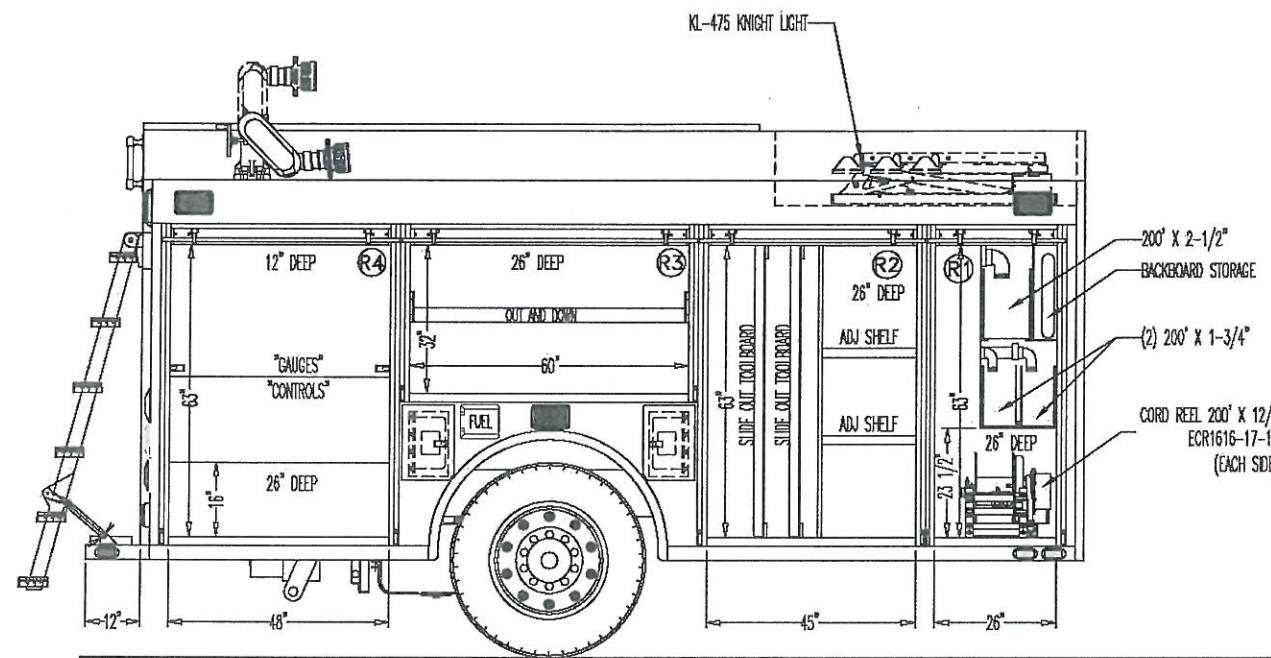
1250 GPM WATEROUS S100D/TC10 PUM		HOSE LOAD:	
500 GALLON WATER		600' OF 5.00" LDH	
30 GALLON CLASS "A" FOAM CELL		600' OF 2.50" DJ	
COMPT.	OPENING	INTERIOR DIMENSION	
LT/RT	28W 59H	30W 38H 70D	UPPER
		30W 21H 26D	LOWER
L1/R1	46W 59H	48W 3H 12D	UPPER
		48W 56H 26D	LOWER
L2/R2	54W 25H	56W 3H 12D	UPPER
		56W 22H 26D	LOWER
L3	58W 59H	60W 3H 12D	UPPER
		60W 56H 24D	LOWER
R3	58W 59H	PUMP PANEL UPPER	
		60W 24H 24D	LOWER

THIS DRAWING IS FOR REFERENCE PURPOSES. ALL DIMENSIONS ARE SUBJECT TO MINOR VARIATIONS DUE TO MANUFACTURING PROCESSES.

This print is the property of E-One, Inc. and is loaned to you subject to return on demand, unless otherwise agreed to in writing by E-One, Inc. Its contents are confidential and must not be copied or submitted to third parties for use or examination.

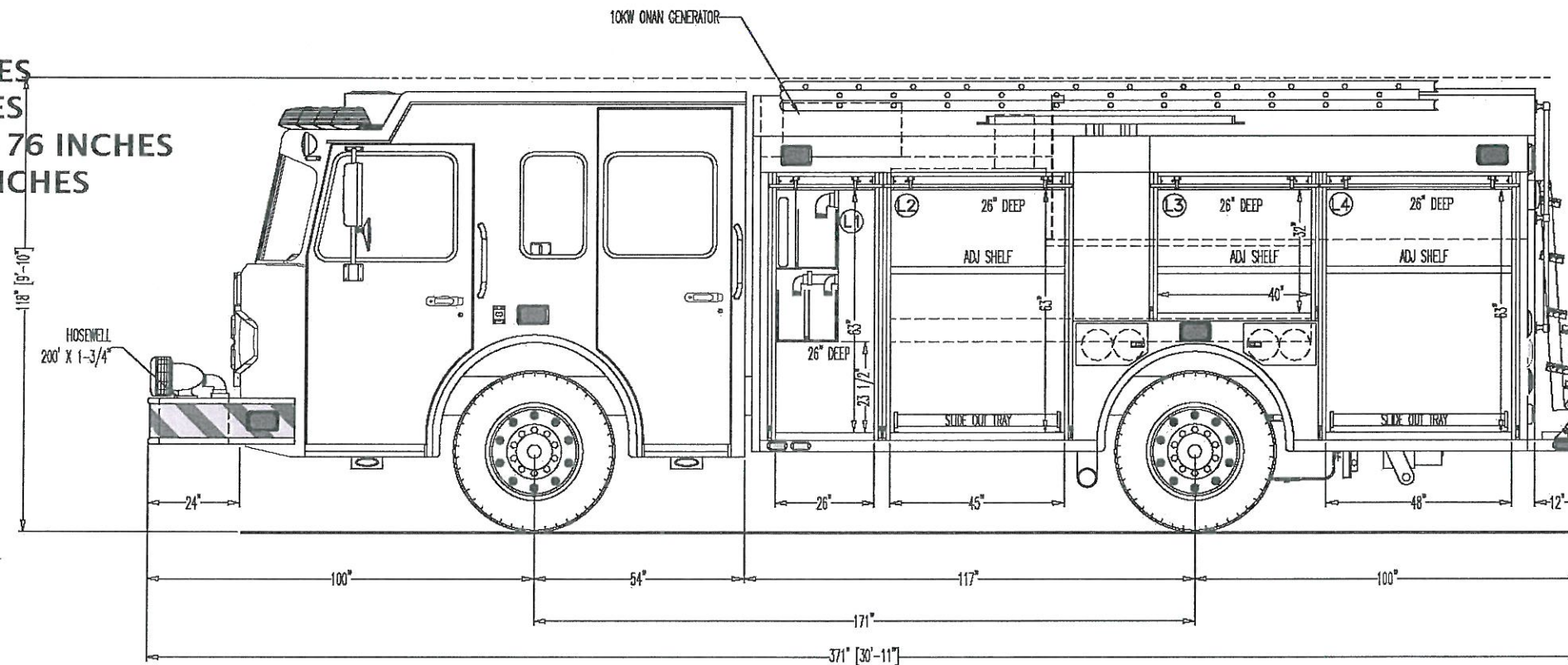
CONCEPT DRAWING
FOR DISCUSSION PURPOSES ONLY





ROSENBAUER CUSTOM CHASSIS
500 GALLON TANK
1250 GPM PUMP
PRICE - \$362,000

LENGTH - 371 INCHES
HEIGHT - 118 INCHES
HOSE BED HEIGHT - 76 INCHES
WHEELBASE - 171 INCHES



DO NOT SCALE DRAWING.
 ALL DIMENSIONS ARE
 APPROXIMATE AND
 SUBJECT TO ENGINEERING
 CHANGES DUE TO CHASSIS
 VARIATIONS. BLUEPRINT
 DOES NOT NECESSARILY
 SHOW ALL ITEMS IN THE
 SPECIFICATIONS.

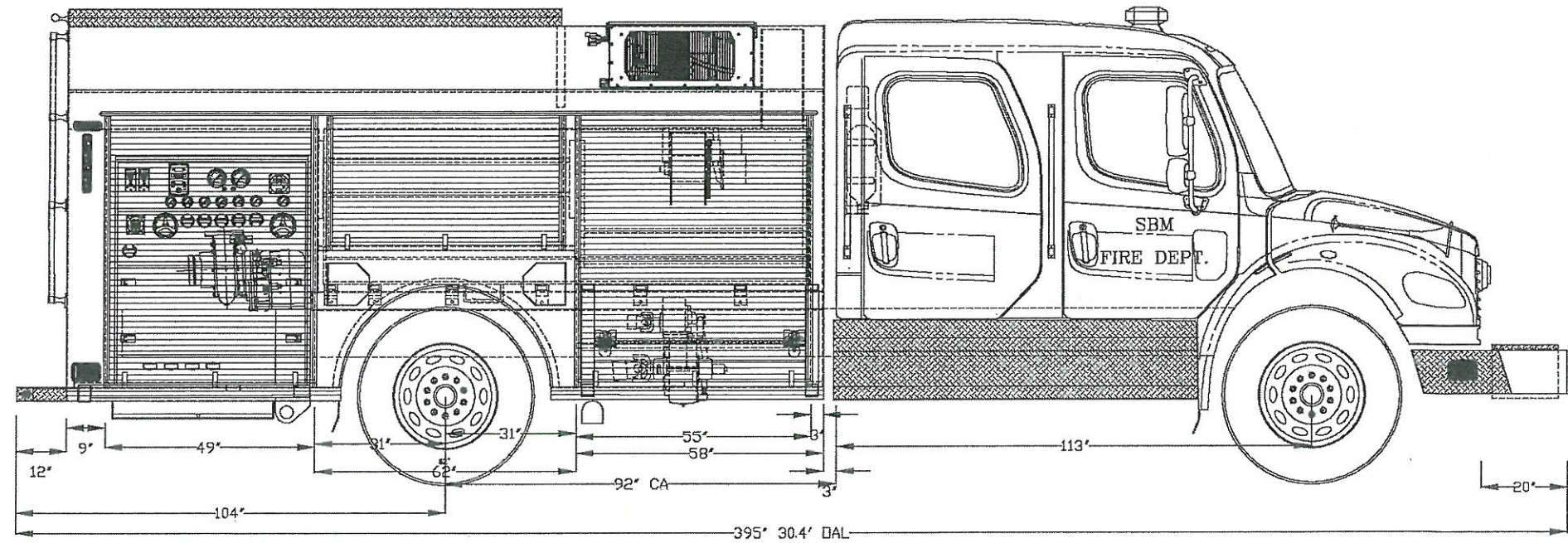
- PROPOSED -
SBM FIRE

NOTES:
 OVERALL HEIGHT IS
 IN LOADED CONDITION

MINNESOTA DIV.		DWG# P4411-05
REV 5: 7-14-11 JPF	DRAWN: 6-22-2011	CHASSIS: SPARTAN MFD 10"IR FORCE
	DRAWN BY: JPF	BODY MAT'L: ALUMINUM
	VEHICLE TYPE: PUMPER	SUBFRAME MAT'L: ALUMINUM
	FILE #: NA	TANK MAT'L/GALS: POLY/500/20(FOM)
	SCALE: DNS	WEIGHT FRONT:
	PUMP: WATERLOUS CX 1250 GPM	WEIGHT REAR:

**CUSTOM FIRE APPARATUS
FREIGHTLINER CHASSIS
500 GALLON TANK
1250 GPM PUMP
PRICE - \$313,000**

**LENGTH - 364 INCHES
HEIGHT - 124 INCHES
HOSE BED HEIGHT - 86 INCHES
WHEELBASE - 205 INCHES**



DRAWING FOR THE:
SBM FIRE DEPARTMENT

SCALE: 1" = 20" DATE: 7-15-11 DRAWN BY: JESSIE COREY

CHASSIS: INFO	WATER TANK:	FIRE PUMP MFG: WATERLOUS
CHASSIS: FREIGHTLINER	WATER CAP: 500 GALLONS	MODEL: CXVK
ENGINE:	CLASS A CAP: 20 GALLONS	CAPACITY GPM: 1250
WHEELBASE: 205"	CLASS B CAP: GALLONS	SUCTIONS:
CAB-TO-AXLE: 92"	HOSE	CAPACITY
	1"	2 1/2'
	1 3/4"	5'
	2"	6'
	2 1/2"	1'
	3"	2'
	4"	2 1/2'
	5"	3' & UP
		1R
		DISCHARGES:
		1 BUMP
		4 R
		1DG 1R

NOTES: Detailed specifications for this apparatus supersede this presentation drawing. Items shown on this drawing but not detailed within the specifications maybe optional add-on features.

